

WARNER ROBINS, GEORGIA

# TACAN Y RWY 15

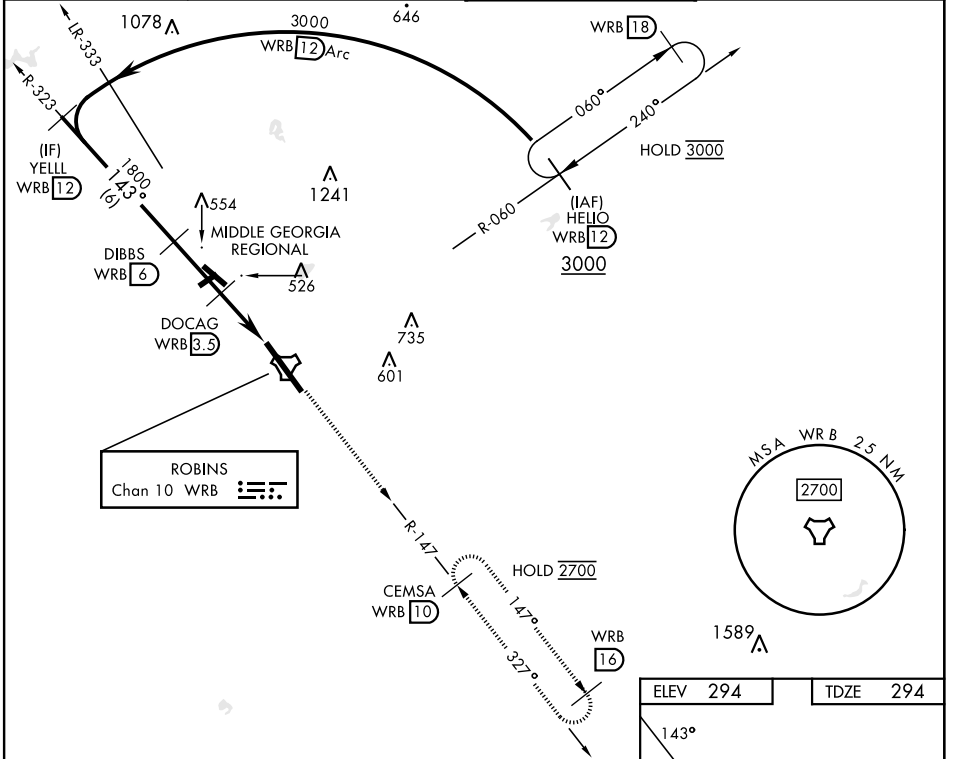
TACAN WRB Chan <b>10</b>	APCH CRS <b>143°</b>	Rwy ldg <b>12,001</b> TDZE <b>294</b> Arprt Elev <b>294</b>
-----------------------------	-------------------------	---

AL-442 [USAF]

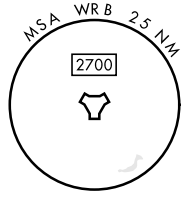
ROBINS AFB (KWRB)

ALSIF-1  
**MISSED APPROACH:** Climb To 2700 on WRB TACAN R-147 to CEMSA and hold.  
 \*When ALS inop, increase CAT AB RVR to 55, vis to 1 mile; CAT CDE vis to 1 1/2 miles.  
 \*\*Circling not authorized SW of Rwy 15-33.

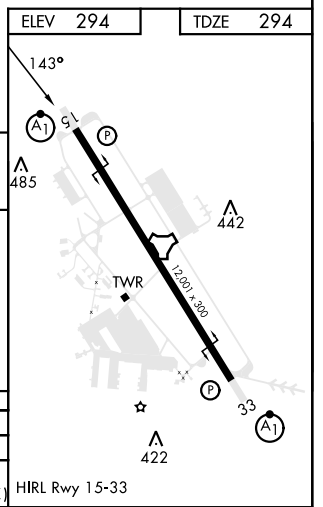
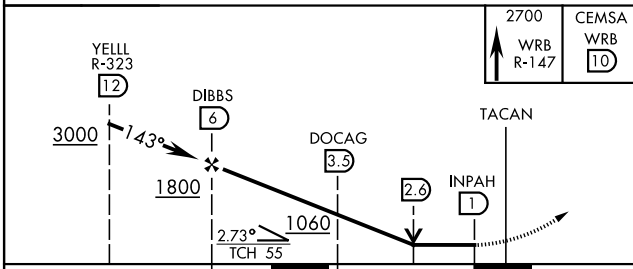
ATIS <b>119.475 273.475</b>	ATLANTA APP CON <b>124.2 279.6</b>	TOWER <b>133.225 257.975</b>	GND CON <b>121.85 275.8</b>
--------------------------------	---------------------------------------	---------------------------------	--------------------------------



**ROBINS**  
 Chan 10 WRB



EMERG SAFE ALT 100 NM 3700



CATEGORY	A	B	C	D	E
S-15*	820/24	526 (600-1/2)	820/55	526 (600-1)	
CIRCLING**	820-1	526 (600-1)	880-1 1/2 586 (600-1 1/2)	960-2 666 (700-2)	1040-2 3/4 746 (800-2 3/4)

HIRL Rwy 15-33

WARNER ROBINS, GEORGIA

32° 38' N 83° 36' W

ROBINS AFB (KWRB)

Orig 20MAY21

# TACAN Y RWY 15

SE-4, 22 FEB 2024 to 21 MAR 2024

SE-4, 22 FEB 2024 to 21 MAR 2024