

# RNAV (GPS) RWY 23

AL-3214 (USA)

CAMP PEARY LNDG STRIP (KW94)

ARCH CRS	Rwy Idg	<b>5018</b>
<b>230°</b>	TDZE	<b>34</b>
	Appt Elev	<b>41</b>

RNP APCH - GPS

▼ Restricted airfield, PPR. Contact Camp Peary Ops prior to landing.  
 Williamsburg Jamestown (JWG) Primary dflimeter setting.

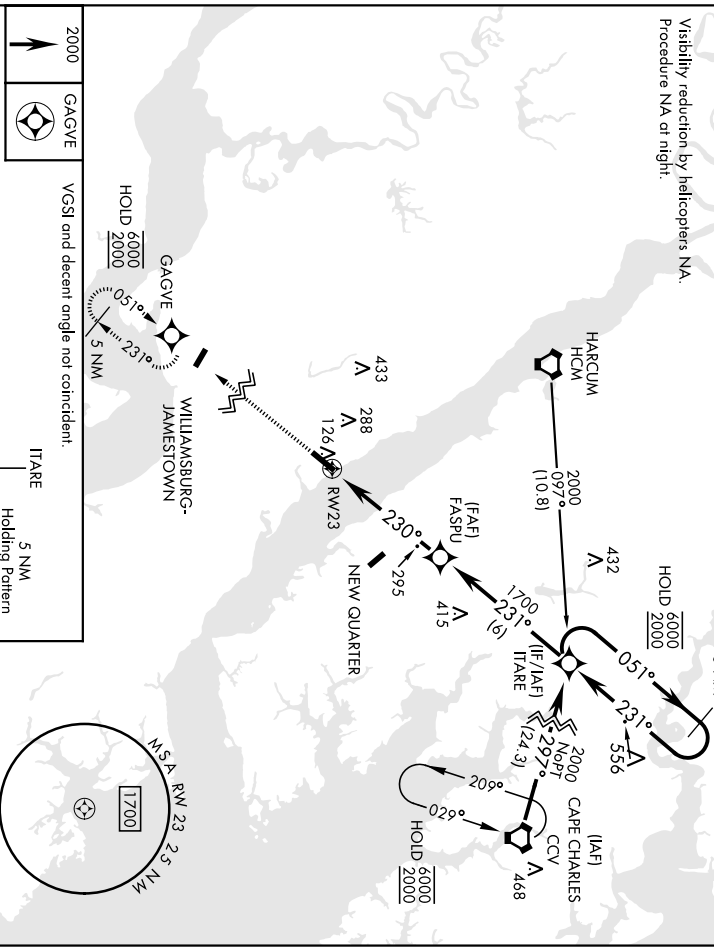
MISSED APPROACH: Climb to 2000 direct GAGVE and hold.

WILLIAMSBURG-JAMESTOWN AWOS-3  
**120.625**

NORFOLK APP CON  
**125.7 335.625**

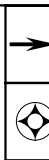
When primary dflimeter setting (KJGG) not received, use Newport News Williamsburg Intl (KPHF) dflimeter setting.

Visibility reduction by helicopters NA.  
 Procedure NA at night.



2000  
 GAGVE

VGSI and decant angle not coincident.

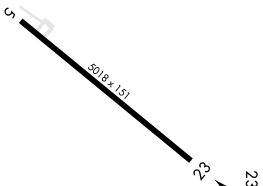


FASPU  
 ITARE  
 5 NM  
 Holding Pattern

ELEV 41

TDZE 34

CATEGORY	A		B		C		D		
	LNNAV MDA	560-1	576	(600-1)	560-1½	526	(600-1½)		
CIRCLING	560-1	519	(600-1)	579	(600-1)	620-1½	719	(800-2¼)	
	NEWPORT NEWS / WILLIAMSBURG INTL ALTIMETER SETTINGS MINIMUMS								
LNNAV MDA	580-1	546	(600-1)	580-1½	546	(600-1¾)			
CIRCLING	580-1	539	(600-1)	620-1	780-2¼	579	(600-1¾)	739	(800-2¼)



WILLIAMSBURG, VIRGINIA  
 Arrdt 1 02NOV23

37°18'N-76°38'W

# CAMP PEARY LNDG STRIP (KW94) RNAV (GPS) RWY 23

WILLIAMSBURG, VIRGINIA

**RNAV (GPS) RWY 5**

AI-3214 [USA]

CAMP PEARY LNDG STRIP (KW94)

ARCH CRS  
050°  
RWY Idg 5018  
TDZE 41  
Apxl Elev 41

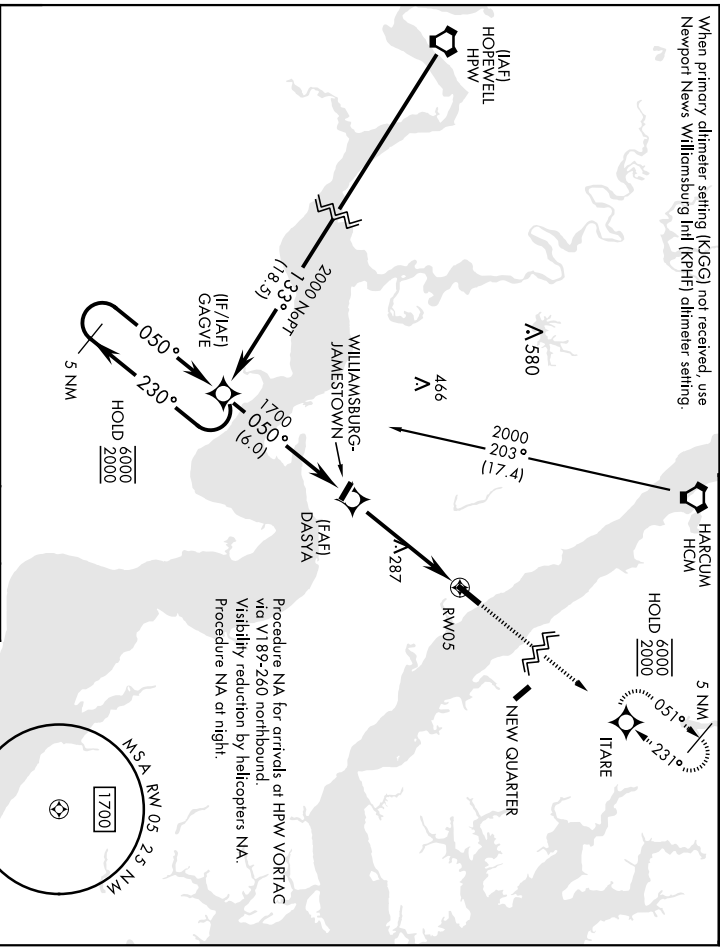
RNP APCH - GPS  
▼ Restricted airfield, PPR. Contact Camp Peary Ops prior to landing.  
Williamsburg Jamestown (KJCG) primary dihimeter setting.

MISSED APPROACH: Climb to 2000 direct ITARE and hold.

WILLIAMSBURG-JAMESTOWN AWOS-3  
120.625

NORFOLK APP CON  
125.7 335.625

When primary dihimeter setting (KJCG) not received, use Newport News Williamsburg Intl (KPHF) dihimeter setting.



Procedure NA for arrivals at HPW VORTAC via V189-260 northbound. Visibility reduction by helicopters NA. Procedure NA at night.

CATEGORY	A	B	C	D
LNNAV MDA	600-1	559 (600-1)	600-1½ 559 (600-1½)	600-1½ 559 (600-1½)
☑ CIRCLING	600-1	620-1	620-1½ 579 (600-1½)	760-2¼ 719 (800-2¼)
NEWPORT NEWS / WILLIAMSBURG INTL ALTIMETER SETTING				
LNNAV MDA	640-1	599 (600-1)	640-1¾ 599 (600-1¾)	780-2¼ 739 (800-2¼)
☑ CIRCLING	640-1	599 (600-1)	640-1¾ 599 (600-1¾)	780-2¼ 739 (800-2¼)

5 NM Holding Pattern	2000	ITARE
ELEV 41	TDZE 41	

WILLIAMSBURG, VIRGINIA

37°18'N-76°38'W

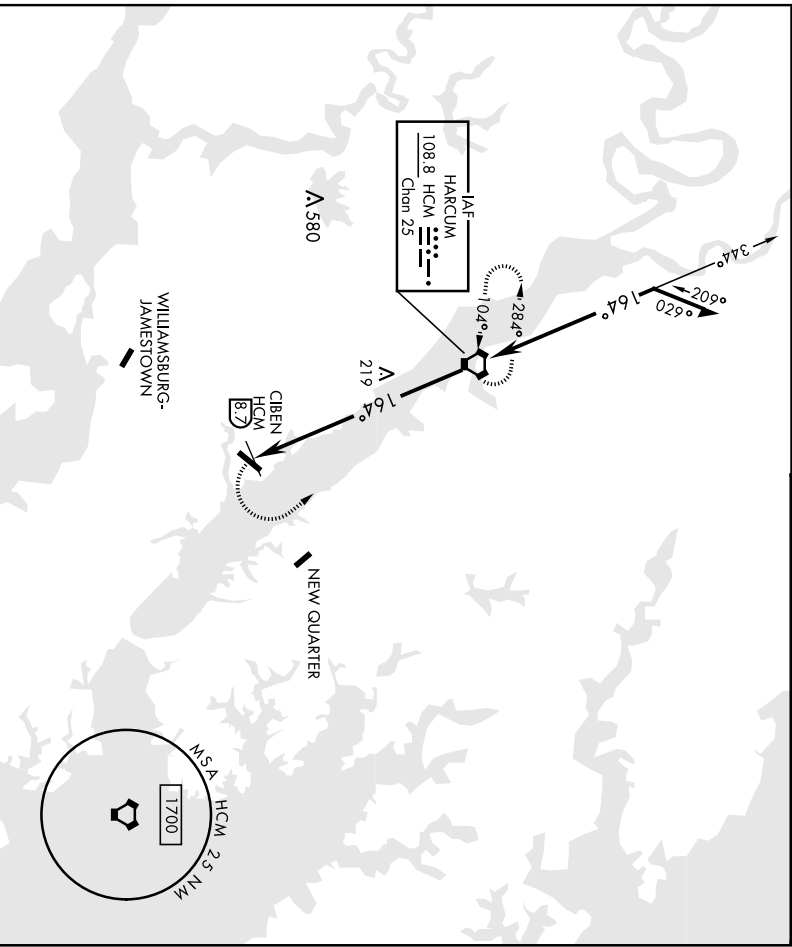
CAMP PEARY LNDG STRIP (KW94)

Arrch 1 02NOV23

**RNAV (GPS) RWY 5**

**VOR-A**

VORTAC HCM <b>108.8</b> Chn 25	APCH CRS <b>164°</b>	Rwy Idg N/A	5018 Appt Elev 41	AL-3214 [USA]	CAMP PEARY LNDG STRIP (KW94)
<p><b>▼ * Circling to Rwy 23 NA at night:</b> Restricted airfield. PPR. Contact Camp Peary Ops prior to landing.</p>				<p>MISSED APPROACH: Climbing left turn to 2000 direct HCM VORTAC and hold.</p>	
WILLIAMSBURG-JAMESTOWN AWOS-3				NORFOLK APP CON	
<b>120.625</b>				<b>125.7 335.625</b>	



2000 HCM	VORTAC				ELEV 41
2000	Remain within 10 NM of HCM VORTAC				164° from VORTAC
<p>344°</p> <p>2000</p> <p>164°</p>		<p>8.7 NM</p>		<p>8018.151</p> <p>5</p>	
CATEGORY	A	B	C	D	
CIRCLING *	620-1 579 (600-1)	620-1½ 579 (600-1½)	620-2 579 (600-2)		
NEWPORT NEWS / WILLIAMSBURG INTL ALTIMETER SETTING					
CIRCLING *	640-1 599 (600-1)	640-1½ 599 (600-1½)	640-2 599 (600-2)		
WILLIAMSBURG, VIRGINIA 37°18'N-76°38'W					
CAMP PEARY LNDG STRIP (KW94)					
FAF to MAP 8.7 NM					
LRL Rwy 5-23					
REIL Rwy 5-23					
Knots 60 90 120 150 180					
Mins:Sec 8:42 5:48 4:21 3:29 2:54					