

WAAS CH 56639 W11A	APP CRS 114°	Rwy ldg 2713 TDZE 15 Apt Elev 15
--	------------------------	---

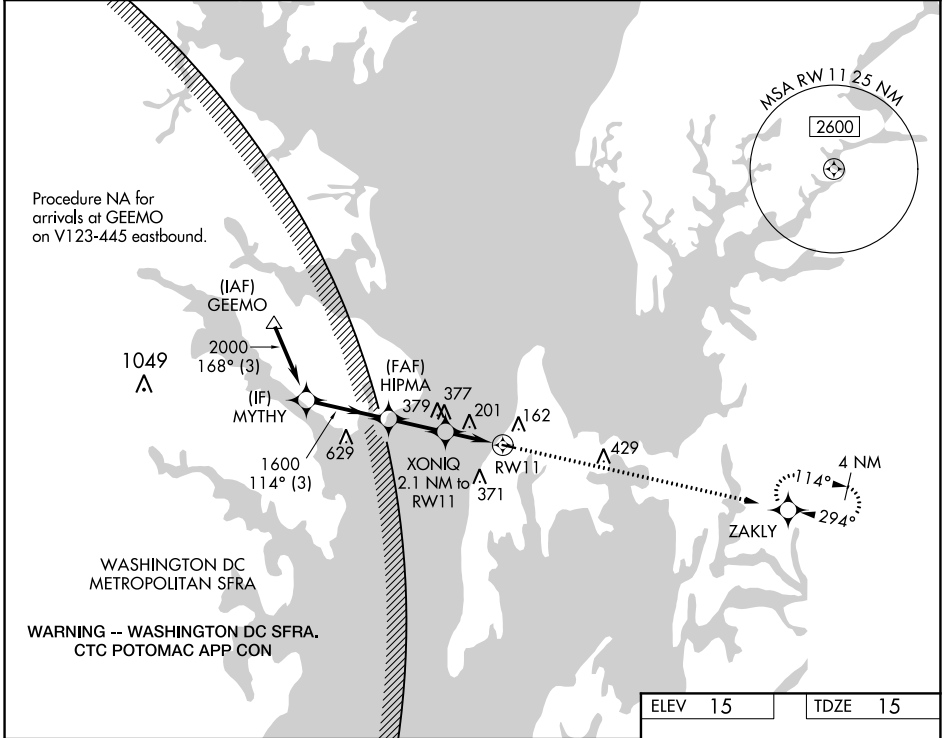
RNAV (GPS) RWY 11

BAY BRIDGE (W29)

RNP APCH. MISSED APPROACH: Climb to 2100 direct ZAKLY and hold.

For uncompensated Baro-VNAV systems, LNAV/VNAV NA below -15°C or above 54°C.

AWOS-3 120.575	POTOMAC APP CON 119.0 282.275	UNICOM 122.725 (CTAF) 0
--------------------------	---	-----------------------------------



NE-3, 22 FEB 2024 to 21 MAR 2024

NE-3, 22 FEB 2024 to 21 MAR 2024

ELEV 15		TDZE 15	
<p>VGSI and RNAV glidepath not coincident (VGSI Angle 3.00/TCH 39).</p> <p>2100 ZAKLY</p> <p>*LNAV only.</p>			
CATEGORY	A	B	C D
LPV DA	265-1	250 (300-1)	NA
LNAV/VNAV DA	489-1 $\frac{3}{8}$	474 (500-1 $\frac{3}{8}$)	NA
LNAV MDA	460-1	445 (500-1)	NA
CIRCLING	500-1 485 (500-1)	800-1 785 (800-1)	NA

REIL Rwy 11 and 29 0
MIRL Rwy 11-29 0

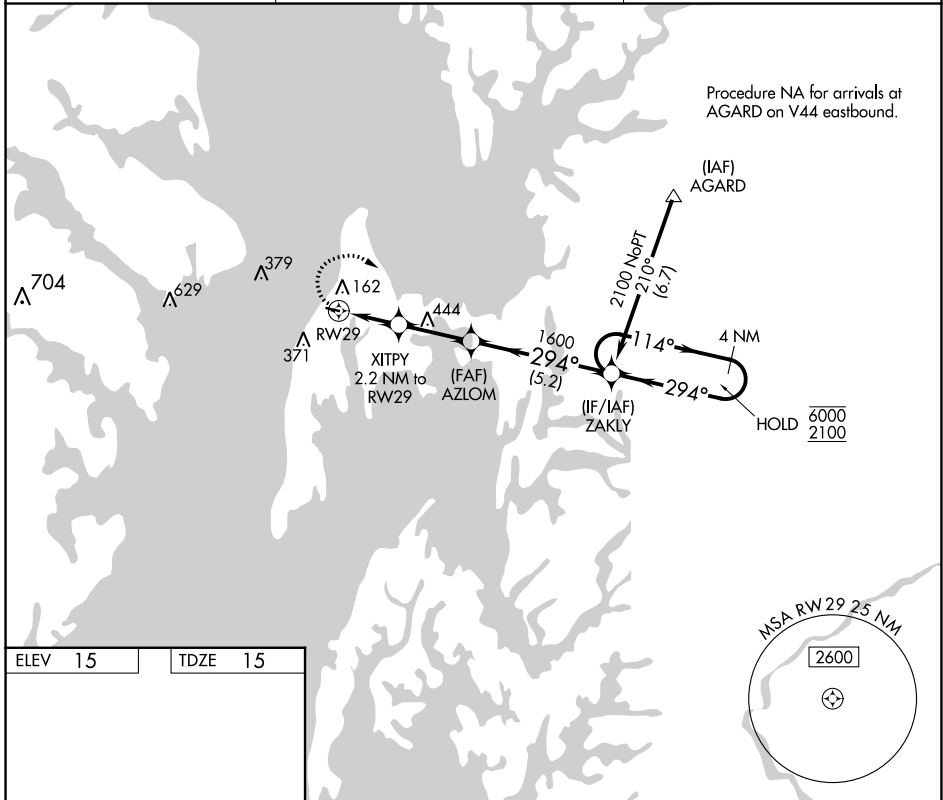
APP CRS	Rwy ldg	2713
294°	TDZE	15
	Apt Elev	15

RNAV (GPS) RWY 29

BAY BRIDGE (W29)

RNP APCH.	MISSED APPROACH: Climbing right turn to 2100 direct ZAKLY and hold.
<p>⚠ Rwy 29 helicopter visibility reduction below 1 SM NA.</p>	

AWOS-3 120.575	POTOMAC APP CON 119.0 282.275	UNICOM 122.725 (CTAF) 0
--------------------------	---	-----------------------------------



ELEV 15	TDZE 15
---------	---------

REIL Rws 11 and 29 **0**
MIRL Rwy 11-29 **0**

2100	ZAKLY	Visual Segment - Obstacles.	ZAKLY	4 NM Holding Pattern
CATEGORY	A	B	C	D
LNAV MDA	480-1	465 (500-1)	NA	
C CIRCLING	500-1 485 (500-1)	800-1 785 (800-1)	NA	

NE-3, 22 FEB 2024 to 21 MAR 2024

NE-3, 22 FEB 2024 to 21 MAR 2024