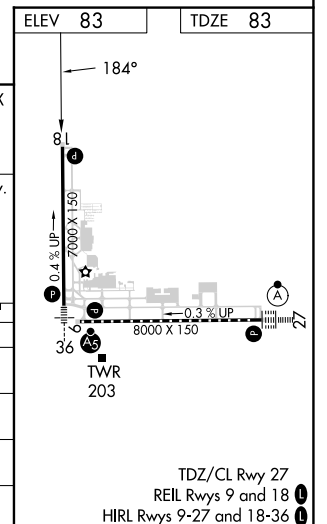
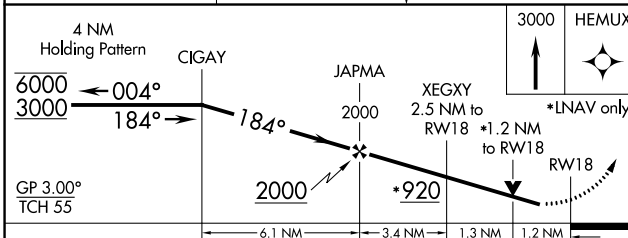
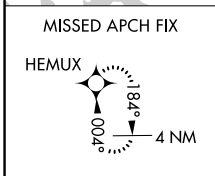
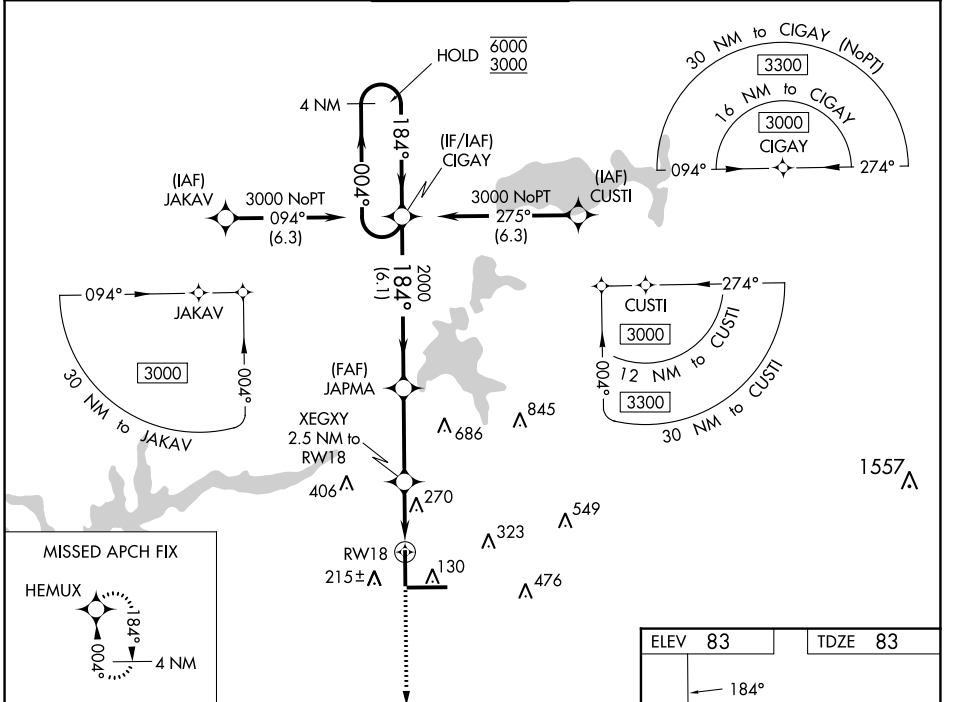


WAAS CH <b>65600</b> <b>W18A</b>	APP CRS <b>184°</b>	Rwy Idg TDZE <b>83</b> Apt Elev <b>83</b>	<b>7000</b>
--	------------------------	---	-------------

# RNAV (GPS) RWY 18

TALLAHASSEE INTL (TLH)

RNP APCH.		TALLAHASSEE APP CON *		TALLAHASSEE TOWER *		GND CON		CLNC DEL		UNICOM	
Rwy 18 helicopter visibility reduction below 3/4 SM NA. For uncompensated Baro-VNAV systems, LNAV/VNAV NA below -5°C or above 54°C.		MISSED APPROACH: Climb to 3000 direct HEMUX and hold.		<b>118.7 (CTAF) 257.8</b>		<b>121.9 348.6</b>		<b>126.65 275.8</b>		<b>123.075</b>	
ATIS <b>119.45 239.25</b>		TALLAHASSEE APP CON * <b>135.8 317.4</b>		TALLAHASSEE TOWER * <b>118.7 (CTAF) 257.8</b>		GND CON <b>121.9 348.6</b>		CLNC DEL <b>126.65 275.8</b>		UNICOM <b>123.075</b>	



CATEGORY	A	B	C	D
LPV DA		333-3/4	250 (300-3/4)	
LNAV/VNAV DA		537-1 1/2	454 (500-1 1/2)	
LNAV MDA	520-1	437 (500-1)	520-1 1/4	437 (500-1 1/4)
CIRCLING	580-1 497 (500-1)	600-1 517 (600-1)	640-1 1/2 557 (600-1 1/2)	800-2 1/4 717 (800-2 1/4)

SE-3, 22 FEB 2024 to 21 MAR 2024

SE-3, 22 FEB 2024 to 21 MAR 2024

TDZ/CL Rwy 27  
REIL Rwys 9 and 18  
HIRL Rwys 9-27 and 18-36