

17173

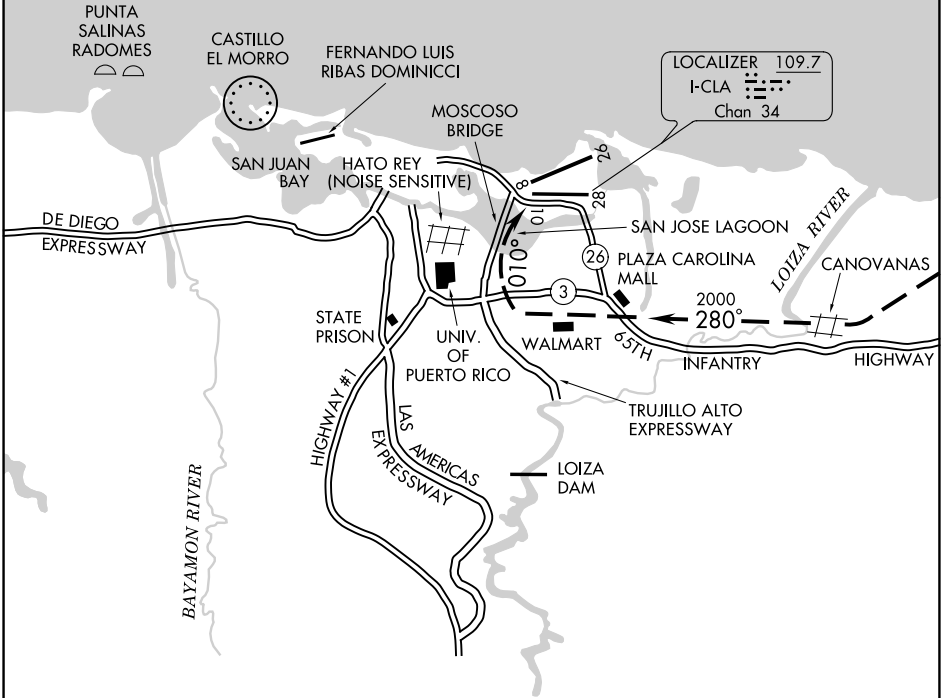
BRIDGE VISUAL RWY 10

AL-784 (FAA)

LUIS MUNOZ MARIN INTL (SJU)(TJSJ)
SAN JUAN, PUERTO RICO

D-ATIS 125.8
 SAN JUAN APP CON
 119.4 269.2 (WEST & SW)
 120.9 290.2 (NORTH & EAST)
 SAN JUAN TOWER
 132.05 257.8
 GND CON
 121.9 348.6
 CLNC DEL
 126.4 284.6
 CPDLC

RADAR REQUIRED



SE-3, 22 FEB 2024 to 21 MAR 2024

SE-3, 22 FEB 2024 to 21 MAR 2024

Weather Minima: 2500 foot ceiling and 5 mile visibility.

NOTE: Chart not to scale.

Vertical Guidance Navaid and Angle
VASI Rwy 10 (3.00°)



**BRIDGE VISUAL APPROACH RUNWAY 10
 PROCEDURE NOT AUTHORIZED AT NIGHT
 NOT AUTHORIZED FOR JETS OR FOUR ENGINE PROPS**

When cleared for the Bridge Visual Runway 10 Approach aircraft will base East of the Moscoso Bridge.

BRIDGE VISUAL RWY 10

Orig 17JUL97


SAN JUAN, PUERTO RICO
LUIS MUNOZ MARIN INTL (SJU)(TJSJ)

LOC I-CLA 109.7 Chan 34	APP CRS 101°	Rwy Idg 8016 TDZE 10 Apt Elev 10
---	------------------------	---

ILS or LOC RWY 10

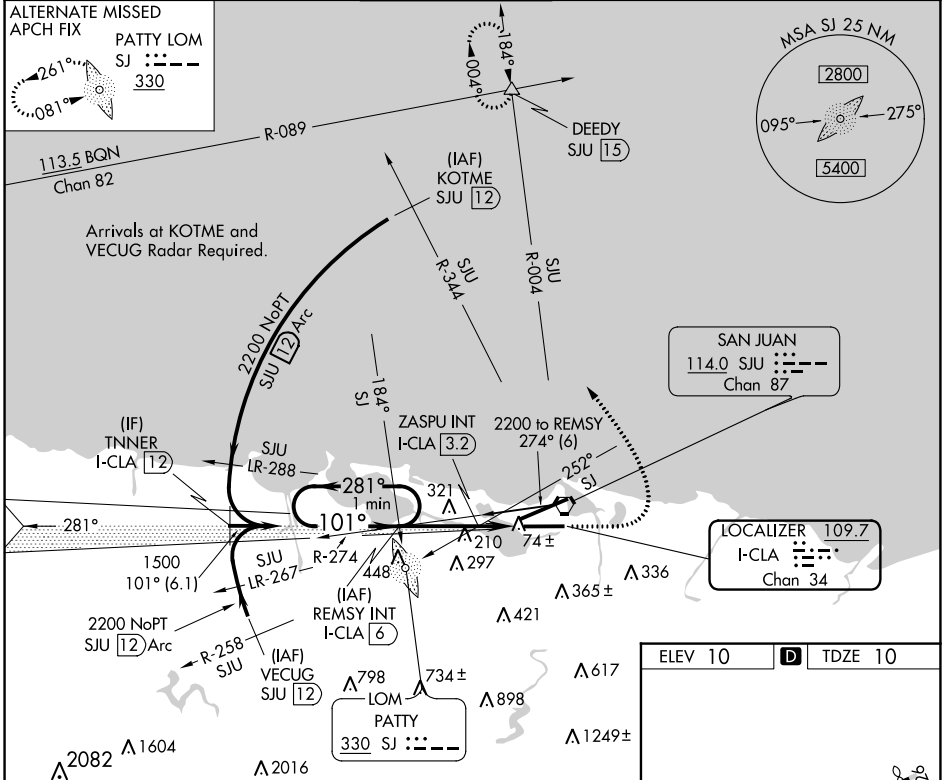
LUIS MUNOZ MARIN INTL (SJU)(TJSJ)

⚠ Circling NA for Cat E south of Rwy 10-28. For inop ALS, increase S-ILS 10 all Cat E visibility to ¾ SM and S-LOC 10 Cats C/D/E visibility to 1/8 SM.

MALSR 

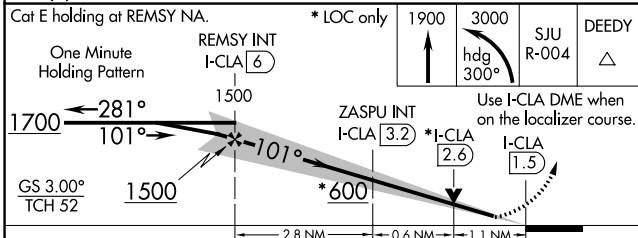
MISSED APPROACH: Climb to 1900 then climbing left turn to 3000 on heading 300° and on SJU VORTAC R-004 to DEEDY INT/SJU 15 DME and hold.

D-ATIS 125.8	SAN JUAN APP CON 119.4 269.2 (WEST & SW) 120.9 290.2 (NORTH & EAST)	SAN JUAN TOWER 132.05 257.8	GND CON 121.9 348.6	CLNC DEL 126.4 284.6	CPDLC
------------------------	---	---------------------------------------	-------------------------------	--------------------------------	-------

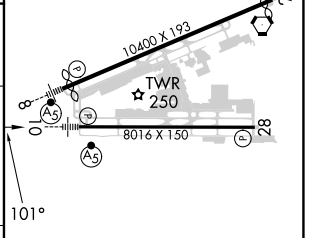


SE-3, 22 FEB 2024 to 21 MAR 2024

SE-3, 22 FEB 2024 to 21 MAR 2024



ELEV 10	D	TDZE 10
---------	----------	---------



CATEGORY	A	B	C	D	E
S-ILS 10	260-1/2 250 (300-1/2)				
S-LOC 10	420-1/2	411 (500-1/2)	420-3/4	411 (500-3/4)	
CIRCLING	600-1	590 (600-1)	740-2 730 (800-2)	920-3	910 (1000-3)

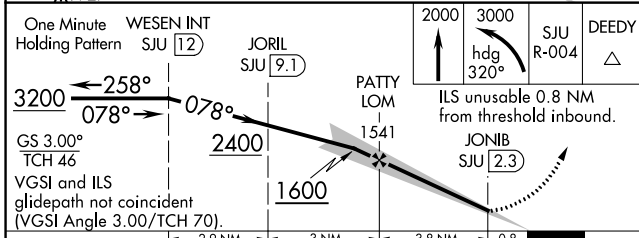
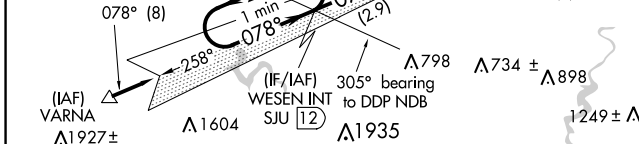
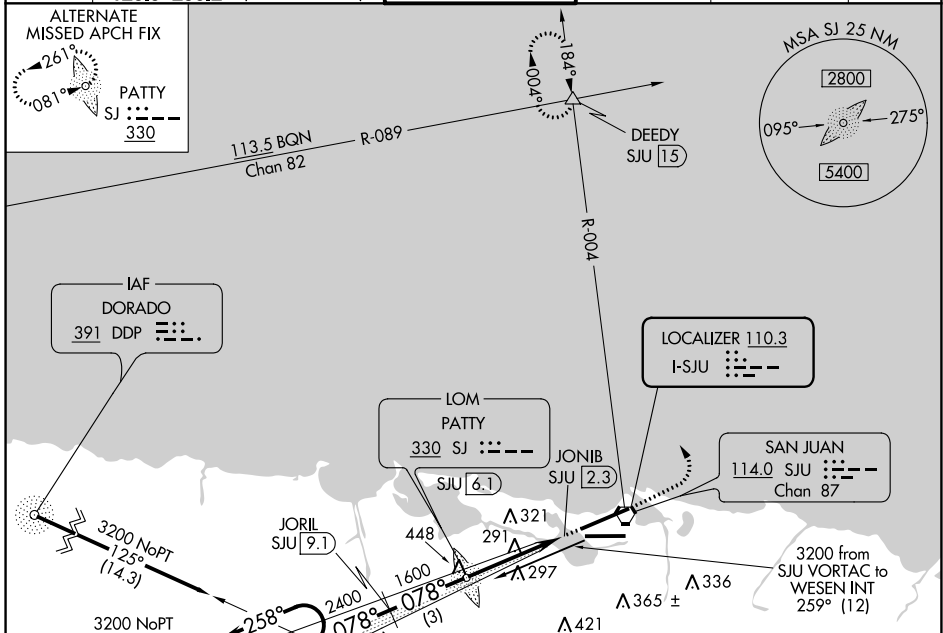
REIL Rwy 26	HIRL Rwys 8-26 and 10-28				
FAF to MAP 4.5 NM					
Knots	60	90	120	150	180
Min:Sec	4:30	3:00	2:15	1:48	1:30

LOC I-SJU 110.3	APP CRS 078°	Rwy Idg 9384
		TDZE 9
		Apt Elev 10

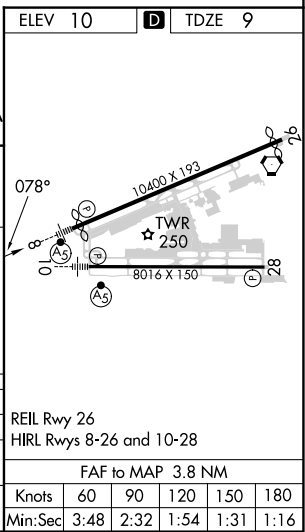
ILS or LOC RWY 8

LUIS MUNOZ MARIN INTL (SJU)(TJSJ)

DME required.		MALSR 	MISSED APPROACH: Climb to 2000 then climbing left turn to 3000 on heading 320° and SJU VORTAC R-004 to DEEDY Int/SJU 1.5 DME and hold.		
▼ For inop ALS, increase S-ILS 8 all Cats visibility to 1 SM.					
D-ATIS 125.8	SAN JUAN APP CON 119.4 269.2 (WEST & SW) 120.9 290.2 (NORTH & EAST)		SAN JUAN TOWER 132.05 257.8	GND CON 121.9 348.6	CLNC DEL 126.4 284.6
				CPDLC	



One Minute Holding Pattern	WESEN INT SJU 12	JORIL SJU 9.1	PATTY LOM	ILS unusable 0.8 NM from threshold inbound.
3200	← 258°	078° →	2400	1600
GS 3.00° TCH 46				
VGSi and ILS glidepath not coincident (VGSi Angle 3.00/TCH 70).				
CATEGORY	A	B	C	D
S- ILS-8	311-½		302 (400-½)	
S- LOC-8	560-½	551 (600-½)	560-1 551 (600-1)	560-1¼ 551 (600-1¼)
CIRCLING	600-1	590 (600-1)	740-2 730 (800-2)	920-3 910 (1000-3)



SE-3, 22 FEB 2024 to 21 MAR 2024

SE-3, 22 FEB 2024 to 21 MAR 2024

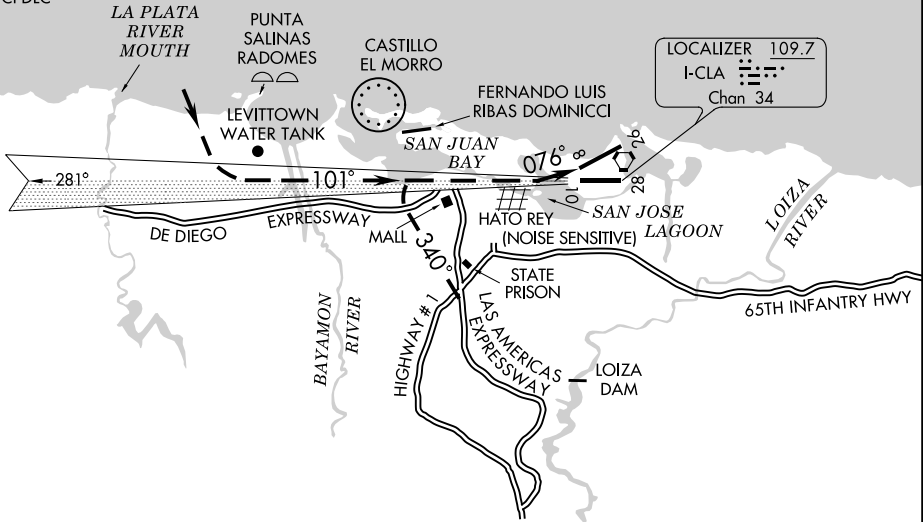
LAGOON VISUAL RWY 8

AL-784 (FAA)

LUIS MUNOZ MARIN INTL (SJU)(TJSJ)
SAN JUAN, PUERTO RICO

D-ATIS 125.8
 SAN JUAN APP CON
 119.4 269.2 (WEST & SW)
 120.9 290.2 (NORTH & EAST)
 SAN JUAN TOWER
 132.05 257.8
 GND CON
 121.9 348.6
 CLNC DEL
 126.4 284.6
 CPDLC

RADAR REQUIRED



Vertical Guidance Navaid
 and Angle
 VASI Rwy 8 (3.00°)

Weather Minima: 2000 foot
 ceiling and 5 mile visibility.
 NOTE: Chart not to scale.

LAGOON VISUAL APPROACH RUNWAY 8 PROCEDURE NOT AUTHORIZED AT NIGHT

When cleared for the Lagoon Visual Runway 8 Approach aircraft will proceed visually to intercept and fly the Runway 10 final approach course until the west end of the San Jose Lagoon, then make left turn to land Runway 8.

LAGOON VISUAL RWY 8

Amdt 1 27MAY93

SAN JUAN, PUERTO RICO
LUIS MUNOZ MARIN INTL (SJU)(TJSJ)

SE-3, 22 FEB 2024 to 21 MAR 2024

SE-3, 22 FEB 2024 to 21 MAR 2024

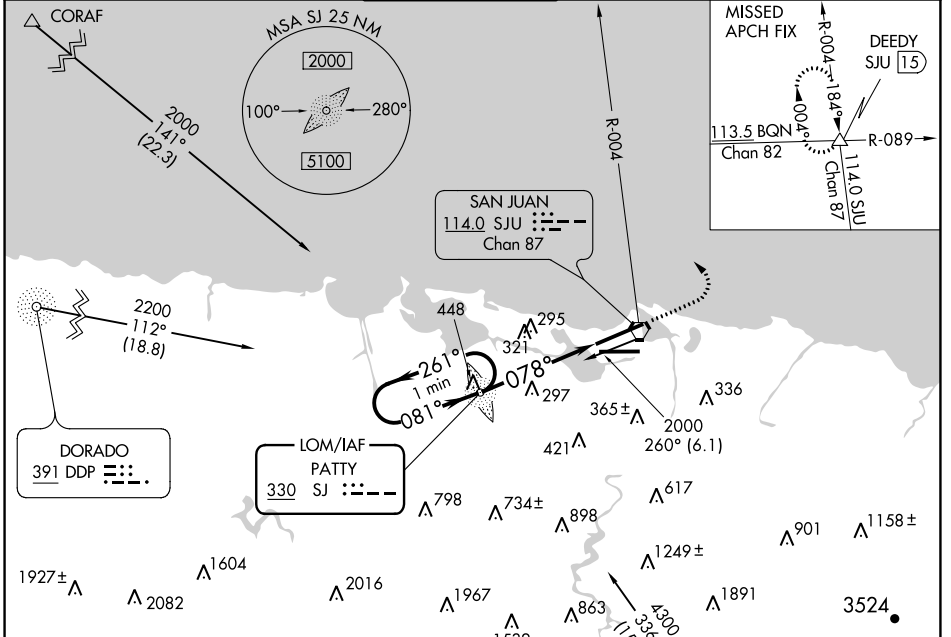
NDB RWY 8

LUIS MUNOZ MARIN INTL (SJU)(TJSJ)

LOM SJ	APP CRS	Rwy Idg	9384
330	078°	TDZE	9
		Apt Elev	10

	MISSED APPROACH: Climb to 2000, then climbing left turn to 3000 via SJU VORTAC R-004 to DEEDY Int/SJU 15 DME and hold.			
	SAN JUAN APP CON 119.4 269.2 (WEST & SW) 120.9 290.2 (NORTH & EAST)			

D-ATIS	SAN JUAN TOWER	GND CON	CLNC DEL	CPDLC
125.8	132.05 257.8	121.9 348.6	126.4 284.6	



ELEV 10	D	TDZE 9
---------	----------	--------



REIL Rwy 26
HIRL Rlys 8-26 and 10-28
FAF to MAP 4.6 NM

Knots	60	90	120	150	180
Min:Sec	4:36	3:04	2:18	1:50	1:32

One Minute Holding Pattern

PATTY LOM

2000	3000	DEEDY
↑	↻ SJU R-004	△

VGSI and descent angles not coincident (VGSI Angle 3.00/TCH 70).

CATEGORY	A	B	C	D
S-8	600-¾ 591 (600-¾)		600-1 591 (600-1)	600-1½ 591 (600-1½)
CIRCLING	600-1 590 (600-1)		740-2 730 (800-2)	920-3 910 (1000-3)

SE-3, 22 FEB 2024 to 21 MAR 2024


SE-3, 22 FEB 2024 to 21 MAR 2024

APP CRS	Rwy ldg	8016
101°	TDZE	10
	Apt Elev	10

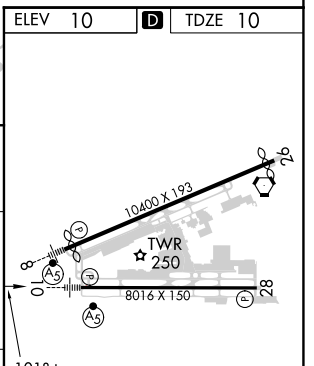
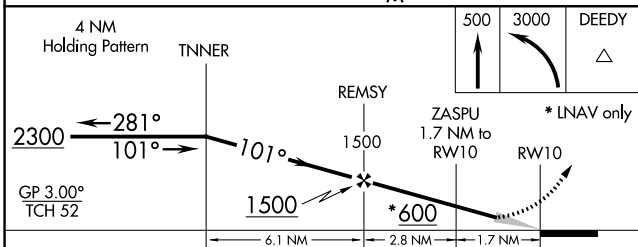
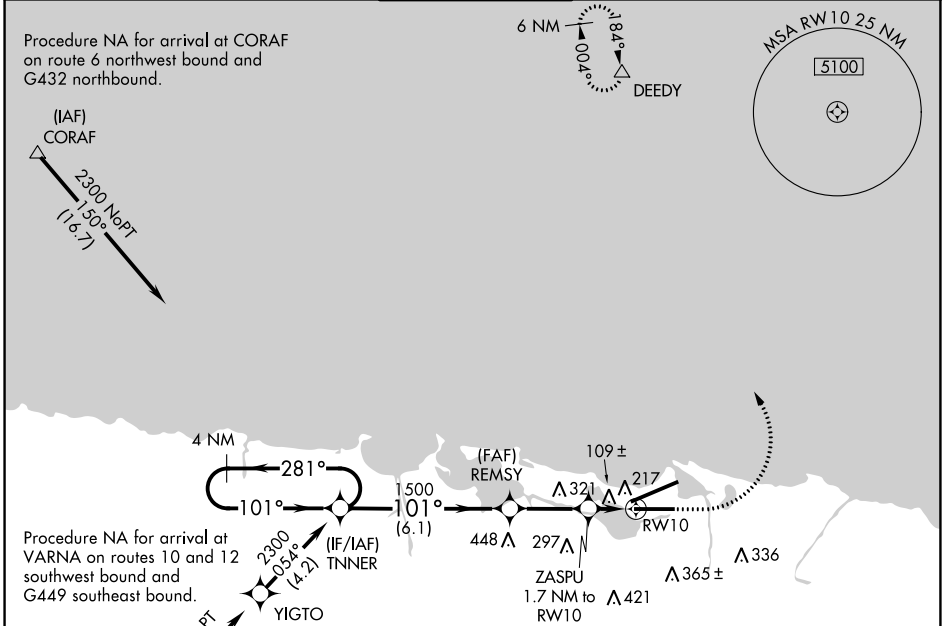
RNAV (GPS) RWY 10

LUIS MUNOZ MARIN INTL (SJU)(TJSJ)

⚠ WAAS VNAV NA. For uncompensated Baro-VNAV systems, LNAV/VNAV NA below -15°C (5°F) or above 54°C (130°F). DME/DME RNP-0.3 NA. For inop MALSRL, increase LNAV/VNAV visibility all Cats to 1¼ and increase LNAV Cats C/D visibility to 1⅓.

MALSRL
 MISSED APPROACH: Climb to 500 then climbing left turn to 3000 direct DEEDY and hold.

D-ATIS	SAN JUAN APP CON	SAN JUAN TOWER	GND CON	CLNC DEL	CPDLC
125.8	119.4 269.2 (WEST & SW) 120.9 290.2 (NORTH & EAST)	132.05 257.8	121.9 348.6	126.4 284.6	



CATEGORY	A	B	C	D
LNAV/VNAV DA	408-7/8 398 (400-7/8)			
LNAV MDA	480-1/2	470 (500-1/2)	480-1	470 (500-1)
C CIRCLING	600-1	590 (600-1)	740-2 730 (800-2)	920-3 910 (1000-3)

SE-3, 22 FEB 2024 to 21 MAR 2024

SE-3, 22 FEB 2024 to 21 MAR 2024

APP CRS	Rwy Idg	9908
258°	TDZE	7
	Apt Elev	10

RNAV (GPS) RWY 26

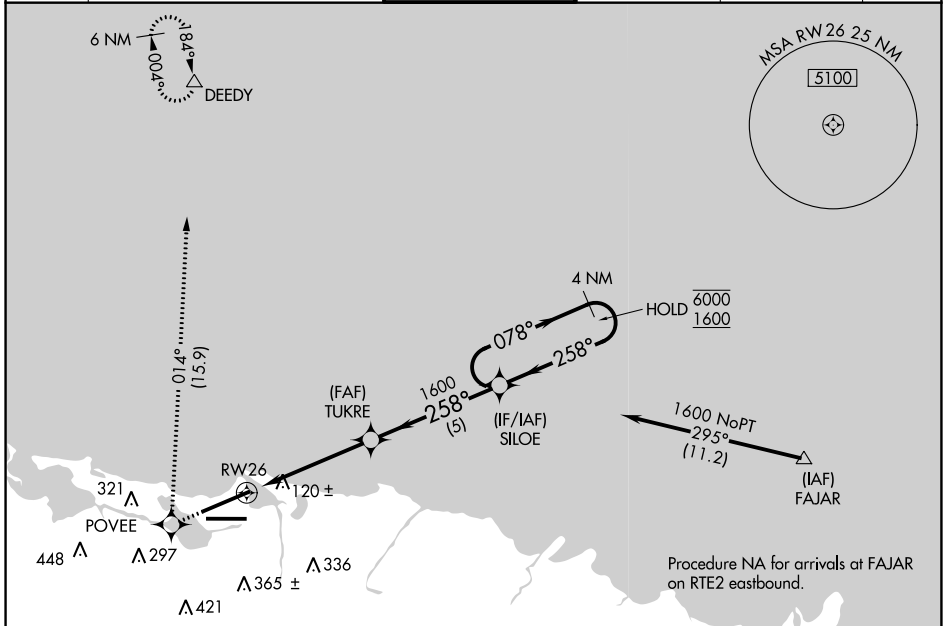
LUIS MUNOZ MARIN INTL (SJU)(TJSJ)

RNP APCH.

▼ For uncompensated Baro-VNAV systems, LNAV/VNAV
 ▲ NA below 22°C or above 54°C.

MISSED APPROACH: Climb to 3000 direct POVEE and right turn on track 014° direct DEEDY and hold.

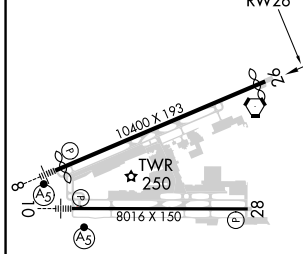
D-ATIS	SAN JUAN APP CON	SAN JUAN TOWER	GND CON	CLNC DEL	CPDLC
125.8	119.4 269.2 120.9 290.2 (WEST & SW) (NORTH & EAST)	132.05 257.8	121.9 348.6	126.4 284.6	



SE-3, 22 FEB 2024 to 21 MAR 2024

SE-3, 22 FEB 2024 to 21 MAR 2024

ELEV 10	D	TDZE 7
---------	----------	--------



REIL Rwy 26
 HIRL Rwy 8-26 and 10-28

3000	POVEE	014° tr	DEEDY	4 NM Holding Pattern
*LNAV only				
*1.1 NM to RWY 26		TUKRE 1600	SILOE	078° → 6000 ← 258° 1600
1.1 NM		3.7 NM	5 NM	GP 3.00° TCH 55
CATEGORY	A	B	C	D
LNAV/VNAV DA	384-1¼ 377 (400-1¼)			
LNAV MDA	400-1	393 (400-1)	400-1½ 393 (400-1½)	400-1¼ 393 (400-1¼)
C CIRCLING	600-1	590 (600-1)	740-2 730 (800-2)	920-3 910 (1000-3)

SAN JUAN, PUERTO RICO
 Orig-C 10OCT19

18°26'N-66°00'W

RNAV (GPS) RWY 26

LUIS MUNOZ MARIN INTL (SJU)(TJSJ)

APP CRS	Rwy ldg	8016
281°	TDZE	10
	Apt Elev	10

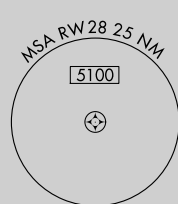
RNAV (GPS) RWY 28

LUIS MUNOZ MARIN INTL (SJU)(TJSJ)

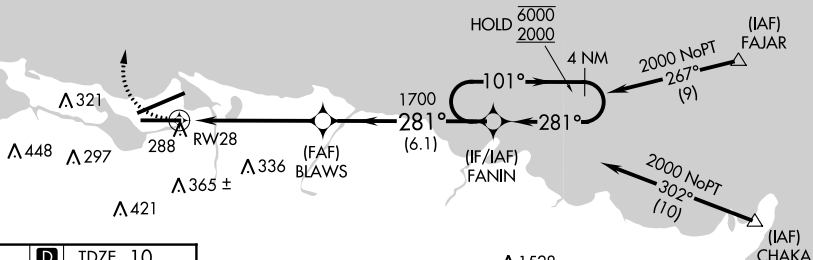
RNP APCH.
 Rwy 28 helicopter visibility reduction below 3/4 SM NA.

MISSED APPROACH: Climbing right turn to 3000 direct DEEDY and hold.

D-ATIS	SAN JUAN APP CON	SAN JUAN TOWER	GND CON	CLNC DEL	CPDLC
125.8	119.4 269.2 (WEST & SW) 120.9 290.2 (NORTH & EAST)	132.05 257.8	121.9 348.6	126.4 284.6	

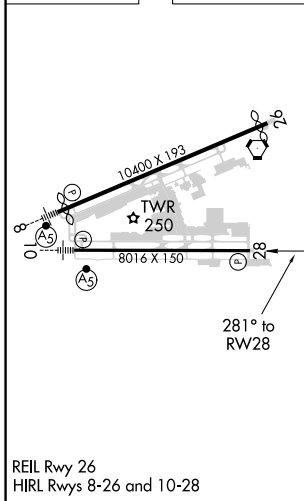


Procedure NA for arrivals at FAJAR on RTE2 eastbound.

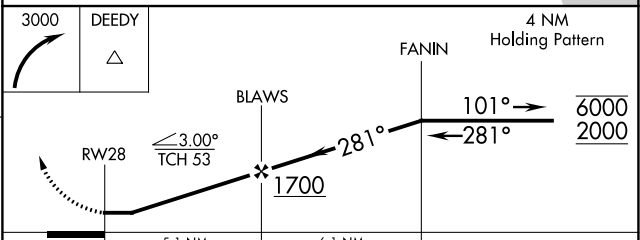


Procedure NA for arrivals at CHAKA on RTE6 southeast bound.

ELEV 10	D	TDZE 10
---------	----------	---------



REIL Rwy 26
 HIRL Rwy 8-26 and 10-28



CATEGORY	A	B	C	D
LNAV MDA	540-1	530 (600-1)	540-1½	530 (600-1½)
C CIRCLING	600-1	590 (600-1)	740-2 730 (800-2)	920-3 910 (1000-3)

SE-3, 22 FEB 2024 to 21 MAR 2024

SE-3, 22 FEB 2024 to 21 MAR 2024

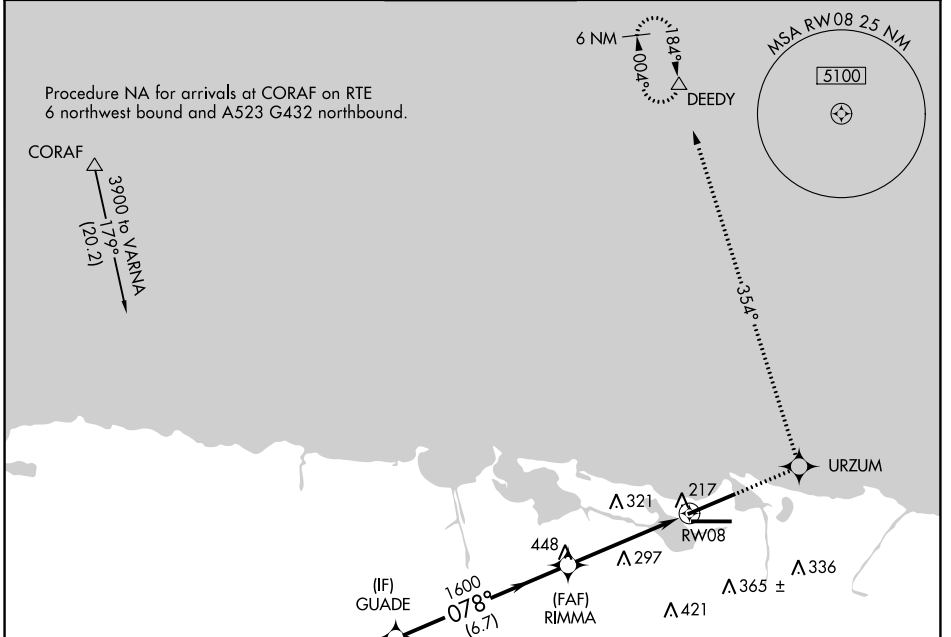
APP CRS	Rwy Idg	9384
078°	TDZE	9
	Apt Elev	10

RNAV (GPS) RWY 8

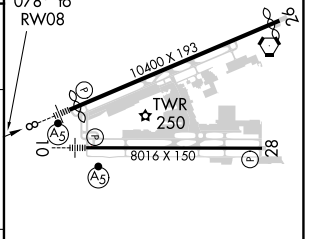
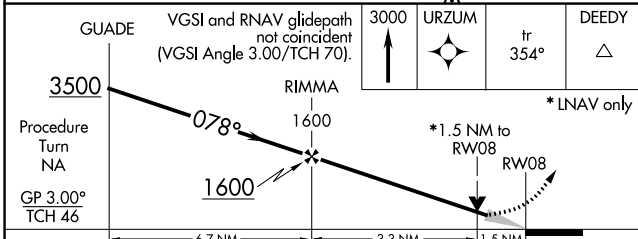
LUIS MUNOZ MARIN INTL (SJU)(TJSJ)

⚠	WAAS VNAV NA. For uncompensated Baro-VNAV systems, LNAV/VNAV NA below -15°C (5°F) or above 48°C (118°F). DME/DME RNP-0.3 NA.	MALSR 	MISSED APPROACH: Climb to 3000 direct URZUM and on track 354° to DEEDY and hold.
----------	--	------------------	--

D-ATIS	SAN JUAN APP CON	SAN JUAN TOWER	GND CON	CLNC DEL	CPDLC
125.8	119.4 269.2 (WEST & SW) 120.9 290.2 (NORTH & EAST)	132.05 257.8	121.9 348.6	126.4 284.6	



ELEV 10	D	TDZE 9
---------	----------	--------



PROCEDURE	TURN NA	GP 3.00°	TCH 46	
CATEGORY	A	B	C	D
LNAV/VNAV DA	530-1¼ 521 (600-1¼)			
LNAV MDA	560-½ 551 (600-½)	560-1 551 (600-1)		560-1¼ 551 (600-1¼)
C CIRCLING	600-1 590 (600-1)	740-2 730 (800-2)	920-3 910 (1000-3)	

SE-3, 22 FEB 2024 to 21 MAR 2024

SE-3, 22 FEB 2024 to 21 MAR 2024

VORTAC SJU 114.0 Chan 87	APP CRS 082°	Rwy Idg TDZE Apt Elev	8016 10 10
--	------------------------	-----------------------------	---------------------------------------

VOR or TACAN RWY 10

LUIS MUNOZ MARIN INTL (SJU)(TJSJ)

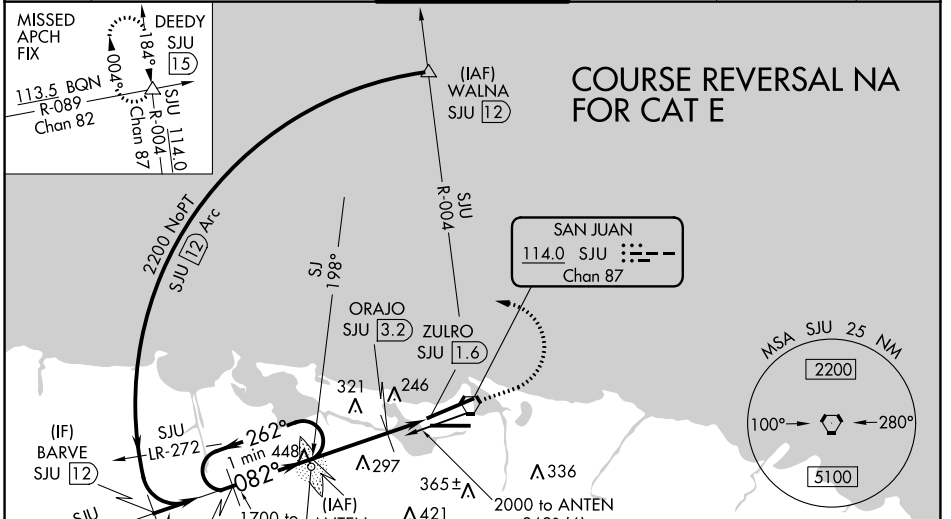
ADF or DME required.

▼ Straight-in Rwy 10 NA at night, operational VGSI required, remain on or above VGSI glidepath until threshold. Circling NA for Cat E south of Rwy 10-28.
▲ Inop table does not apply to S-10 Cats A, B and ORAJO fix minimums S-10 Cats A, B. For inop ALS, increase S-10 Cats C/D/E visibility to 1¼ SM; increase ORAJO fix minimums S-10 Cats C/D/E visibility to 1¼ SM. Rwy 10 helicopter visibility reduction below 1 SM NA.

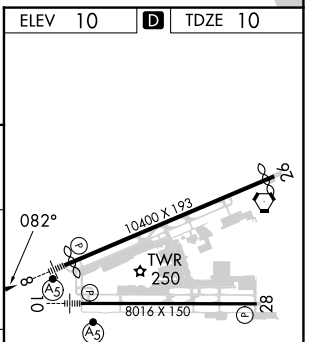
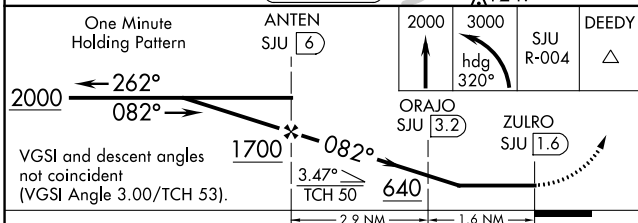
MALSR

MISSED APPROACH: Climb to 2000 then climbing left turn to 3000 on heading 320° and SJU VORTAC R-004 to DEEDY INT/15 DME and hold.

D-ATIS 125.8	SAN JUAN APP CON 119.4 269.2 (WEST & SW) 120.9 290.2 (NORTH & EAST)	SAN JUAN TOWER 132.05 257.8	GND CON 121.9 348.6	CLNC DEL 126.4 284.6	CPDLC
------------------------	---	---------------------------------------	-------------------------------	--------------------------------	-------



ELEV 10	D	TDZE 10
---------	----------	---------



CATEGORY	A	B	C	D	E
S-10	640-1	630 (700-1)	640-1¾		630 (700-1¾)
CIRCLING	640-1	630 (700-1)	740-2 730 (800-2)	920-3	910 (1000-3)
ORAJO FIX MINIMUMS (DME REQUIRED)					
S-10	500-1 490 (500-1)				
CIRCLING	600-1	590 (600-1)	740-2 730 (800-2)	920-3	910 (1000-3)

REIL Rwy 26
HIRL Rwy 8-26 and 10-28

FAF to MAP 4.5 NM

Knots	60	90	120	150	180
Min:Seq	4:30	3:00	2:15	1:48	1:30

SE-3, 22 FEB 2024 to 21 MAR 2024

SE-3, 22 FEB 2024 to 21 MAR 2024

VORTAC SJU 114.0 Chan 87	APP CRS 249°	Rwy Idg TDZE 7 Apt Elev 10	9908
--	------------------------	--	-------------

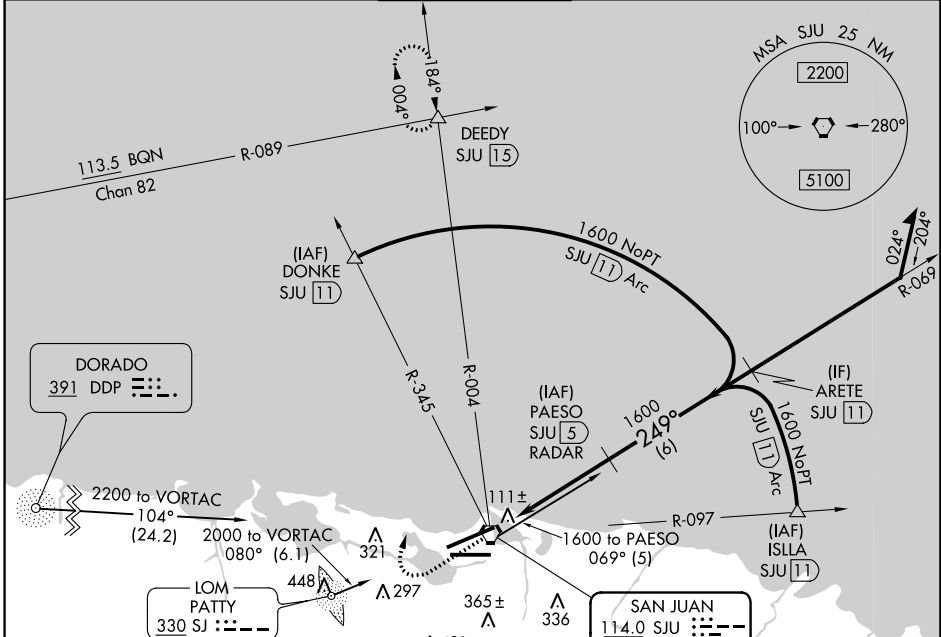
VOR or TACAN RWY 26
LUIS MUNOZ MARIN INTL (SJU)(TJSJ)

DME or RADAR required.

▼ Rwy 26 helicopter visibility reduction below ¼ SM NA.
 ▲ Circling NA for Cat E south of Rwy 10-28.

MISSED APPROACH: Climb to 2000 then climbing right turn to 3000 via heading 045° and SJU VORTAC R-004 to DEEDY INT/SJU 15 DME and hold.

D-ATIS 125.8	SAN JUAN APP CON 119.4 269.2 (WEST & SW) 120.9 290.2 (NORTH & EAST)	SAN JUAN TOWER 132.05 257.8	GND CON 121.9 348.6	CLNC DEL 126.4 284.6	CPDLC
------------------------	---	---------------------------------------	-------------------------------	--------------------------------	-------



SE-3, 22 FEB 2024 to 21 MAR 2024

SE-3, 22 FEB 2024 to 21 MAR 2024

ELEV 10	D	TDZE 7
---------	----------	--------

REIL Rwy 26
HIRL Rws 8-26 and 10-28

2000	3000	SJU R-004	DEEDY	PAESO SJU (5)/RADAR	Remain within 15 NM
↑		hdg 045°	△	069°	
		3.00°	1600	249°	1600
		TCH 45	4.9 NM		

CATEGORY	A	B	C	D	E
S-26	440-1	433 (500-1)	440-1¼ 433 (500-1¼)	440-1½	433 (500-1½)
CIRCLING	600-1	590 (600-1)	740-2 730 (800-2)	920-3	910 (1000-3)

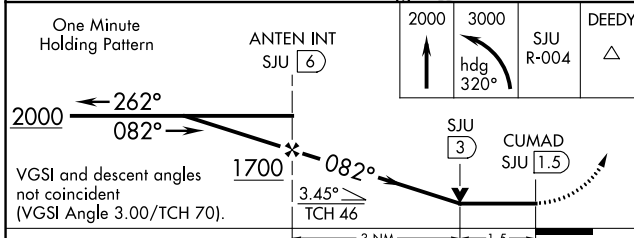
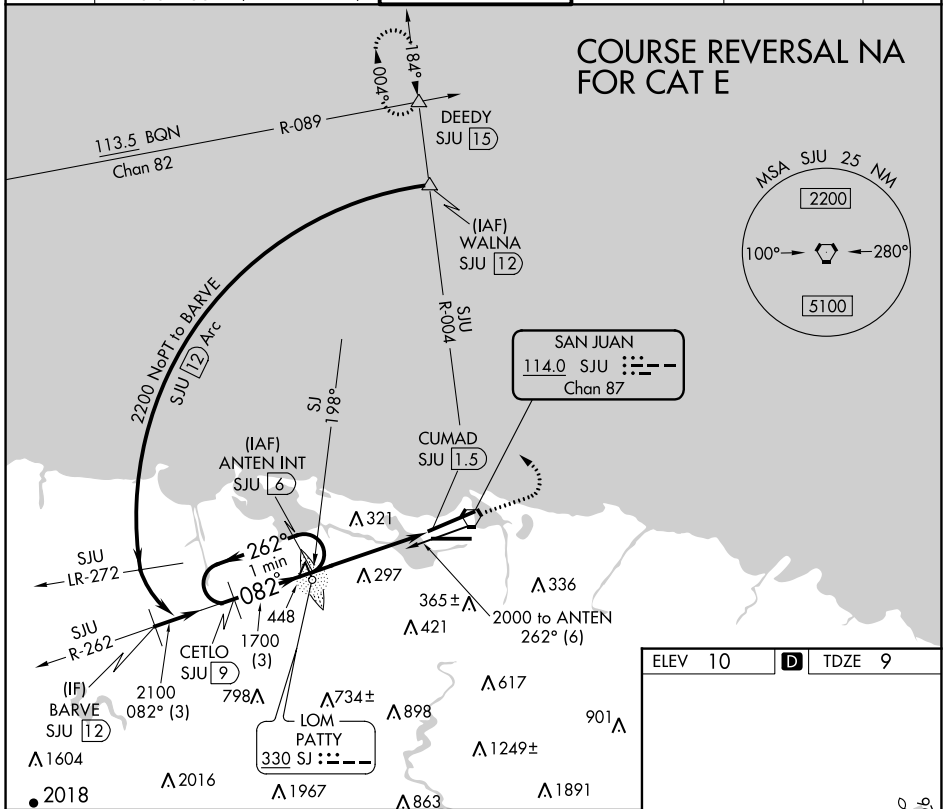
VORTAC SJU 114.0	APP CRS 082°	Rwy Idg TDZE Apt Elev	9384 9 10
Chan 87			

VOR or TACAN RWY 8

LUIS MUNOZ MARIN INTL (SJU)(TJSJ)

ADF or DME required.	MALSR	MISSED APPROACH: Climb to 2000 then climbing left turn to 3000 via heading 320° and SJU VORTAC R-004 outbound to DEEDY INT/SJU 15 DME and hold.
▼ For inop ALS, increase S-8 Cat E visibility to 2 SM.	AS	
▲ Circling NA for Cat E south of Rwy 10-28.		

D-ATIS 125.8	SAN JUAN APP CON 119.4 269.2 (WEST & SW) 120.9 290.2 (NORTH & EAST)	SAN JUAN TOWER 132.05 257.8	GND CON 121.9 348.6	CLNC DEL 126.4 284.6	CPDLC
------------------------	---	---------------------------------------	-------------------------------	--------------------------------	-------



ELEV 10	D	TDZE 9
---------	---	--------

REIL Rwy 26	HIRL Rwy 8-26 and 10-28
FAF to MAP 4.5 NM	
Knots	60 90 120 150 180
Min:Seq	4:30 3:00 2:15 1:48 1:30

SE-3, 22 FEB 2024 to 21 MAR 2024

SE-3, 22 FEB 2024 to 21 MAR 2024