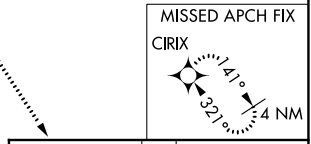
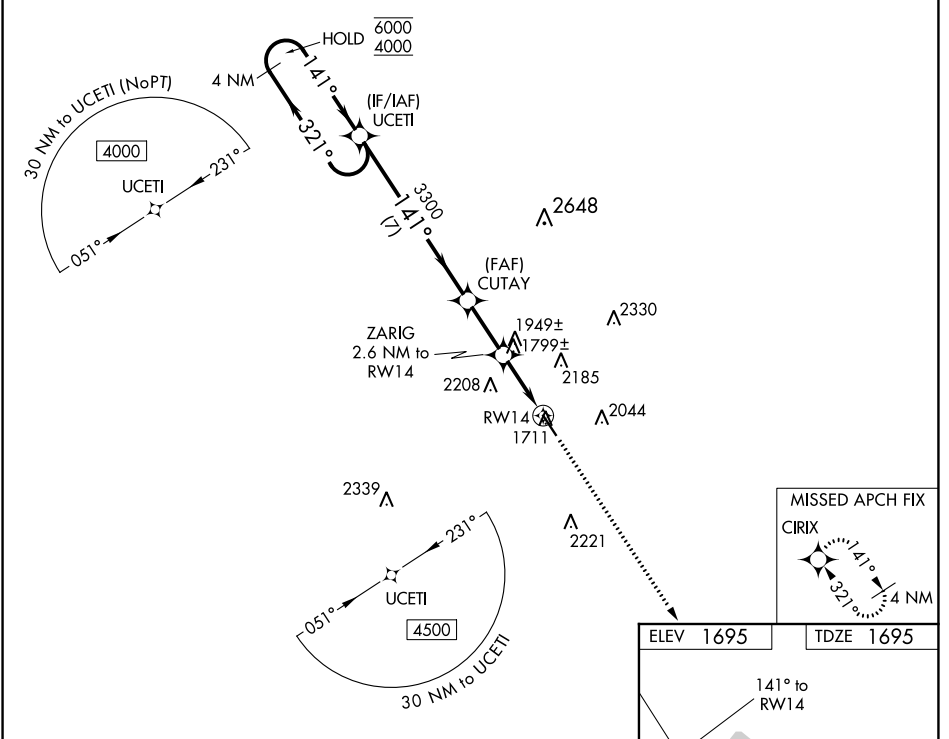


WAAS CH 78030 W14A	APP CRS 141°	Rwy Idg TDZE Apt Elev	5001 1695 1695
--	------------------------	-----------------------------	---

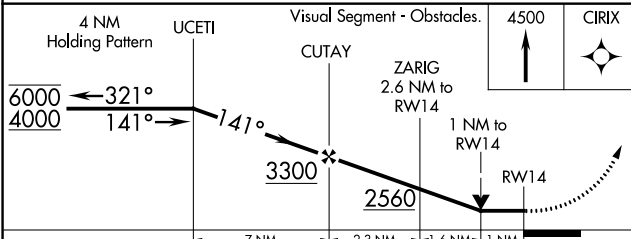
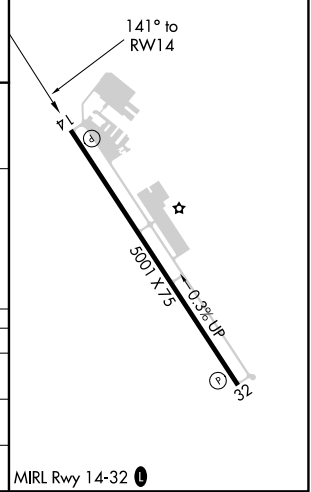
RNAV (GPS) RWY 14

GILLESPIE COUNTY (T82)

RNP APCH.		MISSED APPROACH: Climb to 4500 direct CIRIX and hold.	
AWOS-3 120.0	HOUSTON CENTER 134.2 307.3	GCO 121.725	UNICOM 122.7 (CTAF) 0



ELEV 1695	TDZE 1695
-----------	-----------



CATEGORY	A	B	C	D
LP MDA	2060-1 365 (400-1)			NA
LNAV MDA	2200-1	505 (600-1)	2200-1 ³ / ₈ 505 (600-1 ³ / ₈)	NA
CIRCLING	2200-1 505 (600-1)	2340-1 645 (700-1)	2480-2 ¹ / ₄ 785 (800-2 ¹ / ₄)	NA

SC-3, 04 NOV 2021 to 02 DEC 2021

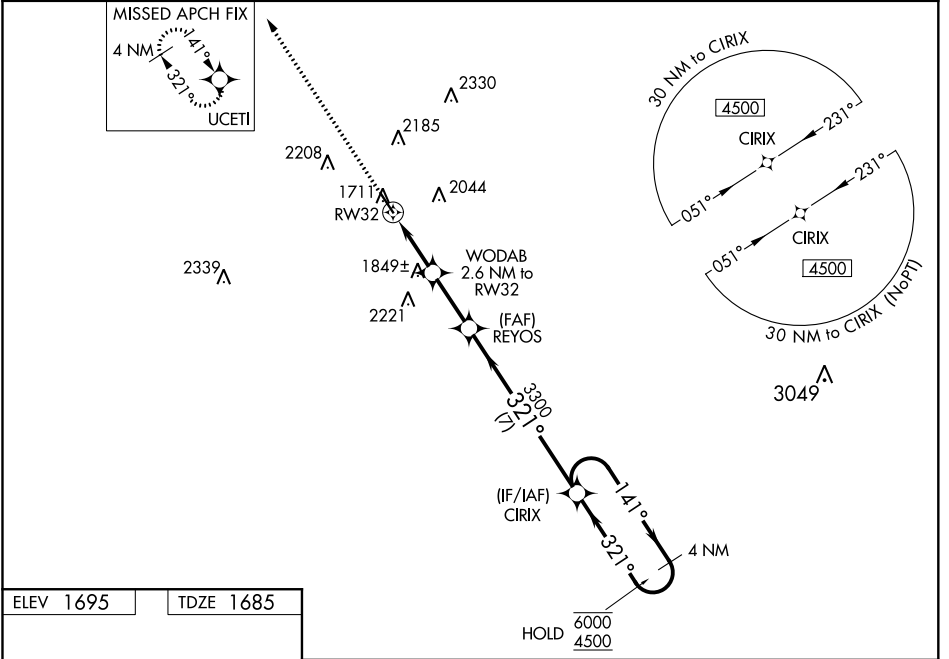
SC-3, 04 NOV 2021 to 02 DEC 2021

WAAS CH 81930 W32A	APP CRS 321°	Rwy Idg TDZE Apt Elev	5001 1685 1695
--	------------------------	-----------------------------	---

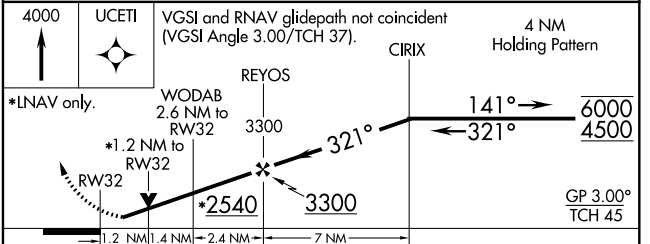
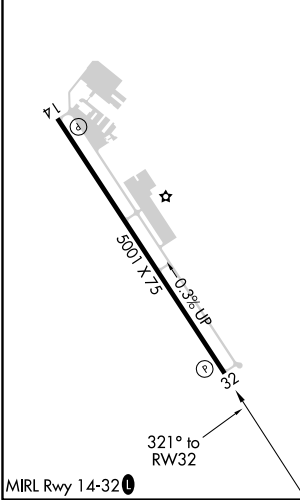
RNAV (GPS) RWY 32

GILLESPIE COUNTY (T82)

RNP APCH.		MISSED APPROACH: Climb to 4000 direct UCETI and hold.	
AWOS-3 120.0	HOUSTON CENTER 134.2 307.3	GCO 121.725	UNICOM 122.7 (CTAF) 0



ELEV 1695	TDZE 1685
-----------	-----------



CATEGORY	A	B	C	D
LPV DA	1935-1	250 (300-1)		NA
LNAV/VNAV DA	1967-1	282 (300-1)		NA
LNAV MDA	2100-1	415 (500-1)	2100-1¼ 415 (500-1¼)	NA
CIRCLING	2200-1 505 (600-1)	2340-1 645 (700-1)	2480-2¼ 785 (800-2¼)	NA

SC-3, 04 NOV 2021 to 02 DEC 2021

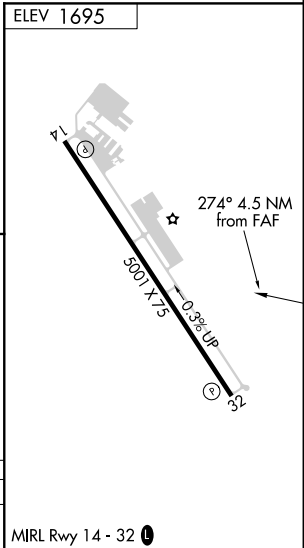
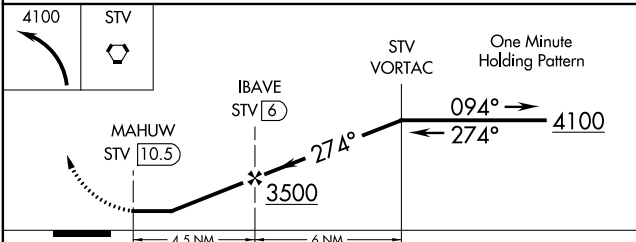
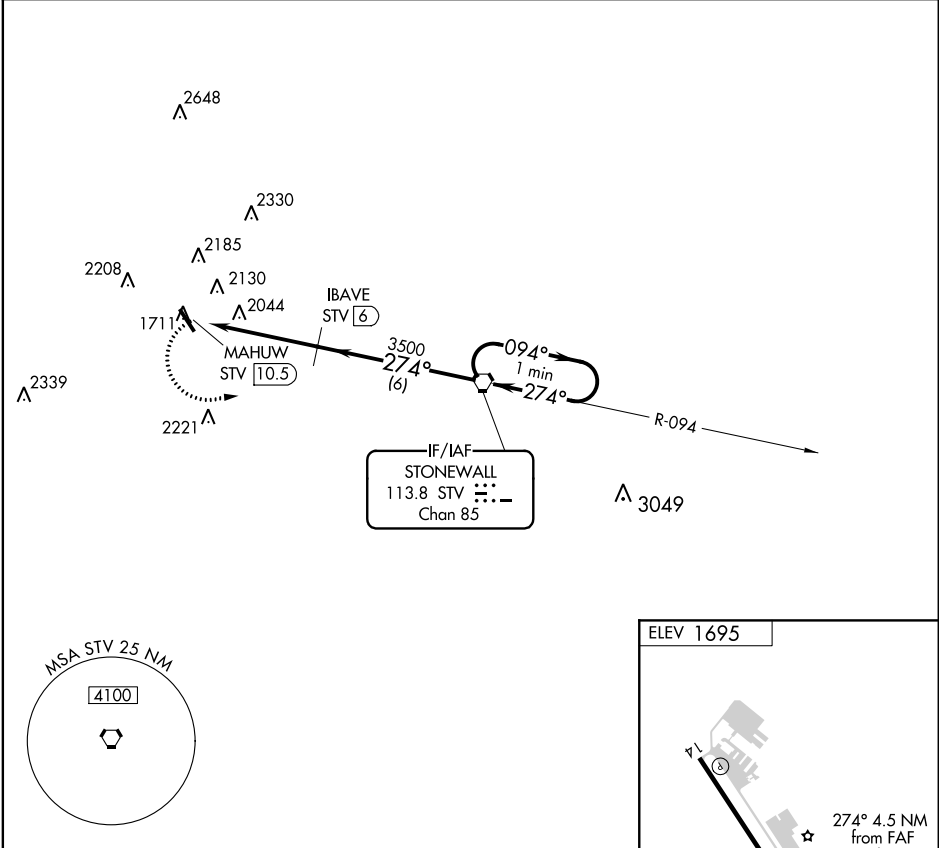
SC-3, 04 NOV 2021 to 02 DEC 2021

VORTAC STV 113.8 Chan 85	APP CRS 274°	Rwy Idg TDZE Apt Elev N/A N/A 1695
--	------------------------	--

VOR/DME-A
GILLESPIE COUNTY (T82)

<p>▼ When local altimeter setting not received, use Kerrville altimeter setting and increase MDA 60 feet and Cat C visibility ¼ mile.</p> <p>▲</p>	<p>MISSED APPROACH: Climbing left turn to 4100 direct STV VORTAC and hold.</p>
--	--

<p>AWOS-3 120.0</p>	<p>HOUSTON CENTER 134.2 307.3</p>	<p>GCO 121.725</p>	<p>UNICOM 122.7 (CTAF) 0</p>
--------------------------------	--	-------------------------------	---



CATEGORY	A	B	C	D
CIRCLING	2440-1 745 (800-1)	2440-1¼ 745 (800-1¼)	2480-2¼ 785 (800-2¼)	NA

SC-3, 04 NOV 2021 to 02 DEC 2021

SC-3, 04 NOV 2021 to 02 DEC 2021