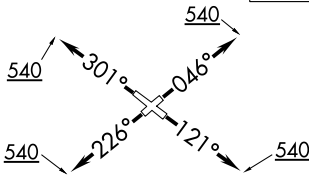


WATFO SIX DEPARTURE (RNAV)

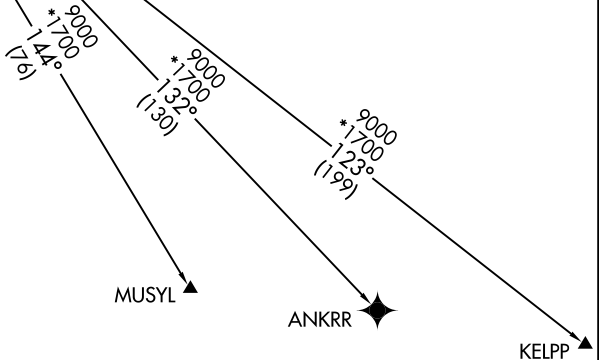
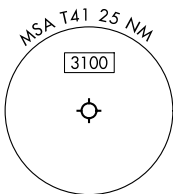
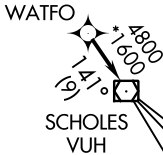
RNAV 1 - DME/DME/IRU or GPS.
RADAR required.

**TOP ALTITUDE:
ASSIGNED BY ATC**

CTAF 122.7
CLNC DEL 125.6
HOUSTON DEP CON 134.45 284.0



TAKEOFF MINIMUMS:
Rwy 5, 12, 23, 30: Standard with minimum climb of 500'/NM to 540.



NOTE: Chart not to scale.



DEPARTURE ROUTE DESCRIPTION

TAKEOFF RUNWAY 5: Climb on heading 046° to 540, for RADAR vectors to WATFO, thence. . . .

TAKEOFF RUNWAY 12: Climb on heading 121° to 540, for RADAR vectors to WATFO, thence. . . .

TAKEOFF RUNWAY 23: Climb on heading 226° to 540, for RADAR vectors to WATFO, thence. . . .

TAKEOFF RUNWAY 30: Climb on heading 301° to 540, for RADAR vectors to WATFO, thence. . . .

. . . on track 141° to VUH VOR/DME, then on (transition). Maintain ATC assigned altitude.
Expect filed altitude 10 minutes after departure.

ANKRR TRANSITION (WATFO6.ANKRR)

KELPP TRANSITION (WATFO6.KELPP)

MUSYL TRANSITION (WATFO6.MUSYL)

WATFO SIX DEPARTURE (RNAV)