

| | | | |
|--|------------------------|-----------------------------|---|
| WAAS CH 86919 W17A | APP CRS 174° | Rwy Idg TDZE Apt Elev | 5997 1073 1073 |
|--|------------------------|-----------------------------|---|

RNAV (GPS) RWY 17

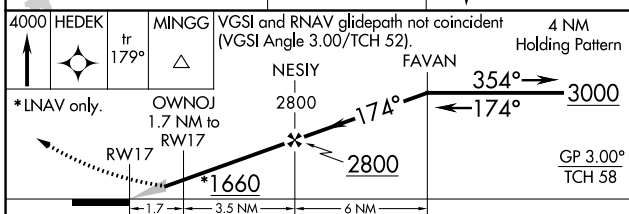
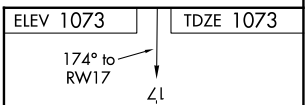
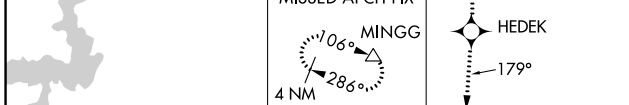
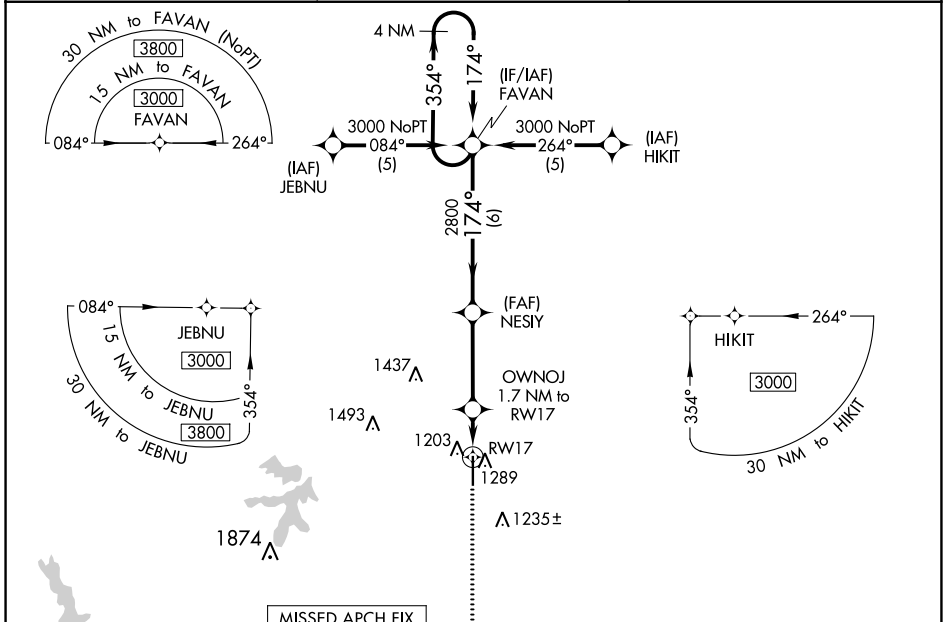
SHAWNEE RGNL (SNL)

⚠ Baro-VNAV NA when using Seminole altimeter setting. For uncompensated Baro-VNAV systems, LNAV/VNAV NA below -17°C (2°F) or above 54°C (130°F).
⚠ DME/DME RNP-0.3 NA. When local altimeter setting not received, use Seminole altimeter setting: increase LPV DA to 1313 feet; increase LNAV/VNAV DA to 1487 feet and visibility ¼ SM; increase all MDAs 40 feet and visibility Cat C ¼ SM.

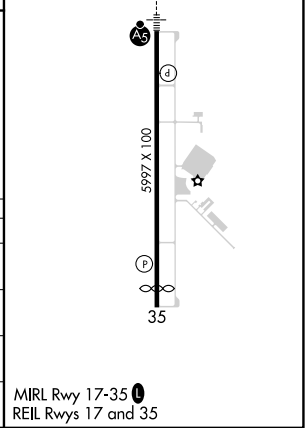


MISSED APPROACH: Climb to 4000 direct HEDEK and on track 179° to MINGG and hold.

| | | |
|--------------------------|---|-------------------------------|
| AWOS-3 118.275 | OKE CITY APP CON 120.45 288.325 | UNICOM 122.7 (CTAF) |
|--------------------------|---|-------------------------------|



| CATEGORY | A | B | C | D |
|-------------------|--------|-------------|-------------------------|----|
| LPV DA | 1273-½ | 200 (200-½) | | NA |
| LNAV/VNAV DA | 1447-¾ | 374 (400-¾) | | NA |
| LNAV MDA | 1540-½ | 467 (500-½) | 1540-¾ 467 (500-¾) | NA |
| C CIRCLING | 1600-1 | 527 (600-1) | 1640-1½ 567 (600-1½) | NA |



SC-1, 22 FEB 2024 to 21 MAR 2024

SC-1, 22 FEB 2024 to 21 MAR 2024