

WAAS CH 90208 W18A	APP CRS 181°	Rwy ldg 4997 TDZE 1191 Apt Elev 1191
--	------------------------	---

RNAV (GPS) RWY 18

SMITH FLD (SLG)

RNP APCH-GPS.

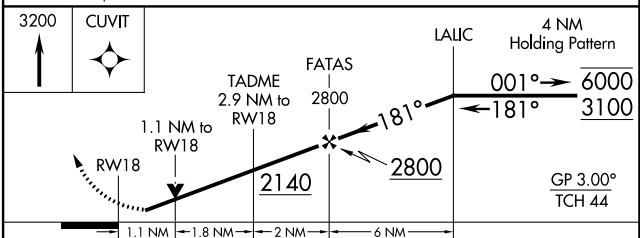
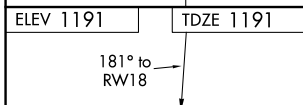
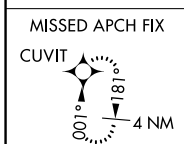
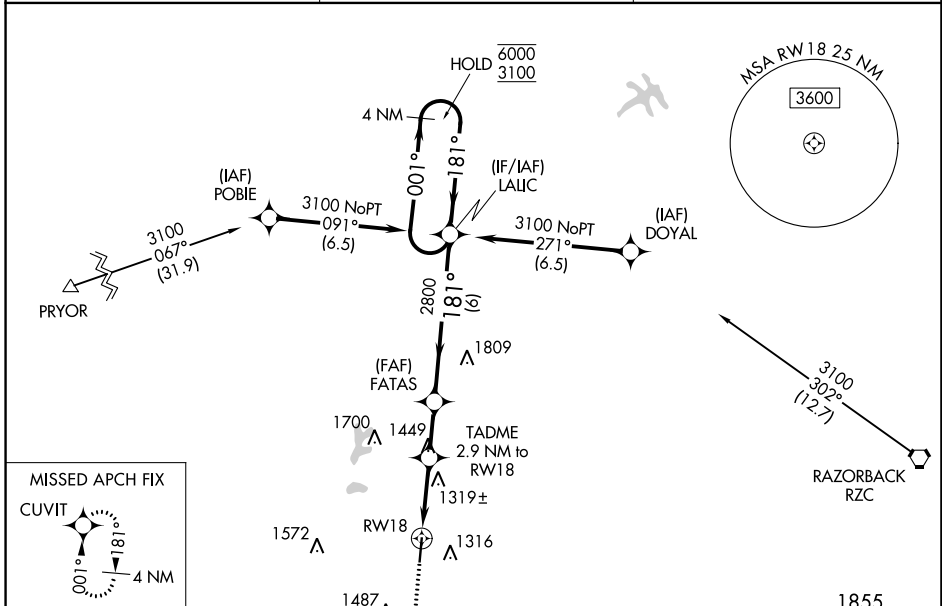
▽ Rwy 18 helicopter visibility reduction below 3/4 SM NA.
▲ For uncompensated Baro-VNAV systems, LNAV/VNAV NA below -17°C or above 54°C.

MISSED APPROACH:
 Climb to 3200 direct
 CUVIT and hold.

AWOS-3PT
118.375

RAZORBACK APP CON ★
121.0 244.575

UNICOM
122.8 (CTAF) 0



CATEGORY	A	B	C	D
LPV DA		1513-1	322 (400-1)	
LNAV/VNAV DA		1598-1½	407 (500-1½)	
LNAV MDA	1580-1	389 (400-1)	1580-1½	389 (400-1½)
C CIRCLING	1620-1 429 (500-1)	1720-1 529 (600-1)	1800-1¾ 609 (700-1¾)	1880-2¼ 689 (700-2¼)

REIL Rws 18 and 36 0
 MRL Rwy 18-36 0

SC-1, 22 FEB 2024 to 21 MAR 2024

SC-1, 22 FEB 2024 to 21 MAR 2024