

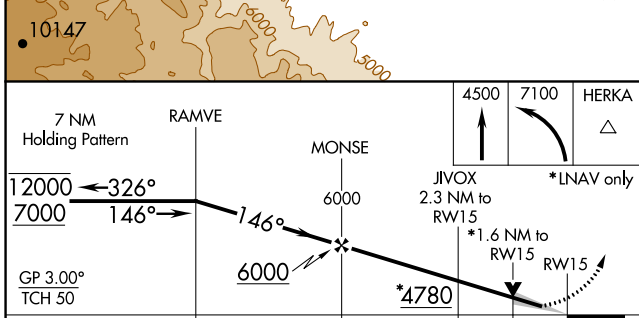
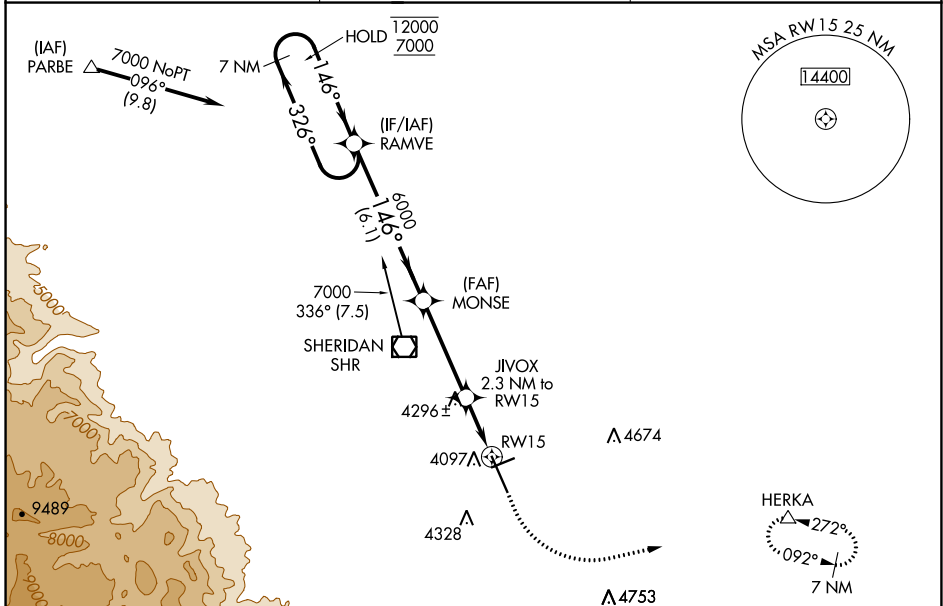
WAAS CH 81899 W15A	APP CRS 146°	Rwy Idg 8301 TDZE 4014 Apt Elev 4021
--	------------------------	---

RNAV (GPS) RWY 15

SHERIDAN COUNTY (SHR)

RNP APCH.	MISSED APPROACH: Climb to 4500 then climbing left turn to 7100 direct HERKA and hold, continue climb-in-hold to 7100.
<p>V Circling to Rwy 24 NA at night. For uncompensated Baro-VNAV systems, LNAV/VNAV NA below -26°C or above 51°C. When local altimeter setting not received, procedure NA.</p> <p>A</p> <p>-19°C</p>	

ASOS 135.175	SALT LAKE CENTER 127.75 351.9	UNICOM 123.0 (CTAF) L
------------------------	---	--



ELEV 4021	D TDZE 4014
<p>HIRL Rwy 15-33 L</p> <p>MIRL Rwy 6-24 L</p> <p>REIL Rws 6, 15, and 24 L</p>	

CATEGORY	A	B	C	D
LPV DA		4264-3/4	250 (300-3/4)	
LNAV/VNAV DA		4292-7/8	278 (300-7/8)	
LNAV MDA	4560-1	546 (600-1)	4560-1 5/8	546 (600-1 5/8)
C CIRCLING	4600-1 579 (600-1)	4640-1 619 (700-1)	4860-2 1/2 839 (900-2 1/2)	5220-3 1199 (1200-3)

NW-1, 22 FEB 2024 to 21 MAR 2024

NW-1, 22 FEB 2024 to 21 MAR 2024