

REDSTONE SIX ARRIVAL

LOUISVILLE, KENTUCKY

LOUISVILLE APP CON
 132.075 327.0
 LOU ATIS
 124.15
 SDF D-ATIS
 118.725

ROSEWOOD
 117.5 ROD
 Chan 122

CINCINNATI
 117.3 CVG
 Chan 120

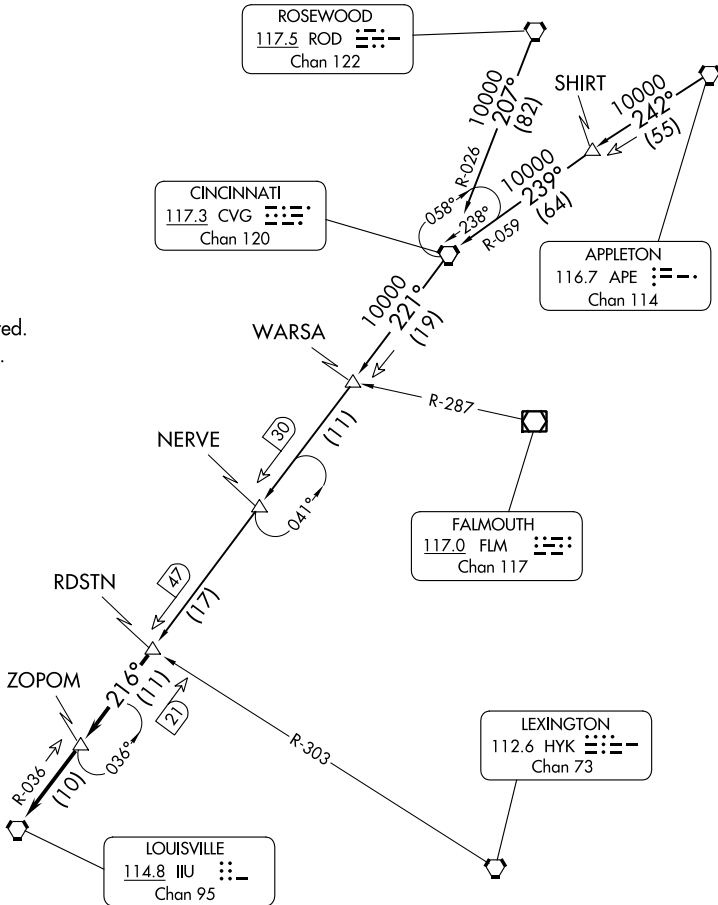
APPLETON
 116.7 APE
 Chan 114

FALMOUTH
 117.0 FLM
 Chan 117

LEXINGTON
 112.6 HYK
 Chan 73

LOUISVILLE
 114.8 IIU
 Chan 95

NOTE: RADAR required.
 NOTE: DME required.



NOTE: Chart not to scale.

ARRIVAL ROUTE DESCRIPTION

APPLETON TRANSITION (APE.RDSTN6): From over APE VORTAC via APE R-242 and CVG R-059 to CVG VORTAC, then via CVG R-221 to RDSTN. Thence....

CINCINNATI TRANSITION (CVG.RDSTN6): From over CVG VORTAC via CVG R-221 to RDSTN. Thence....

ROSEWOOD TRANSITION (ROD.RDSTN6): From over ROD VORTAC via ROD R-207 and CVG R-026 to CVG VORTAC, then via CVG R-221 to RDSTN. Thence....

....from over RDSTN on IIU R-036 to ZOPOM, then on IIU R-036 to IIU VORTAC.
 Expect radar vectors to final approach after ZOPOM.

REDSTONE SIX ARRIVAL

LOUISVILLE, KENTUCKY