

WAAS CH 70604 W07A	APP CRS 069°	Rwy Idg TDZE Apt Elev	5100 1318 1318
--	------------------------	-----------------------------	---

RNAV (GPS) RWY 7

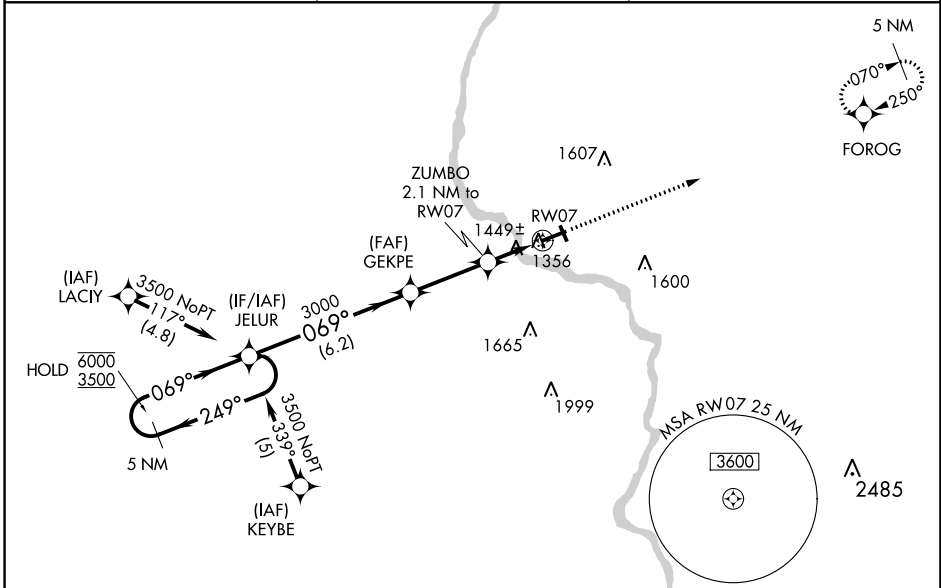
MERRILL MUNI (R.R.L)

RNP APCH - GPS.

▼ Circling Rwy 16, 34 NA at night. Rwy 7 helicopter visibility reduction below ¾ SM NA.
▲ For uncompensated Baro-VNAV systems, LNAV/VNAV NA below -17°C or above 54°C.

MISSED APPROACH:
Climb to 3500 direct FOROG and hold.

AWOS-3 119.925	MINNEAPOLIS CENTER 124.4 317.7	UNICOM 122.8 (CTAF) 0
--------------------------	--	---------------------------------



EC-3, 22 FEB 2024 to 21 MAR 2024

EC-3, 22 FEB 2024 to 21 MAR 2024

5 NM Holding Pattern		VGSI and RNAV glidepath not coincident (VGSI Angle 3.00/TCH 40).		3500	FOROG
		JELUR	GEKPE	ZUMBO	RW07
GP 3.00° TCH 40		3000	2020	1.1 NM to RW07	RW07
		6.2 NM	3 NM	1 NM	1.1 NM
CATEGORY	A	B	C	D	
LPV DA	1635-1	317 (400-1)		NA	
LNAV/VNAV DA	1754-1¼	436 (500-1¼)		NA	
LNAV MDA	1700-1	382 (400-1)	1700-1⅛ 382 (400-1⅛)	NA	
C CIRCLING	1760-1 442 (500-1)	1780-1 462 (500-1)	1920-1¾ 602 (700-1¾)	NA	
					REIL Rwy 7 and 25 0 MIRL Rwy 16-34 and 7-25 0