

WAAS CH 40300 W33A	APP CRS 330°	Rwy Idg TDZE Apt Elev	4578 15 19
--	------------------------	-----------------------------	---------------------------------------

RNAV (GPS) RWY 33

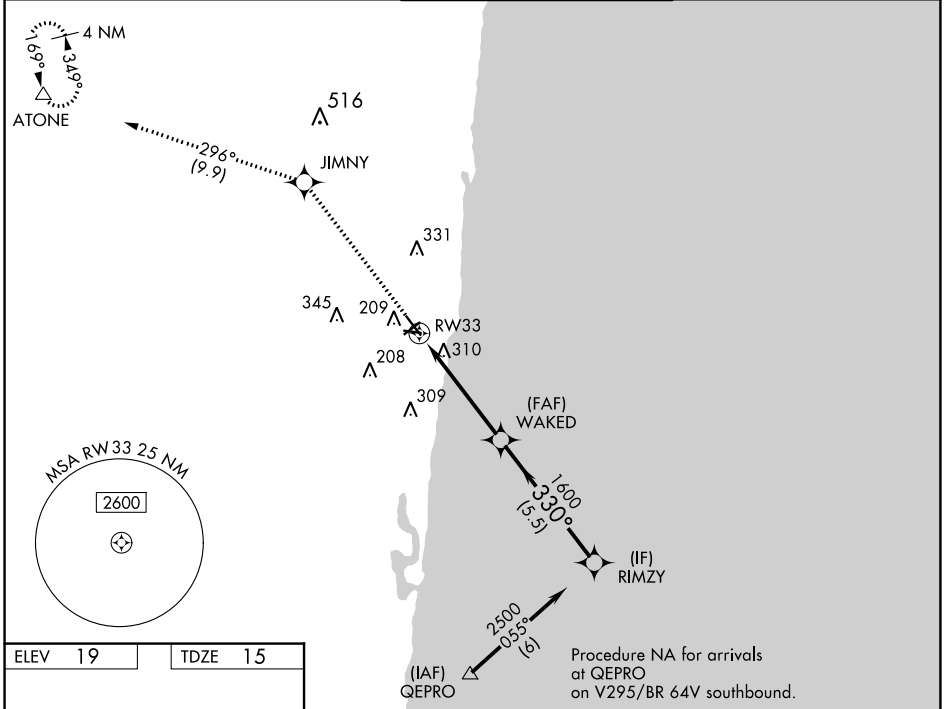
POMPANO BEACH AIRPARK (PMP)

RNP APCH.

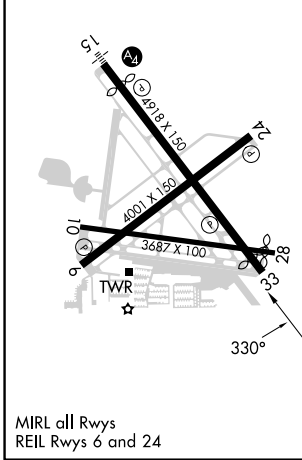
▼ Circling Rwy 15 NA at night. Rwy 33 helicopter visibility reduction below 3/4 SM NA.
▲ For uncompensated Baro-VNAV systems, LNAV/VNAV NA below 0°C or above 54°C.
 When local altimeter setting not received, use Fort Lauderdale Exec altimeter setting.

MISSED APPROACH: Climb to 2100 direct JIMNY and on track 296° to ATONE and hold.

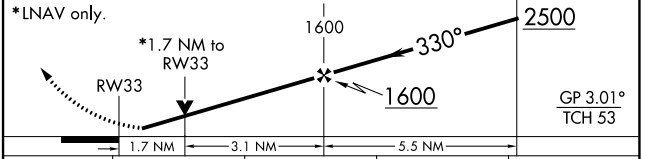
ATIS 120.55	MIAMI APP CON 119.7 306.3	POMPANO BEACH TOWER * 125.4 (CTAF) 0	GND CON 121.9	UNICOM 122.95
-----------------------	-------------------------------------	--	-------------------------	-------------------------



ELEV 19	TDZE 15
---------	---------



2100	JIMNY	tr 296°	ATONE	RIMZY
------	-------	---------	-------	-------



CATEGORY	A	B	C	D
LPV DA	265-3/4	250 (300-3/4)		NA
LNAV/VNAV DA	700-2 1/2	685 (700-2 1/2)		NA
LNAV MDA	620-1	605 (700-1)		NA
C CIRCLING	660-1	641 (700-1)		NA

SE-3, 22 FEB 2024 to 21 MAR 2024

SE-3, 22 FEB 2024 to 21 MAR 2024