

(CUTTA..JESEY4) 19339

AL-570 (FAA)

PITTSBURGH INTL (PIT)  
PITTSBURGH, PENNSYLVANIA

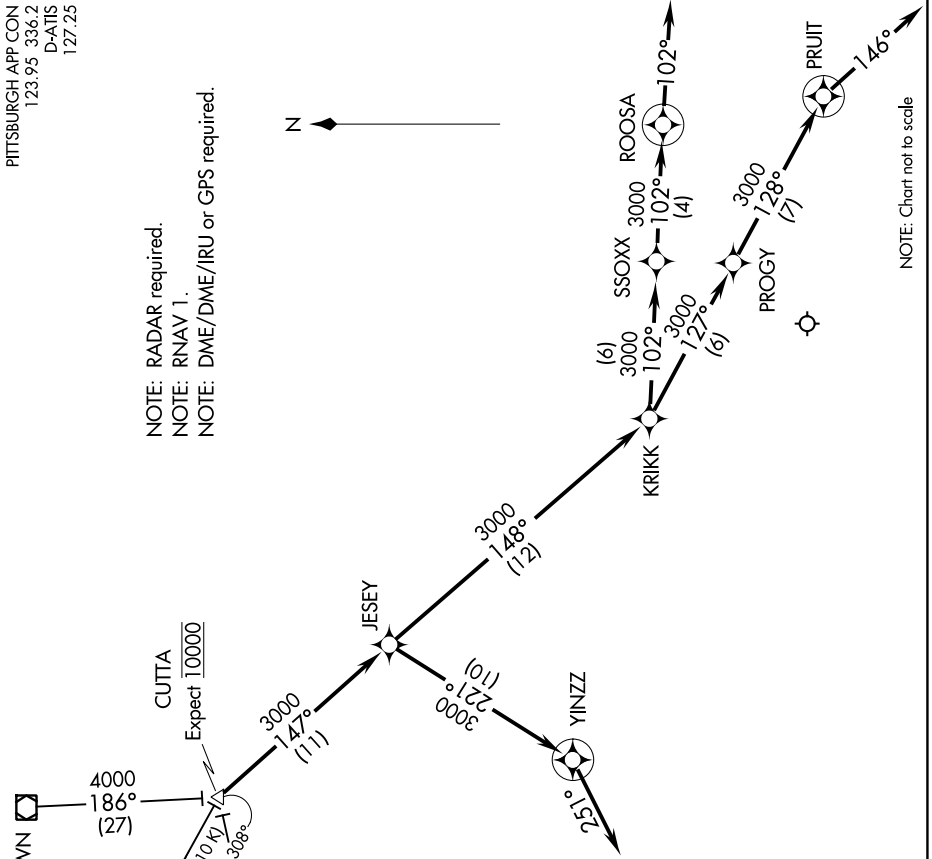
# JESEY FOUR ARRIVAL (RNAV)

PITTSBURGH APP CON  
123.95 336.2  
D-ATIS  
127.25

NOTE: RADAR required.  
NOTE: RNAV 1.  
NOTE: DME/DME/IRU or GPS required.



NE-4, 22 FEB 2024 to 21 MAR 2024



NOTE: BRIGGS Transition  
ATC assigned only.

### ARRIVAL ROUTE DESCRIPTION

AKRON TRANSITION (ACO..JESEY4)  
BRIGGS TRANSITION (BSV..JESEY4)  
YOUNGSTOWN TRANSITION (YNG..JESEY4)

From CUTTA on track 147° to JESEY, thence on assigned runway transition.

LANDING RWY 10L/10C/10R: From JESEY on track 221° to YINZZ, then on heading 251°. Expect radar vectors to final approach course.

LANDING RWY 28L/28C/28R: From JESEY on track 148° to KRIKK, then on track 102° to SSOXX, then on track 102° to ROOSA, then on heading 102°. Expect radar vectors to final approach course.  
LANDING RWY 32: From JESEY on track 148° to KRIKK, then on track 127° to PROGY, then on track 128° to PRUIT, then on heading 146°. Expect radar vectors to final approach course.

NOTE: Chart not to scale

NE-4, 22 FEB 2024 to 21 MAR 2024

# JESEY FOUR ARRIVAL (RNAV)

(CUTTA..JESEY4) 05DEC19

PITTSBURGH, PENNSYLVANIA  
PITTSBURGH INTL (PIT)