

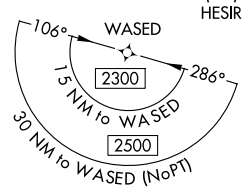
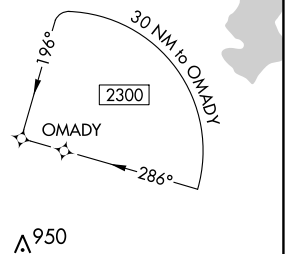
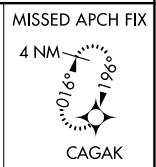
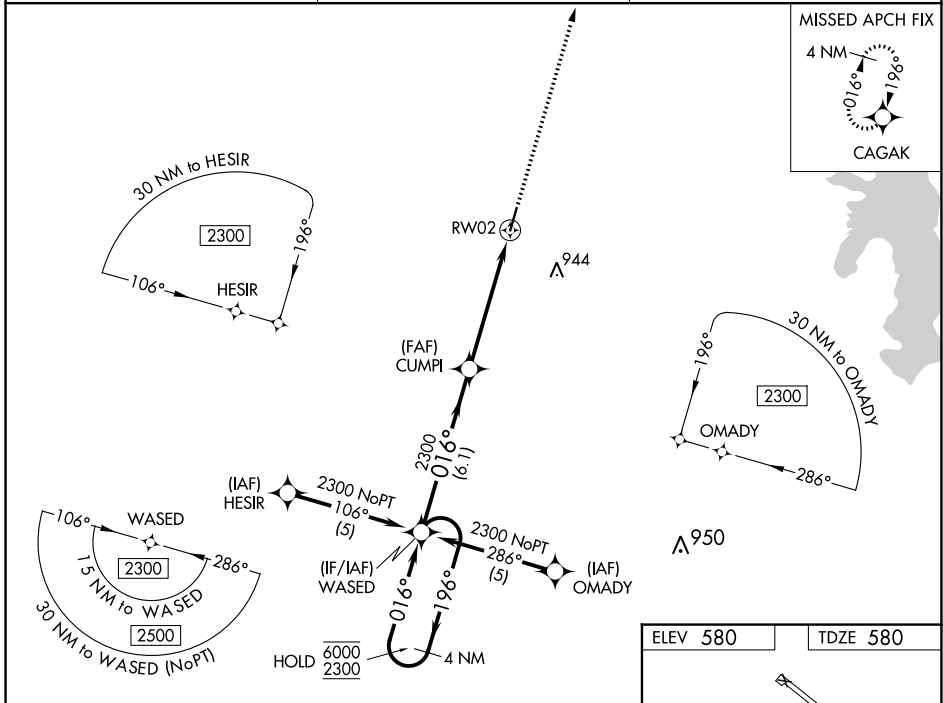
WAAS CH <b>48817</b> <b>W02A</b>	APP CRS <b>016°</b>	Rwy Idg TDZE Apt Elev	<b>5001</b> <b>580</b> <b>580</b>
--	------------------------	-----------------------------	---

# RNAV (GPS) RWY 2

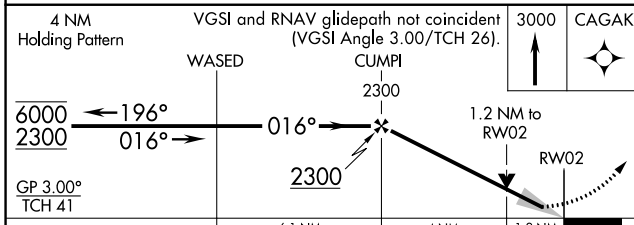
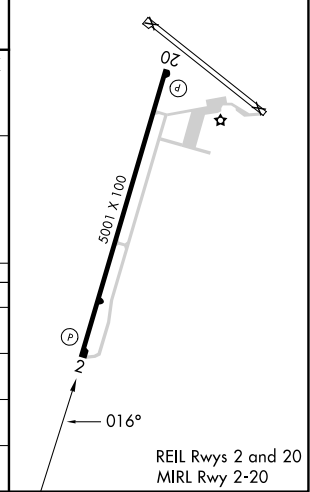
HENRY COUNTY (PHT)

RNP APCH - GPS.	MISSED APPROACH: Climb to 3000 direct CAGAK and hold.
<p>For uncompensated Baro-VNAV systems, LNAV/VNAV NA below -16°C or above 54°C.</p>	

AWOS-3 <b>118.825</b>	MEMPHIS CENTER <b>134.65 316.15</b>	UNICOM <b>123.0 (CTAF)</b>
--------------------------	--	-------------------------------



ELEV 580	TDZE 580
----------	----------



CATEGORY	A	B	C	D
LPV DA		780-3/4	200 (200-3/4)	
LNAV/VNAV DA		1087-13/8	507 (600-13/8)	
LNAV MDA	1020-1	440 (500-1)	1020-1 1/4	440 (500-1 1/4)
CIRCLING	1080-1	500 (500-1)	1300-2 720 (800-2)	1300-2 1/4 720 (800-2 1/4)

SE-1, 22 FEB 2024 to 21 MAR 2024

SE-1, 22 FEB 2024 to 21 MAR 2024