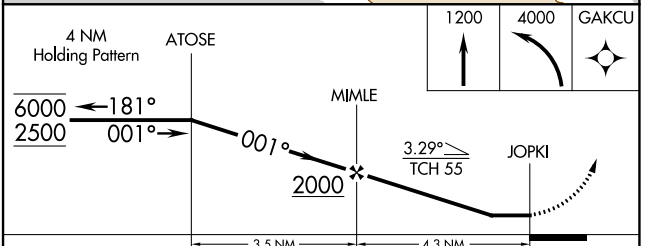
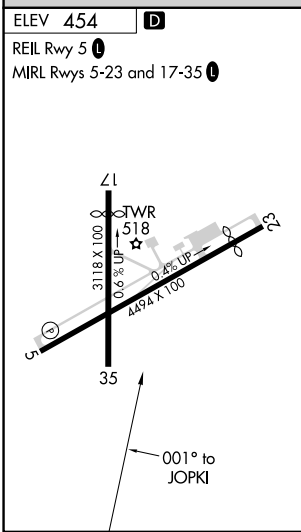
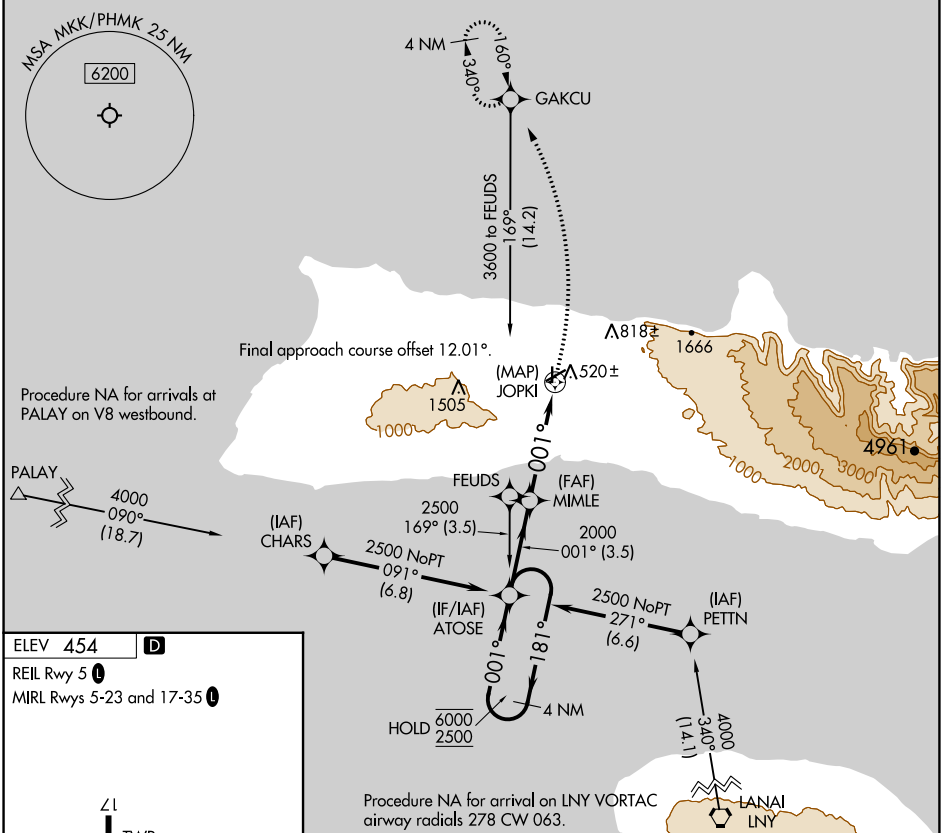


APP CRS	Rwy Idg	N/A
001°	TDZE	N/A
	Apt Elev	454

RNAV (GPS)-B

MOLOKAI (MKK)(PHMK)

RNP APCH.		MISSED APPROACH: Climb to 1200 then climbing left turn 4000 direct GAKCU and hold, continue climb-in-hold to 4000.	
<p>▼ Circling to Rwy 17, 23 NA at night.</p> <p>▲ Circling NA east of Rwy 35 and southeast of Rwy 23.</p>			
ATIS	HCF CENTER	MOLOKAI TOWER ★	GND CON
128.2	124.1 317.5	125.7 (CTAF) 0 306.2	121.9



CATEGORY	A	B	C	D
C CIRCLING	980-1 526 (600-1)	1100-1 646 (700-1)	1640-3 1186 (1200-3)	1920-3 1466 (1500-3)

PAC, 25 JAN 2024 to 21 MAR 2024

PAC, 25 JAN 2024 to 21 MAR 2024

VORTAC MKK 116.1 Chan 108	APP CRS 066°	Rwy Idg TDZE Apt Elev 454	N/A N/A 454
---	------------------------	-------------------------------------	--------------------------

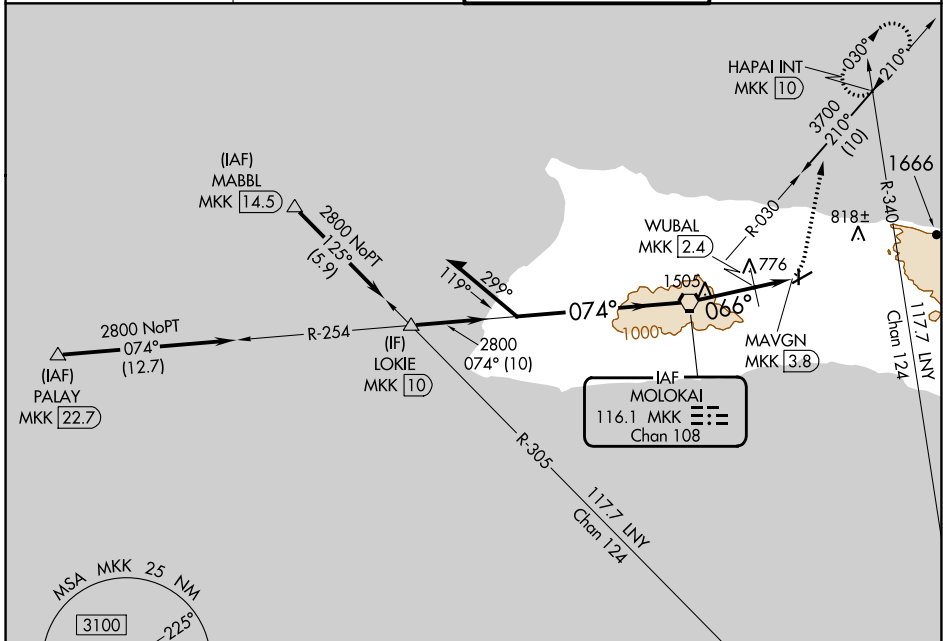
VOR or TACAN-A

MOLOKAI (MKK) (PHMK)

⚠ Circling Rwy 17, 23 NA at night.

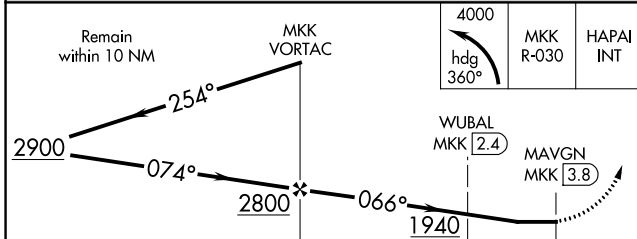
MISSED APPROACH: Climbing left turn to 4000 on heading 360° and on MKK VORTAC R-030 to HAPAI INT/MKK 10 DME and hold, continue climb-in-hold to 4000.

ATIS 128.2	HCF CENTER 124.1 317.5	MOLOKAI TOWER* 125.7 (CTAF) 0 306.2	GND CON 121.9
----------------------	----------------------------------	---	-------------------------

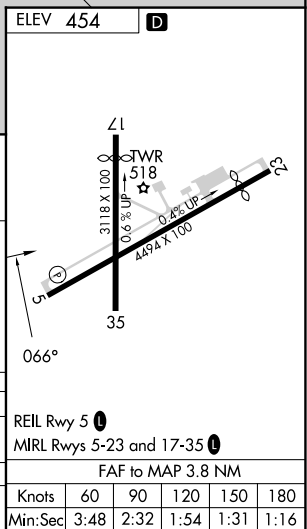


PAC, 25 JAN 2024 to 21 MAR 2024

PAC, 25 JAN 2024 to 21 MAR 2024



CATEGORY	A	B	C	D
C CIRCLING	1940-1¼ 1486 (1500-1¼)	1940-1½ 1486 (1500-1½)	1940-3	1486 (1500-3)
WUBAL FIX MINIMUMS (DME REQUIRED)				
C CIRCLING	1400-1¼ 946 (1000-1¼)		1680-3 1226 (1300-3)	1940-3 1486 (1500-3)



REIL Rwy 5				
MIRL Rlys 5-23 and 17-35				
FAF to MAP 3.8 NM				
Knots	60	90	120	150
Min:Sec	3:48	2:32	1:54	1:31