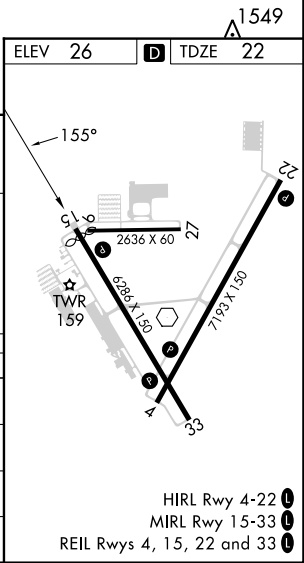
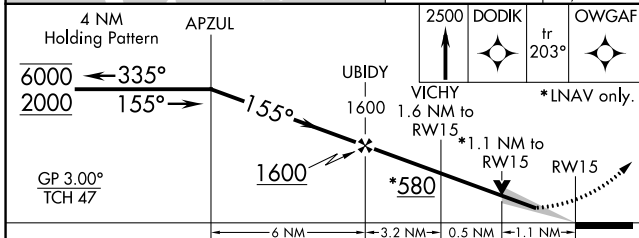
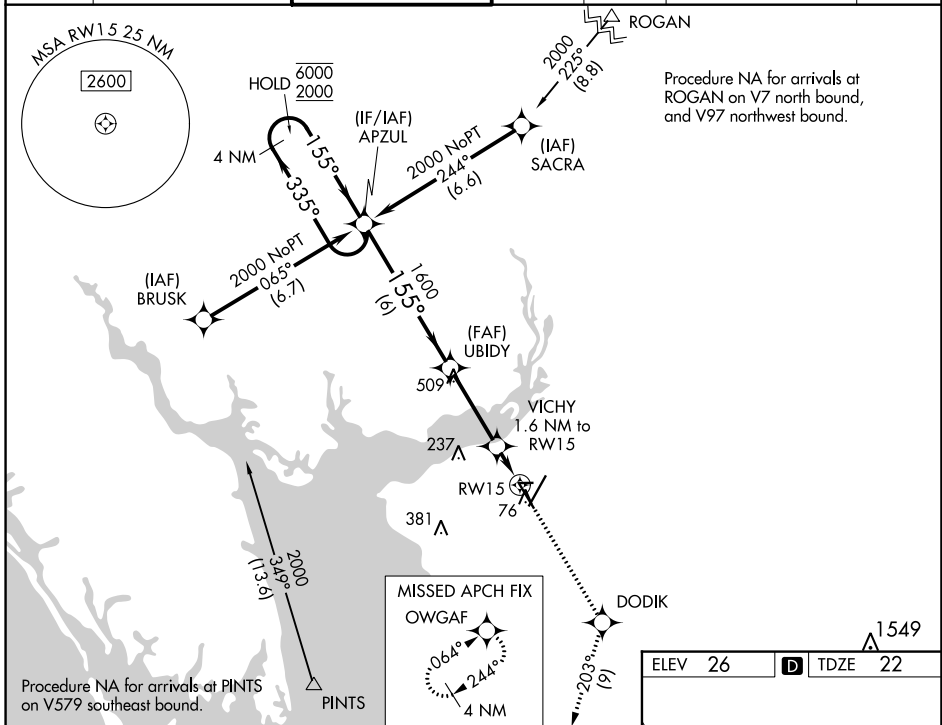


WAAS CH <b>86307</b> <b>W15A</b>	APP CRS <b>155°</b>	Rwy Idg TDZE Apt Elev	<b>6015</b> <b>22</b> <b>26</b>
--	------------------------	-----------------------------	---------------------------------------

# RNAV (GPS) RWY 15

PUNTA GORDA (PGD)

RNP APCH.				MISSED APPROACH: Climb to 2500 direct DODIK and track 203° to OWGAF and hold.			
For uncompensated Baro-VNAV systems, LNAV/VNAV NA below 2°C or above 54°C.							
ATIS ★ <b>135.675</b>	FORT MYERS APP CON ★ <b>127.05 306.2</b>	PUNTA GORDA TOWER ★ <b>121.0 (CTAF) 0</b>	GND CON <b>119.55</b>	CLNC DEL <b>119.55</b>	CLNC DEL <b>127.05</b> (When twr closed)	UNICOM <b>122.975</b>	



CATEGORY	A	B	C	D
LPV DA		272-¾	250 (300-¾)	
LNAV/VNAV DA		320-7/8	298 (300-7/8)	
LNAV MDA	420-1	398 (400-1)	420-1½	398 (400-1½)
CIRCLING	460-1 434 (500-1)	580-1 554 (600-1)	600-1½ 574 (600-1½)	740-2¼ 714 (800-2¼)

SE-3, 22 FEB 2024 to 21 MAR 2024

SE-3, 22 FEB 2024 to 21 MAR 2024