

WAAS CH 50539 W22A	APP CRS 221°	Rwy Idg TDZE 447 Apt Elev 447	5000
--	------------------------	---	-------------

RNAV (GPS) RWY 22

FORT YUKON (FYU) (PFYU)

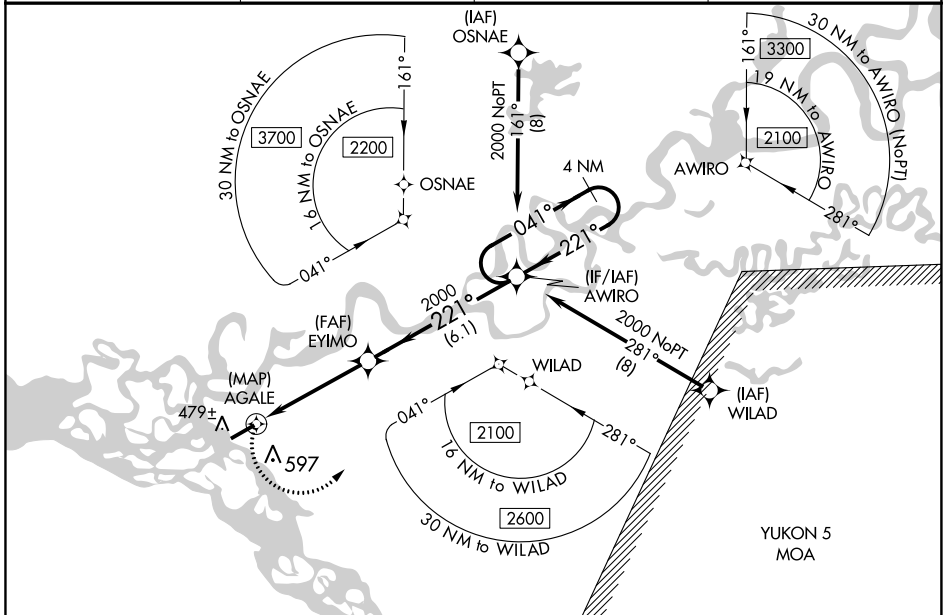
▼ Inop table does not apply to LPV or LNAV/VNAV all Cats. For uncompensated Baro-VNAV systems, LNAV/VNAV NA below -20°C (-4°F) or above 54°C (130°F). Circling NA southeast of Rwy 4 and 22. DME/DME RNP-0.3 NA. Rwy 22 helicopter visibility reduction below 3/4 SM NA. For inop ALS, increase LNAV Cat C and D visibility 1/8 SM

MALSF



MISSED APPROACH:
Climbing left turn to
2000 direct AWIRO
and hold.

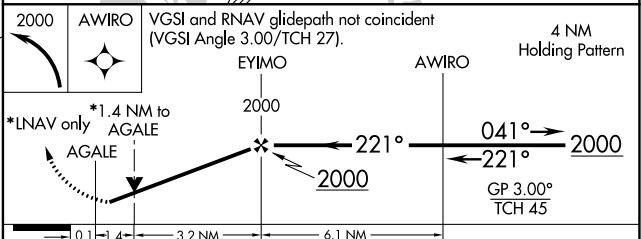
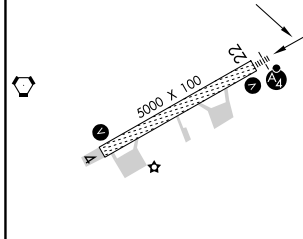
AWOS-3P 125.8	ANCHORAGE CENTER 135.0 225.4	FAIRBANKS RADIO 122.05	CTAF 122.5
-------------------------	--	----------------------------------	----------------------



AK, 25 JAN 2024 to 21 MAR 2024

AK, 25 JAN 2024 to 21 MAR 2024

ELEV 447	TDZE 447
-----------------	-----------------



CATEGORY	A	B	C	D
LPV DA		697-1	250 (300-1)	
LNAV/VNAV DA		716-1	269 (300-1)	
LNAV MDA	960-1	513 (600-1)	960-1 1/4	513 (600 1 1/4)
C CIRCLING	960-1	513 (600-1)	960-1 1/2 513 (600-1 1/2)	1000-2 553 (600-2)

WAAS CH 72939 W04A	APP CRS 040°	Rwy Idg TDZE 447 Apt Elev 447	5000
--	------------------------	---	-------------

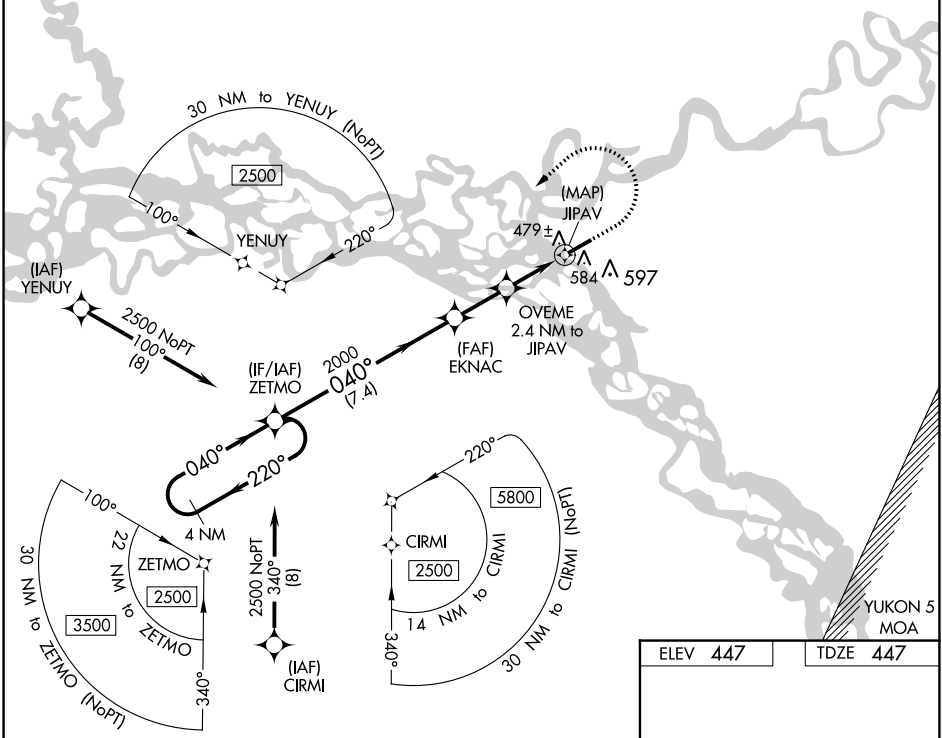
RNAV (GPS) RWY 4

FORT YUKON (FYU) (PFYU)

▼ For uncompensated Baro-VNAV systems, LNAV/VNAV NA below -20° C (-4°F) or above 54°C (130°F). Circling NA southeast of Rwy 4-22. DME/DME RNP-0.3 NA. Rwy 4 helicopter visibility reduction below $\frac{3}{4}$ SM NA.

MISSED APPROACH: Climb to 1000 then climbing left turn to 2500 direct ZETMO and hold.

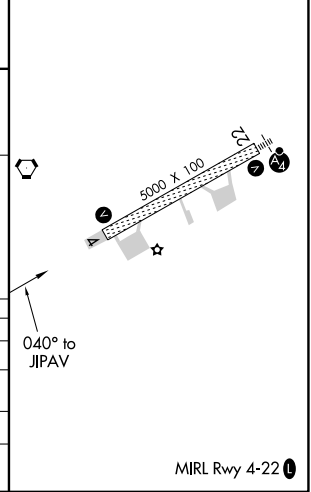
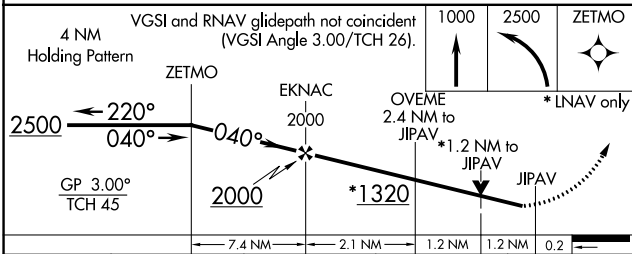
AWOS-3P 125.8	ANCHORAGE CENTER 135.0 225.4	FAIRBANKS RADIO 122.05	CTAF 122.5
-------------------------	--	----------------------------------	----------------------



AK, 25 JAN 2024 to 21 MAR 2024

AK, 25 JAN 2024 to 21 MAR 2024

ELEV 447	TDZE 447
-----------------	-----------------



CATEGORY	A	B	C	D
LPV DA		697-1	250 (300-1)	
LNAV/VNAV DA		764-1	317 (400-1)	
LNAV MDA	860-1	413 (500-1)	860-1 $\frac{1}{8}$	413 (500-1 $\frac{1}{8}$)
C CIRCLING	860-1 413 (500-1)	900-1 453 (500-1)	900-1 $\frac{1}{2}$ 453 (500-1 $\frac{1}{2}$)	1000-2 553 (600-2)

VORTAC FYU 114.4 Chan 91	APP CRS 236°	Rwy Idg 5000 TDZE 447 Apt Elev 447
--	------------------------	---

VOR/DME or TACAN RWY 22

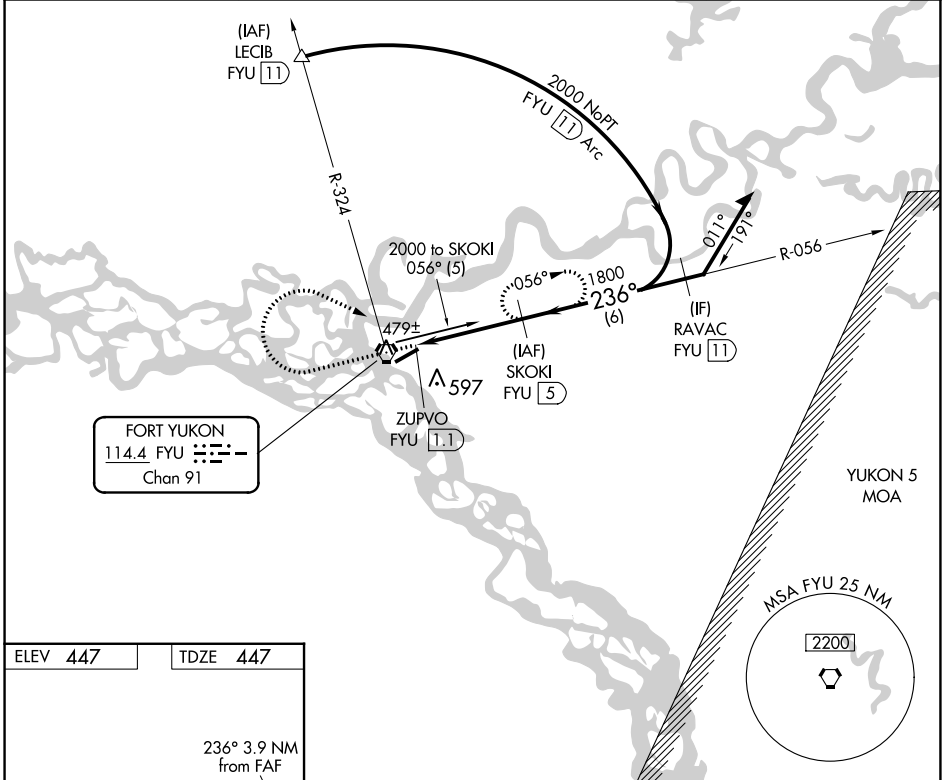
FORT YUKON (FYU) (PFYU)

▼ Inop table does not apply. Circling NA southeast of Rwy 4-22. Rwy 22 Straight-In and Circling minimums NA at night. Helicopter visibility reduction below 1 SM NA.

MALSF

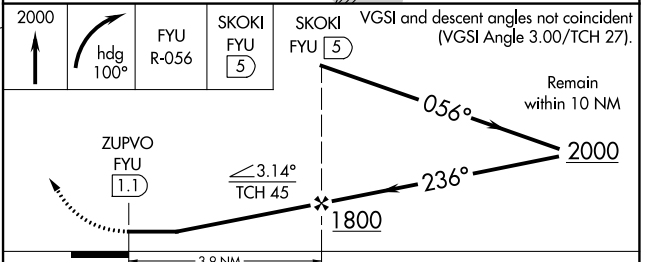
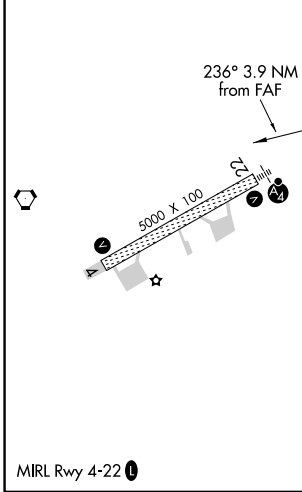
MISSED APPROACH: Climb to 2000 then right turn on heading 100° and FYU VORTAC R-056 to SKOKI/5 DME and hold.

AWOS-3P 125.8	ANCHORAGE CENTER 135.0 225.4	FAIRBANKS RADIO 122.05	CTAF 122.5
-------------------------	--	----------------------------------	----------------------



FORT YUKON
114.4 FYU
Chan 91

ELEV 447	TDZE 447
-----------------	-----------------



CATEGORY	A	B	C	D
S-22	960-1	513 (600-1)	960-1 $\frac{3}{8}$	513 (600-1 $\frac{3}{8}$)
CIRCLING	960-1	513 (600-1)	960-1 $\frac{1}{2}$	1000-2
			513 (600-1 $\frac{1}{2}$)	553 (600-2)

AK, 25 JAN 2024 to 21 MAR 2024

AK, 25 JAN 2024 to 21 MAR 2024