

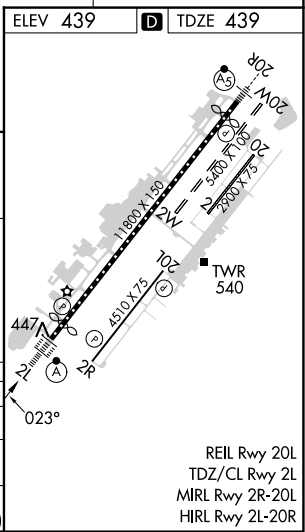
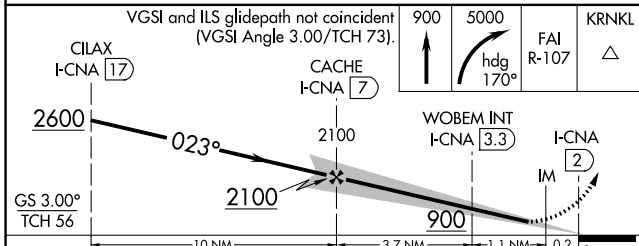
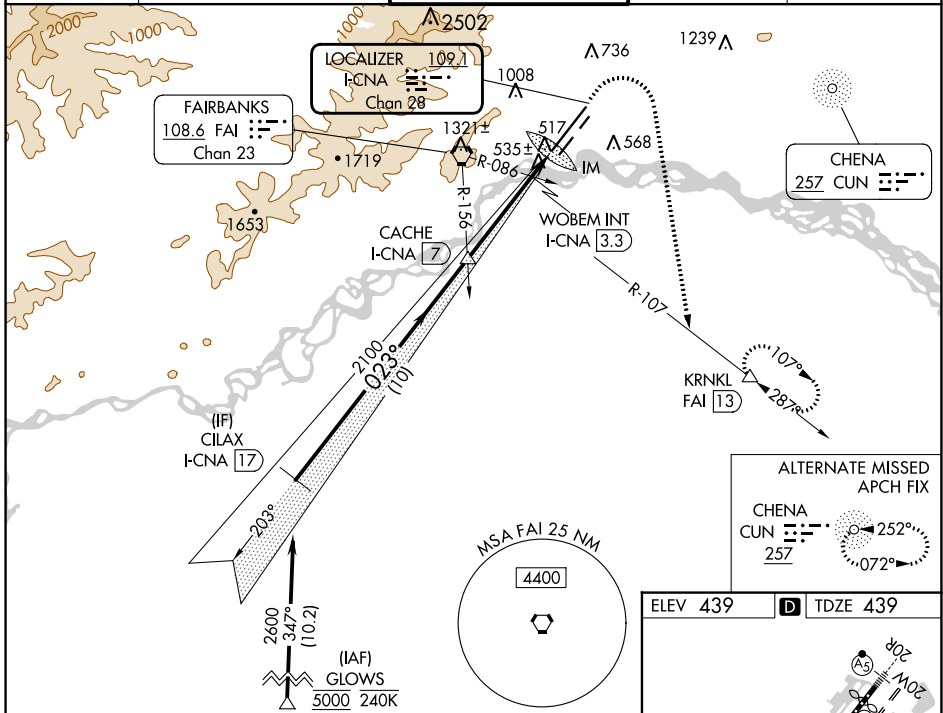
LOC/DME I-CNA	APP CRS	Rwy Idg	11050
109.1	023°	TDZE	439
Chan 28		Apt Elev	439

ILS or LOC RWY 2L

FAIRBANKS INTL (FAI) (PAFA)

RNP APCH - GPS. DME required.	ALSIF-2 	MISSED APPROACH: Climb to 900 then climbing right turn to 5000 on heading 170° and FAI VORTAC R-107 to KRNL/FAI 13 DME and hold, continue climb-in-hold to 5000.
Circling NA west of Rwy 2L-20R. Circling NA to Rwsy 2W and 20W. For inop ALS, increase S-ILS 2L Cat E visibility to RVR 4000 and S-LOC 2L Cat C/D/E visibility to RVR 5500.		

ATIS 124.4	FAIRBANKS APP CON 125.35 363.2	FAIRBANKS TOWER 118.3 257.8	GND CON 121.9	CLNC DEL 127.6
----------------------	--	---------------------------------------	-------------------------	--------------------------



CATEGORY	A	B	C	D	E
S-ILS 2L	639/18 200 (200-½)				
S-LOC 2L	800/24	361 (400-½)	800/35 361 (400-¾)		
CIRCLING	880-1 441 (500-1)	900-1 461 (500-1)	900-1½ 461 (500-1½)	1020-2 581 (600-2)	1060-2¼ 621 (700-2¼)

AK, 25 JAN 2024 to 21 MAR 2024

AK, 25 JAN 2024 to 21 MAR 2024

LOC/DME I-FAI 110.3 Chan 40	APP CRS 203°	Rwy Idg 11050 TDZE 439 Apt Elev 439
--	------------------------	--

ILS Z or LOC Z RWY 20R

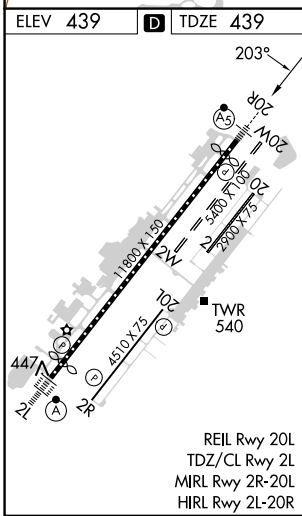
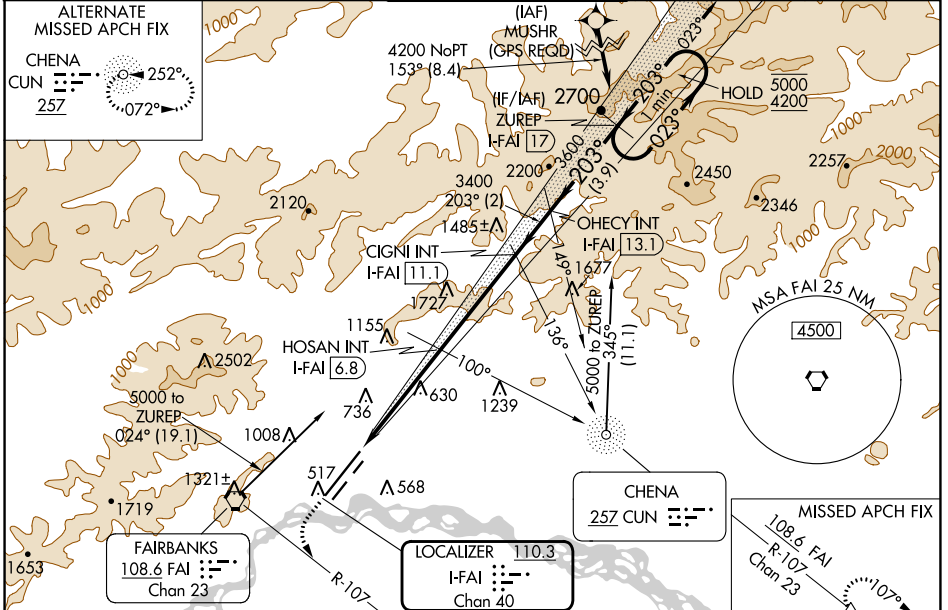
FAIRBANKS INTL (FAI) (PAFA)

DME required. DME required for procedure entry.

MALS R MISSED APPROACH: Climb to 1100 then climbing left turn to 3000 on FAI VORTAC R-107 to KRNKL/FAI VORTAC 13 DME and hold.

Circling NA west of Rwy 2L-20R. Circling NA to Rwy 2W and 20W. For inop ALS increase S-ILS 20R Cat E visibility to RVR 4000, increase S-LOC 20R Cat E visibility to 1 1/2 SM. #RVR 1800 authorized with use of FD or AP or HUD to DA.

ATIS 124.4	FAIRBANKS APP CON 125.35 363.2	FAIRBANKS TOWER 118.3 257.8	GND CON 121.9	CLNC DEL 127.6
----------------------	--	---------------------------------------	-------------------------	--------------------------



ELEV 439	D	TDZE 439			
1100	3000	KRNKL	VGSI and ILS glidepath not coincident (VGSI Angle 3.00/TCH 74).		
↑	FAI R-107	△			
Use I-FAI DME when on the localizer course.		OHECY INT I-FAI 13.1	ZUREP I-FAI 17		
		CIGNI INT I-FAI 11.1			
		HOSAN INT I-FAI 6.8			
		I-FAI 3.2			
		I-FAI 2			
		2020*	3400		
		203°	5000		
		203°	4200		
		3600			
		GS 3.00°	TCH 56		
1.2	3.6 NM	4.3 NM	2 NM	3.9 NM	
CATEGORY	A	B	C	D	E
S-ILS 20R#	639/24 200 (200-1/2)				
S-LOC 20R	880/24	441 (500-1/2)	880/45	441 (500-7/8)	
CIRCLING	880-1 441 (500-1)	900-1 461 (500-1)	900-1 1/2 461 (500-1 1/2)	1020-2 581 (600-2)	1060-2 1/4 621 (700-2 1/4)

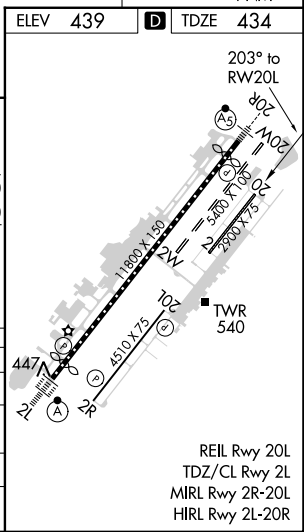
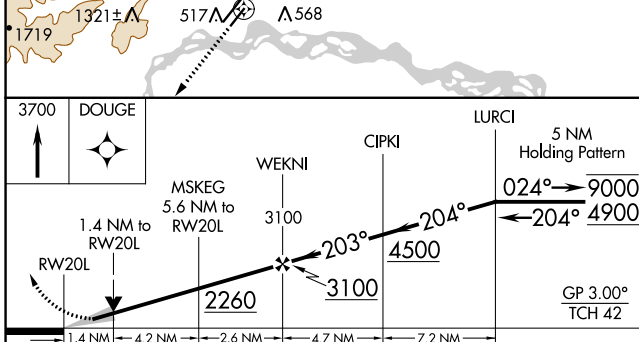
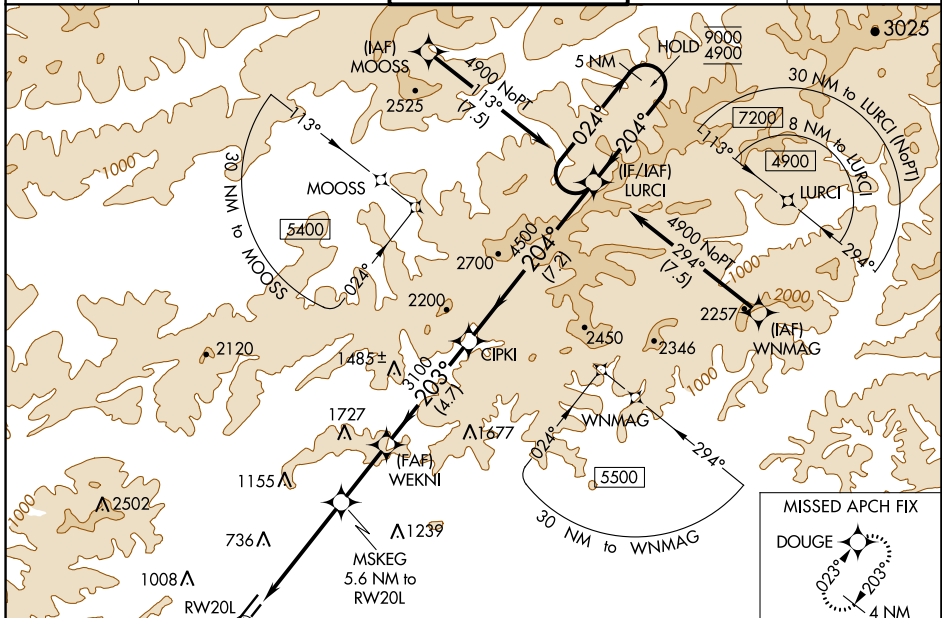
WAAS CH 93812 W20A	APP CRS 203°	Rwy Idg TDZE Apt Elev	4510 434 439
--	------------------------	-----------------------------	---

RNAV (GPS) RWY 20L

FAIRBANKS INTL (FAI) (PAFA)

RNP APCH-GPS.		MISSED APPROACH: Climb to 3700 direct DOUGE and hold, continue climb-in-hold to 3700.	
<p>7 Circling NA west of Rwy 2L-20R. For uncompensated Baro-VNAV systems, LNAV/VNAV NA below -20°C or above 54°C. Circling NA to Rwy 2W/20W and 2/20.</p>			

ATIS 124.4	FAIRBANKS APP CON 125.35 363.2	FAIRBANKS TOWER 118.3 257.8	GND CON 121.9	CLNC DEL 127.6
----------------------	--	---------------------------------------	-------------------------	--------------------------



CATEGORY	A	B	C	D
LPV DA		684- ³ / ₄	250 (300- ³ / ₄)	
LNAV/VNAV DA		701- ⁷ / ₈	267 (300- ⁷ / ₈)	
LNAV MDA	920-1	486 (500-1)	920-1 ³ / ₈	486 (500-1 ³ / ₈)
C CIRCLING	920-1	481 (500-1)	920-1 ¹ / ₂	1000-2 561 (600-2)

AK, 25 JAN 2024 to 21 MAR 2024

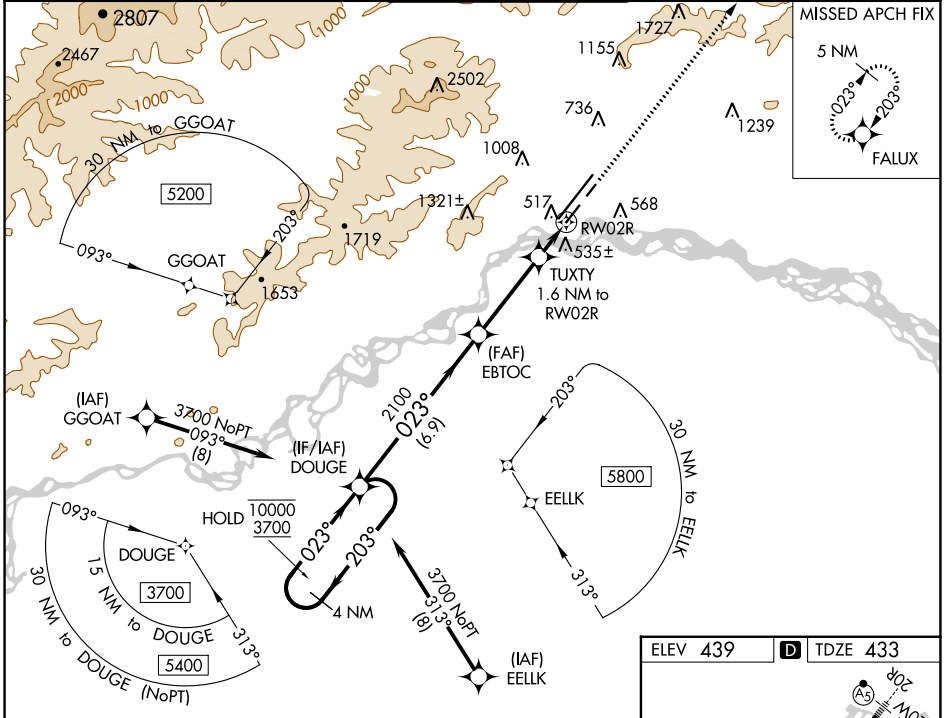
AK, 25 JAN 2024 to 21 MAR 2024

WAAS CH 53612 W02A	APP CRS 023°	Rwy Idg 4510 TDZE 433 Apt Elev 439
--	------------------------	---

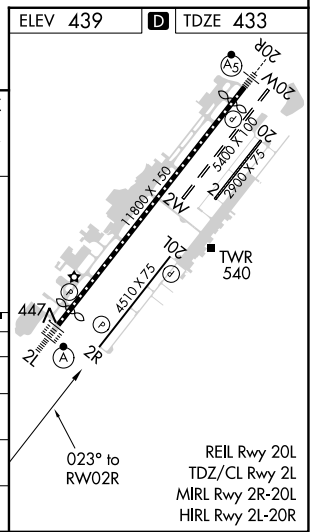
RNAV (GPS) RWY 2R

FAIRBANKS INTL (FAI) (PAFA)

RNP APCH - GPS.		FAIRBANKS TOWER 118.3 257.8		GND CON 121.9	CLNC DEL 127.6
<p>▼ Circling NA west of Rwy 2L-20R. Circling NA to Rws 2W and 20W. ⚠ -32°C Rwy 2R helicopter visibility reduction below ¾ SM NA. For uncompensated Baro-VNAV systems, LNAV/VNAV NA below -21°C or above 54°C.</p>		<p>MISSED APPROACH: Climb to 4900 direct FALUX and hold, continue climb-in-hold to 4900.</p>			



4 NM Holding Pattern		DOUGE		EBTOC		TUXTY 1.6 NM to RWY 2R		4900 FALUX	
10000 ← 203°		3700 → 023°		2100		*980		<p>GP 3.00° TCH 40</p> <p>6.9 NM 3.5 NM 0.6 1 NM</p>	
CATEGORY	A	B	C	D					
LPV DA	683-7/8 250 (300-7/8)								
LNAV/VNAV DA	731-1 298 (300-1)								
LNAV MDA	800-1 367 (400-1)								
C CIRCLING	880-1 441 (500-1)	900-1 461 (500-1)	900-1½ 461 (500-1½)	1020-2 581 (600-2)					



AK, 25 JAN 2024 to 21 MAR 2024

AK, 25 JAN 2024 to 21 MAR 2024

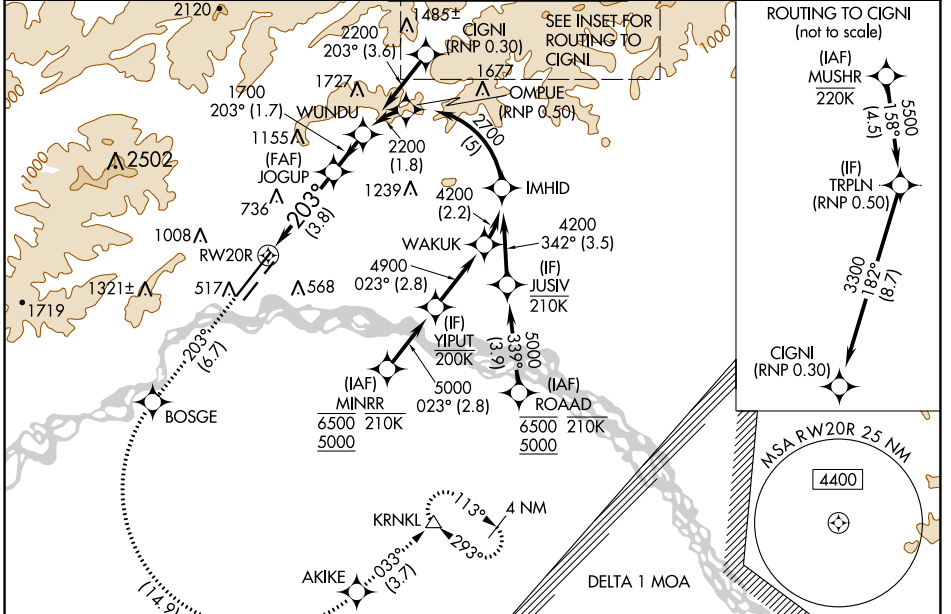
APP CRS	Rwy ldg 11050
203°	TDZE 439
	Apt Elev 439

RNAV (RNP) Z RWY 20R

FAIRBANKS INTL (FAI) (PAFA)

RNP AR APCH - GPS.	MALSR	MISSED APPROACH: Climb to 4000 on track 203° to BOSGE then left turn to AKIKE then on track 033° to KRNLK and hold.
-32°C For uncompensated Baro-VNAV systems, procedure NA below -18°C or above 54°C. For inop ALS, increase RNP 0.30 all Cats visibility to 1 1/2 SM.		

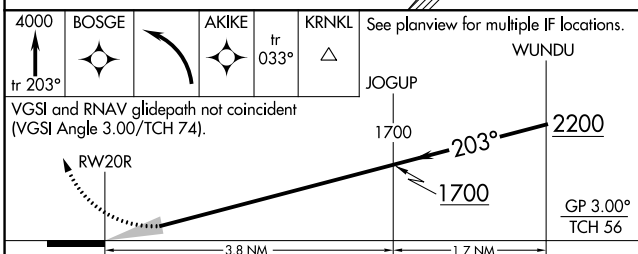
ATIS	FAIRBANKS APP CON	FAIRBANKS TOWER	GND CON	CLNC DEL
124.4	125.35 363.2	118.3 257.8	121.9	127.6



AK, 25 JAN 2024 to 21 MAR 2024

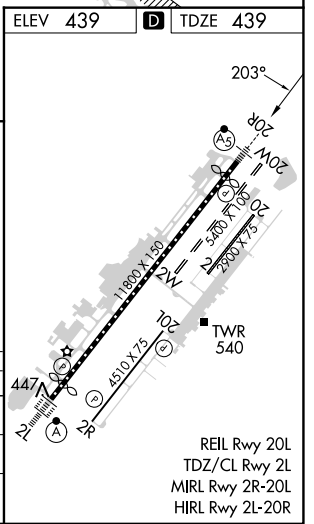
AK, 25 JAN 2024 to 21 MAR 2024

ELEV 439	TDZE 439
----------	----------



CATEGORY	A	B	C	D
RNP 0.10 DA		763/26	324 (400-1/2)	
RNP 0.30 DA		923/50	484 (500-1)	

AUTHORIZATION REQUIRED



REIL Rwy 20L
 TDZ/CL Rwy 2L
 MRL Rwy 2R-20L
 HIRL Rwy 2L-20R

APP CRS	Rwy Idg	11050
023°	TDZE	439
	Apt Elev	439

RNAV (RNP) Z RWY 2L

FAIRBANKS INTL (FAI) (PAFA)

RNP AR APCH - GPS.

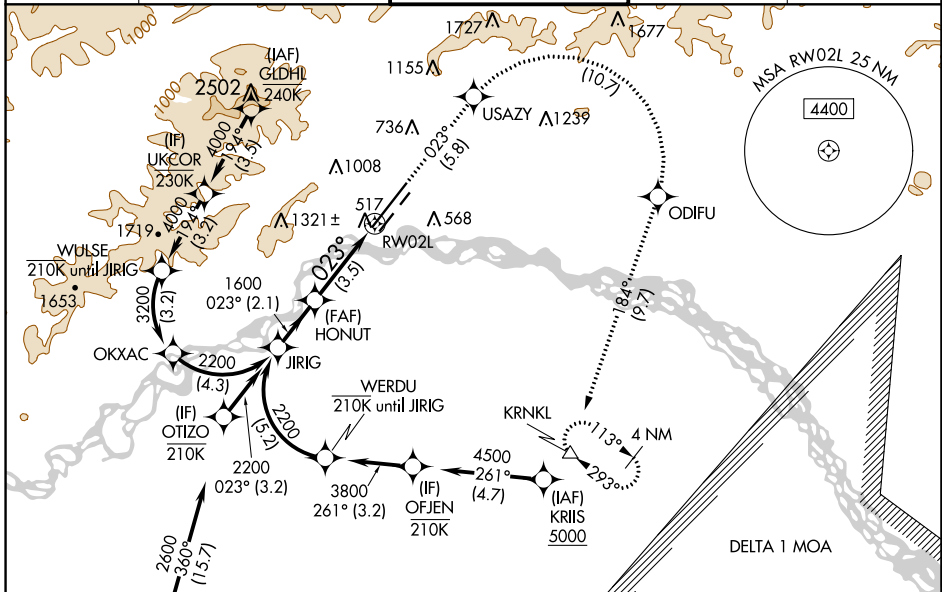
⚠ For uncompensated Baro-VNAV systems, procedure NA below -19°C or above 54°C. For inop ALS, increase RNP 0.10* all Cats visibility to RVR 4500, increase RNP 0.10 all Cats visibility to RVR 5500, and increase RNP 0.30 all Cats visibility to RVR 6000.

ALS-F-2

MISSED APPROACH: Climb to 5000 on track 023° USAZY then right turn to ODIFU and track 184° to KRNL and hold.

*Missed approach requires minimum climb of 222 feet per NM to 2420.

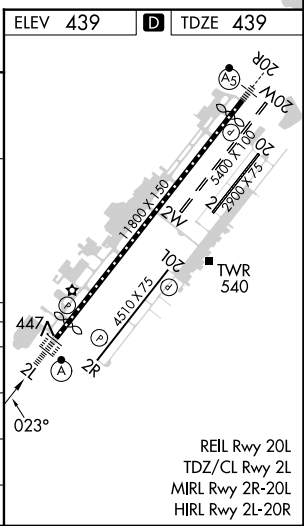
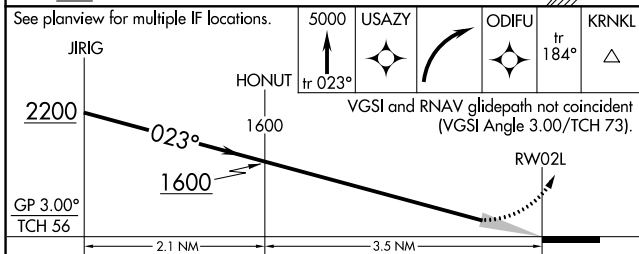
ATIS	FAIRBANKS APP CON	FAIRBANKS TOWER	GND CON	CLNC DEL
124.4	125.35 363.2	118.3 257.8	121.9	127.6



AK, 25 JAN 2024 to 21 MAR 2024

AK, 25 JAN 2024 to 21 MAR 2024

ELEV 439	D TDZE 439
----------	-------------------



CATEGORY	A	B	C	D
RNP 0.10 DA*		755/24	316 (400-½)	
RNP 0.10 DA		805/35	366 (400-¾)	
RNP 0.30 DA		855/40	416 (500-¾)	

AUTHORIZATION REQUIRED

REIL Rwy 20L
TDZ/CL Rwy 2L
MIRL Rwy 2R-20L
HIRL Rwy 2L-20R

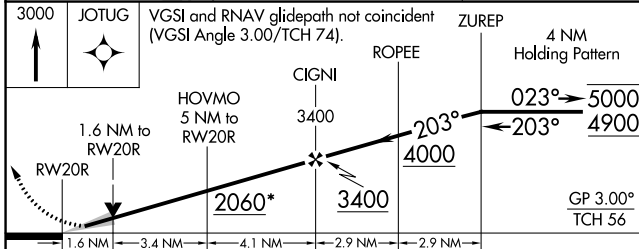
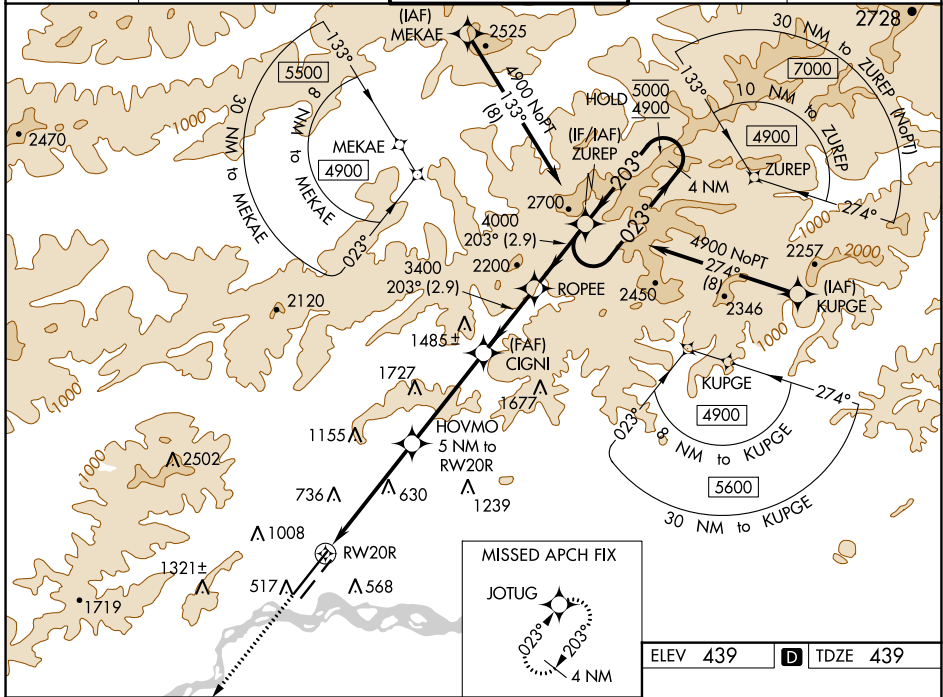
WAAS CH 58329 W20B	APP CRS 203°	Rwy ldg 11050 TDZE 439 Apt Elev 439
--	------------------------	--

RNAV (GPS) Y RWY 20R

FAIRBANKS INTL (FAI) (PAFA)

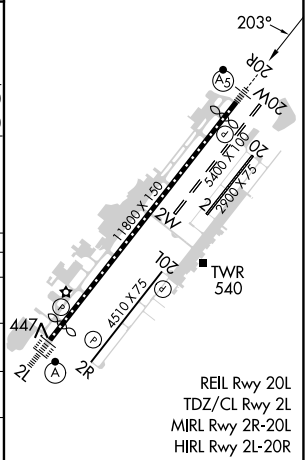
RNP APCH - GPS.		MALSR	MISSED APPROACH: Climb to 3000 direct JOTUG and hold.
⚠ Circling NA west of Rwy 2L-20R. Circling NA to Rwy 2W and 20W. ⚠ -32°C For uncompensated Baro-VNAV systems, LNAV/VNAV NA below -18°C or above 54°C. # RVR 1800 authorized with use of FD or AP or HUD to DA.			

ATIS 124.4	FAIRBANKS APP CON 125.35 363.2	FAIRBANKS TOWER 118.3 257.8	GND CON 121.9	CLNC DEL 127.6
----------------------	--	---------------------------------------	-------------------------	--------------------------



CATEGORY	A	B	C	D
LPV DA#		639/24	200 (200-½)	
LNAV/VNAV DA		1148-2	709 (800-2)	
LNAV MDA	1020/24	581 (600-½)	1020-1¼	581 (600-1¼)
C CIRCLING	1020-1	581 (600-1)	1020-1¾	1020-2
			581 (600-¾)	581 (600-2)

ELEV 439	D TDZE 439
----------	-------------------



AK, 25 JAN 2024 to 21 MAR 2024

AK, 25 JAN 2024 to 21 MAR 2024

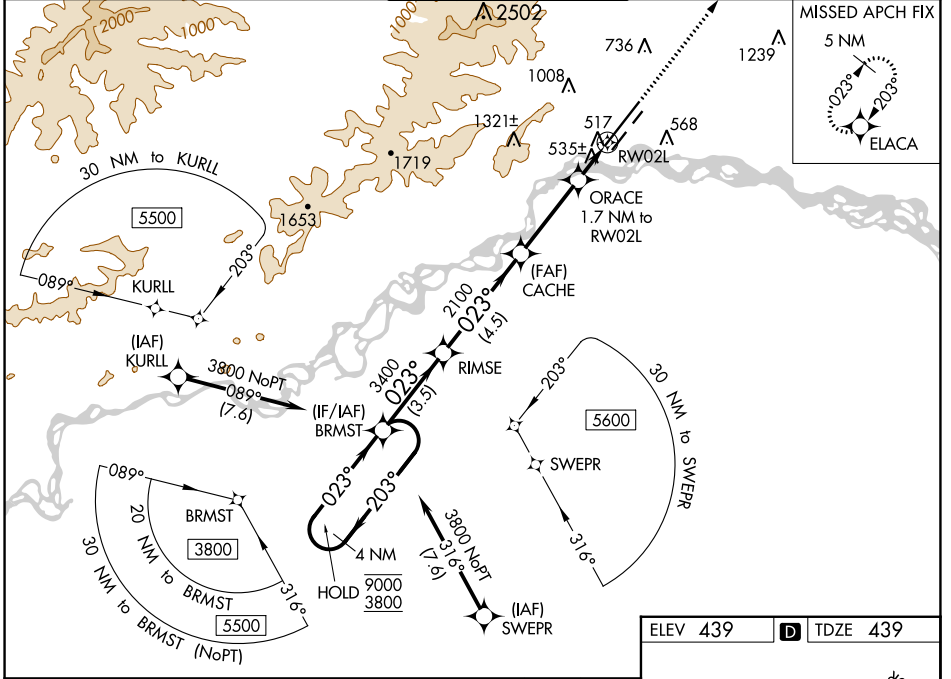
WAAS CH 57915 W02B	APP CRS 023°	Rwy Idg 11050 TDZE 439 Apt Elev 439
--	------------------------	--

RNAV (GPS) Y RWY 2L

FAIRBANKS INTL (FAI) (PAFA)

RNP APCH - GPS.	ALSF-2	MISSED APPROACH: Climb to 4900 direct ELACA and hold, continue climb-in hold to 4900.
<p>⚠ Circling NA west of Rwy 2L-20R. Circling NA to Rwy 2W and 20W.</p> <p>⚠ -32°C For uncompensated Baro-VNAV systems, LNAV/VNAV NA below -19°C or above 54°C. For inop ALS, increase LNAV/VNAV all Cats visibility to RVR 4500 and LNAV Cat C/D visibility to RVR 5500.</p>		

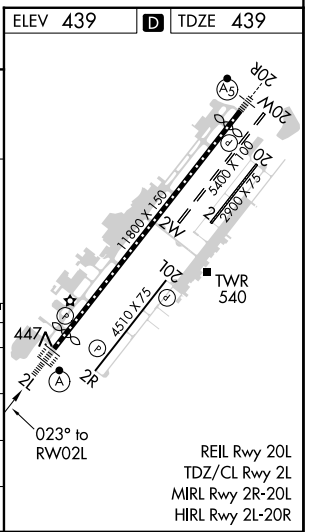
ATIS 124.4	FAIRBANKS APP CON 125.35 363.2	FAIRBANKS TOWER 118.3 257.8	GND CON 121.9	CLNC DEL 127.6
----------------------	--	---------------------------------------	-------------------------	--------------------------



AK, 25 JAN 2024 to 21 MAR 2024

AK, 25 JAN 2024 to 21 MAR 2024

4 NM Holding Pattern	VGSI and RNAV glidepath not coincident (VGSI Angle 3.00/TCH 73).	4900 ELACA
<p>9000 ← 203°</p> <p>3800 → 023°</p> <p>GP 3.00° TCH 56</p>	<p>BRMST</p> <p>RIMSE</p> <p>CACHE</p> <p>ORACE 1.7 NM to RW02L</p> <p>RW02L</p> <p>*1020</p>	<p>↑</p> <p>⬠</p>
	<p>← 3.5 NM</p> <p>← 4.5 NM</p> <p>← 3.4 NM</p> <p>← 0.8</p> <p>← 0.9</p>	



CATEGORY	A	B	C	D
LPV DA		639/18	200 (200-½)	
LNAV/VNAV DA		720/24	281 (300-½)	
LNAV MDA	800/24	361 (400-½)	800/40	361 (400-¾)
C CIRCLING	880-1 441 (500-1)	900-1 461 (500-1)	900-1½ 461 (500-1½)	1020-2 581 (600-2)

