

WAAS CH 90319 W18A	APP CRS 184°	Rwy Idg TDZE Apt Elev	6557 80 90
--	------------------------	-----------------------------	---------------------------------------

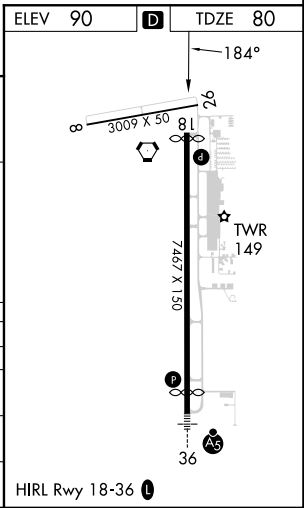
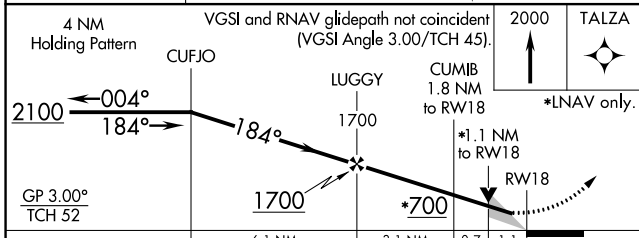
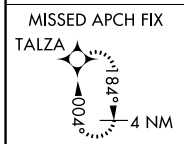
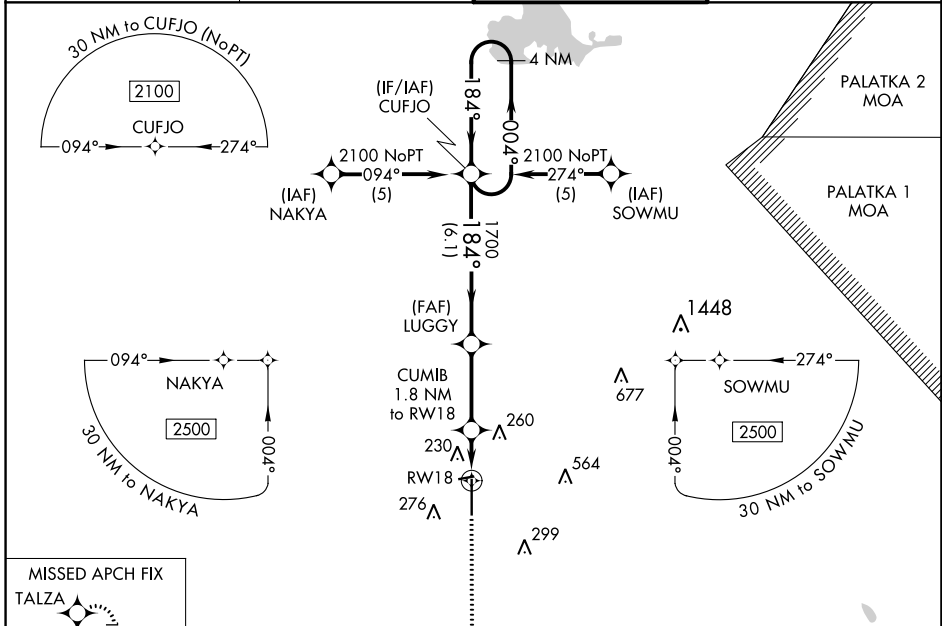
RNAV (GPS) RWY 18

OCALA INTL-JIM TAYLOR FLD (OCF)

⚠ For uncompensated Baro-VNAV systems, LNAV/VNAV NA below -15°C (5°F) or above 48°C (118°F). DME/DME RNP-0.3 NA. When local altimeter setting not received, use Gainesville altimeter setting and increase LPV DA to 361 feet, increase LNAV/VNAV DA to 595 feet and all MDA 100 feet; increase LPV and LNAV/VNAV all Cats and LNAV Cats C/D visibility ¼ SM; increase Circling Cat C visibility ½ SM, Cat D ¼ SM. Baro-VNAV and VDP NA when using Gainesville altimeter setting.

MISSED APPROACH:
Climb to 2000 direct TALZA and hold.

ATIS 128.125	JACKSONVILLE APP CON 118.6 251.15	OCALA TOWER ★ 119.25 (CTAF) 0	GND CON 121.4
------------------------	---	---	-------------------------



CATEGORY	A	B	C	D
LPV DA		280-¾	200 (200-¾)	
LNAV/VNAV DA		514-1½	434 (500-1½)	
LNAV MDA	480-1	400 (400-1)		480-1¼ 400 (400-1¼)
CIRCLING	600-1	510 (600-1)	760-1¾ 670 (700-1¾)	920-2¾ 830 (900-2¾)

HIRL Rwy 18-36 0

SE-3, 22 FEB 2024 to 21 MAR 2024

SE-3, 22 FEB 2024 to 21 MAR 2024