

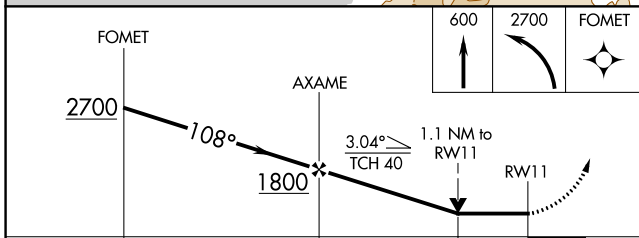
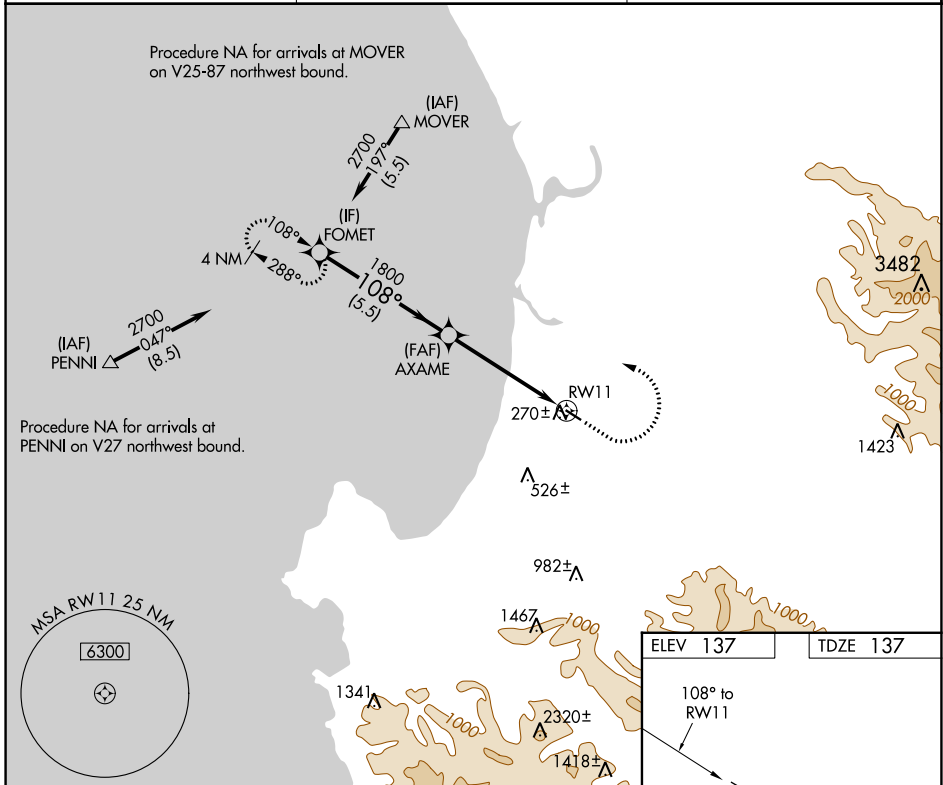
APP CRS	Rwy ldg	3483
108°	TDZE	137
	Apt Elev	137

RNAV (GPS) RWY 11

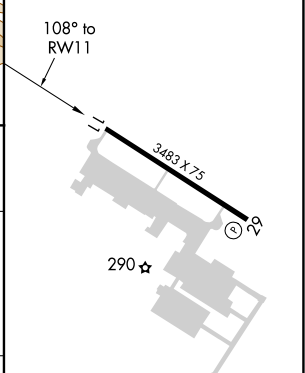
MARINA MUNI (OAR)

RNP APCH.	MISSED APPROACH: Climb to 600, then climbing left turn to 2700 direct FOMET and hold, continue climb-in-hold to 2700.
<p>▼</p> <p>▲ NA Rwy 11 helicopter visibility reduction below ¼ SM NA.</p>	

AWOS-3PT 134.025	NORCAL APP CON 133.0 251.15	UNICOM 122.7 (CTAF) 0
----------------------------	---------------------------------------	---------------------------------



ELEV 137	TDZE 137
----------	----------



CATEGORY	A	B	C	D
LNVA MDA	520-1	383 (400-1)	NA	
CIRCLING	640-1 503 (600-1)	760-1 623 (700-1)	NA	

MIRL Rwy 11-29 0

SW-2, 22 FEB 2024 to 21 MAR 2024

SW-2, 22 FEB 2024 to 21 MAR 2024