

MT. CLEMENS, MICHIGAN

RNAV (GPS) RWY 19

APCH CRS 187°	Rwy ldg 9000
THRE 579	Arpt Elev 580

AL-276 [USAF]

SELFRIDGE ANGB (KMTCC)

DME/DME RNP-0.3 NA.

ALSF-1

MISSED APPROACH: Climb to 1200 then climbing left turn to 4000 direct SQYRS (MTC TACAN R-096/T2DME), do not exceed 250 KIAS until turn completion and hold, continue climb-in-hold to 4000.

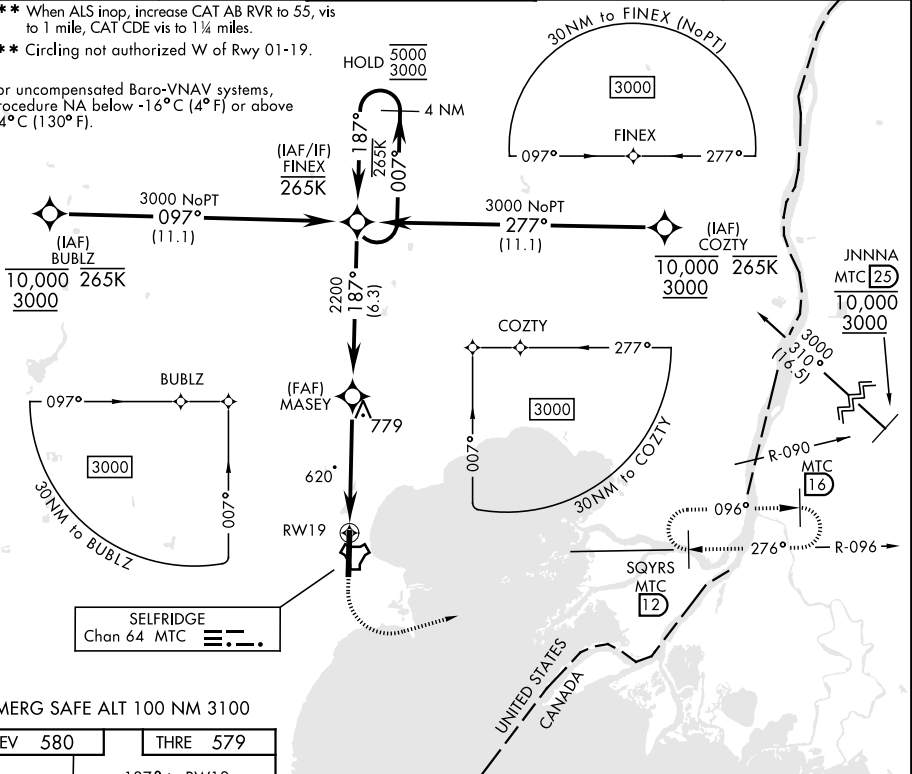
▲ * When ALS inop, increase vis to 1 ¼ miles.



ATIS 125.325 270.1	APP CON 119.6 318.2	TOWER ★ 120.15 (CTAF) 0 225.4	GND CON 128.3 275.8	CLNC DEL 128.3 275.8
------------------------------	-------------------------------	-----------------------------------------	-------------------------------	--------------------------------

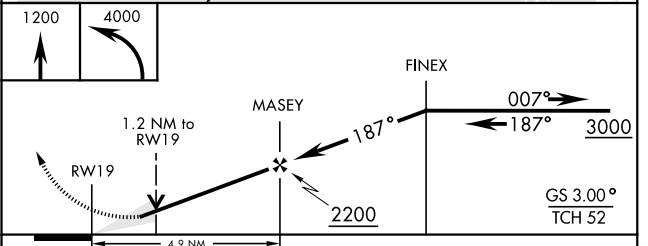
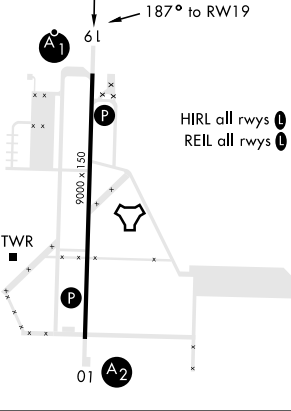
** When ALS inop, increase CAT AB RVR to 55, vis to 1 mile, CAT CDE vis to 1 ¼ miles.
 *** Circling not authorized W of Rwy 01-19.

For uncompensated Baro-VNAV systems, Procedure NA below -16°C (4°F) or above 54°C (130°F).



EMERG SAFE ALT 100 NM 3100

ELEV 580	THRE 579
-----------------	-----------------



CATEGORY	A	B	C	D	E
LNAV/VNAV DA*	1000/40		421	(500-¾)	
LNAV MDA**	1000/24	421 (500-½)	1000/40	421	(500-¾)
CIRCLING ***	1040-1	460 (500-1)	1040-1½ 460 (500-1½)	1140-2	560 (600-2)

MT. CLEMENS, MICHIGAN

42° 37' N-82° 50' W

SELFRIDGE ANGB (KMTCC)

Orig 12AUG21

RNAV (GPS) RWY 19

EC-1, 22 FEB 2024 to 21 MAR 2024

EC-1, 22 FEB 2024 to 21 MAR 2024