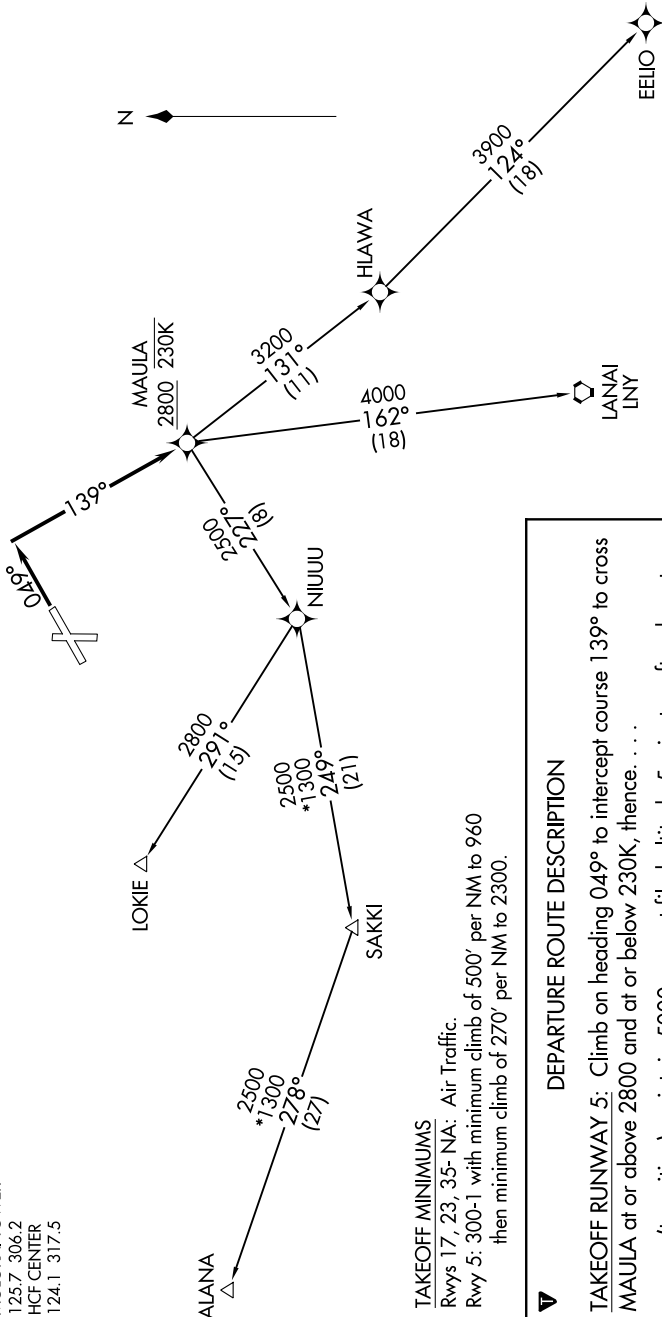


TOP ALTITUDE:
5000

ATIS
128.2
GND CON
121.9
MOLOKAI TOWER*
125.7 306.2
HCF CENTER
124.1 317.5



TAKEOFF MINIMUMS
Rwys 17, 23, 35- NA: Air Traffic.
Rwy 5: 300-1 with minimum climb of 500' per NM to 960
then minimum climb of 270' per NM to 2300.

DEPARTURE ROUTE DESCRIPTION

TAKEOFF RUNWAY 5: Climb on heading 049° to intercept course 139° to cross MAULA at or above 2800 and at or below 230K, thence...
...on (transition) maintain 5000, expect filed altitude 5 minutes after departure.

- ALANA TRANSITION (MAULA1.ALANA)
- EELIO TRANSITION (MAULA1.EELIO)
- LANAI TRANSITION (MAULA1.LNY)
- LOKIE TRANSITION (MAULA1.LOKIE)

NOTE: RNAV 1.
NOTE: GPS required.
NOTE: RADAR required.
NOTE: Chart not to scale