

WAAS CH <b>42938</b> <b>W18A</b>	APP CRS <b>179°</b>	Rwy Idg <b>5000</b> TDZE <b>55</b> Apt Elev <b>55</b>
--	------------------------	---

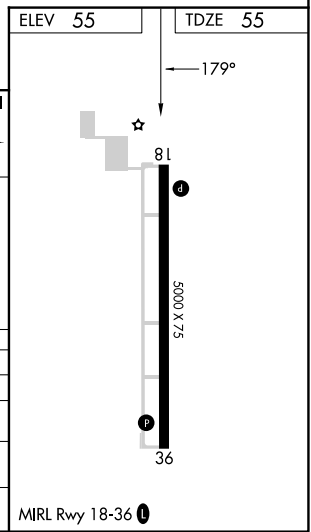
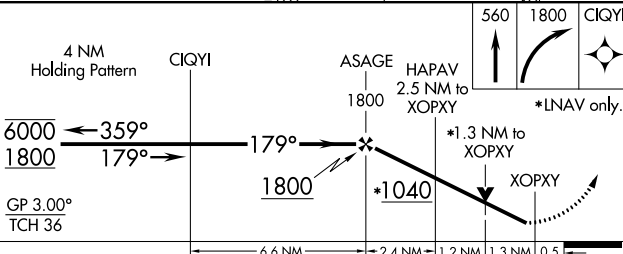
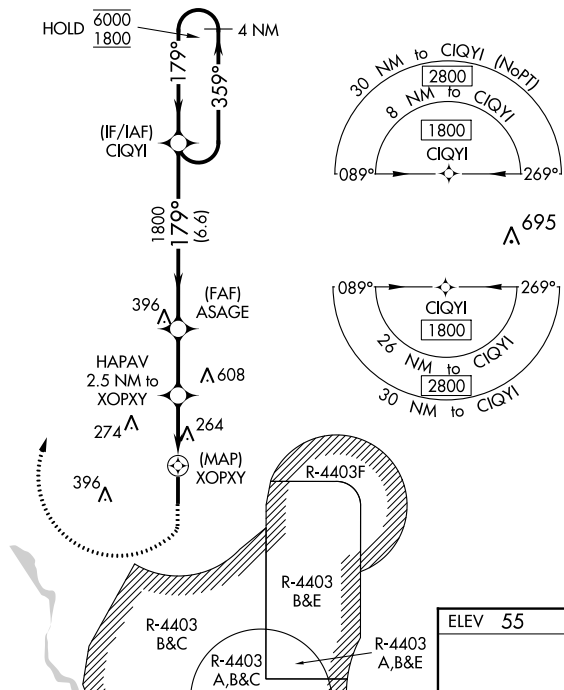
# RNAV (GPS) Y RWY 18

PICAYUNE MUNI (MJD)

RNP APCH.	AWOS-3PT <b>119.075</b>	GULFPORT APP CON * <b>124.6 354.1</b>	UNICOM <b>122.8 (CTAF) 0</b>
-----------	----------------------------	--	---------------------------------

**⚠** Baro-VNAV and VDP NA when using Stennis Intl altimeter setting. Rwy 18 helicopter visibility reduction below 3/4 SM NA. For uncompensated Baro-VNAV systems, LNAV/VNAV NA below -15°C or above 5°C. When local altimeter setting not received, use Stennis Intl altimeter setting: increase LPV DA to 377 and visibility all Cats 1/8 mile; increase LNAV/VNAV DA to 621 and visibility all Cats 1/8 mile; increase all MDA 40 feet. Procedure NA when R-4403 B/C/E is active.

**MISSED APPROACH:** (Do not exceed 185K) Climb to 560 then climbing right turn to 1800 direct CIQYI and hold.



CATEGORY	A	B	C	D
LPV DA	343-1		288 (300-1)	
LNAV/VNAV DA	587-1 7/8		532 (600-1 1/2)	
LNAV MDA	520-1	465 (500-1)	520-1 3/8	465 (500-1 3/8)
<b>C</b> CIRCLING	520-1 465 (500-1)	580-1 525 (600-1)	NA	

SC-4, 22 FEB 2024 to 21 MAR 2024

SC-4, 22 FEB 2024 to 21 MAR 2024