

BNGOS THREE DEPARTURE (RNAV)
(BNGOS3.BNGOS) 03NOV22

Departure Routes

MIAMI, FLORIDA
MIAMI INTL (MIA)

BNGOS See following page for transition routes.

RNAV-1 DME/DME/IRU or GPS.
RADAR required.

TOP ALTITUDE:
5000

D-ATIS
133.675
CLNC DEL
135.35
CPDLC
GND CON
(Rwys 8L/R, 12, 26L/R)
121.8 348.6
(Rwys 9, 27, 30)
127.5 348.6
MIAMI TOWER
118.3 256.9
MIAMI DEP CON
119.45 290.325

TAKEOFF MINIMUMS

- Rwy 8L: Standard with minimum climb of 500' per NM to 520, then minimum climb of 215' per NM to 1400.
- Rwy 8R: Standard with minimum climb of 500' per NM to 520, then minimum climb of 235' per NM to 1400.
- Rwy 9: Standard with minimum climb of 500' per NM to 520, then minimum climb of 240' per NM to 1400.
- Rwy 12: Standard with minimum climb of 500' per NM to 520, then minimum climb of 230' per NM to 1400.
- Rwys 26L/R, 27, 30: Standard with minimum climb of 500' per NM to 520.

MRENO
5000

N

NOTE: Jet aircraft only.
NOTE: Accelerate to 250K, if unable, advise ATC.

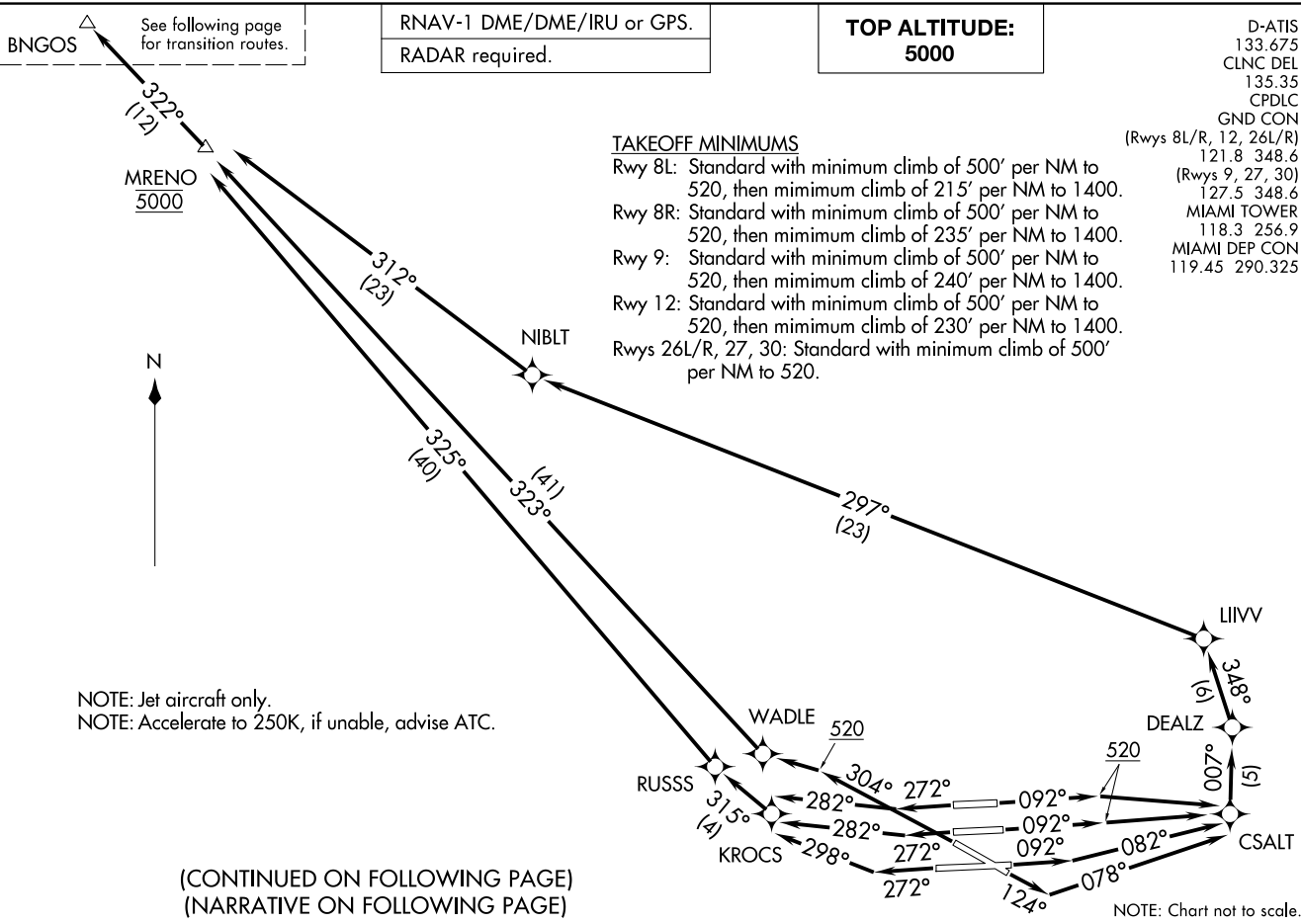
(CONTINUED ON FOLLOWING PAGE)
(NARRATIVE ON FOLLOWING PAGE)

NOTE: Chart not to scale.

(BNGOS3.BNGOS) 22307
BNGOS THREE DEPARTURE (RNAV)

AL-257 (FAA)
Departure Routes

MIAMI INTL (MIA)
MIAMI, FLORIDA



(BNGOS3.BNGOS) 22307

AL-257 (FAA)

MIAMI INTL (MIA)
MIAMI, FLORIDA

BNGOS THREE DEPARTURE (RNAV) Transition Routes

RNAV-1 DME/DME/IRU or GPS.	TOP ALTITUDE: 5000	D-ATIS 133.675 CLNC DEL 135.35 CPDLC GND CON (Rwys 8L/R, 12, 26L/R) 121.8 348.6 (Rwys 9, 27, 30) 127.5 348.6 MIAMI TOWER 118.3 256.9 MIAMI DEP CON 119.45 290.325
RADAR required.		

NOTE: Jet aircraft only.
NOTE: Accelerate to 250K, if unable, advise ATC.
NOTE: MERKS Transition ATC assigned only except aircraft landing: MKY, RSW, APF, PGD and FMY.

TAKEOFF MINIMUMS

Rwy 8L: Standard with minimum climb of 500' per NM to 520, then minimum climb of 215' per NM to 1400.

Rwy 8R: Standard with minimum climb of 500' per NM to 520, then minimum climb of 235' per NM to 1400.

Rwy 9: Standard with minimum climb of 500' per NM to 520, then minimum climb of 240' per NM to 1400.

Rwy 12: Standard with minimum climb of 500' per NM to 520, then minimum climb of 230' per NM to 1400.

Rwys 26L/R, 27, 30: Standard with minimum climb of 500' per NM to 520.

NOTE: Chart not to scale.

DEPARTURE ROUTE DESCRIPTION
SEE ADDITIONAL REQUIREMENTS ON AAUP

TAKEOFF RUNWAYS 8L/R: Climb on heading 092° to 520, then direct CSALT, then on track 007° to DEALZ, then on track 348° to LIIVV, then on track 297° to NIBLT, then on track 312° to cross MRENO at 5000, thence. . .

TAKEOFF RUNWAY 9: Climb on heading 092° to intercept course 082° to CSALT, then on track 007° to DEALZ, then on track 348° to LIIVV, then on track 297° to NIBLT, then on track 312° to cross MRENO at 5000, thence. . .

TAKEOFF RUNWAY 12: Climb on heading 124° to intercept course 078° to CSALT, then on track 007° to DEALZ, then on track 348° to LIIVV, then on track 297° to NIBLT, then on track 312° to cross MRENO at 5000, thence. . .

TAKEOFF RUNWAYS 26L/R: Climb on heading 272° to intercept course 282° to KROCS, then on track 315° to RUSSS, then on track 325° to cross MRENO at 5000, thence. . .

TAKEOFF RUNWAY 27: Climb on heading 272° to intercept course 298° to KROCS, then on track 315° to RUSSS, then on track 325° to cross MRENO at 5000, thence. . .

TAKEOFF RUNWAY 30: Climb on heading 304° to 520, then direct WADLE, then on track 323° to cross MRENO at 5000, thence. . .

. . .on track 322° to BNGOS, then on transition, maintain 5000, expect clearance to filed altitude within 10 minutes after departure.

COREA TRANSITION (BNGOS3.COREA)
DOLIE TRANSITION (BNGOS3.DOLIE)
MERKS TRANSITION (BNGOS3.MERKS)

SE-3, 22 FEB 2024 to 21 MAR 2024

SE-3, 22 FEB 2024 to 21 MAR 2024