

LOC/DME I-MHT 109.1 Chan 28	APP CRS 352°	Rwy Idg 7650 TDZE 265 Apt Elev 266
--	------------------------	---

ILS RWY 35 (SA CAT I)

MANCHESTER BOSTON RGNL (MHT)

From SHOWZ: RNAV 1-DME/DME/IRU or GPS required.
DME or RADAR required.

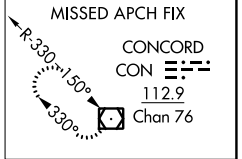
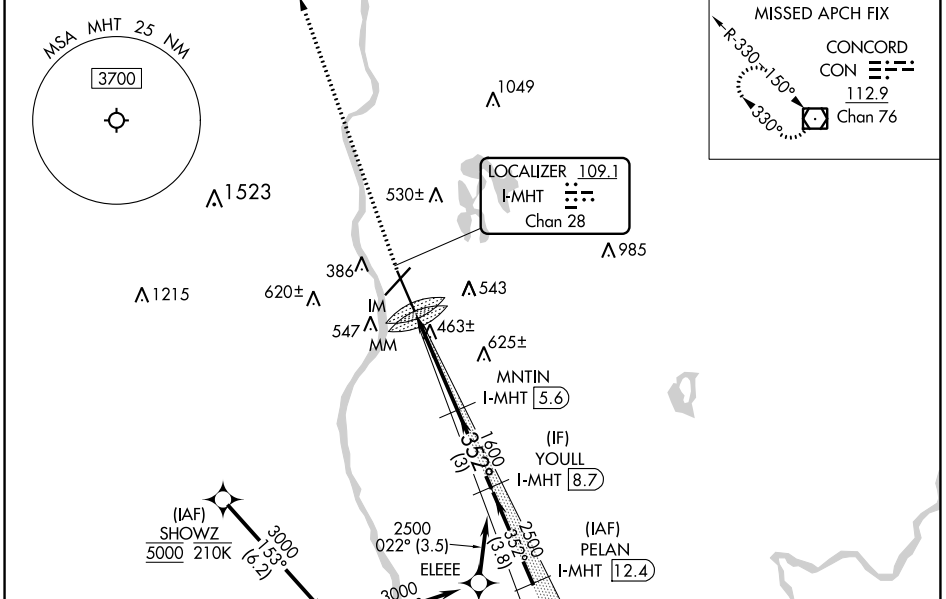
ALSF-2



MISSED APPROACH: Climb to 4000 direct CON VOR/DME and hold.

▼ Rwy 35 helicopter visibility reduction below RVR 4000 NA. Requires specific OPSPEC, MSPEC, or LOA approval and use of HUD to DH.

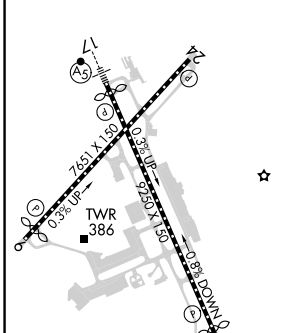
ATIS 119.55	BOSTON APP CON 124.9 269.075	MANCHESTER TOWER 121.3 239.025	GND CON 121.9	CLNC DEL 135.9
-----------------------	--	--	-------------------------	--------------------------



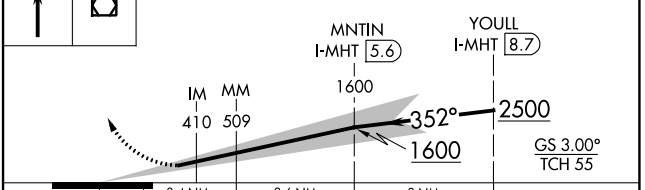
NE-1, 22 FEB 2024 to 21 MAR 2024

NE-1, 22 FEB 2024 to 21 MAR 2024

ELEV 266	D	TDZE 265
----------	----------	----------



4000 CON VGS I and ILS glidepath not coincident (VGS I Angle 3.00/TCH 68).



CATEGORY	A	B	C	D
S-ILS 35	RA 138/14 150 DA 415			

SA CATEGORY I ILS - SPECIAL AIRCREW & AIRCRAFT CERTIFICATION REQUIRED

REIL Rws 6 and 24
TDZ/CL Rwy 17 and 35
HIRL Rws 6-24 and 17-35