

(WILSY3.WILSY) 23222

# WILSY THREE DEPARTURE (RNAV)

AL-5241 (FAA)

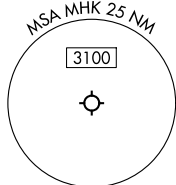
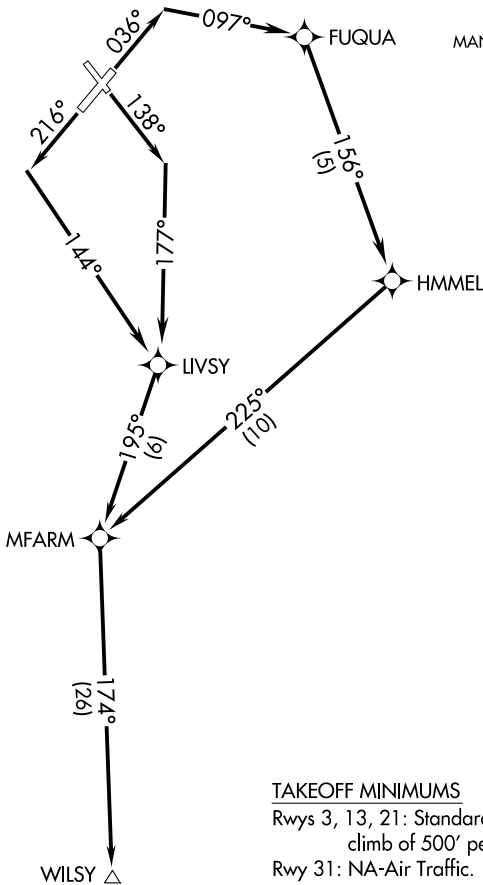
MANHATTAN RGNL (MHK)  
MANHATTAN, KANSAS

RNAV 1 - DME/DME/IRU or GPS.

RADAR required for non-GPS equipped aircraft.  
RWY 3: For non-GPS equipped aircraft, MHK DME must be operational.

**TOP ALTITUDE:  
4000**

MARSHALL AAF GCA\*  
121.25 254.35  
KANSAS CITY CENTER  
127.35 257.975  
ASOS  
119.075  
GND CON  
121.85  
MANHATTAN TOWER\*  
118.55 (CTAF)



NOTE: Chart not to scale.

### TAKEOFF MINIMUMS

Rwys 3, 13, 21: Standard with minimum climb of 500' per NM to 1566.  
Rwy 31: NA-Air Traffic.

### DEPARTURE ROUTE DESCRIPTION

TAKEOFF RUNWAY 3: Climb on heading 036° to intercept course 097° to FUQUA, then on track 156° to HMMEL, then on track 225° to MFARM. Thence. . .

TAKEOFF RUNWAY 13: Climb on heading 138° to intercept course 177° to LIVSY, then on track 195° to MFARM. Thence. . .

TAKEOFF RUNWAY 21: Climb on heading 216° to intercept course 144° to LIVSY, then on track 195° to MFARM. Thence. . .

. . . on track 174° to WILSY. Maintain 4000, expect filed altitude ten minutes after departure.

WILSY THREE DEPARTURE (RNAV)  
(WILSY3.WILSY) 10AUG23

MANHATTAN, KANSAS  
MANHATTAN RGNL (MHK)

NC-2, 22 FEB 2024 to 21 MAR 2024

NC-2, 22 FEB 2024 to 21 MAR 2024