

MARIETTA, GEORGIA

RNAV (GPS) RWY 29

APCH CRS 289°	Rwy Idg 10,002
	TDZE 1014
	Arprt Elev 1069

AL-959 (USAF)

DOBBINS ARB (KMGE)

⚠ * When ALS inop, increase vis to 1 3/8 miles.
 ** When ALS inop, increase CAT AB RVR to 55 and vis to 1 mile, CAT CDE vis to 1 3/8 miles.
 *** Circling not authorized N of Rwy 11-29 for CAT DE. Circling to assault strip not authorized.

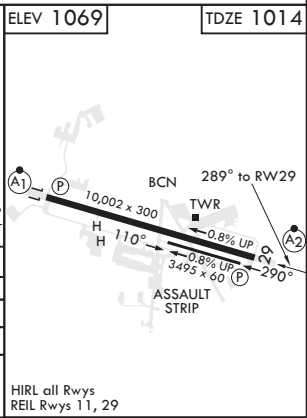
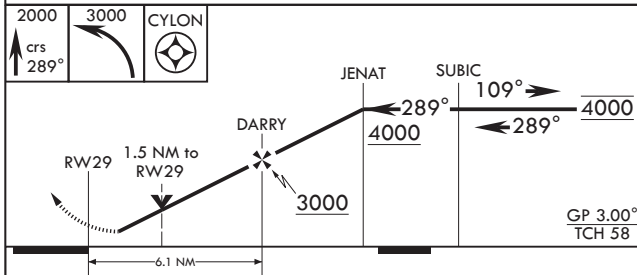
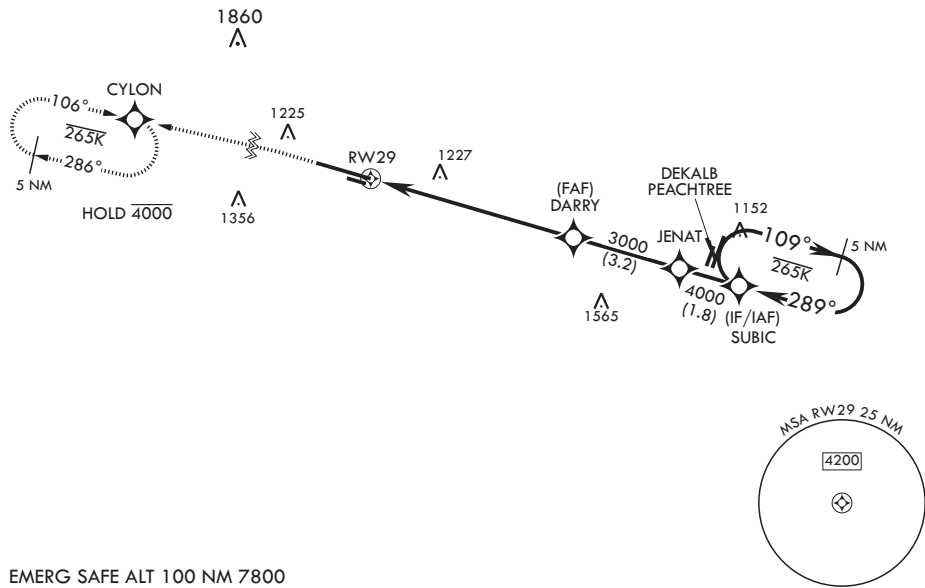


MISSED APPROACH: Climb to 2000 then climbing left turn to 3000 direct CYLON and hold.

ATIS★ 269.5	ATLANTA APP CON/DEP CON 121.0 268.7	TOWER★ 120.75 370.875	GND CON 125.3 275.8	ASR
-----------------------	---	---------------------------------	-------------------------------	-----

RNP APCH
 DME/DME RNP-0.3 NA

For uncompensated Baro-VNAV systems,
 LNAV/VNAV NA below -17°C or above 54°C.



CATEGORY	A	B	C	D	E
LNAV/VNAV DA*	1480/60		466	(500-1¼)	
LNAV MDA**	1520/40	506 (500-¾)	1520-1¼	506	(500-1¼)
CIRCLING***	1580-1 511 (600-1)	1620-1 551 (600-1)	1720-1¾ 651 (700-1¾)	1720-2 651 (700-2)	1720-2¼ 651 (700-2¼)

MARIETTA, GEORGIA
 Amdt 2 19MAY22

33°55'N - 84°31'W

DOBBINS ARB (KMGE)

RNAV (GPS) RWY 29

SE-4, 22 FEB 2024 to 21 MAR 2024

SE-4, 22 FEB 2024 to 21 MAR 2024