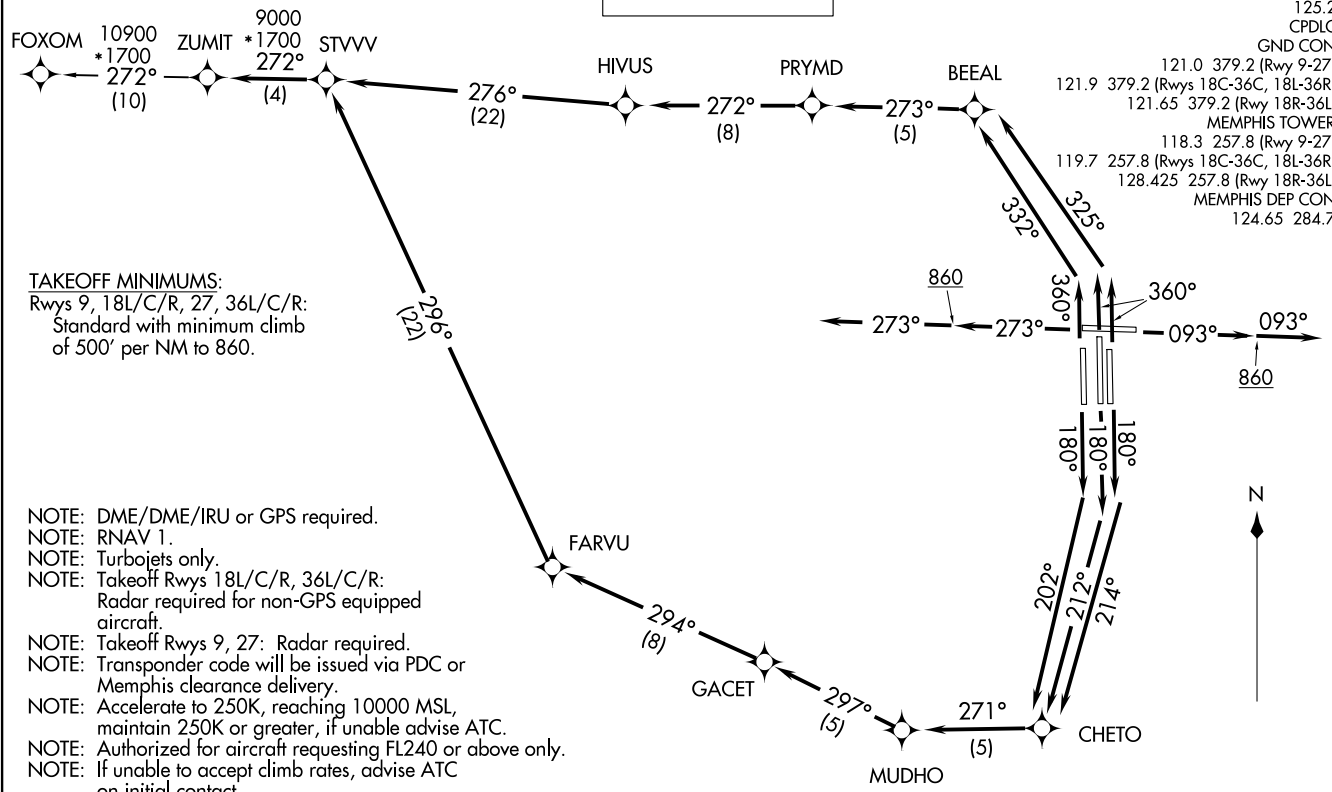


**TOP ALTITUDE:
5000**

D-ATIS 127.75
CLNC DEL 125.2
CPDLC
GND CON
121.0 379.2 (Rwy 9-27)
121.9 379.2 (Rwys 18C-36C, 18L-36R)
121.65 379.2 (Rwy 18R-36L)
MEMPHIS TOWER
118.3 257.8 (Rwy 9-27)
119.7 257.8 (Rwys 18C-36C, 18L-36R)
128.425 257.8 (Rwy 18R-36L)
MEMPHIS DEP CON
124.65 284.7

(ZUMIT5 ZUMIT) 21224
AL-253 (FAA)

MEMPHIS INTL (MEM) MEMPHIS, TENNESSEE



TAKEOFF MINIMUMS:
Rwys 9, 18L/C/R, 27, 36L/C/R:
Standard with minimum climb
of 500' per NM to 860.

- NOTE: DME/DME/IRU or GPS required.
- NOTE: RNAV 1.
- NOTE: Turbojets only.
- NOTE: Takeoff Rwys 18L/C/R, 36L/C/R:
Radar required for non-GPS equipped aircraft.
- NOTE: Takeoff Rwys 9, 27: Radar required.
- NOTE: Transponder code will be issued via PDC or Memphis clearance delivery.
- NOTE: Accelerate to 250K, reaching 10000 MSL, maintain 250K or greater, if unable advise ATC.
- NOTE: Authorized for aircraft requesting FL240 or above only.
- NOTE: If unable to accept climb rates, advise ATC on initial contact.

(NARRATIVE ON FOLLOWING PAGE)

NOTE: Chart not to scale.

ZUMIT FIVE DEPARTURE (RNAV)
(ZUMIT5 ZUMIT) 31DECC20

MEMPHIS, TENNESSEE
MEMPHIS INTL (MEM)

ZUMIT FIVE DEPARTURE (RNAV)

DEPARTURE ROUTE DESCRIPTION



TAKEOFF RUNWAY 9: Climb on heading 093° to 860, then continue climb on heading 093°, expect vectors to STVVV, then on depicted route to ZUMIT, thence....

TAKEOFF RUNWAY 18C: Climb on heading 180° to intercept course 212° to CHETO, then on depicted route to ZUMIT, thence....

TAKEOFF RUNWAY 18L: Climb on heading 180° to intercept course 214° to CHETO, then on depicted route to ZUMIT, thence....

TAKEOFF RUNWAY 18R: Climb on heading 180° to intercept course 202° to CHETO, then on depicted route to ZUMIT, thence....

TAKEOFF RUNWAY 27: Climb on heading 273° to 860, then continue climb on heading 273°, expect vectors to STVVV, then on depicted route to ZUMIT, thence....

TAKEOFF RUNWAY 36L: Climb on heading 360° to intercept course 332° to BEEAL, then on depicted route to ZUMIT, thence....

TAKEOFF RUNWAYS 36C/R: Climb on heading 360° to intercept course 325° to BEEAL, then on depicted route to ZUMIT, thence....

....maintain 5000. Expect clearance to filed altitude within ten (10) minutes after departure.

FOXOM TRANSITION (ZUMIT5.FOXOM):

SE-1, 22 FEB 2024 to 21 MAR 2024

SE-1, 22 FEB 2024 to 21 MAR 2024