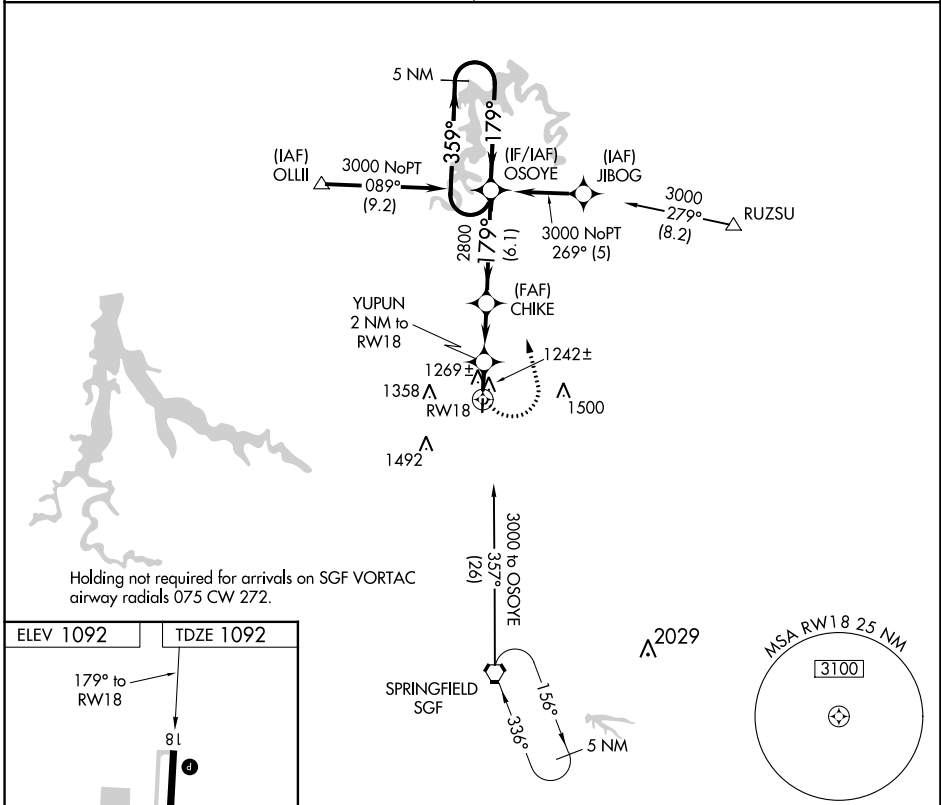


APP CRS	Rwy Idg	<b>4000</b>
<b>179°</b>	TDZE	<b>1092</b>
	Apt Elev	<b>1092</b>

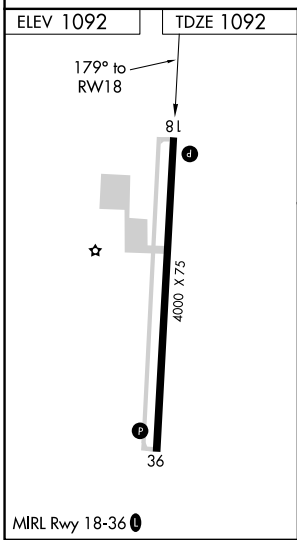
# RNAV (GPS) RWY 18

BOLIVAR MUNI (M17)

<p><b>▽</b> DME/DME RNP-0.3 NA.  <b>△</b> NA Visibility reduction by helicopters NA.                  Use Springfield-Branson Ntl altimeter setting.                  Straight-in and Circling Rwy 18 NA at night.</p>	<p>MISSED APPROACH: Climbing left turn to 3000                  direct OSOYE and hold.</p>
<p>SPRINGFIELD APP CON  <b>124.95 318.2</b></p>	<p>UNICOM  <b>123.0 (CTAF) 1</b></p>



Holding not required for arrivals on SGF VORTAC  
 airway radials 075 CW 272.



3000	OSOYE	CHIKE	OSOYE	5 NM Holding Pattern
YUPUN 2 NM to RWY 18	CHIKE	OSOYE	3000	
1760	2800	179°	359°	
2 NM	3.2 NM	6.1 NM		
CATEGORY	A	B	C	D
LNAV MDA	1600-1	508 (600-1)	1600-1½ 508 (600-1½)	NA
CIRCLING	1660-1	568 (600-1)	1740-1¾ 648 (700-1¾)	NA

NC-3, 22 FEB 2024 to 21 MAR 2024

NC-3, 22 FEB 2024 to 21 MAR 2024