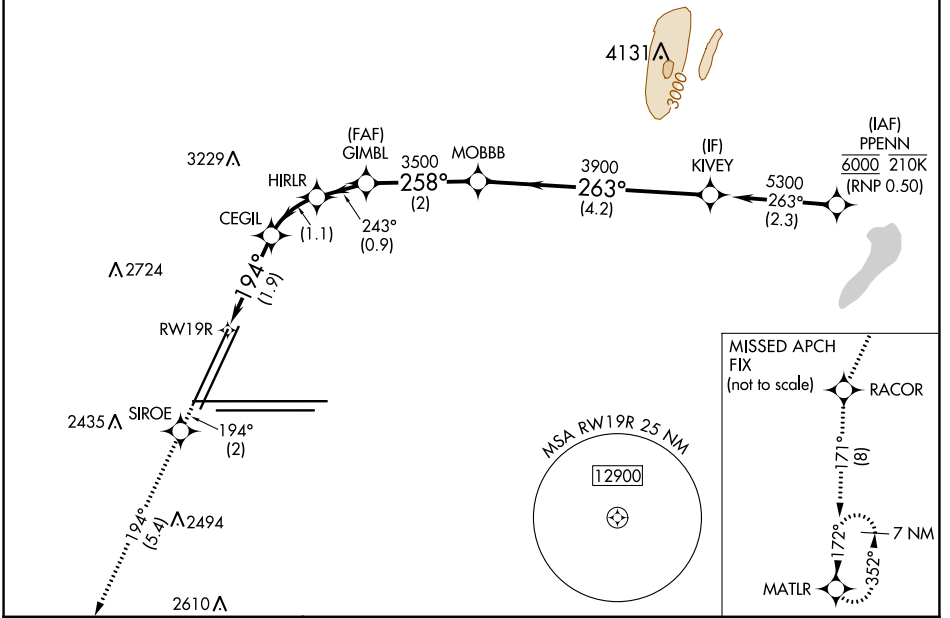


|             |          |             |
|-------------|----------|-------------|
| APP CRS     | Rwy Idg  | <b>8417</b> |
| <b>194°</b> | TDZE     | <b>2117</b> |
|             | Apt Elev | <b>2181</b> |

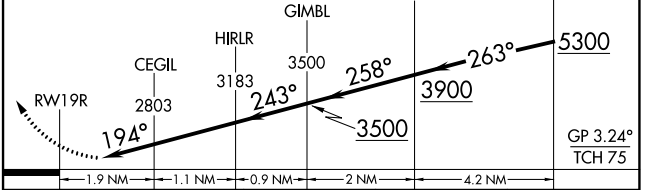
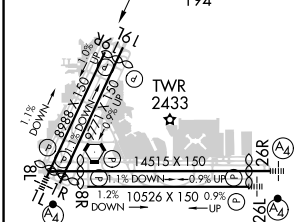
# RNAV (RNP) Z RWY 19R

HARRY REID INTL (LAS)

|  |   |  |  |  |              |
|--|---|--|--|--|--------------|
| RNP AR APCH. RF required.  |   | MISSED APPROACH: Climb to 7000 on the RNAV missed approach route to MATLR and hold, continue climb-in-hold to 7000.<br>*Missed approach requires minimum climb of 300 feet per NM to 3000. |  |  |              |
| ▼ For uncompensated Baro-VNAV systems, procedure NA below 0°C or above 54°C. Missed approach requires RNP less than 1.0. |   |  |  |  |              |
| D-ATIS   | LAS VEGAS APP CON   | LAS VEGAS TOWER  |  | GND CON  | CLNC DEL     |
| <b>132.4</b>   | <b>125.025 379.15 (West)</b><br><b>119.775 282.2 (East)</b> | <b>118.75 257.8 (Rwy 1L/19R, 1R/19L)</b><br><b>119.9 257.8 (Rwy 8L/26R, 8R/26L)</b>  |  | <b>121.1 270.8 E of 1R/19L</b><br><b>121.9 254.3 W of 1R/19L</b> | <b>118.0</b> |



|           |          |           |      |         |         |         |  |  |
|-----------|----------|-----------|------|---------|---------|---------|--|--|
| ELEV 2181 | <b>D</b> | TDZE 2117 | 7000 | SIROE   | RACOR   | MATLR   | VGSI and RNAV glidepath not coincident (VGSI Angle 3.04/TCH 80). |  |
|           |          |           | ↑    | tr 194° | tr 194° | tr 171° |  |  |



| CATEGORY     | A | B                    | C                          | D |
|--------------|---|----------------------|----------------------------|---|
| RNP 0.10 DA* |   | 2558-1 $\frac{3}{8}$ | 441 (400-1 $\frac{3}{8}$ ) |   |
| RNP 0.20 DA* |   | 2576-1 $\frac{3}{8}$ | 459 (400-1 $\frac{3}{8}$ ) |   |
| RNP 0.30 DA* |   | 2636-1 $\frac{3}{8}$ | 519 (500-1 $\frac{3}{8}$ ) |   |
| RNP 0.30 DA  |   | 2669-1 $\frac{3}{8}$ | 552 (500-1 $\frac{3}{8}$ ) |   |

MIRL Rwy 1R-19L  
REIL Rwy 1R, 8R, 19L and 19R  
HIRL Rwy 1L-19R, 8L-26R and 8R-26L

## AUTHORIZATION REQUIRED

SW-4, 22 FEB 2024 to 21 MAR 2024

SW-4, 22 FEB 2024 to 21 MAR 2024