

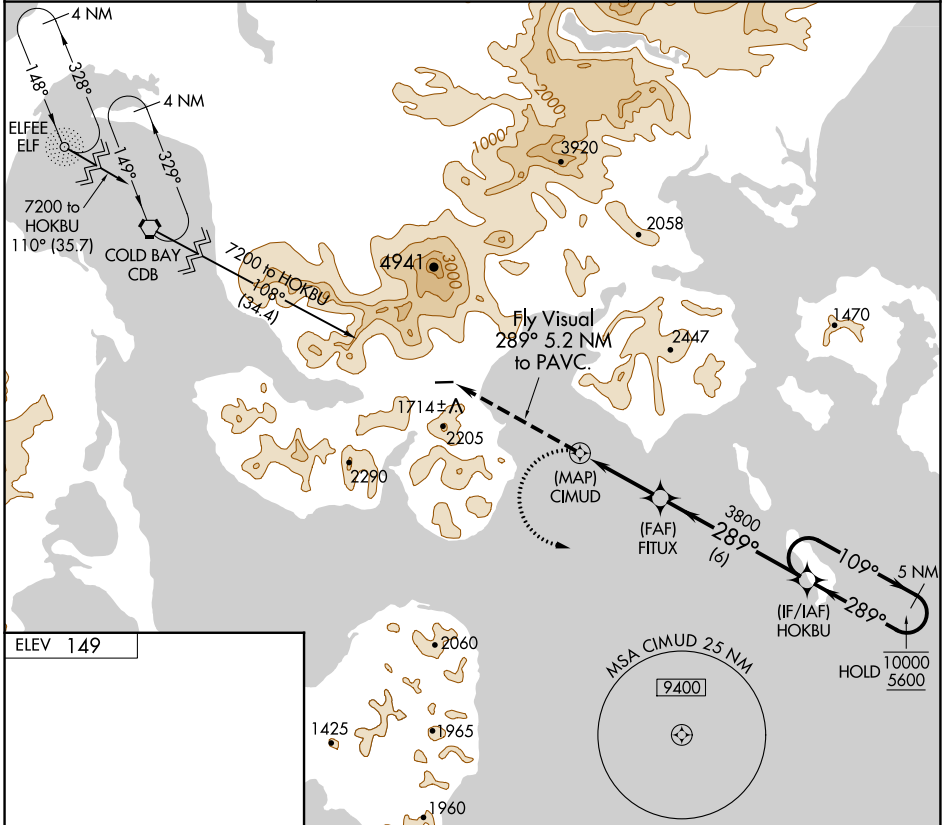
APP CRS <b>289°</b>	Rwy Idg TDZE Apt Elev	<b>N/A</b> <b>N/A</b> <b>149</b>
------------------------	-----------------------------	--

# RNAV (GPS)-A

KING COVE (KVC)(PAVC)

RNP APCH.	MISSED APPROACH: Climbing left turn to 5600 direct HOKBU and hold.
Procedure NA at night. Circling NA north Rwy 8 and 26. -9°C	

AWOS-3P <b>118.325</b>	ANCHORAGE CENTER <b>118.5 278.3</b>	CTAF <b>122.9</b>
---------------------------	--	----------------------



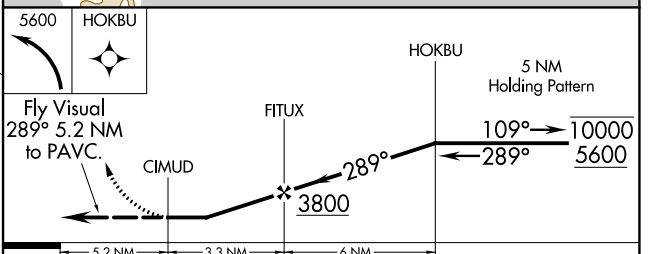
ELEV **149**

3500 X 115

Fly Visual 289° 5.2 NM to PAVC.

REIL Rwys 8 and 26

MIRL Rwy 8-26



CATEGORY	A	B	C	D
	2080-6	2520-6	NA	
CIRCLING	1931 (2000-6)	2371 (2400-6)	NA	

AK, 25 JAN 2024 to 21 MAR 2024

AK, 25 JAN 2024 to 21 MAR 2024