

LOC/DME	I-OTI	APP CRS	Rwy Idg	2999
108.5		219°	TDZE	172
Chan 22			Apt Elev	172

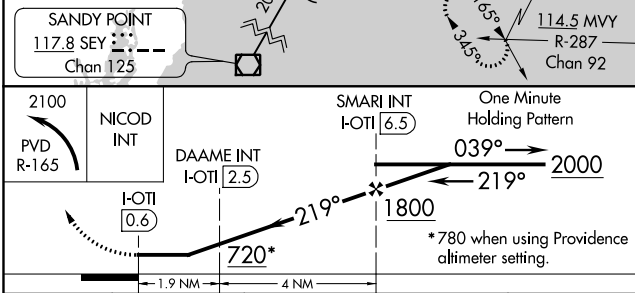
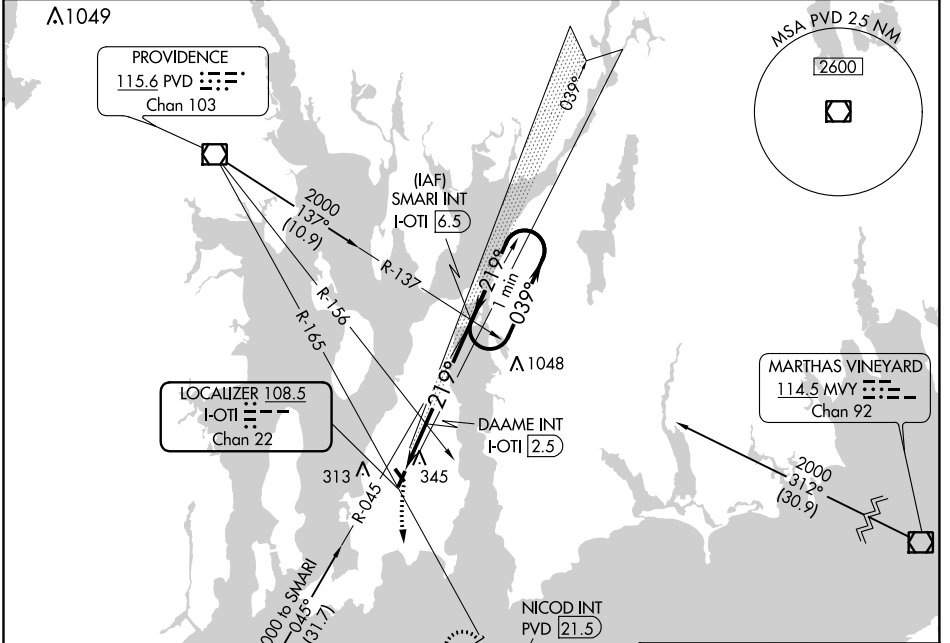
LOC RWY 22

NEWPORT STATE (UUU)

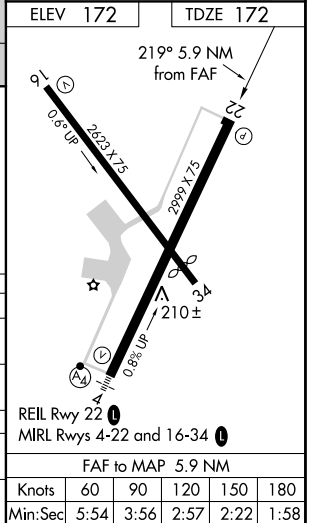
NA When local altimeter setting not received, use Providence altimeter setting and increase all MDA 60 feet. Straight-in Rwy 22 NA at night, Circling Rwy 4, 22, 34 NA at night.

MISSED APPROACH: Climbing left turn to 2100 via PVD VOR/DME R-165 to NICOD INT/21.5 DME and hold.

ASOS	PROVIDENCE APP CON*	CLNC DEL	UNICOM
132.075	128.7 269.525	127.25	123.05 (CTAF) 0



CATEGORY	A	B	C	D
S-22	720-1	548 (600-1)	720-1 ⁵ / ₈ 548 (600-1 ⁵ / ₈)	NA
CIRCLING	760-1	588 (600-1)	760-1 ¹ / ₂ 588 (600-1 ¹ / ₂)	NA
DAAME FIX MINIMUMS (DUAL VOR RECEIVERS OR DME REQUIRED)				
S-22	640-1	468 (500-1)	640-1 ¹ / ₄ 468 (500-1 ¹ / ₄)	NA
CIRCLING	760-1	588 (600-1)	760-1 ¹ / ₂ 588 (600-1 ¹ / ₂)	NA



NE-1, 25 FEB 2021 to 25 MAR 2021

NE-1, 25 FEB 2021 to 25 MAR 2021

APP CRS 166°	Rwy Idg 2623
	TDZE 162
	Apt Elev 172

RNAV (GPS) RWY 16

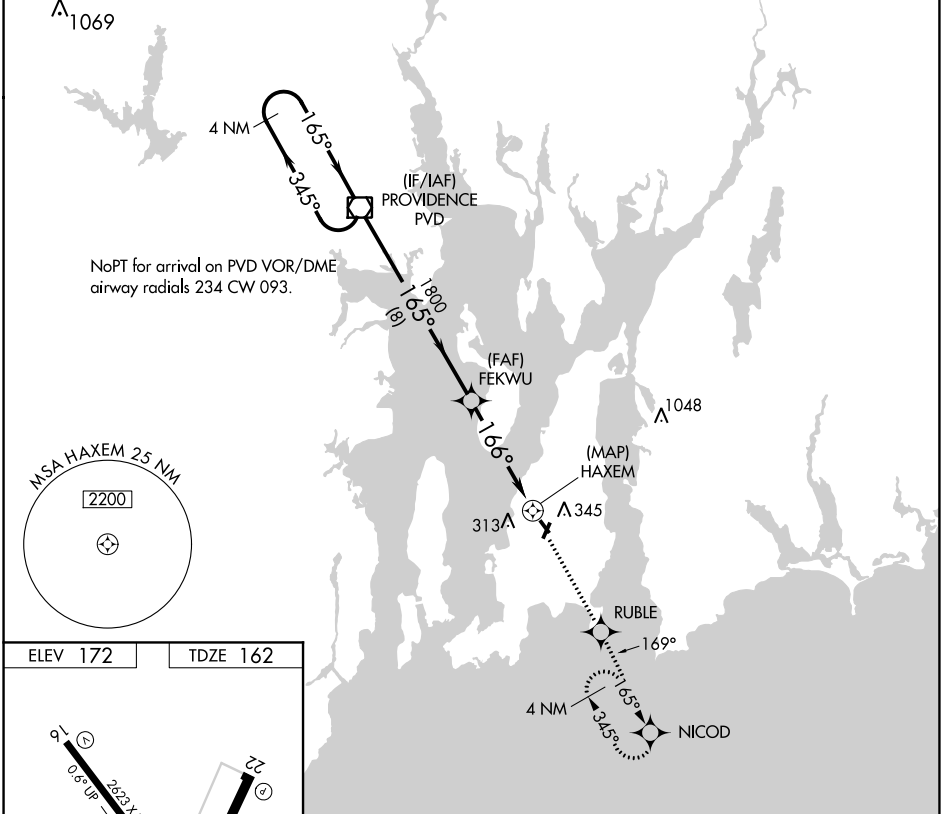
NEWPORT STATE (UUU)

RNP APCH

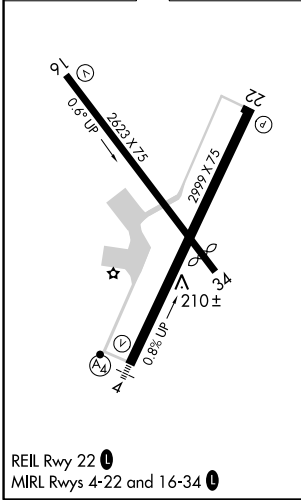
When local altimeter setting not received, use Providence altimeter setting and increase all MDAs 60 feet. Circling Rwy 4, 22, 34 NA at night.
Rwy 16 helicopter visibility reduction below 3/4 SM NA.

MISSED APPROACH: Climb to 2100 direct RUBLE and via 169° track to NICOD and hold.

ASOS 132.075	PROVIDENCE APP CON * 128.7 269.525	CLNC DEL 127.25	UNICOM 123.05 (CTAF)
------------------------	--	---------------------------	--------------------------------

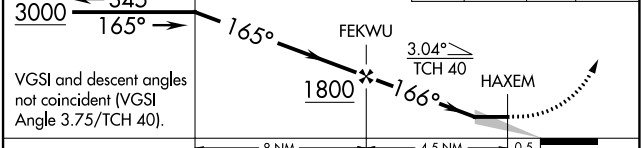


ELEV 172	TDZE 162
----------	----------



REIL Rwy 22
MIRL Rws 4-22 and 16-34

4 NM Holding Pattern	PVD VOR/DME	2100	RUBLE	tr 169°	NICOD
----------------------	-------------	------	-------	---------	-------



CATEGORY	A	B	C	D
LNAV MDA	600-1	438 (500-1)	600-1 1/4 438 (500-1 1/4)	NA
CIRCLING	700-1	528 (600-1)	700-1 1/2 528 (600-1 1/2)	NA

NE-1, 25 FEB 2021 to 25 MAR 2021

NE-1, 25 FEB 2021 to 25 MAR 2021

VOR/DME PVD 115.6 Chan 103	APP CRS 164°	Rwy Idg TDZE Apt Elev	2623 162 172
--	------------------------	-----------------------------	---

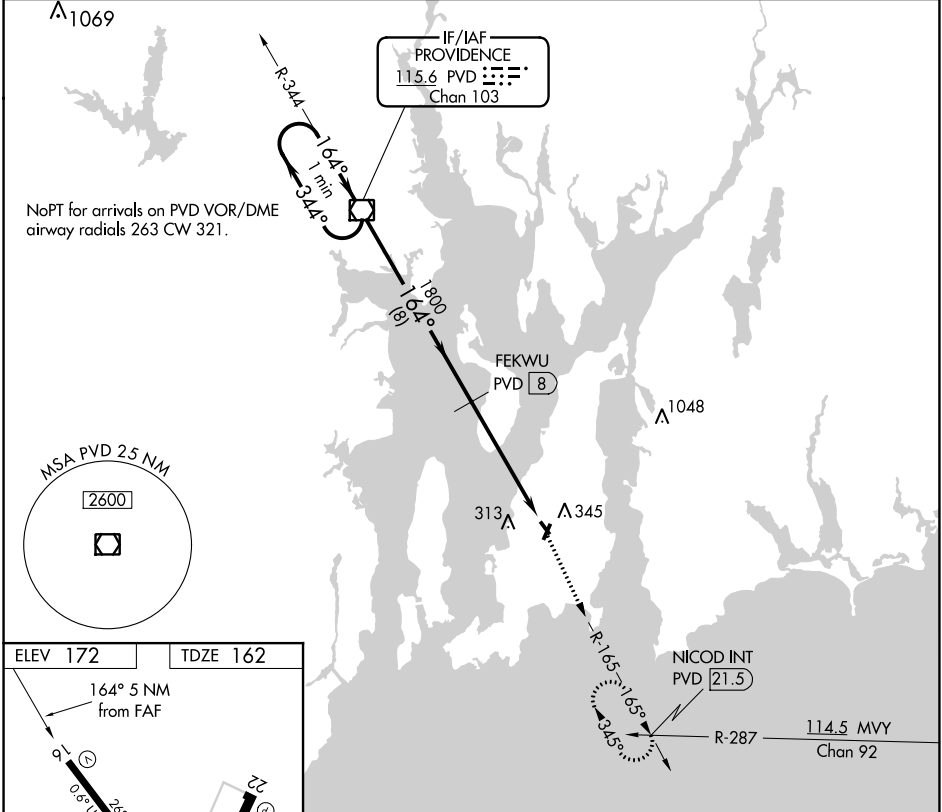
VOR/DME RWY 16

NEWPORT STATE (UUU)

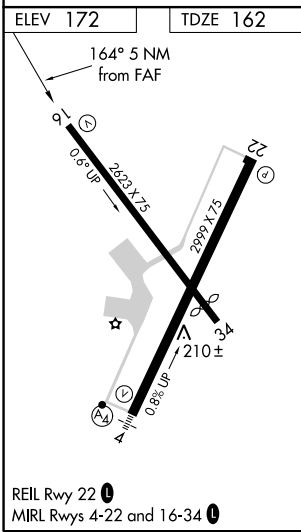
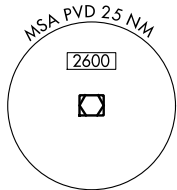
⚠ When local altimeter setting not received, use Providence altimeter setting and increase all MDA 60 feet; increase S-16 Cat C visibility ¼ mile. Circling Rwy 4, 22, 34 NA at night. Rwy 16 helicopter visibility reduction below ¾ SM NA.

MISSED APPROACH: Climb to 2100 via PVD R-165 to NICOD INT/21.5 DME and hold.

ASOS 132.075	PROVIDENCE APP CON* 128.7 269.525	CLNC DEL 127.25	UNICOM 123.05 (CTAF)
------------------------	---	---------------------------	--------------------------------



NoPT for arrivals on PVD VOR/DME airway radials 263 CW 321.



One Minute Holding Pattern	PVD VOR/DME	2100	NICOD INT	
3000 ← 344°	164° →	1800	3.04° TCH 40	
VGSI and descent angles not coincident (VGSI Angle 3.75/TCH 40).		8 NM	5 NM	
CATEGORY	A	B	C	D
S-16	680-1	518 (600-1)	680-1½ 518 (600-1½)	NA
CIRCLING	700-1	528 (600-1)	700-1½ 528 (600-1½)	NA

NE-1, 25 FEB 2021 to 25 MAR 2021

NE-1, 25 FEB 2021 to 25 MAR 2021