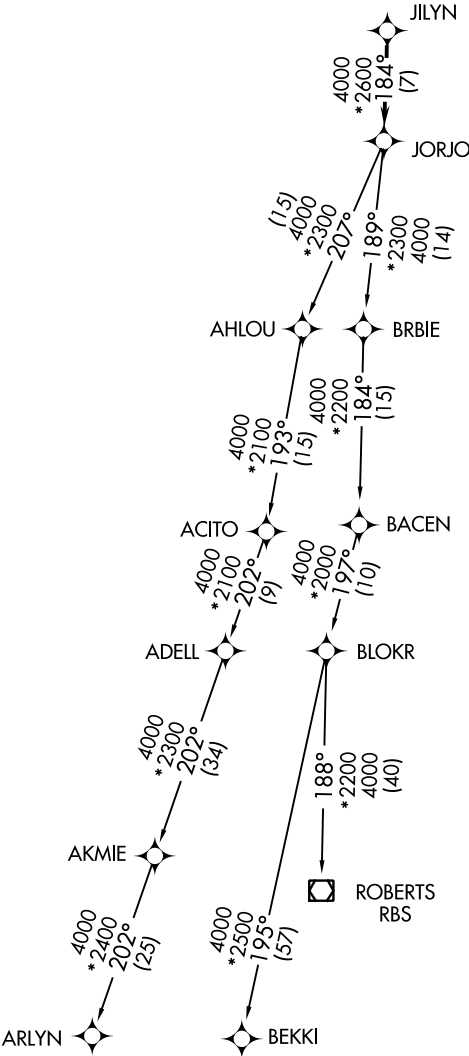
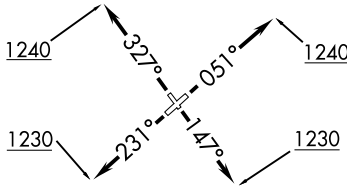


# JORJO FIVE DEPARTURE (RNAV)

ATIS  
132.4  
GND CON  
121.65  
WAUKEGAN TOWER\*  
120.05 273.55  
DEP CON  
120.55

**TOP ALTITUDE:  
3000**



### TAKEOFF MINIMUMS

Rwys 5, 32: Standard with minimum climb of 500' per NM to 1240.  
Rwys 14, 23: Standard with minimum climb of 500' per NM to 1230.

- NOTE: RNAV 1.
- NOTE: RADAR required.
- NOTE: DME/DME/IRU or GPS required.
- NOTE: TURBOJET departures maintain 250K until advised by ATC.
- NOTE: AKMIE transition: for aircraft inbound to BMI, SPI, or PIA, or as assigned by ATC.
- NOTE: ROBERTS transition: for aircraft inbound to CMI or STL, or as assigned by ATC.

(NARRATIVE ON FOLLOWING PAGE)

NOTE: Chart not to scale.

EC-3, 22 FEB 2024 to 21 MAR 2024

EC-3, 22 FEB 2024 to 21 MAR 2024

# JORJO FIVE DEPARTURE (RNAV)

# JORJO FIVE DEPARTURE (RNAV)



## DEPARTURE ROUTE DESCRIPTION

- TAKEOFF RWY 5: Climb heading 051° or as assigned by ATC to at or above 1240, expect vectors to JILYN, thence . . . .
- TAKEOFF RWY 14: Climb heading 147° or as assigned by ATC to at or above 1230, expect vectors to JILYN, thence . . . .
- TAKEOFF RWY 23: Climb heading 231° or as assigned by ATC to at or above 1230, expect vectors to JILYN, thence . . . .
- TAKEOFF RWY 32: Climb heading 327° or as assigned by ATC to at or above 1240, expect vectors to JILYN, thence . . . .

. . . . on track 184° to JORJO, then on (transition), maintain 3000, expect filed altitude ten minutes after departure.

- AKMIE TRANSITION (JORJO5.AKMIE)
- ARLYN TRANSITION (JORJO5.ARLYN)
- BEKKI TRANSITION (JORJO5.BEKKI)
- ROBERTS TRANSITION (JORJO5.RBS)

EC-3, 22 FEB 2024 to 21 MAR 2024

EC-3, 22 FEB 2024 to 21 MAR 2024

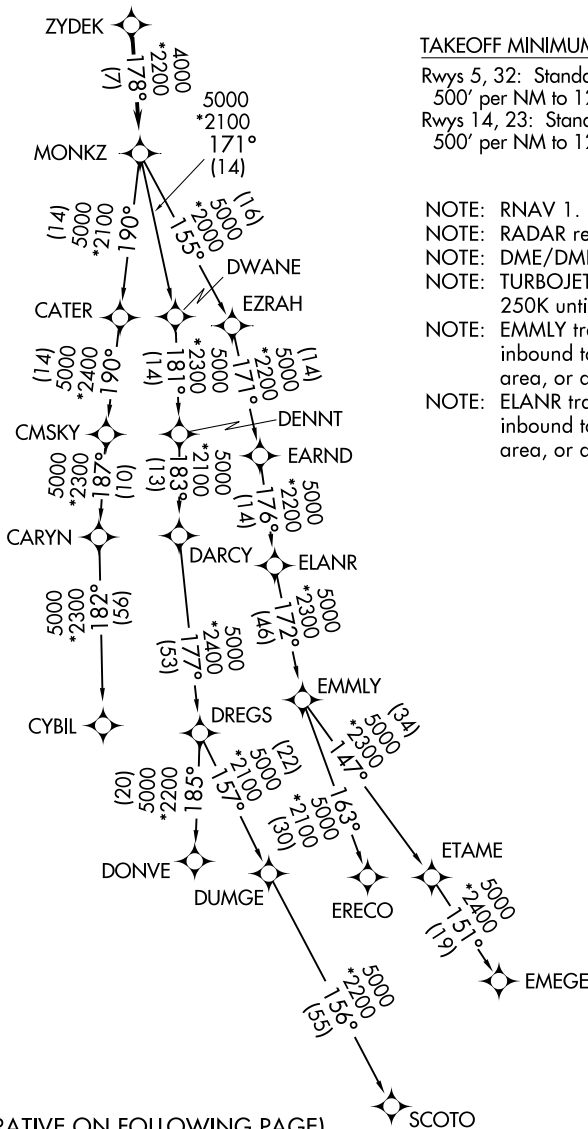
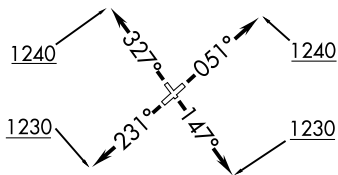
(MONKZ5.MONKZ) 21112  
**MONKZ FIVE DEPARTURE (RNAV)**

AL-5324 (FAA)

WAUKEGAN NTL (UGN)  
 CHICAGO/WAUKEGAN, ILLINOIS

**TOP ALTITUDE:  
 3000**

ATIS  
 132.4  
 GND CON  
 121.65  
 WAUKEGAN TOWER★  
 120.05 273.55  
 DEP CON  
 120.55



TAKEOFF MINIMUMS

Rwys 5, 32: Standard with minimum climb of 500' per NM to 1240.  
 Rwys 14, 23: Standard with minimum climb of 500' per NM to 1230.

- NOTE: RNAV 1.
- NOTE: RADAR required.
- NOTE: DME/DME/IRU or GPS required.
- NOTE: TURBOJET departures maintain 250K until advised by ATC.
- NOTE: EMMLY transition: For aircraft inbound to Indianapolis Terminal area, or as assigned by ATC.
- NOTE: ELANR transition: For aircraft inbound to Cincinnati Terminal area, or as assigned by ATC.

(NARRATIVE ON FOLLOWING PAGE)

NOTE: Chart not to scale.

**MONKZ FIVE DEPARTURE (RNAV)**  
 (MONKZ5.MONKZ) 01FEB18

CHICAGO/WAUKEGAN, ILLINOIS  
 WAUKEGAN NTL (UGN)

EC-3, 22 FEB 2024 to 21 MAR 2024

EC-3, 22 FEB 2024 to 21 MAR 2024

# MONKZ FIVE DEPARTURE (RNAV)



## DEPARTURE ROUTE DESCRIPTION

TAKEOFF RWY 5: Climb heading 051° or as assigned by ATC to at or above 1240, expect vectors to ZYDEK. Thence. . . .

TAKEOFF RWY 14: Climb heading 147° or as assigned by ATC to at or above 1230, expect vectors to ZYDEK. Thence. . . .

TAKEOFF RWY 23: Climb heading 231° or as assigned by ATC to at or above 1230, expect vectors to ZYDEK. Thence. . . .

TAKEOFF RWY 32: Climb heading 327° or as assigned by ATC to at or above 1240, expect vectors to ZYDEK. Thence. . . .

. . . .on track 178° to MONKZ, then on (transition), maintain 3000, expect filed altitude ten minutes after departure.

CYBIL TRANSITION (MONKZ5.CYBIL)

DONVE TRANSITION (MONKZ5.DONVE)

ELANR TRANSITION (MONKZ5.ELANR)

EMEGE TRANSITION (MONKZ5.EMEGE)

EMMLY TRANSITION (MONKZ5.EMMLY)

ERECO TRANSITION (MONKZ5.ERECO)

SCOTO TRANSITION (MONKZ5.SCOTO)

EC-3, 22 FEB 2024 to 21 MAR 2024

EC-3, 22 FEB 2024 to 21 MAR 2024