

WAAS Ch 70440 W16A	APP CRS 158°	Rwy Idg TDZE 1023 Apt Elev 1023	4099
----------------------------------------	------------------------	-----------------------------------------------------	-------------

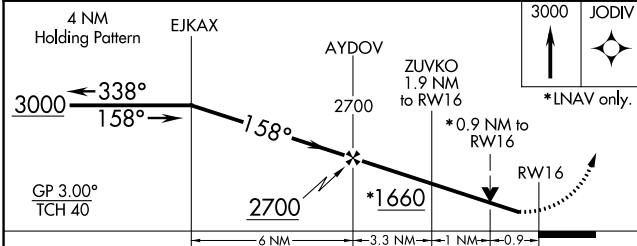
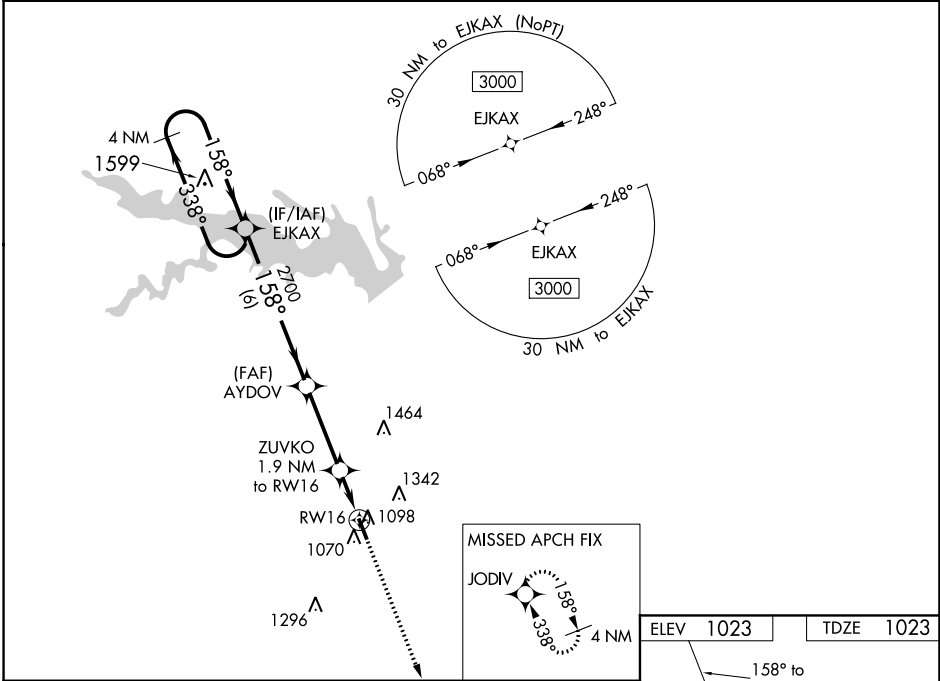
RNAV (GPS) RWY 16

CENTERVILLE MUNI (TVK)

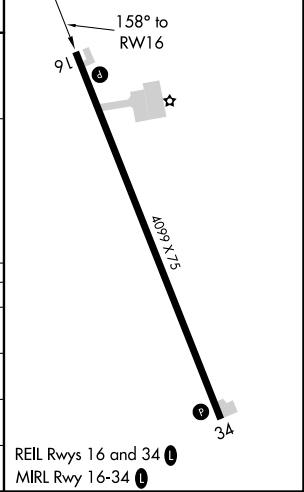
⚠ For uncompensated Baro-VNAV systems, LNAV/VNAV NA below -17°C (2°F) or above 54°C (130°F). DME/DME RNP-0.3 NA. Rwy 16 helicopter visibility reduction below ¾ SM NA. Baro-VNAV and VDP NA when using Chariton altimeter setting. When local altimeter setting not received, use Chariton altimeter setting and increase all DA 71 feet and all visibilities ¼ SM and all MDA 80 feet.

MISSED APPROACH: Climb to 3000 direct JODIV and hold.

AWOS-3 123.775	CHICAGO CENTER 118.15 335.575	UNICOM 122.8 (CTAF) 0
--------------------------	-----------------------------------------	---------------------------------



ELEV	1023	TDZE	1023
------	------	------	------



CATEGORY	A	B	C	D
LPV DA	1273-1	250 (300-1)		NA
LNAV/ DA VNAV	1273-1	250 (300-1)		NA
LNAV MDA	1360-1	337 (400-1)		NA
C CIRCLING	1420-1 397 (400-1)	1480-1 457 (500-1)		NA

NC-3, 07 OCT 2021 to 04 NOV 2021

NC-3, 07 OCT 2021 to 04 NOV 2021

WAAS CH 86517 W34A	APP CRS 338°	Rwy Idg TDZE 1023 Apt Elev 1023	4099
----------------------------------------	------------------------	-----------------------------------------------------	-------------

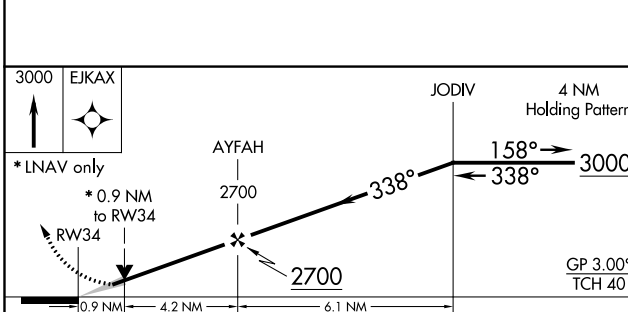
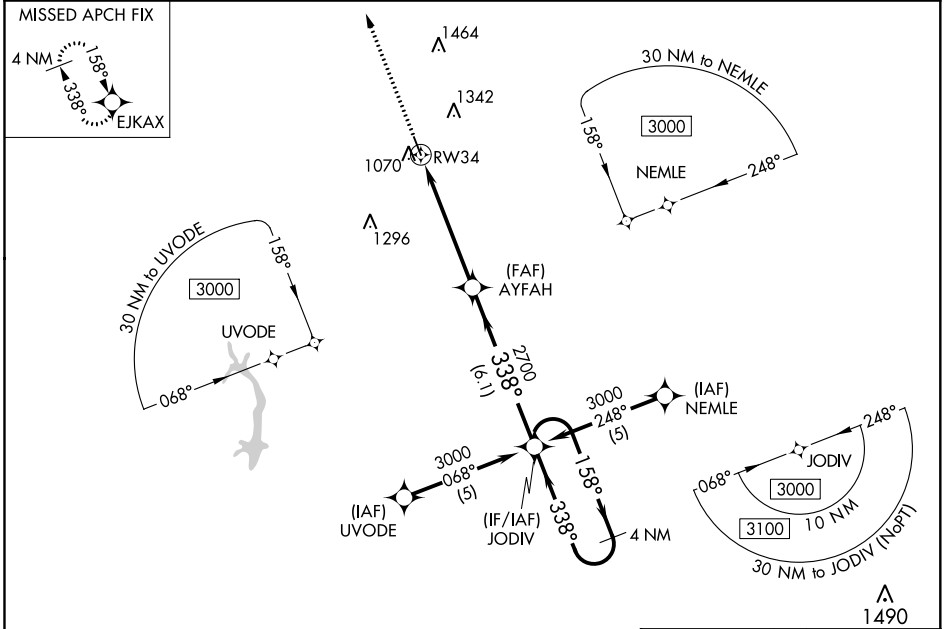
RNAV (GPS) RWY 34

CENTERVILLE MUNI (TVK)

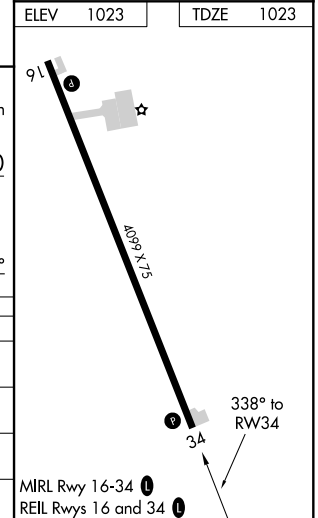
▼ For uncompensated Baro-VNAV systems, LNAV/VNAV NA below -17°C (2°F) or above 46°C (114°F).
▲ DME/DME RNP-0.3 NA. Baro-VNAV and VDP NA when using Chariton altimeter setting. When local altimeter setting not received, use Chariton altimeter setting and increase all DA 71 feet and all MDA 80 feet. Increase LPV and LNAV/VNAV all Cals visibility ¼ SM.

MISSED APPROACH:
Climb to 3000 direct
EJKAX and hold.

AWOS-3 123.775	CHICAGO CENTER 118.15 335,575	UNICOM 122.8 (CTAF) ①
--------------------------	-----------------------------------------	---------------------------------



CATEGORY	A	B	C	D
LPV DA	1273-1	250 (300-1)		NA
LNAV/VNAV DA	1349-1¼	326 (400-1¼)		NA
LNAV MDA	1500-1	477 (500-1)		NA
C CIRCLING	1500-1	477 (500-1)		NA



NC-3, 07 OCT 2021 to 04 NOV 2021

NC-3, 07 OCT 2021 to 04 NOV 2021