

APP CRS **135°**  
 Rwy Idg **3901**  
 TDZE **265**  
 Apt Elev **265**

# RNAV (GPS) RWY 13

MEFFORD FLD (TLR)

RNP APCH.

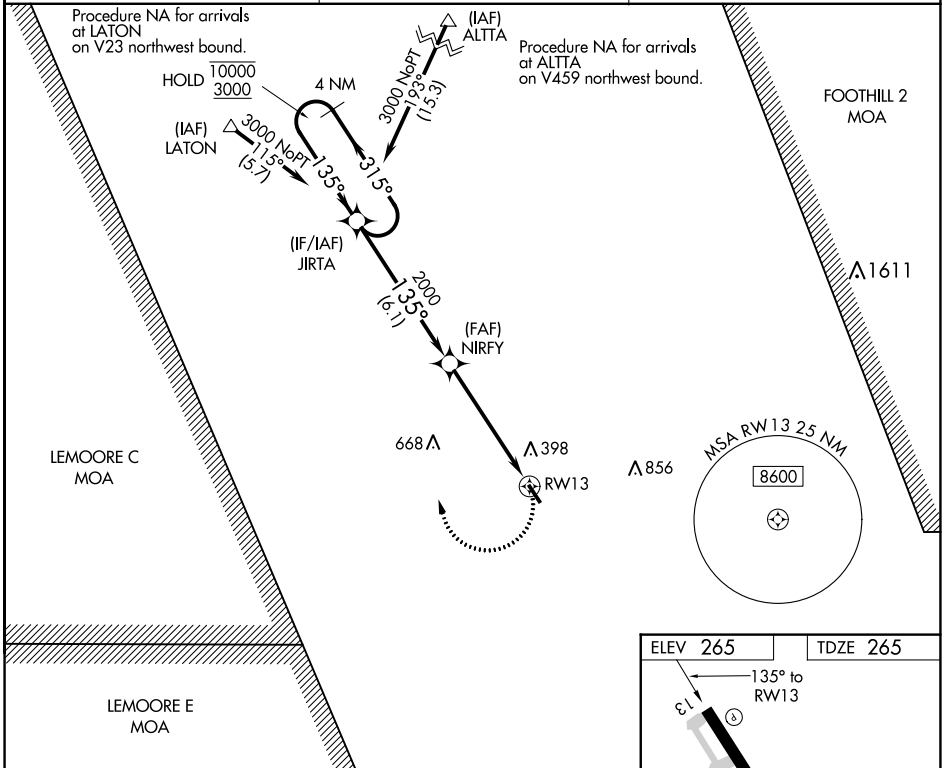
**⚠** Circling Rwy 31 NA at night. Rwy 13 helicopter visibility reduction below 3/4 SM NA. When local altimeter setting not received, use Visalia altimeter setting and increase all MDA 40 feet.

**MISSED APPROACH:** Climbing right turn to 3000 direct JIRTA and hold, Continue climb-in-hold to 3000.

AWOS-3PT  
**120.0**

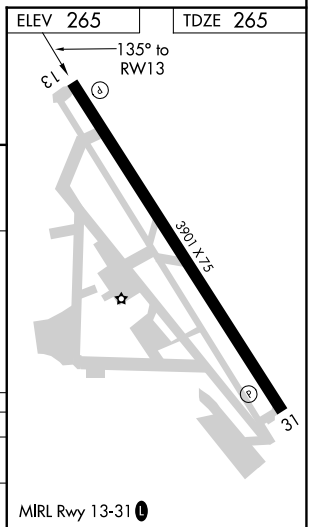
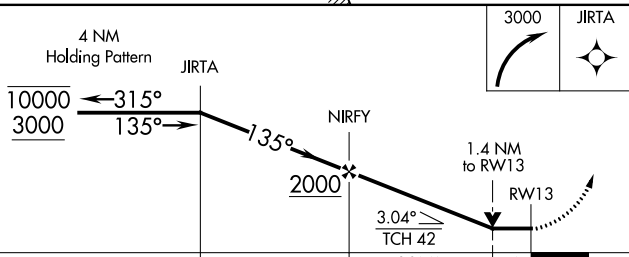
FRESNO APP CON  
**118.5 268.7**

UNICOM  
**122.7 (CTAF)**



SW-2, 22 FEB 2024 to 21 MAR 2024

SW-2, 22 FEB 2024 to 21 MAR 2024



CATEGORY	A	B	C	D
LNVA MDA	740-1	475 (500-1)	740-1 <sup>3</sup> / <sub>8</sub> 475 (500-1 <sup>3</sup> / <sub>8</sub> )	NA
<b>C</b> CIRCLING	760-1	495 (500-1)	760-1 <sup>1</sup> / <sub>2</sub> 495 (500-1 <sup>1</sup> / <sub>2</sub> )	NA