

WAAS CH 42625 W17A	APP CRS 166°	Rwy Idg TDZE Apt Elev	5840 2364 2380
----------------------------------------	------------------------	-----------------------------	-------------------------------------------

RNAV (GPS) RWY 17

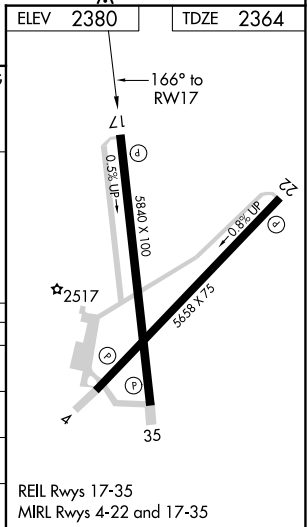
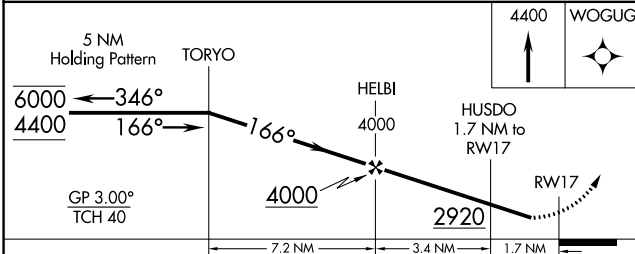
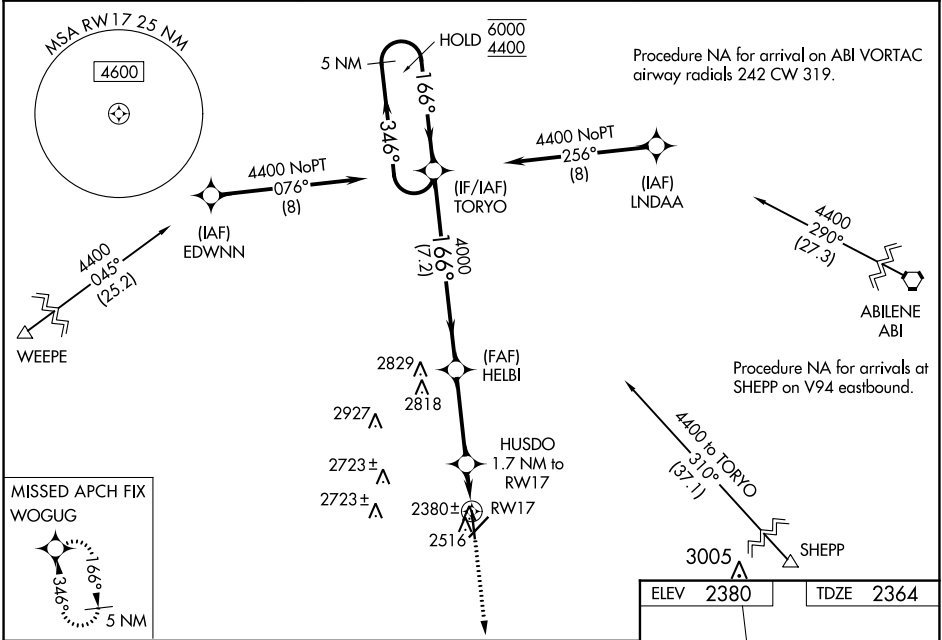
AVENGER FLD (SWW)

RNP APCH - GPS.

▼ Rwy 17 helicopter visibility reduction below 1 SM NA.
 ▲ For uncompensated Baro-VNAV systems, LNAV/VNAV NA below -19°C or above 54°C. Straight-in Rwy 17 and Circling Rwy 17, 22 NA at night.

MISSED APPROACH: Climb to 4400 direct WOGUG and hold.

AWOS-3 119.025	ABILENE APP CON 127.2 282.3	UNICOM 122.8 (CTAF)
--------------------------	---------------------------------------	-------------------------------



CATEGORY	A	B	C	D
LPV DA		2614-1	250 (300-1)	
LNAV/VNAV DA		2619-1	255 (300-1)	
LNAV MDA		2680-1	316 (300-1)	
C CIRCLING	2880-1	500 (500-1)	3080-2 700 (700-2)	3080-2 1/4 700 (700-2 1/4)

SC-2, 22 FEB 2024 to 21 MAR 2024

SC-2, 22 FEB 2024 to 21 MAR 2024

WAAS CH 49125 W22A	APP CRS 215°	Rwy Idg TDZE Apt Elev	5658 2355 2380
----------------------------------------	------------------------	-----------------------------	-------------------------------------------

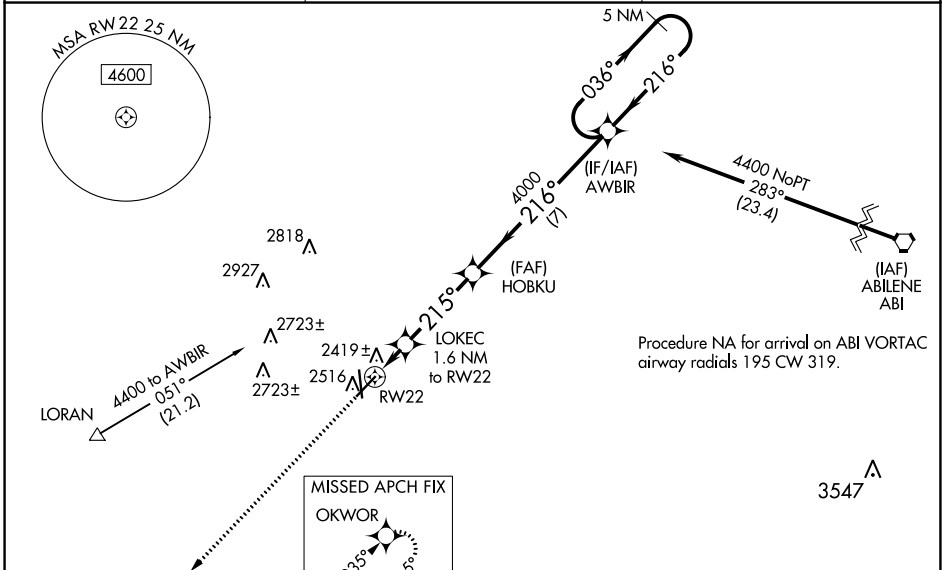
RNAV (GPS) RWY 22

AVENGER FLD (SWW)

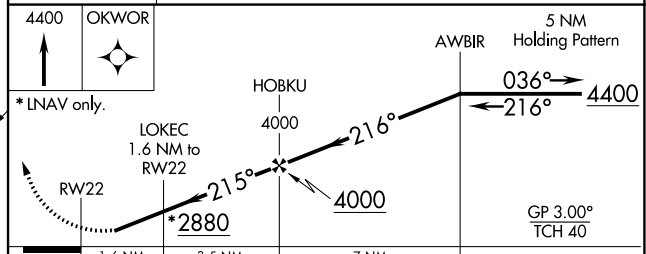
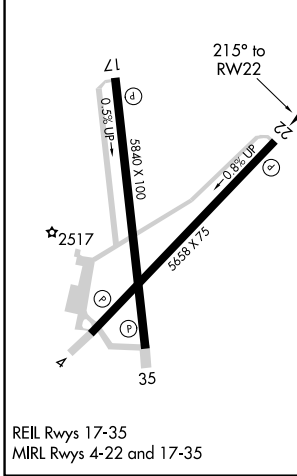
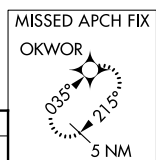
⚠ When VGSi inop, Circling Rwy 17 and 22 NA at night. Baro-VNAV NA when using Snyder altimeter setting. For uncompensated Baro-VNAV systems, LNAV/VNAV NA below -19°C (-2°F) or above 29°C (84°F). When VGSi inop, Straight in/Circling Rwy 22 procedure NA at night. DME/DME RNP-0.3 NA. Visibility reduction by helicopters NA. When local altimeter setting not received, use Snyder altimeter setting and increase LPV and LNAV/VNAV DA to 2677 feet, increase all MDAs 80 feet; increase LPV and LNAV/VNAV visibility all Cats 1/8 SM, LNAV visibility Cats C and D and Circling Cat C and D visibility 1/4 SM.

MISSED APPROACH:
Climb to 4400 direct OKWOR and hold.

AWOS-3 119.025	ABILENE APP CON 127.2 282.3	UNICOM 122.8 (CTAF)
--------------------------	---------------------------------------	-------------------------------



ELEV 2380	TDZE 2355
-----------	-----------



CATEGORY	A	B	C	D
LPV DA		2605-1	250 (300-1)	
LNAV/VNAV DA		2605-1	250 (300-1)	
LNAV MDA		2680-1	325 (300-1)	
CIRCLING	2880-1	500 (500-1)	3080-2 700 (700-2)	3080-2 1/4 700 (700-2 1/4)

SC-2, 22 FEB 2024 to 21 MAR 2024

SC-2, 22 FEB 2024 to 21 MAR 2024

WAAS CH 78225 W35A	APP CRS 346°	Rwy Idg TDZE 2355 Apt Elev 2380
----------------------------------------	------------------------	-----------------------------------------------------

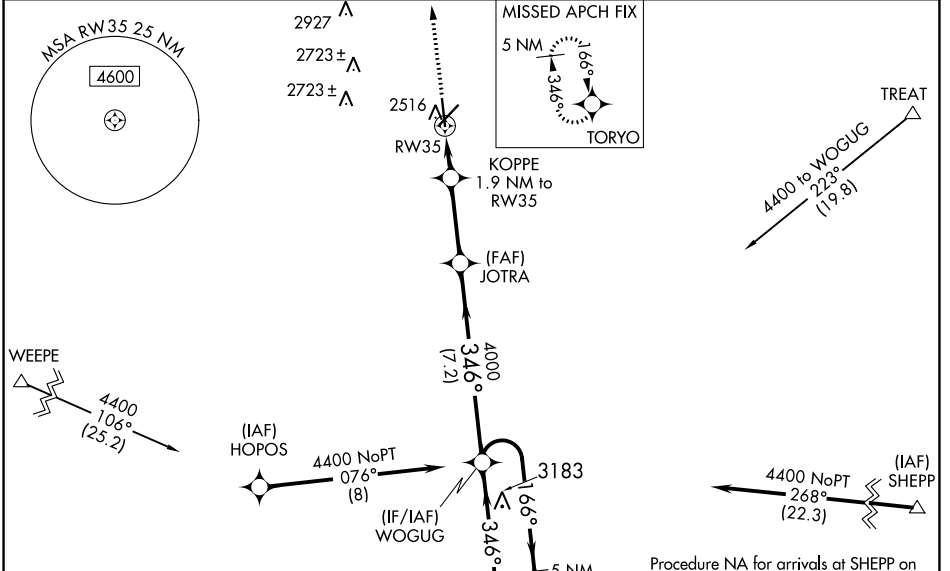
RNAV (GPS) RWY 35

AVENGER FLD (SWW)

⚠ When VGSI inop, Circling Rwy 17 and 22 NA at night. Baro-VNAV NA when using Snyder altimeter setting. For uncompensated Baro-VNAV systems, LNAV/VNAV NA below -19°C (-2°F) or above 29°C (84°F). When VGSI inop, Straight-in/Circling Rwy 35 NA at night. DME/DME RNP-0.3 NA. Visibility reduction by helicopters NA. When local altimeter setting not received, use Snyder altimeter setting and increase LPV DA to 2677 feet, LNAV/VNAV DA to 2785 feet, and all MDAs 80 feet; increase LNAV/VNAV visibility all Cats ¼ SM, LNAV visibility Cats C and D ½ SM, and Circling Cat C and D visibility ¼ SM.

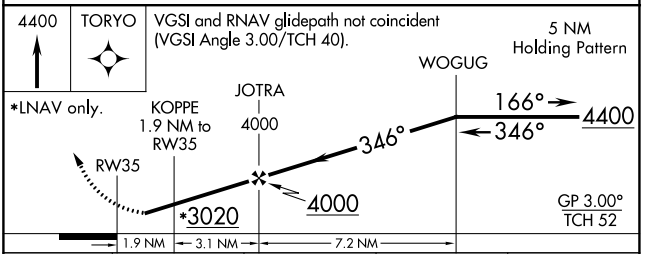
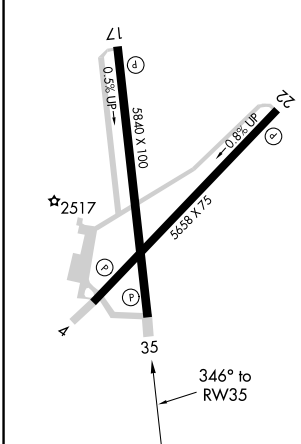
MISSED APPROACH:
Climb to 4400 direct TORYO and hold.

AWOS-3 119.025	ABILENE APP CON 127.2 282.3	UNICOM 122.8 (CTAF)
--------------------------	---------------------------------------	-------------------------------



ELEV 2380	TDZE 2355
------------------	------------------

REIL Rwy 17-35
MIRL Rwy 4-22 and 17-35



CATEGORY	A	B	C	D
LPV DA		2605-1	250 (300-1)	
LNAV/VNAV DA		2713-1½	358 (400-1½)	
LNAV MDA	2820-1	465 (500-1)	2820-1¾	465 (500-1¾)
CIRCLING	2880-1	500 (500-1)	3080-2 700 (700-2)	3080-2¼ 700 (700-2¼)

SC-2, 22 FEB 2024 to 21 MAR 2024

SC-2, 22 FEB 2024 to 21 MAR 2024

