

APP CRS	Rwy Idg	<b>4671</b>
<b>221°</b>	TDZE	<b>17</b>
	Apt Elev	<b>19</b>

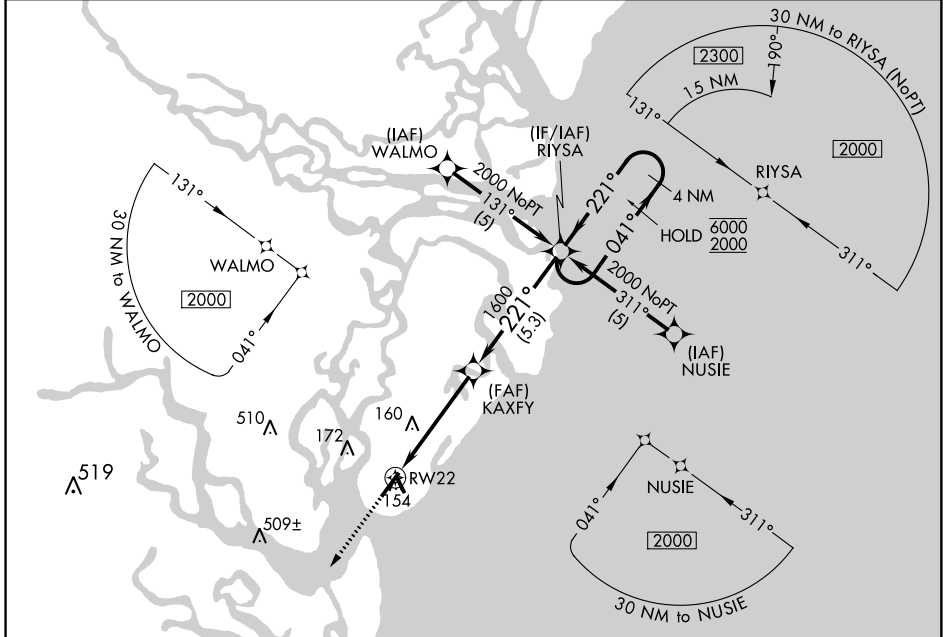
# RNAV (GPS) RWY 22

ST SIMONS ISLAND (SSI)

RNP APCH.  
 ▽ Straight-in Rwy 22 NA at night, Circling Rwy 16, 22, 34 NA at night. Rwy 22 helicopter visibility reduction below 1 SM NA.

MISSED APPROACH: Climb to 2000 direct VIXRY and hold.

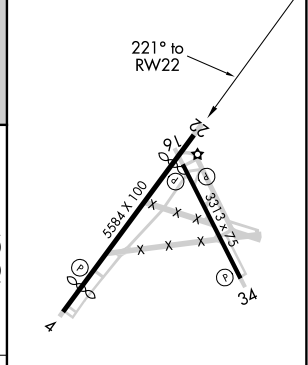
ASOS <b>120.025</b>	JACKSONVILLE CENTER <b>126.75 277.4</b>	UNICOM <b>123.05 (CTAF) ①</b>
------------------------	--	----------------------------------



SE-4, 27 FEB 2020 to 26 MAR 2020

SE-4, 27 FEB 2020 to 26 MAR 2020

ELEV 19	TDZE 17
---------	---------



2000	VIXRY	VGSI and descent angles not coincident (VGSI Angle 4.00/TCH 54).
------	-------	--

CATEGORY	A	B	C	D
LNVA MDA	460-1	443 (500-1)	460-1½ 443 (500-1½)	460-1½ 443 (500-1½)
CIRCLING	460-1 441 (500-1)	480-1 461 (500-1)	480-1½ 461 (500-1½)	580-2 561 (600-2)

MIRL all Rwys ①

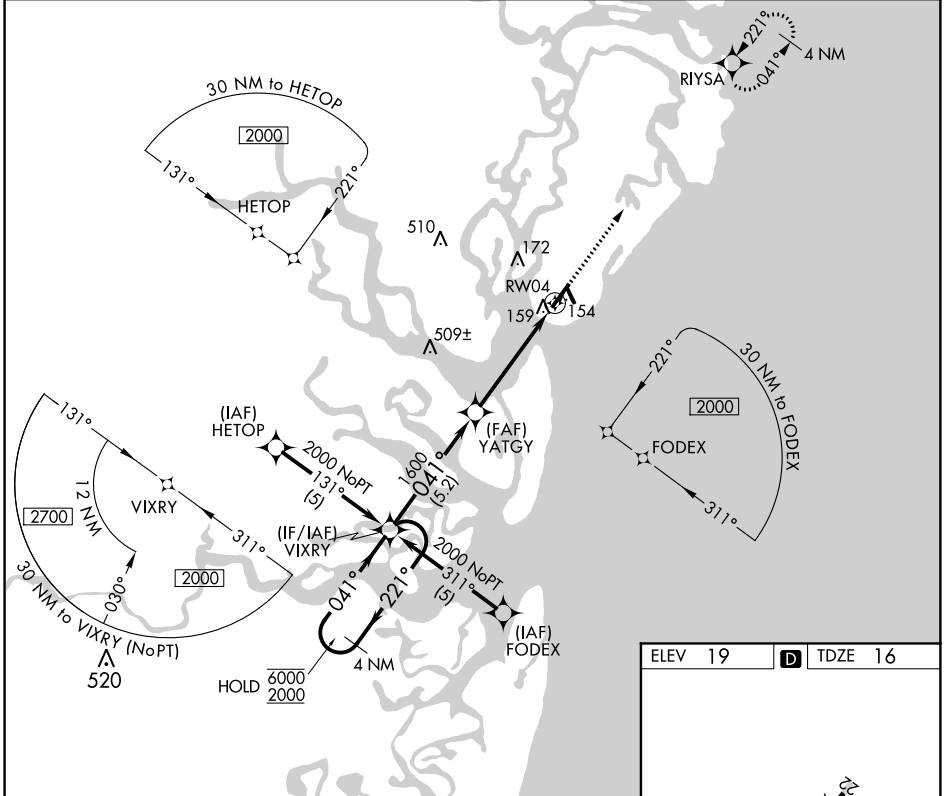
APP CRS	Rwy Idg	<b>4798</b>
<b>041°</b>	TDZE	<b>16</b>
	Apt Elev	<b>19</b>

# RNAV (GPS) RWY 4

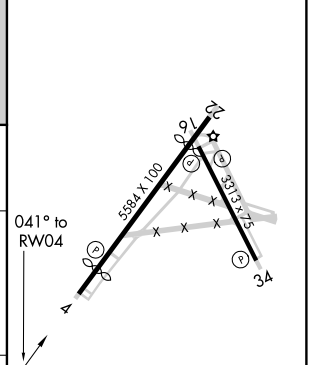
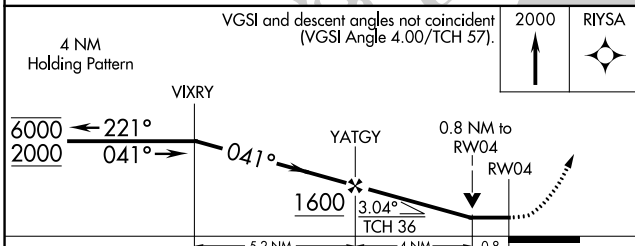
ST SIMONS ISLAND (SSI)

RNP APCH.	MISSED APPROACH: Climb to 2000 direct RIYSA and hold.
Rwy 4 helicopter visibility reduction below 3/4 SM NA. Circling Rwy 16, 22, 34 NA at night.	

ASOS <b>120.025</b>	JACKSONVILLE CENTER <b>126.75 277.4</b>	UNICOM <b>123.05 (CTAF) 1</b>
------------------------	--	----------------------------------



ELEV 19	<b>D</b> TDZE 16
---------	------------------



CATEGORY	A	B	C	D
LNNAV MDA	420-1	404 (500-1)	420-1 1/4	404 (500-1 1/4)
CIRCLING	460-1 441 (500-1)	480-1 461 (500-1)	480-1 1/2 461 (500-1 1/2)	580-2 561 (600-2)

MIRL all Rwys 1

SE-4, 27 FEB 2020 to 26 MAR 2020

SE-4, 27 FEB 2020 to 26 MAR 2020

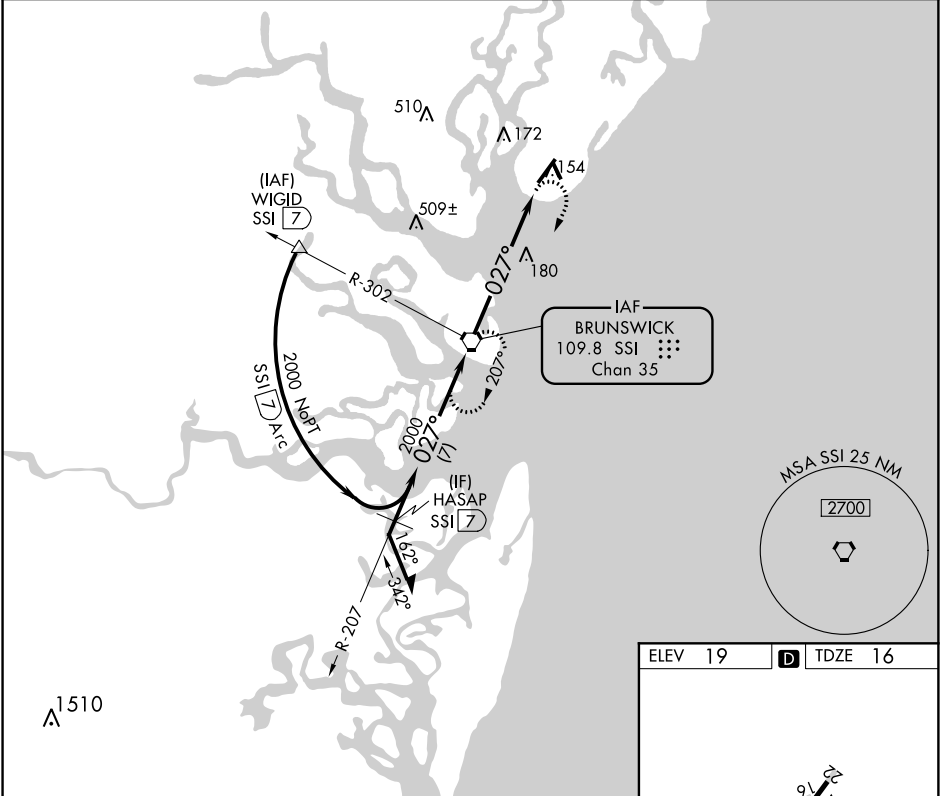
VORTAC SSI <b>109.8</b> Chan <b>35</b>	APP CRS <b>027°</b>	Rwy Idg TDZE Apt Elev	<b>4798</b> <b>16</b> <b>19</b>
--	------------------------	-----------------------------	---------------------------------------

**VOR RWY 4**  
ST SIMONS ISLAND (SSI)

**▼** Rwy 4 helicopter visibility reduction below 3/4 SM NA. Circling Rwy 16, 22, 34 NA at night.

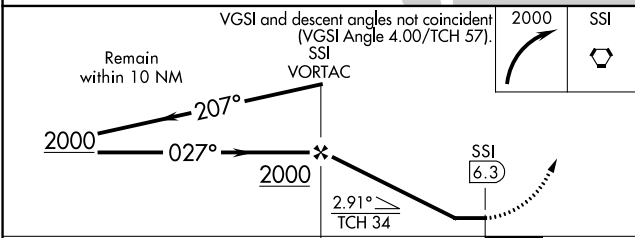
**MISSED APPROACH:** Climbing right turn to 2000 direct SSI VORTAC and hold.

ASOS <b>120.025</b>	JACKSONVILLE CENTER <b>126.75 277.4</b>	UNICOM <b>123.05 (CTAF) 0</b>
------------------------	--	----------------------------------



SE-4, 27 FEB 2020 to 26 MAR 2020

SE-4, 27 FEB 2020 to 26 MAR 2020



ELEV 19	<b>D</b> TDZE 16
---------	------------------

027° 6.3 NM from FAF

MIRL all Rwys 0

FAF to MAP 6.3 NM					
Knots	60	90	120	150	180
Min:Sec	6:18	4:12	3:09	2:31	2:06

CATEGORY	A	B	C	D
S-4	500-1	484 (500-1)	500-1 3/8 484 (500-1 3/8)	500-1 1/2 484 (500-1 1/2)
CIRCLING	500-1	481 (500-1)	500-1 1/2 481 (500-1 1/2)	580-2 561 (600-2)