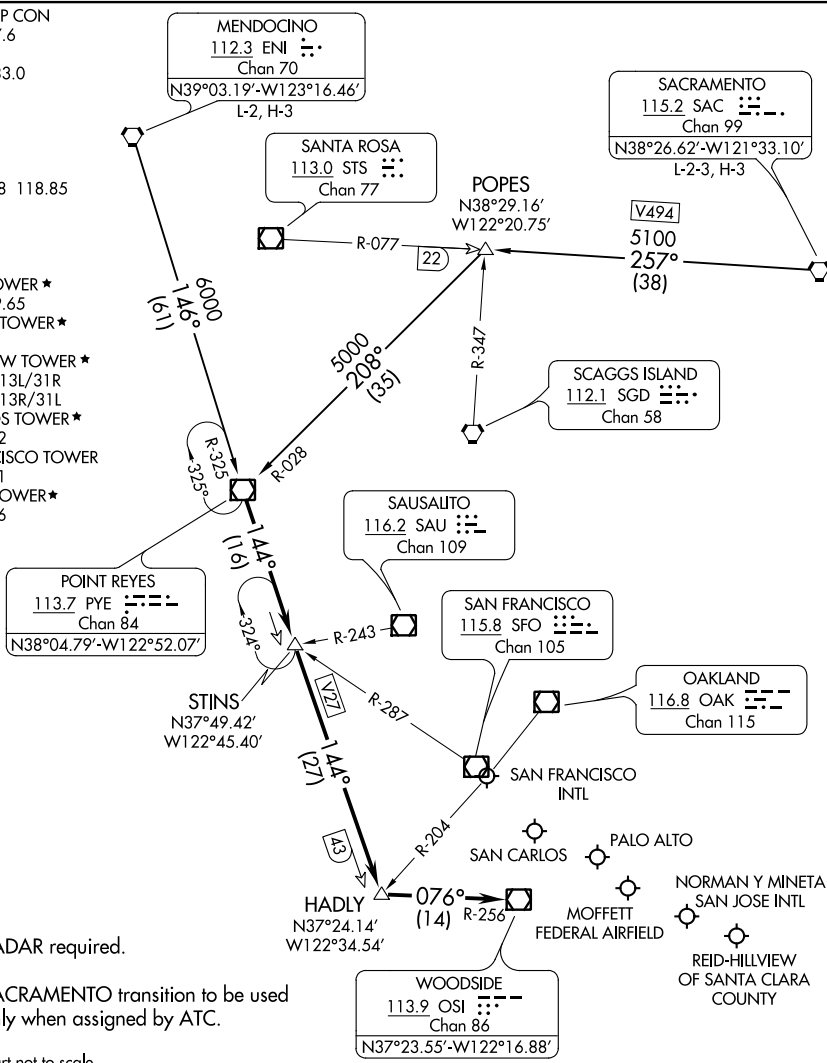


POINT REYES THREE ARRIVAL

AL-375 (FAA)

SAN FRANCISCO, CALIFORNIA

NORCAL APP CON
 133.95 317.6
 KNUQ ATIS
 124.175 283.0
 PAO ATIS
 135.275
 RHV ATIS
 125.2
 SFO D-ATIS
 113.7 115.8 118.85
 SJC D-ATIS
 126.95
 SQL ATIS
 125.9
 MOFFETT TOWER *
 119.55 259.65
 PALO ALTO TOWER *
 118.6
 REID-HILLVIEW TOWER *
 119.8 RWY 13L/31R
 126.1 RWY 13R/31L
 SAN CARLOS TOWER *
 119.0 326.2
 SAN FRANCISCO TOWER
 120.5 269.1
 SAN JOSE TOWER *
 124.0 257.6



NOTE: RADAR required.

NOTE: SACRAMENTO transition to be used only when assigned by ATC.

NOTE: Chart not to scale.

ARRIVAL ROUTE DESCRIPTION

MENDOCINO TRANSITION (ENI.PYE3): From over ENI VORTAC on ENI R-146 and PYE R-325 to PYE VOR/DME. Thence. . .

SACRAMENTO TRANSITION (SAC.PYE3): From over SAC VORTAC on SAC R-257 and PYE R-028 to PYE VOR/DME. Thence. . .

. . . From over PYE VOR/DME on PYE R-144 to HADLY, then on OSI R-256 to OSI VOR/DME. Expect RADAR vectors to final approach course.

POINT REYES THREE ARRIVAL

SAN FRANCISCO, CALIFORNIA

SW-2, 17 JUN 2021 to 15 JUL 2021

SW-2, 17 JUN 2021 to 15 JUL 2021