

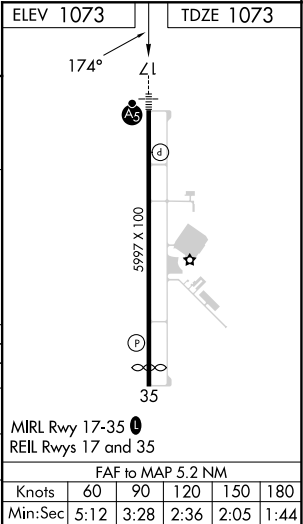
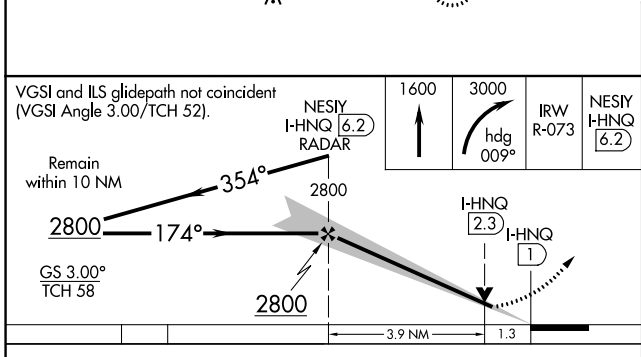
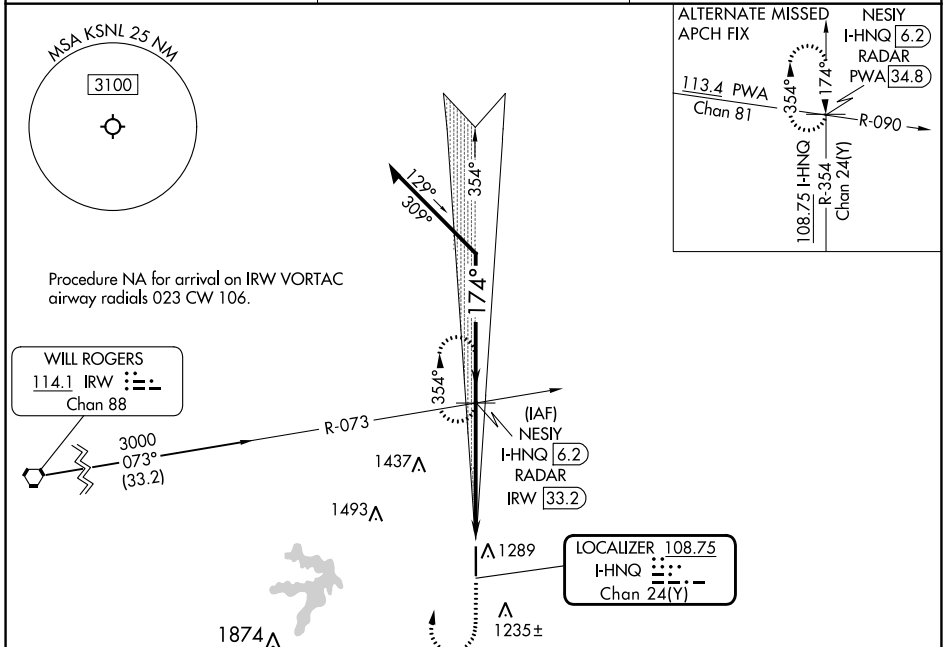
LOC/DME I-HNQ <b>108.75</b> Chan <b>24(Y)</b>	APP CRS <b>174°</b>	Rwy Idg TDZE Apt Elev <b>5997</b> <b>1073</b> <b>1073</b>
---	------------------------	--

# ILS or LOC RWY 17

SHAWNEE RGNL (SNL)

DME or RADAR required.	MALSR 	MISSED APPROACH: Climb to 1600 then climbing right turn to 3000 on heading 009° and IRW R-073 to NESIY/I-HNQ 6.2 DME/RADAR and hold, continue climb-in-hold to 3000.
------------------------	-----------	--

AWOS-3 <b>118.275</b>	OKE CITY APP CON <b>120.45 288.325</b>	UNICOM <b>122.7 (CTAF)</b>
--------------------------	---	-------------------------------



CATEGORY	A	B	C	D
S-ILS 17	1273-1/2 200 (200-1/2)			NA
S-LOC 17	1520-1/2	447 (500-1/2)	1520-7/8 447 (500-7/8)	NA
CIRCLING	1600-1 527 (600-1)		1640-1/2 567 (600-1/2)	NA

SC-1, 22 FEB 2024 to 21 MAR 2024


SC-1, 22 FEB 2024 to 21 MAR 2024

WAAS CH <b>86919</b> <b>W17A</b>	APP CRS <b>174°</b>	Rwy Idg TDZE Apt Elev	<b>5997</b> <b>1073</b> <b>1073</b>
--	------------------------	-----------------------------	---

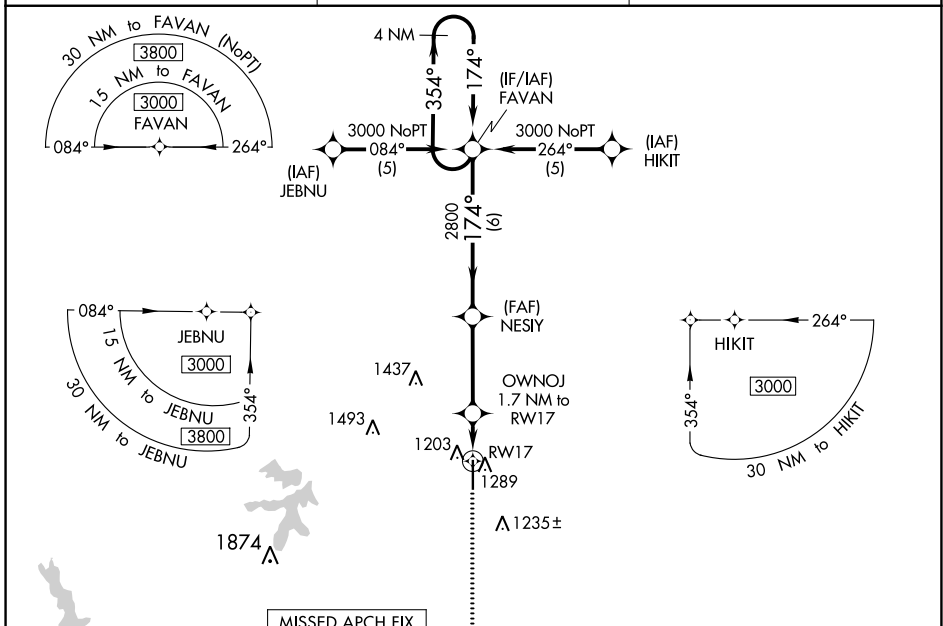
# RNAV (GPS) RWY 17



SHAWNEE RGNL (SNL)

**⚠** Baro-VNAV NA when using Seminole altimeter setting. For uncompensated Baro-VNAV systems, LNAV/VNAV NA below -17°C (2°F) or above 54°C (130°F).  
**⚠** DME/DME RNP-0.3 NA. When local altimeter setting not received, use Seminole altimeter setting: increase LPV DA to 1313 feet; increase LNAV/VNAV DA to 1487 feet and visibility ¼ SM; increase all MDAs 40 feet and visibility Cat C ¼ SM.

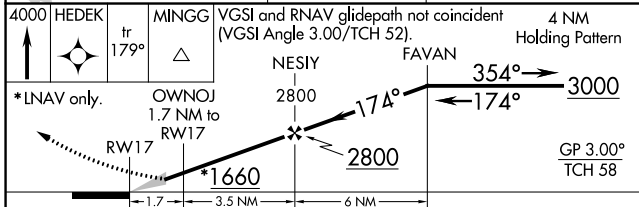
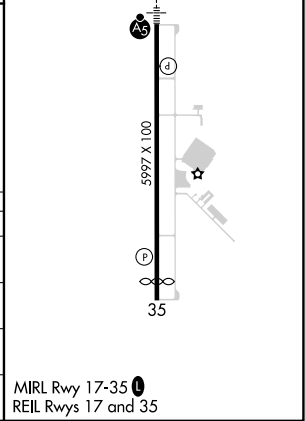
**MALSR**  MISSED APPROACH: Climb to 4000 direct HEDEK and on track 179° to MINGG and hold.

AWOS-3 <b>118.275</b>	OKE CITY APP CON <b>120.45 288.325</b>	UNICOM <b>122.7 (CTAF)</b>
--------------------------	---	-------------------------------



**4000 HEDEK**  **MINGG**   
 Ir 179°  
 \*LNAV only. OWNOJ 1.7 NM to RW17  
 NESIY 2800  
 FAVAN 3000  
 GP 3.00° TCH 58'  
 VGSi and RNAV glidepath not coincident (VGSi Angle 3.00/TCH 52).  
 4 NM Holding Pattern

ELEV 1073	TDZE 1073
-----------	-----------



CATEGORY	A	B	C	D
LPV DA	1273-½	200 (200-½)		NA
LNAV/VNAV DA	1447-¾	374 (400-¾)		NA
LNAV MDA	1540-½	467 (500-½)	1540-¾ 467 (500-¾)	NA
<b>C</b> CIRCLING	1600-1	527 (600-1)	1640-1½ 567 (600-1½)	NA

SC-1, 22 FEB 2024 to 21 MAR 2024

SC-1, 22 FEB 2024 to 21 MAR 2024

WAAS CH <b>72818</b> <b>W35A</b>	APP CRS <b>354°</b>	Rwy Idg TDZE Apt Elev	<b>5593</b> <b>1067</b> <b>1073</b>
--	------------------------	-----------------------------	---

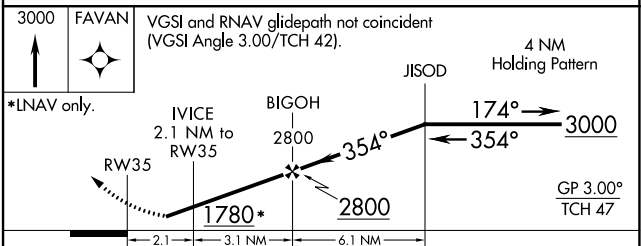
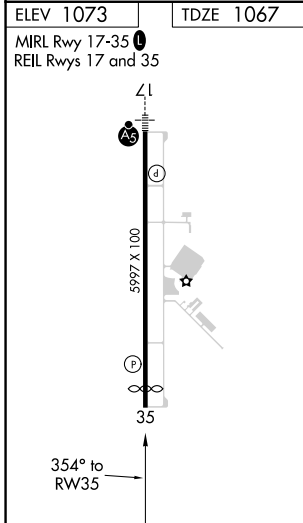
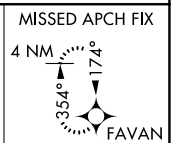
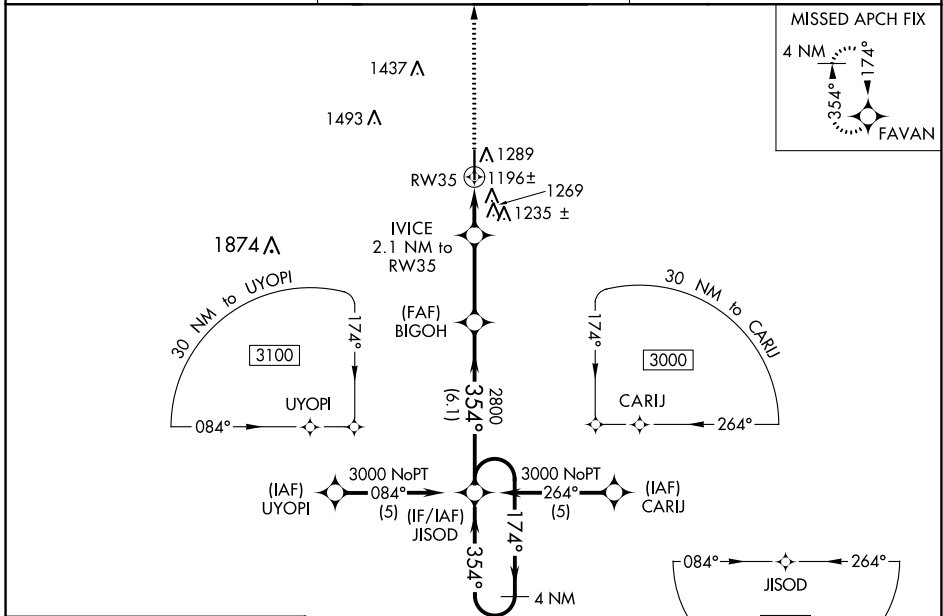
# RNAV (GPS) RWY 35

SHAWNEE RGNL (SNL)

**⚠** Baro-VNAV NA when using Seminole altimeter setting. For uncompensated Baro-VNAV systems, LNAV/VNAV NA below -17°C (2°F) or above 54°C (130°F). DME/DME RNP-0.3 NA. When local altimeter setting not received, use Seminole altimeter setting: increase LPV DA to 1357 feet; increase LNAV/VNAV DA to 1605 feet and visibility ¼ SM; increase all MDAs 40 feet and visibility Cat C ¼ SM.

**MISSED APPROACH:**  
Climb to 3000 direct FAVAN and hold.

AWOS-3 <b>118.275</b>	OKE CITY APP CON <b>120.45 288.325</b>	UNICOM <b>122.7 (CTAF)</b>
--------------------------	---	-------------------------------



CATEGORY	A	B	C	D
LPV DA		1317-1	250 (300-1)	NA
LNAV/VNAV DA		1565-1¾	498 (500-1¾)	NA
LNAV MDA	1520-1	453 (500-1)	1520-1¼ 453 (500-1¼)	NA
<b>C</b> CIRCLING	1600-1	527 (600-1)	1640-1½ 567 (600-1½)	NA

SC-1, 22 FEB 2024 to 21 MAR 2024

SC-1, 22 FEB 2024 to 21 MAR 2024