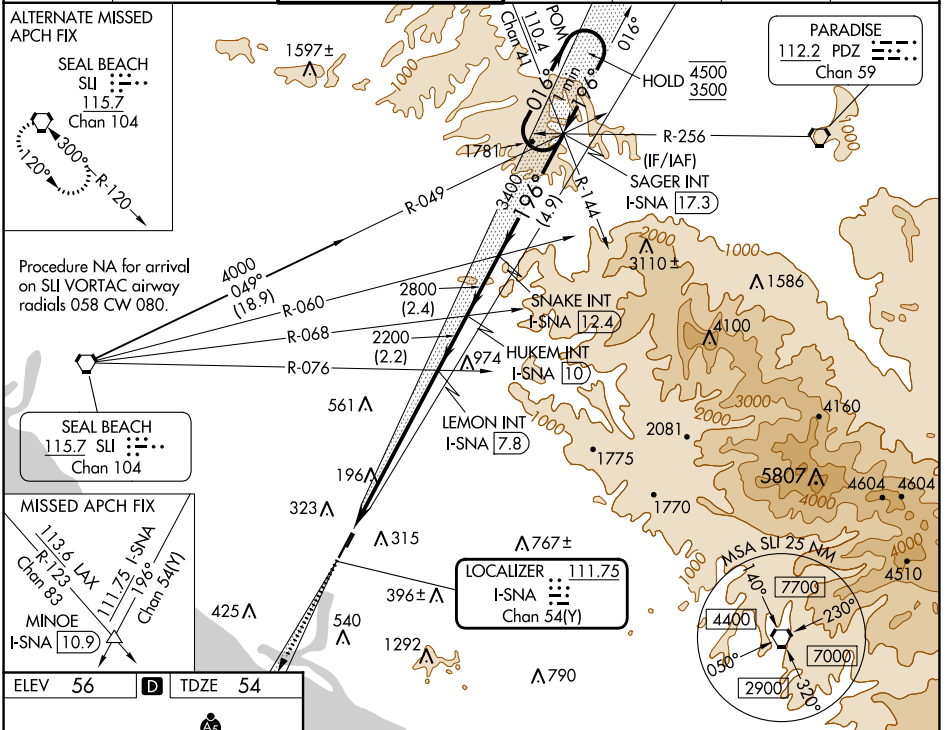


LOC/DME I-SNA 111.75 Chan 54(Y)	APP CRS 196°	Rwy Idg TDZE Apt Elev	5700 54 56
---	------------------------	-----------------------------	---------------------------------------

ILS RWY 20R (SA CAT I)

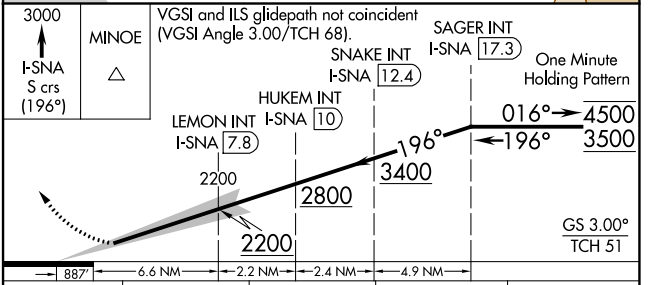
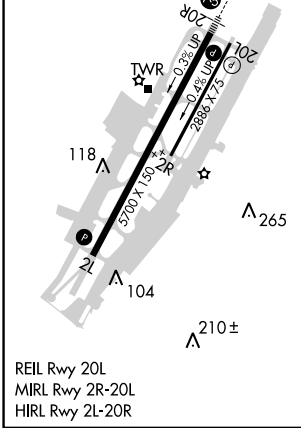
JOHN WAYNE/ORANGE COUNTY (SNA)

Requires specific OPSPEC, MSPEC, or LOA approval. Procedure NA when tower closed.		MALS R 	MISSED APPROACH: Climb to 3000 on I-SNA LOC south course (196°) to MINOE INT/I-SNA 10.9 DME.			
D-ATIS 126.0	SOCAL APP CON 121.3 263.1	JOHN WAYNE TOWER * 126.8 (CTAF) 0 343.625	GND CON 120.8	CLNC DEL 118.0	CPDLC	UNICOM 122.95



SW-3, 22 FEB 2024 to 21 MAR 2024

SW-3, 22 FEB 2024 to 21 MAR 2024



CATEGORY	A	B	C	D
S-ILS 20R	RA 201/14 167 DA 221			

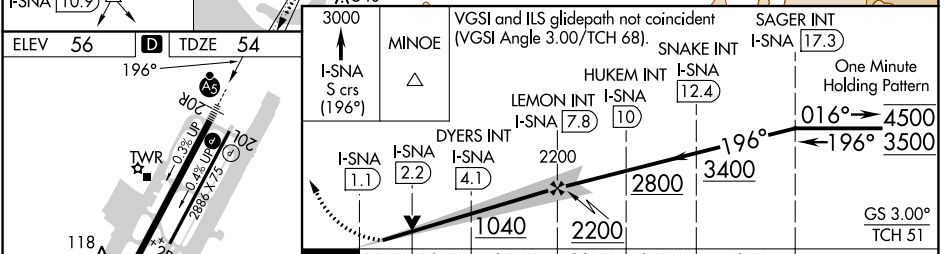
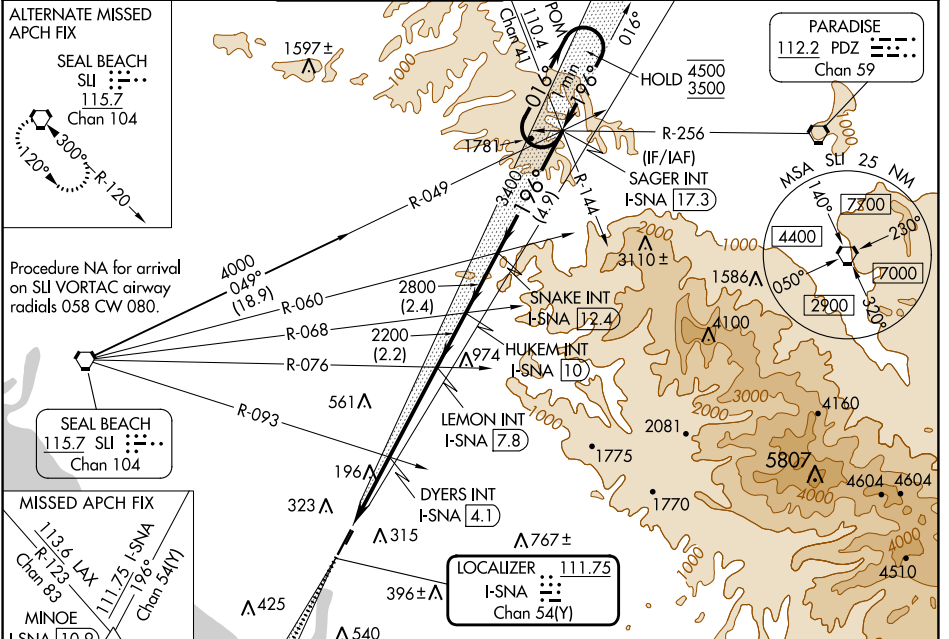
SA CATEGORY I ILS - SPECIAL AIRCREW & AIRCRAFT CERTIFICATION REQUIRED

LOC/DME I-SNA 111.75 Chan 54(Y)	APP CRS 196°	Rwy Idg TDZE Apt Elev	5700 54 56
---	------------------------	-----------------------------	---------------------------------------

ILS or LOC RWY 20R

JOHN WAYNE/ORANGE COUNTY (SNA)

	MALSR 	MISSED APPROACH: Climb to 3000 on I-SNA LOC south course (196°) to MINOE INT/I-SNA 10.9 DME.				
	D-ATIS 126.0	SOCAL APP CON 121.3 263.1	JOHN WAYNE TOWER ★ 126.8 (CTAF) 343.625	GND CON 120.8	CLNC DEL 118.0	CPDLC



ELEV 56	TDZE 54	MINOE I-SNA S crs (196°)		VGSi and ILS glidepath not coincident (VGSi Angle 3.00°/TCH 68).		SAGER INT I-SNA 17.3	
						One Minute Holding Pattern	
						GS 3.00° TCH 51	
CATEGORY		A		B		C	
S-ILS 20R*		255/24		201 (200-½)			
S-LOC 20R		1040/40 986 (1000-¾)		1040/55 986 (1000-1)		1040-2½ 986 (1000-2½)	
CIRCLING		1040-1¼ 984 (1000-1¼)		1040-1½ 984 (1000-½)		1040-3 1160-3 1104 (1200-3)	
DYERS FIX MINIMUMS (DUAL VOR RECEIVERS OR DME REQUIRED)							
S-LOC 20R		460/24 406 (500-½)		460/40 406 (500-¾)			
CIRCLING		640-1 584 (600-1)		840-2¼ 784 (800-2¼)		1160-3 1104 (1200-3)	

SW-3, 22 FEB 2024 to 21 MAR 2024

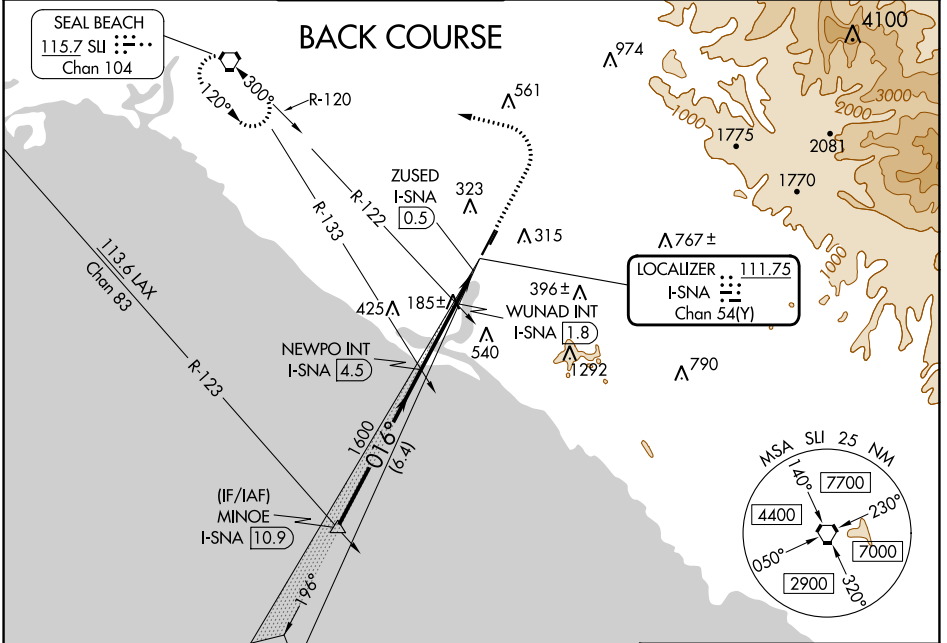
SW-3, 22 FEB 2024 to 21 MAR 2024

LOC/DME I-SNA 111.75 Chan 54(Y)	APP CRS 016°	Rwy Idg TDZE Apt Elev	5700 56 56
--	------------------------	-----------------------------	---------------------------------------

LOC BC RWY 2L
JOHN WAYNE/ORANGE COUNTY (SNA)

Circling Rwy 20L NA at night.		MISSED APPROACH: Climb to 800 then climbing left turn to 2600 direct SLI VORTAC and hold.			
-------------------------------	--	---	--	--	--

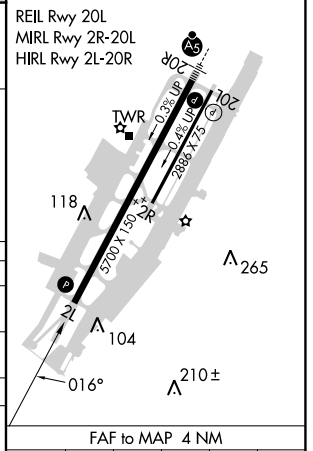
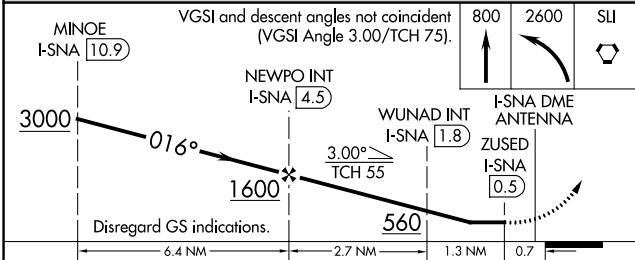
D-ATIS 126.0	SOCAL APP CON 121.3 263.1	JOHN WAYNE TOWER * 126.8 (CTAF) 343.625	GND CON 120.8	CLNC DEL 118.0	CPDLC	UNICOM 122.95
------------------------	-------------------------------------	--	-------------------------	--------------------------	-------	-------------------------



SW-3, 22 FEB 2024 to 21 MAR 2024

SW-3, 22 FEB 2024 to 21 MAR 2024

ELEV 56	TDZE 56
---------	---------



CATEGORY	A	B	C	D
S-LOC 2L	560-1	504 (600-1)	560-1 3/8	504 (600-1 3/8)
CIRCLING	640-1	584 (600-1)	840-2 1/4 784 (800-2 1/4)	1160-3 1104 (1200-3)
WUNAD FIX MINIMUMS (DUAL VOR RECEIVERS OR DME REQUIRED)				
S-LOC 2L	480-1	424 (500-1)	480-1 1/4	424 (500-1 1/4)
CIRCLING	640-1	584 (600-1)	840-2 1/4 784 (800-2 1/4)	1160-3 1104 (1200-3)

FAF to MAP 4 NM	Knots	60	90	120	150	180
	Min:Sec	4:00	2:40	2:00	1:36	1:20

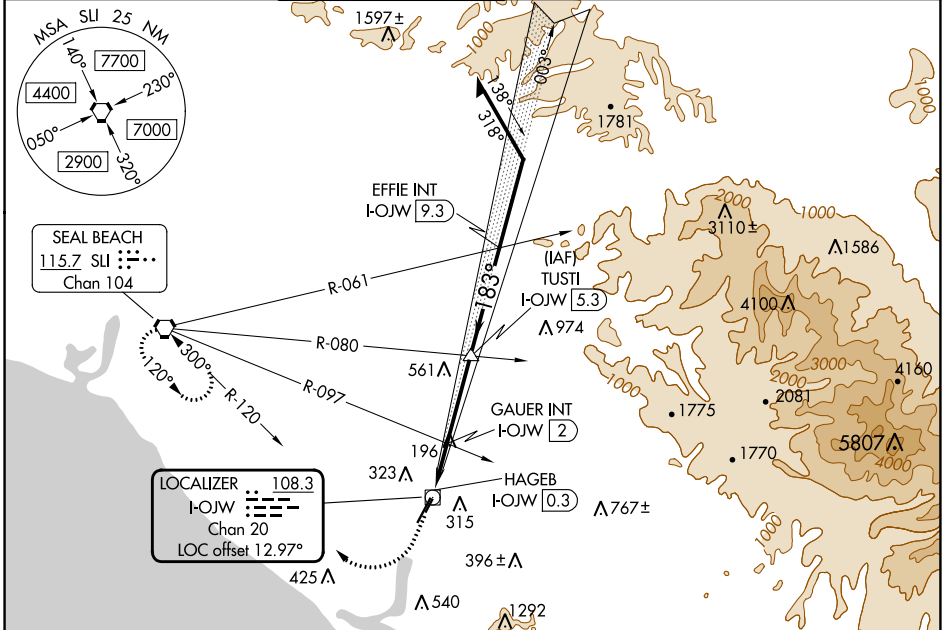
LOC/DME I-OJW 108.3 Chan 20	APP CRS 183°	Rwy Idg TDZE 54 Apt Elev 56
--	------------------------	---

LDA RWY 20R

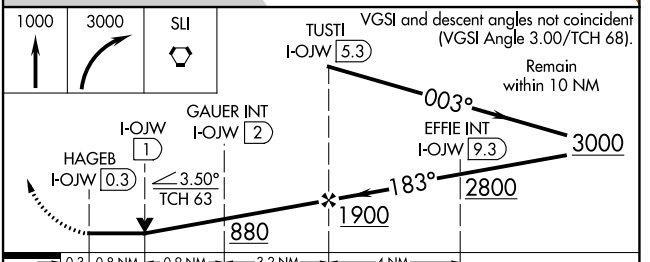
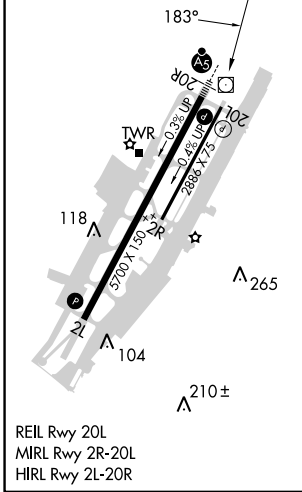
JOHN WAYNE/ORANGE COUNTY (SNA)

DME required.		MALSR AS	MISSED APPROACH: Climb to 1000 then climbing right turn to 3000 direct SLI VORTAC and hold.
▼ Circling Rwy 20L NA at night. For inop ALS, increase S-LDA 20R Cat C/D visibility to RVR 6000.			

D-ATIS 126.0	SOCAL APP CON 121.3 263.1	JOHN WAYNE TOWER ★ 126.8 (CTAF) 0 343.625	GND CON 120.8	CLNC DEL 118.0	CPDLC	UNICOM 122.95
------------------------	-------------------------------------	--	-------------------------	--------------------------	-------	-------------------------



ELEV 56	D	TDZE 54
---------	----------	---------



CATEGORY	A	B	C	D
S-LDA 20R	460/24	406 (500-½)	460/40	406 (500-¾)
C CIRCLING	640-1	584 (600-1)	840-2¼ 784 (800-2¼)	1160-3 1104 (1200-3)

SW-3, 22 FEB 2024 to 21 MAR 2024

SW-3, 22 FEB 2024 to 21 MAR 2024

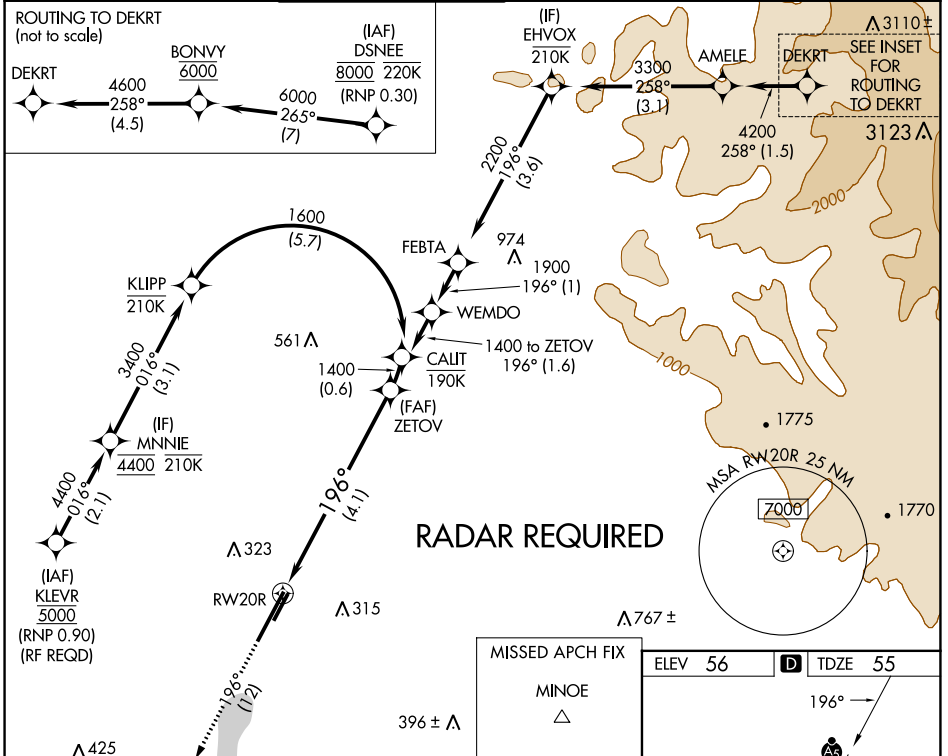
APP CRS	Rwy Idg	5700
196°	TDZE	55
	Apt Elev	56

RNAV (RNP) Z RWY 20R

JOHN WAYNE/ORANGE COUNTY (SNA)

For uncompensated Baro-VNAV systems, procedure NA below 5°C (41°F) or above 54°C (130°F). GPS required.			MALSR	MISSED APPROACH: Climb to 3000 on track 196° to MINOE.		
---	--	--	-------	--	--	--

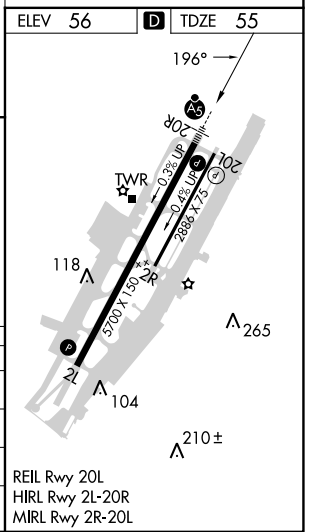
D-ATIS 126.0	SOCAL APP CON 121.3 263.1	JOHN WAYNE TOWER * 126.8 (CTAF) 343.625	GND CON 120.8	CLNC DEL 118.0	CPDLC	UNICOM 122.95
------------------------	-------------------------------------	---	-------------------------	--------------------------	-------	-------------------------



SW-3, 22 FEB 2024 to 21 MAR 2024

SW-3, 22 FEB 2024 to 21 MAR 2024

3000 ↑ fr 196°	MINOE △	VGSI and RNAV glidepath not coincident (VGSI Angle 3.00/TCH 68). See planview for multiple IF locations.	ZETOV 1400
			GP 3.00° TCH 51



CATEGORY	A	B	C	D
RNP 0.11 DA		377/30	322 (400- $\frac{3}{4}$)	
RNP 0.15 DA		563-1 $\frac{1}{4}$	508 (600-1 $\frac{1}{4}$)	
RNP 0.30 DA		619-1 $\frac{1}{2}$	564 (600-1 $\frac{1}{2}$)	

AUTHORIZATION REQUIRED

REIL Rwy 20L
HIRL Rwy 2L-20R
MIRL Rwy 2R-20L

APP CRS	Rwy Idg	5700
016°	TDZE	56
	Apt Elev	56

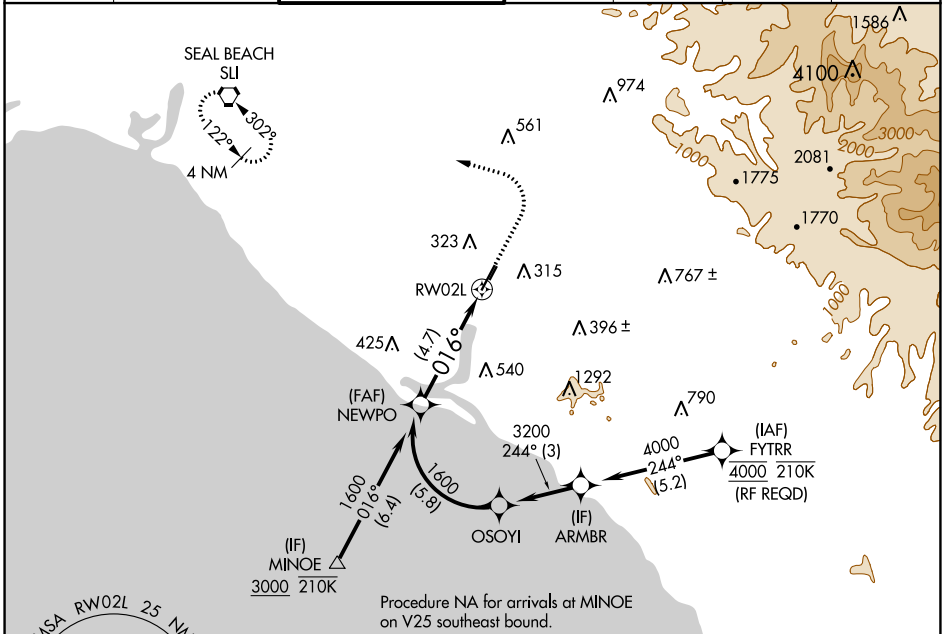
RNAV (RNP) Z RWY 2L

JOHN WAYNE/ORANGE COUNTY (SNA)

▽ For uncompensated Baro-VNAV systems, procedure NA below 5°C (41°F) or above 54°C (130°F). GPS required.

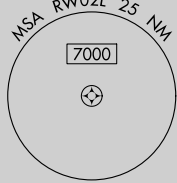
MISSED APPROACH: Climb to 800 then climbing left turn to 2600 direct SLI VORTAC and hold.

D-ATIS 126.0	SOCAL APP CON 121.3 263.1	JOHN WAYNE TOWER ★ 126.8 (CTAF) 0 343.625	GND CON 120.8	CLNC DEL 118.0	CPDLC	UNICOM 122.95
------------------------	-------------------------------------	--	-------------------------	--------------------------	-------	-------------------------

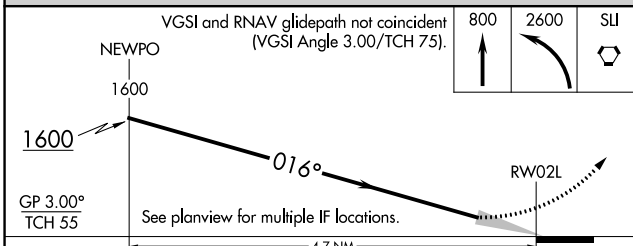
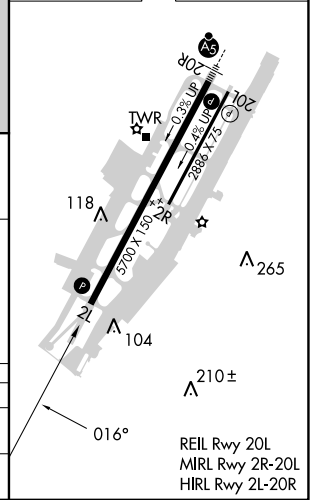


SW-3, 22 FEB 2024 to 21 MAR 2024

SW-3, 22 FEB 2024 to 21 MAR 2024



ELEV	56	D	TDZE	56
------	-----------	----------	------	-----------



CATEGORY	A	B	C	D
RNP 0.30 DA	403-1 1/8 347 (400-1 1/8)			

AUTHORIZATION REQUIRED

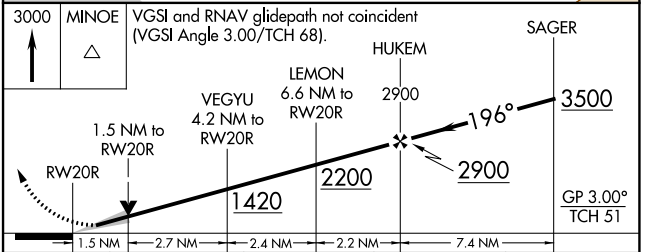
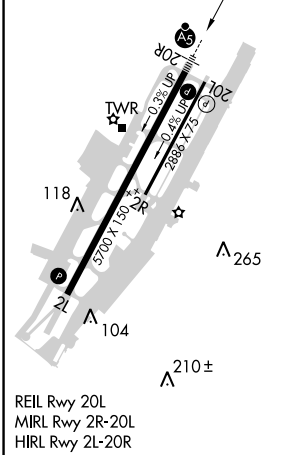
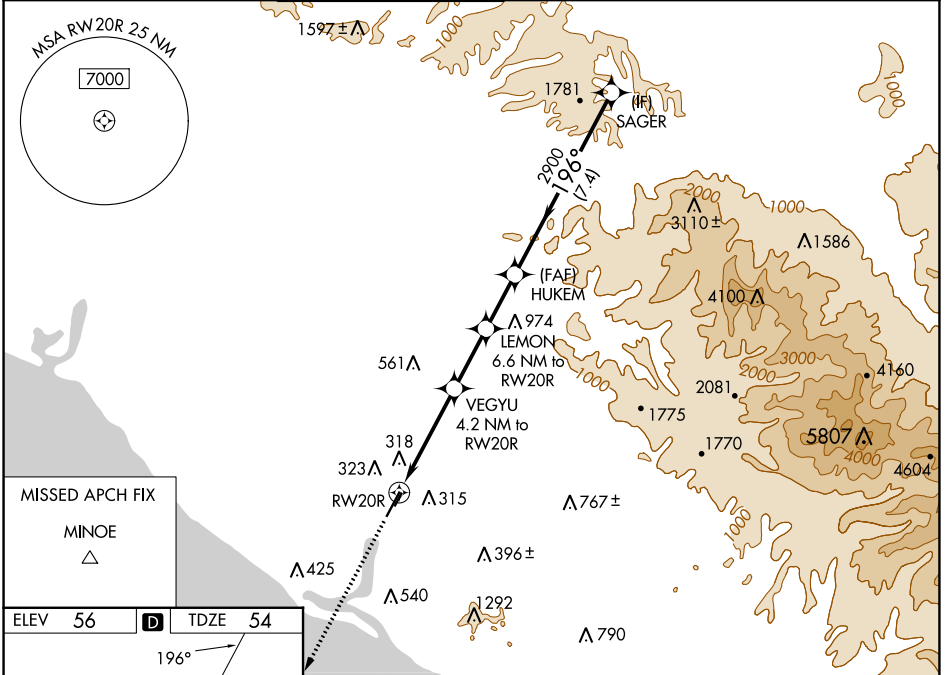
WAAS CH 99502 W20A	APP CRS 196°	Rwy Idg TDZE 54 Apt Elev 56
--	------------------------	---

RNAV (GPS) Y RWY 20R

JOHN WAYNE/ORANGE COUNTY (SNA)

RNP APCH - GPS. RADAR required.		MALSR 	MISSED APPROACH: Climb to 3000 direct MINOE.
<p>⚠ Circling Rwy 20L NA at night. For uncompensated Baro-VNAV systems, LNAV/VNAV NA below 5°C or above 54°C. For inop ALS increase LNAV/VNAV visibility to 1 3/8 SM. *RVR 1800 authorized with use of FD or AP or HUD to DA.</p>			

D-ATIS 126.0	SOCAL APP CON 121.3 263.1	JOHN WAYNE TOWER ★ 126.8 (CTAF) 0 343.625	GND CON 120.8	CLNC DEL 118.0	CPDLC	UNICOM 122.95
------------------------	-------------------------------------	---	-------------------------	--------------------------	-------	-------------------------



CATEGORY	A	B	C	D
LPV DA*	255/24		201 (200-1/2)	
LNAV/VNAV DA	516/50		462 (500-1)	
LNAV MDA	580/24	526 (600-1/2)	580/55	526 (600-1)
C CIRCLING	640-1	584 (600-1)	840-2 1/4 784 (800-2 1/4)	1160-3 1104 (1200-3)

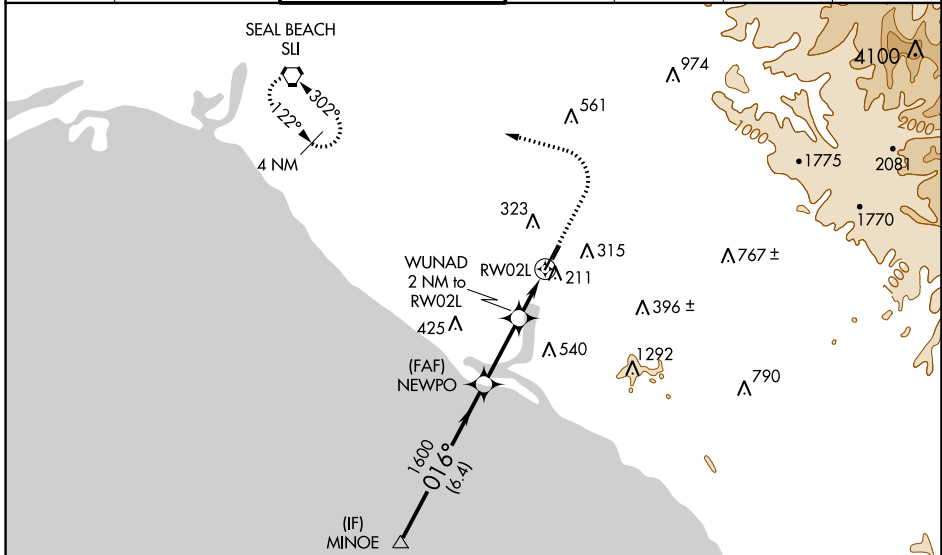
APP CRS	Rwy Idg	5700
016°	TDZE	56
	Apt Elev	56

RNAV (GPS) Y RWY 2L

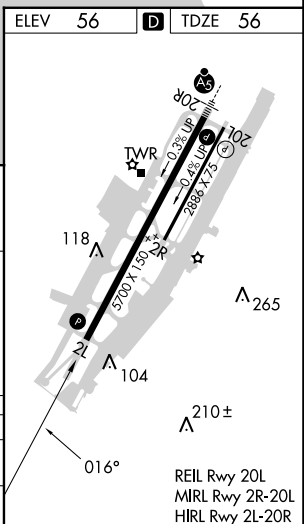
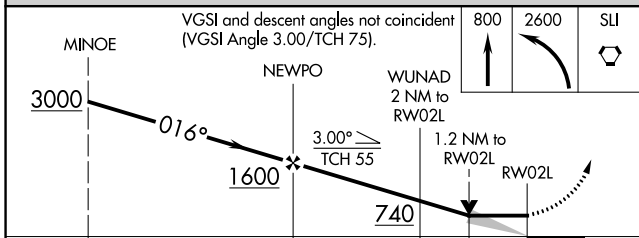
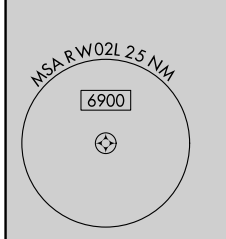
JOHN WAYNE/ORANGE COUNTY (SNA)

RNP APCH - GPS.		MISSED APPROACH: Climb to 800 then climbing left turn to 2600 direct SLI VORTAC and hold.				
▼ ▲ Circling Rwy 20L NA at night.						

D-ATIS 126.0	SOCAL APP CON 121.3 263.1	JOHN WAYNE TOWER ★ 126.8 (CTAF) 0 343.625	GND CON 120.8	CLNC DEL 118.0	CPDLC	UNICOM 122.95
------------------------	-------------------------------------	--	-------------------------	--------------------------	-------	-------------------------



Procedure NA for arrivals at MINOE on V25 southeast bound.



CATEGORY	A	B	C	D
LNVA MDA	520-1 464 (500-1)		520-1 3/8 464 (500-1 3/8)	
▲ CIRCLING	640-1 584 (600-1)		840-2 1/4 784 (800-2 1/4)	1160-3 1104 (1200-3)

SW-3, 22 FEB 2024 to 21 MAR 2024

SW-3, 22 FEB 2024 to 21 MAR 2024