

| | | |
|--|------------------------|---|
| WAAS CH 90208 W18A | APP CRS 181° | Rwy ldg 4997 TDZE 1191 Apt Elev 1191 |
|--|------------------------|---|

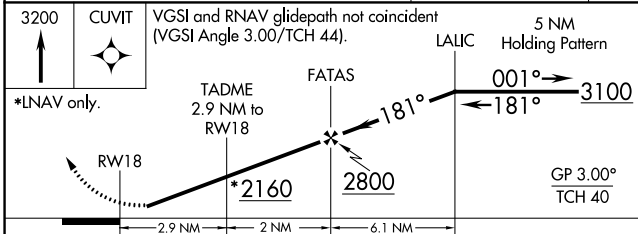
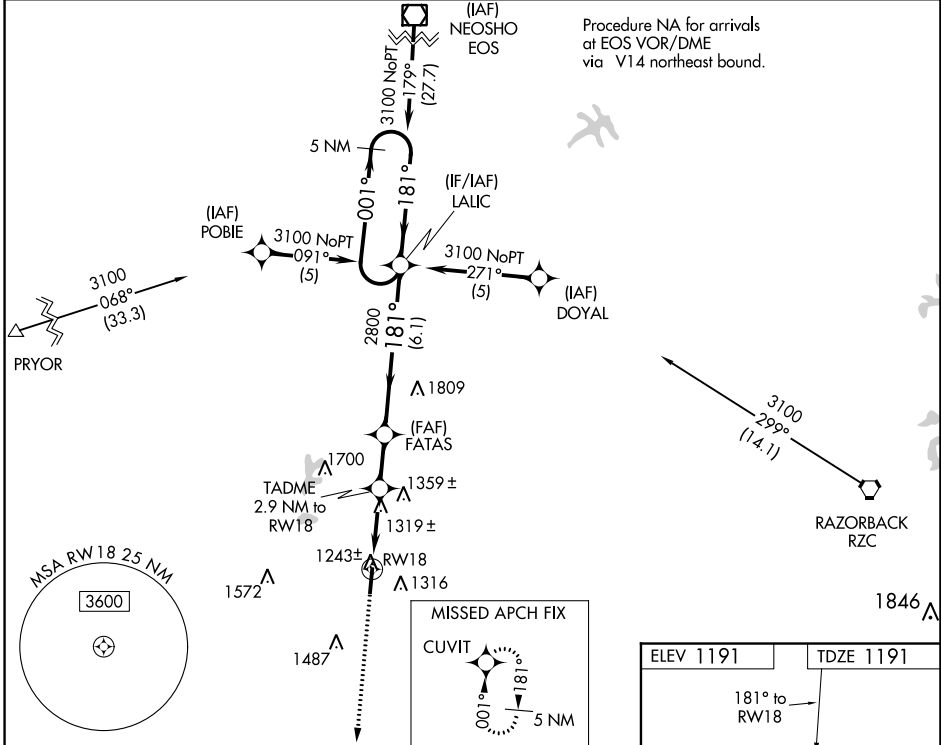
RNAV (GPS) RWY 18

SMITH FIELD (SLG)

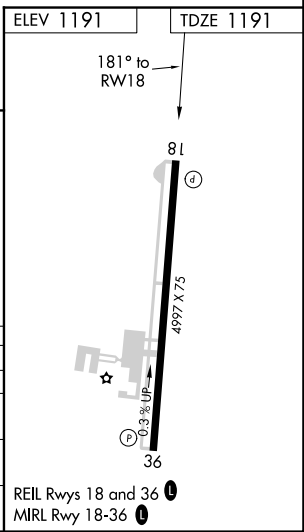
Baro-VNAV NA when using Northwest Arkansas Nil altimeter setting. For uncompensated Baro-VNAV systems, LNAV/VNAV NA below -17°C (2°F) or above 46°C (114°F). DME/DME RNP-0.3 NA. Visibility reduction by helicopters NA. When local altimeter setting not received, use Northwest Arkansas Nil altimeter setting, and increase all DA/MDA 40 feet, and increase LPV visibility ¼ mile all Cats, LNAV/VNAV visibility ½ mile all Cats, and LNAV visibility Cat C and D ¼ mile.

MISSED APPROACH:
Climb to 3200 direct CUVIT and hold.

| | | |
|----------------------------|---|---------------------------------|
| AWOS-3PT 118.375 | RAZORBACK APP CON * 121.0 244.575 | UNICOM 122.8 (CTAF) 0 |
|----------------------------|---|---------------------------------|



| | | | | |
|--------------|-----------------------|-----------------------|-------------------------|-------------------------|
| CATEGORY | A | B | C | D |
| LPV DA | | 1479-1 | 288 (300-1) | |
| LNAV/VNAV DA | | 1623-1½ | 432 (500-1½) | |
| LNAV MDA | 1580-1 | 389 (400-1) | | 1580-1¼ 389 (400-1¼) |
| CIRCLING | 1620-1 429 (500-1) | 1720-1 529 (600-1) | 1720-1½ 529 (600-1½) | 1760-2 569 (600-2) |



SC-1, 20 MAY 2021 to 17 JUN 2021

SC-1, 20 MAY 2021 to 17 JUN 2021

| | | |
|--|------------------------|---|
| WAAS CH 63105 W36A | APP CRS 001° | Rwy Idg TDZE 1181 Apt Elev 1191 |
|--|------------------------|---|

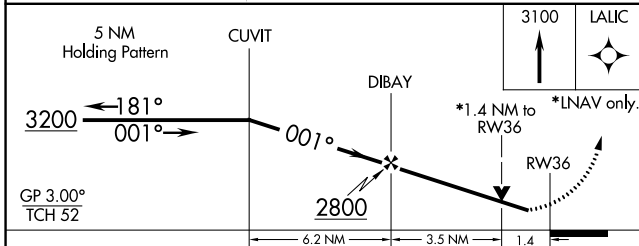
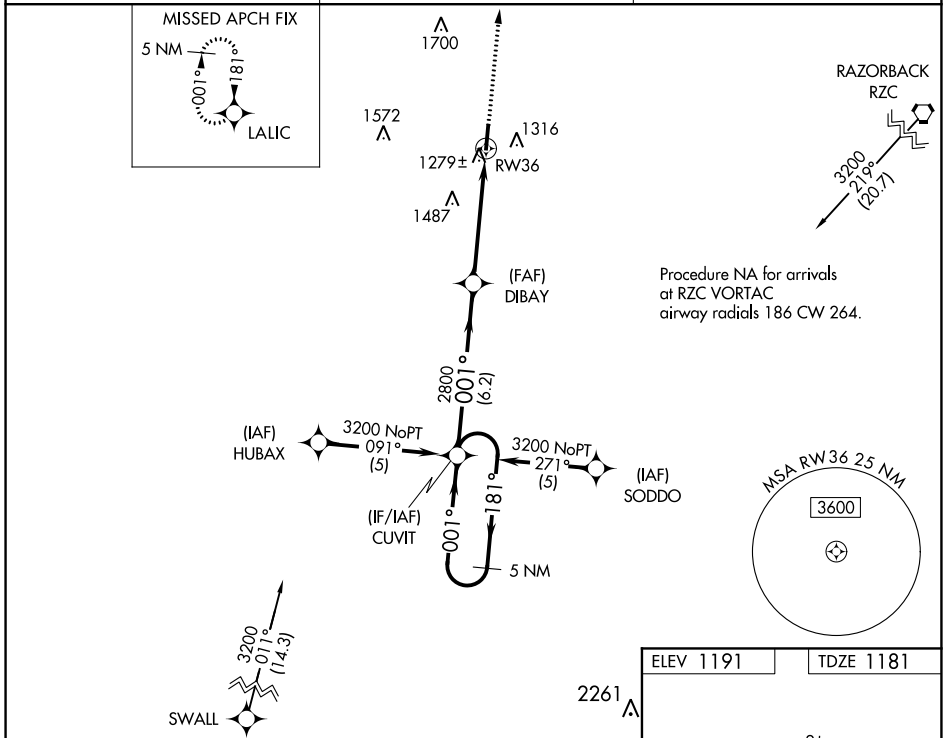
RNAV (GPS) RWY 36

SMITH FIELD (SLG)

⚠ If local altimeter setting not received, use Northwest Arkansas Nil altimeter setting and increase all DAs/MDAs 40 feet. For uncompensated Baro-VNAV systems, LNAV/VNAV NA below -17°C (2°F) or above 46°C (114°F). DME/DME RNP-0.3 NA. Visibility reduction by helicopters NA. Baro-VNAV and VDP NA when using Northwest Arkansas Nil altimeter setting.

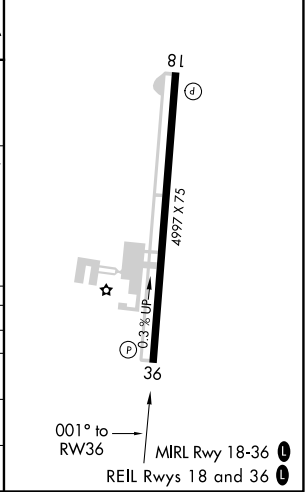
MISSED APPROACH:
Climb to 3100 direct LALIC and hold.

| | | |
|----------------------------|---|-------------------------------|
| AWOS-3PT 118.375 | RAZORBACK APP CON * 121.0 244.575 | UNICOM 122.8 (CTAF) |
|----------------------------|---|-------------------------------|



| | |
|-----------|-----------|
| ELEV 1191 | TDZE 1181 |
|-----------|-----------|

| CATEGORY | A | B | C | D |
|--------------|-----------------------|-----------------------|-------------------------|-------------------------|
| LPV DA | | 1431-1 | 250 (300-1) | |
| LNAV/VNAV DA | | 1549-1¼ | 368 (400-1¼) | |
| LNAV MDA | 1660-1 | 479 (500-1) | 1660-1¼ 479 (500-1¼) | 1660-1½ 479 (500-1½) |
| CIRCLING | 1660-1 469 (500-1) | 1720-1 529 (600-1) | 1720-1½ 529 (600-1½) | 1760-2 569 (600-2) |



SC-1, 20 MAY 2021 to 17 JUN 2021

SC-1, 20 MAY 2021 to 17 JUN 2021