

LOC/DME I-SLE 110.3 Chan 40	APP CRS 313°	Rwy Idg TDZE 213 Apt Elev 213	5811
--	------------------------	---	-------------

ILS or LOC Z RWY 31

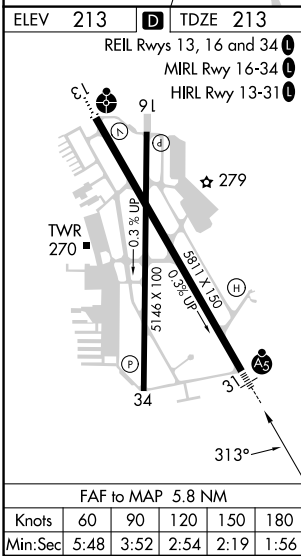
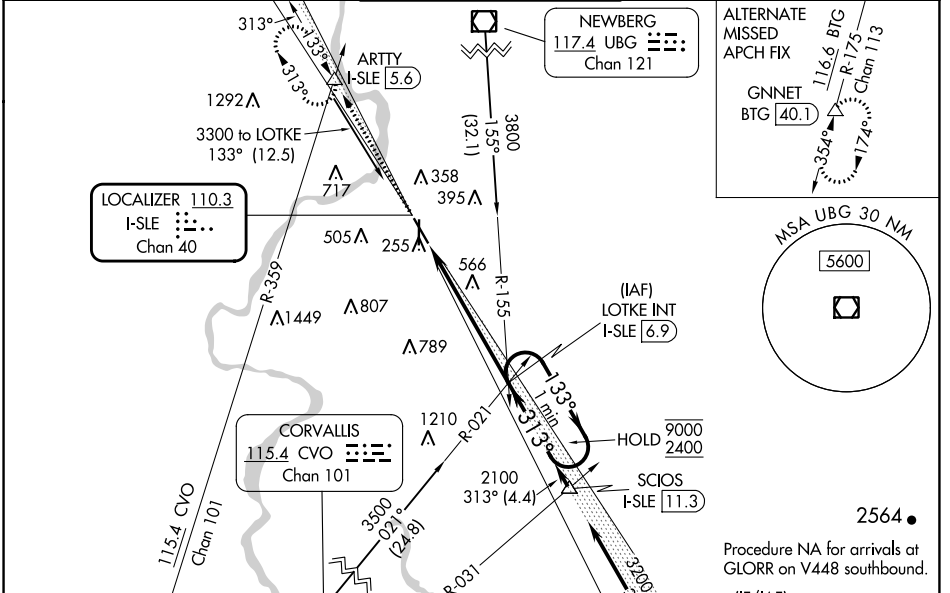
MCNARY FLD (SLE)

RADAR required for procedure entry at ARTY.

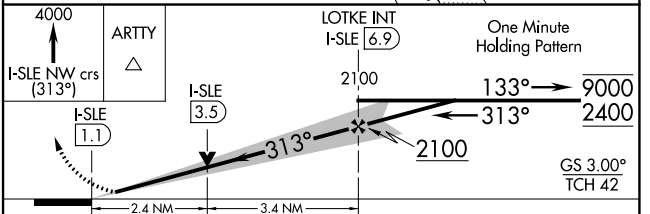
⚠ Circling Rwy 16, 34 NA at night. For inop ALS, increase S-LOC 31 Cat C/D visibility to 2½ SM.
*RVR 1800 authorized with use of FD or AP or HUD to DA (NA when using Mc Minnville altimeter setting).

MALSR
MISSED APPROACH: Climb to 4000 on I-SLE localizer NW course (313°) to ARTY INT/I-SLE 5.6 DME and hold, continue climb-in-hold to 4000.

ATIS 124.55	SEATTLE CENTER 125.8 291.7	SALEM TOWER ★ 119.1 (CTAF) 0 257.2	GND CON 121.9	UNICOM 122.95
-----------------------	--------------------------------------	--	-------------------------	-------------------------



ELEV 213	D	TDZE 213
----------	----------	----------



CATEGORY	A	B	C	D
S-ILS 31*	413/24 200 (200-½)			
S-LOC 31	1020/24 807 (900-½)	1020/40 807 (900-¾)	1020-1⅞ 807 (900-1⅞)	807 (900-1⅞)
C CIRCLING	1020-1 807 (900-1)	1020-1¼ 807 (900-1¼)	1060-2½ 847 (900-2½)	1260-3 1047 (1100-3)

NW-1, 22 FEB 2024 to 21 MAR 2024

NW-1, 22 FEB 2024 to 21 MAR 2024

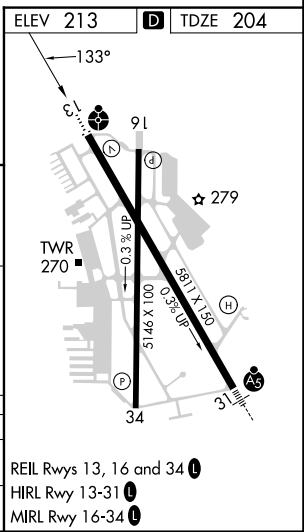
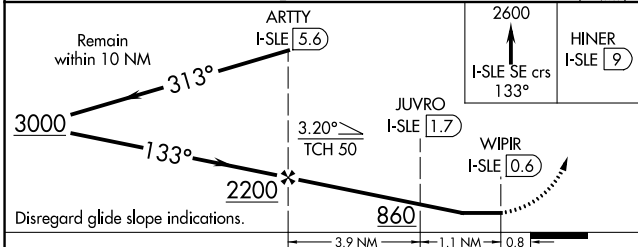
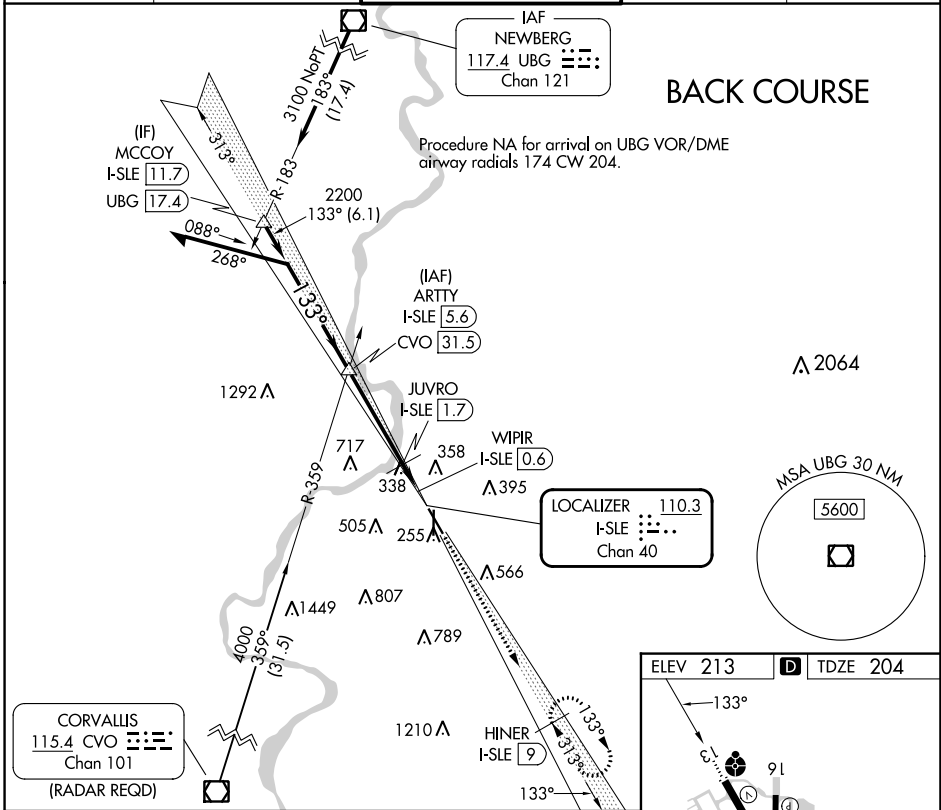
LOC/DME I-SLE	APP CRS	Rwy Idg	5811
110.3	133°	TDZE	204
Chan 40		Apt Elev	213

LOC BC RWY 13

MCNARY FLD (SLE)

DME required.		ODALS	MISSED APPROACH: Climb to 2600 on I-SLE localizer SE course 133° to HINER/I-SLE 9 DME and hold.	
<p>⚠ Circling Rwy 16, 34 NA at night.</p> <p>⚠ Rwy 13 helicopter visibility reduction below ¾ SM NA.</p>				

ATIS	SEATTLE CENTER	SALEM TOWER ★	GND CON	UNICOM
124.55	125.8 291.7	119.1 (CTAF) 0 257.2	121.9	122.95



NW-1, 22 FEB 2024 to 21 MAR 2024

NW-1, 22 FEB 2024 to 21 MAR 2024

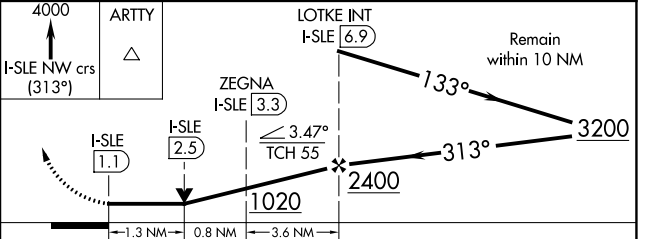
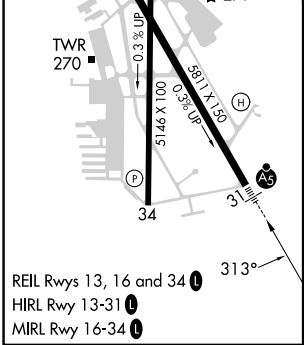
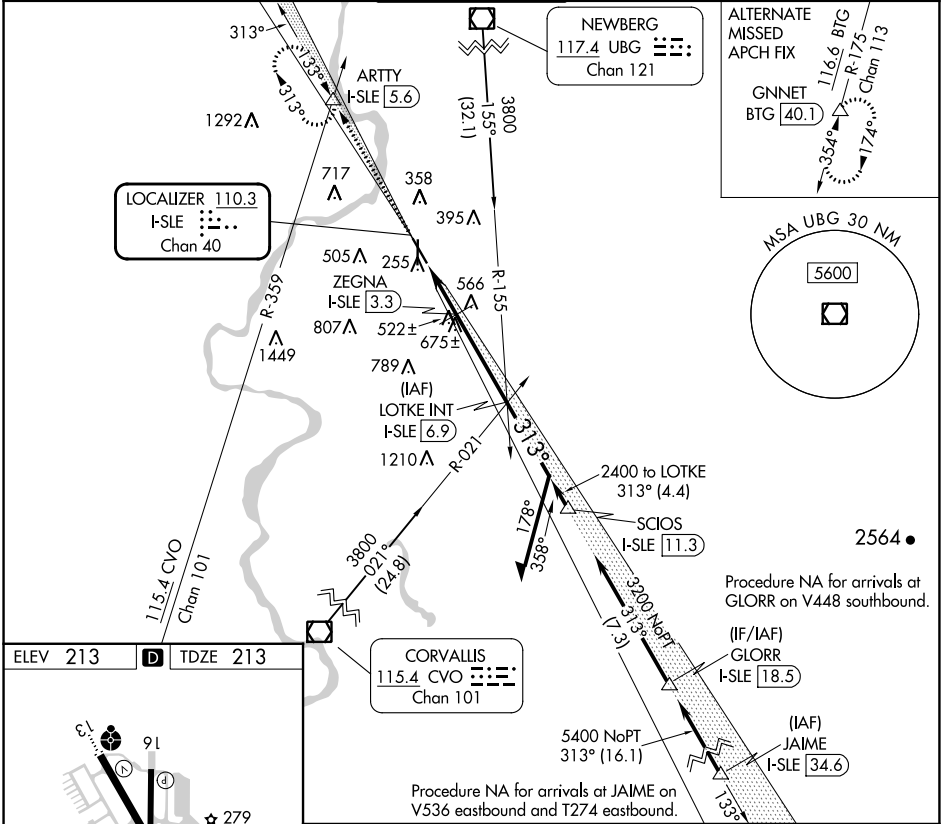
LOC/DME I-SLE 110.3 Chan 40	APP CRS 313°	Rwy Idg TDZE 213 Apt Elev 213	5811
--	------------------------	---	-------------

LOC Y RWY 31

MCNARY FLD (SLE)

DME required. RADAR required.	MALSR	MISSED APPROACH: Climb to 4000 on I-SLE localizer NW course (313°) to ARTTY INT/I-SLE 5.6 DME and hold, continue climb-in-hold to 4000.
<p>Circling Rwy 16, 34 NA at night.</p>		

ATIS 124.55	SEATTLE CENTER 125.8 291.7	SALEM TOWER* 119.1 (CTAF) 0 257.2	GND CON 121.9	UNICOM 122.95
-----------------------	--------------------------------------	---	-------------------------	-------------------------



CATEGORY	A	B	C	D
S-LOC 31	760/24	547 (600-½)	760/60	547 (600-1¼)
C CIRCLING	880-1 667 (700-1)	960-1 747 (800-1)	1060-2½ 847 (900-2½)	1260-3 1047 (1100-3)

NW-1, 22 FEB 2024 to 21 MAR 2024

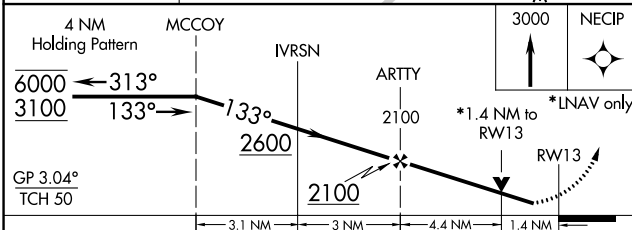
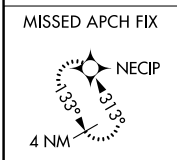
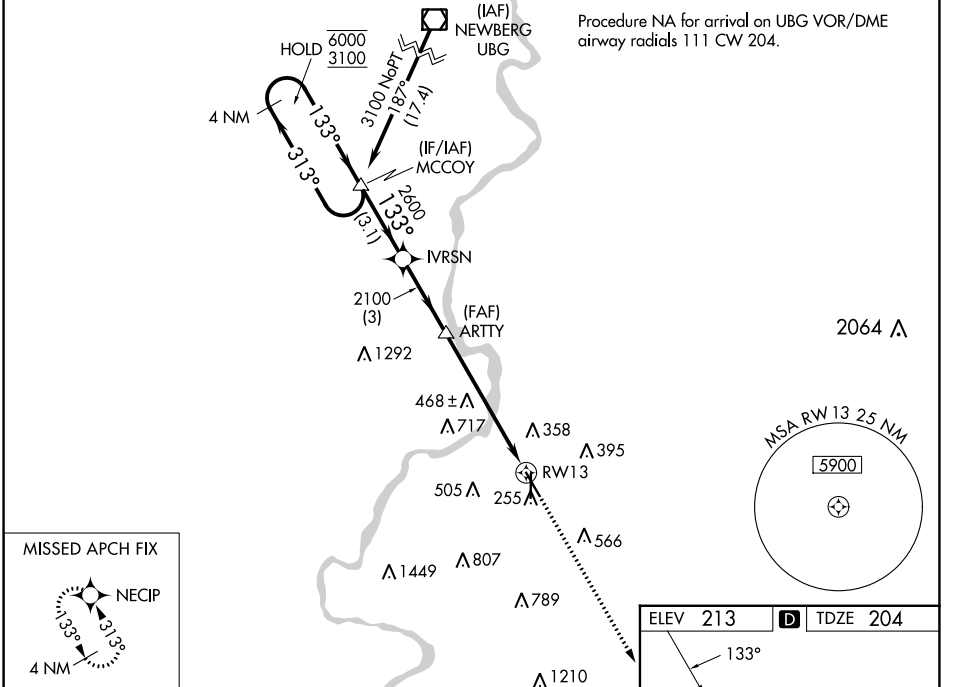
NW-1, 22 FEB 2024 to 21 MAR 2024

WAAS CH 97642 W13A	APP CRS 133°	Rwy Idg TDZE Apt Elev	5811 204 213
--	------------------------	-----------------------------	---

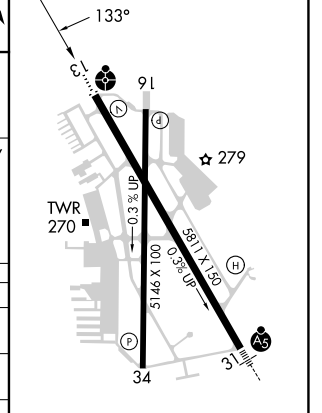
RNAV (GPS) RWY 13

MCNARY FLD (SLE)

RNP APCH.		ODALS 	MISSED APPROACH: Climb to 3000 direct NECIP and hold.	
⚠ Circling Rwy 16, 34 NA at night. Rwy 13 helicopter visibility reduction below 3/4 SM NA. Inop table does not apply to LNAV/VNAV all Cats. For uncompensated Baro-VNAV systems, LNAV/VNAV NA below -15°C or above 54°C.				
ATIS 124.55	SEATTLE CENTER 125.8 291.7	SALEM TOWER ★ 119.1(CTAF) 257.2	GND CON 121.9	UNICOM 122.95



ELEV 213	TDZE 204
----------	----------



CATEGORY	A	B	C	D
LPV DA	454-3/4 250 (300-3/4)			
LNAV/VNAV DA	580-1 376 (400-1)			
LNAV MDA	700-3/4 496 (500-3/4)	700-1 1/4 496 (500-1 1/4)		
CIRCLING	880-1 667 (700-1)	960-1 747 (800-1)	1060-2 1/2 847 (900-2 1/2)	1260-3 1047 (1100-3)

REIL Rws 13, 16 and 34
 HIRL Rwy 13-31
 MIRL Rwy 16-34

NW-1, 22 FEB 2024 to 21 MAR 2024

NW-1, 22 FEB 2024 to 21 MAR 2024

WAAS CH 86202 W31A	APP CRS 313°	Rwy Idg TDZE Apt Elev	5811 214 214
--	------------------------	-----------------------------	---

RNAV (GPS) RWY 31

MCNARY FLD (SLE)

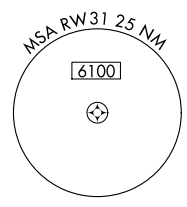
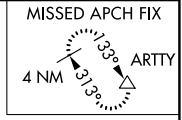
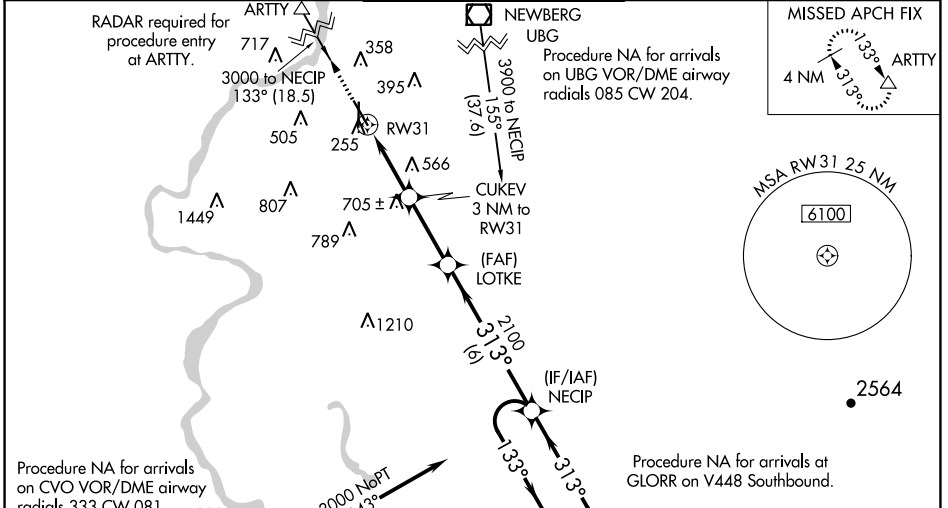
RNP APCH.

For uncompensated Baro-VNAV systems, LNAV/VNAV NA below -15°C or above 54°C
 When local altimeter setting not received, use Mc Minnville altimeter setting and increase all DA 49 feet; increase all MDAs 60 feet; increase LNAV/VNAV visibility all Cats to 1 3/8 SM, LNAV Cat C and D visibility to 2 SM, and Circling Cat A visibility to 1 1/4 SM and Cat C visibility to 2 3/4 SM. Baro-VNAV and VDP NA when using Mc Minnville altimeter setting. For inop ALS, increase LNAV/VNAV all Cats visibility to 1 7/8 SM and increase LNAV Cat C and D visibility to 2 1/2 SM. For inop ALS when using Mc Minnville altimeter setting, increase LPV all Cats visibility to 4500, increase LNAV/VNAV all Cats visibility to 2 SM, increase LNAV Cats C and D visibility to 2 1/2 SM. ** RVR 1800 authorized with use of FD or AP or HUD to DA, NA when using Mc Minnville altimeter setting.



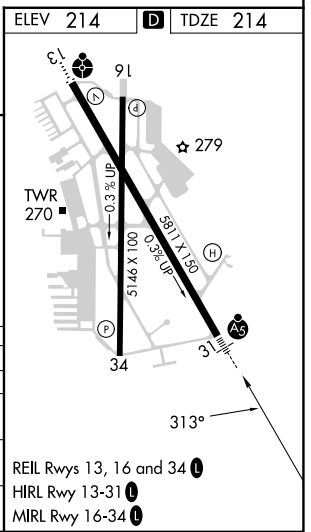
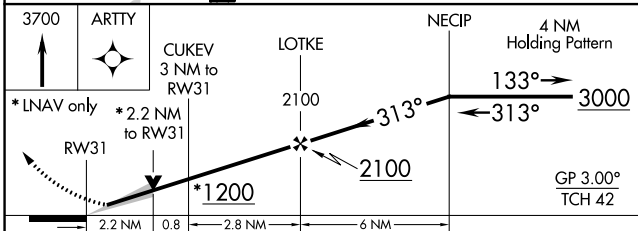
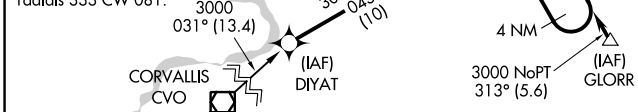
MISSED APPROACH:
Climb to 3700 direct ARTTY and hold, continue climb-in-hold to 3700.

ATIS 124.55	SEATTLE CENTER 125.8 291.7	SALEM TOWER * 119.1 (CTAF) 0 257.2	GND CON 121.9	UNICOM 122.95
-----------------------	--------------------------------------	--	-------------------------	-------------------------



NW-1, 22 FEB 2024 to 21 MAR 2024

NW-1, 22 FEB 2024 to 21 MAR 2024



CATEGORY	A	B	C	D
LPV DA **		414/24	200 (200-1/2)	
LNAV/VNAV DA		891-1 1/2	677 (700-1 1/2)	
LNAV MDA	1020/50	806 (900-1)	1020-1 7/8	806 (900-1 7/8)
CIRCLING	1020-1 806 (900-1)	1020-1 1/4 806 (900-1 1/4)	1060-2 1/2 846 (900-2 1/2)	1260-3 1046 (1100-3)