

WAAS CH 70345 W15A	APP CRS 148°	Rwy ldg TDZE Apt Elev	5498 1048 1051
--	------------------------	-----------------------------	---

RNAV (GPS) RWY 15

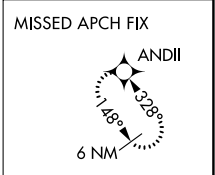
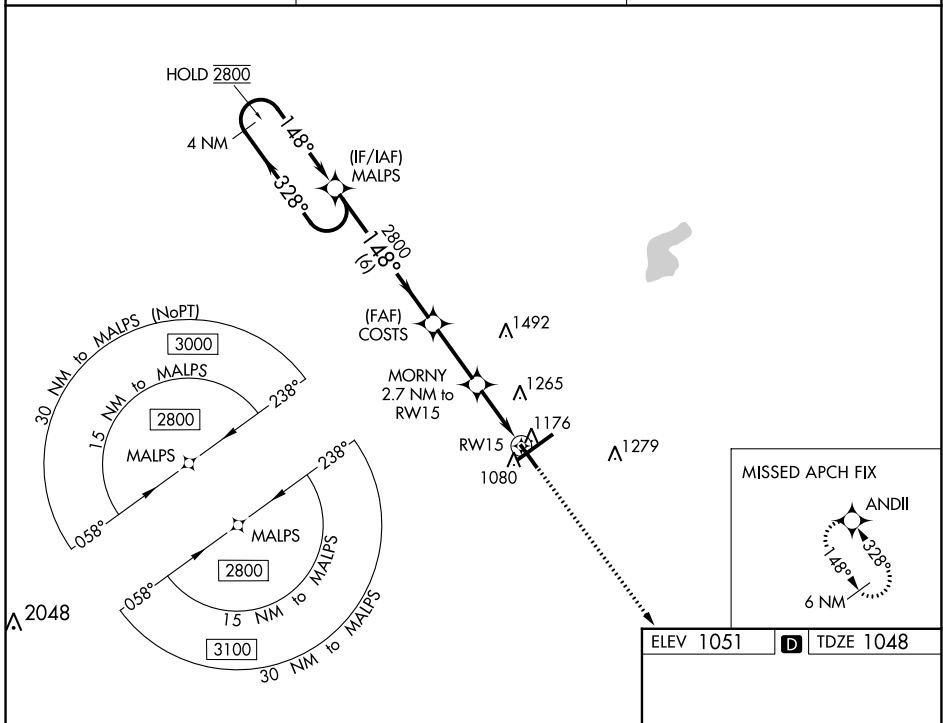
SPRINGFIELD/BECKLEY MUNI (SGH)

RNP APCH - GPS.

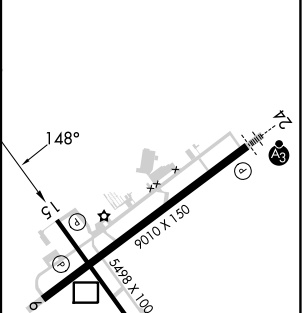
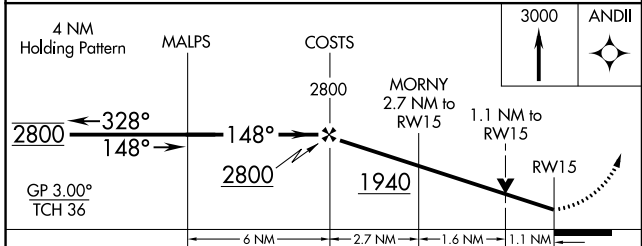
▼ Rwy 15 helicopter visibility reduction below 3/4 SM NA.
 ▲ For uncompensated Baro-VNAV systems, LNAV/VNAV NA below -17°C or above 54°C.

MISSED APPROACH: Climb to 3000 direct ANDII and hold.

AWOS-3PT 134.975	COLUMBUS APP CON 118.85 269.275	UNICOM 122.95 (CTAF) ①
----------------------------	---	----------------------------------



ELEV 1051	TDZE 1048
-----------	-----------



CATEGORY	A	B	C	D
LPV DA		1298-3/4	250 (300-3/4)	
LNAV/VNAV DA		1337-7/8	289 (300-7/8)	
LNAV MDA	1440-1	392 (400-1)	1440-1 1/8	392 (400-1 1/8)
CIRCLING	1480-1 429 (500-1)	1580-1 529 (600-1)	1580-1 1/2 529 (600-1 1/2)	1620-2 569 (600-2)

HIRL Rwy 6-24 ①
 MRL Rwy 15-33 ①
 REIL Rws 6, 15 and 33 ①

EC-2, 22 FEB 2024 to 21 MAR 2024

EC-2, 22 FEB 2024 to 21 MAR 2024

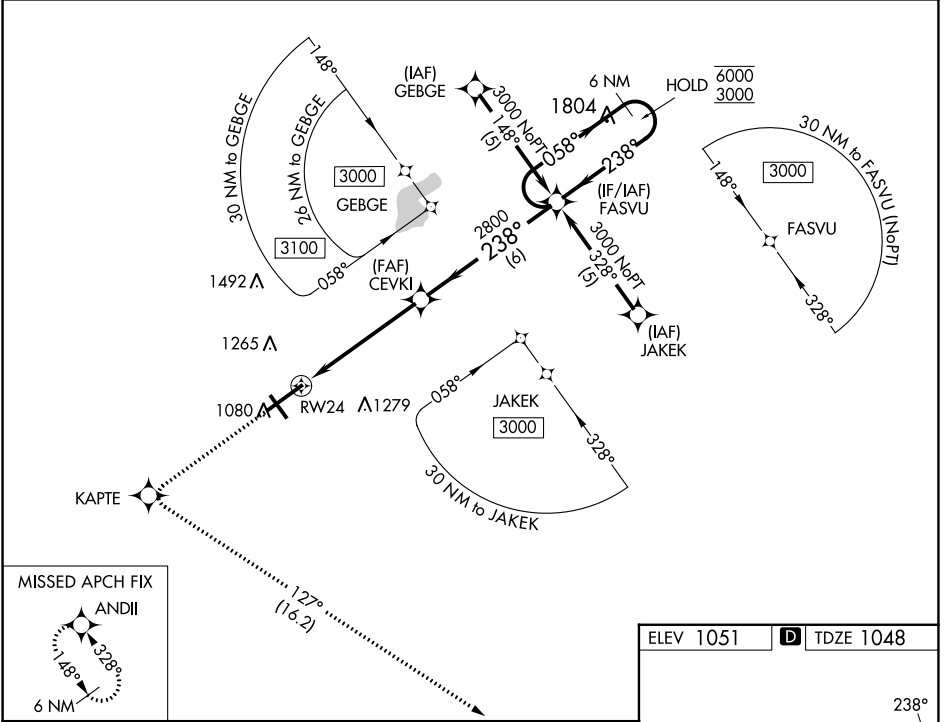
WAAS CH 97615 W24A	APP CRS 238°	Rwy Idg TDZE Apt Elev	9009 1048 1051
--	------------------------	-----------------------------	---

RNAV (GPS) RWY 24

SPRINGFIELD/BECKLEY MUNI (SGH)

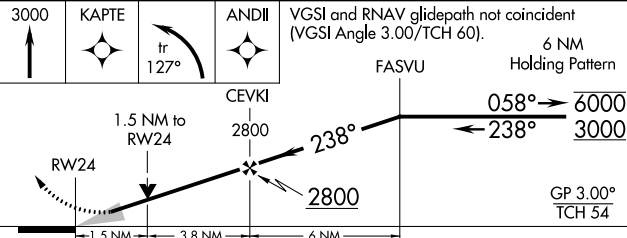
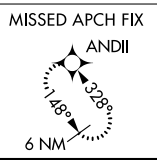
RNP APCH - GPS.	SSALR	MISSED APPROACH: Climb to 3000 direct KAPTE and left turn on track 127° to ANDII and hold.
<p>▼ For uncompensated Baro-VNAV systems, LNAV/VNAV NA below -17°C or above 54°C.</p> <p>▲ For inop ALS, increase LNAV/VNAV all Cats visibility to 1 SM.</p>		

AWOS-3PT 134.975	COLUMBUS APP CON 118.85 269.275	UNICOM 122.95 (CTAF) 1
----------------------------	---	----------------------------------



EC-2, 22 FEB 2024 to 21 MAR 2024

EC-2, 22 FEB 2024 to 21 MAR 2024



ELEV 1051	D TDZE 1048
-----------	--------------------

HIRL Rwy 6-24 1
MIRL Rwy 15-33 1
REIL Rws 6, 15 and 33 1

CATEGORY	A	B	C	D
LPV DA		1248-½	200 (200-½)	
LNAV/VNAV DA		1398-⅝	350 (400-⅝)	
LNAV MDA	1580-½	532 (600-½)	1580-1	532 (600-1)
C CIRCLING	1580-1	529 (600-1)	1580-1½ 529 (600-1½)	1620-2 569 (600-2)

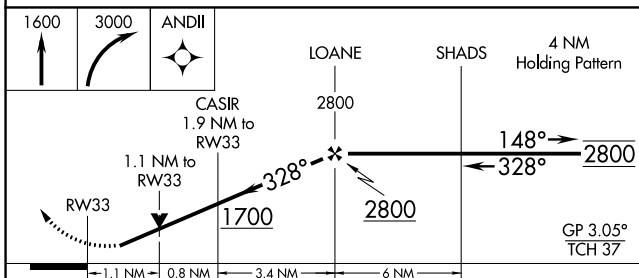
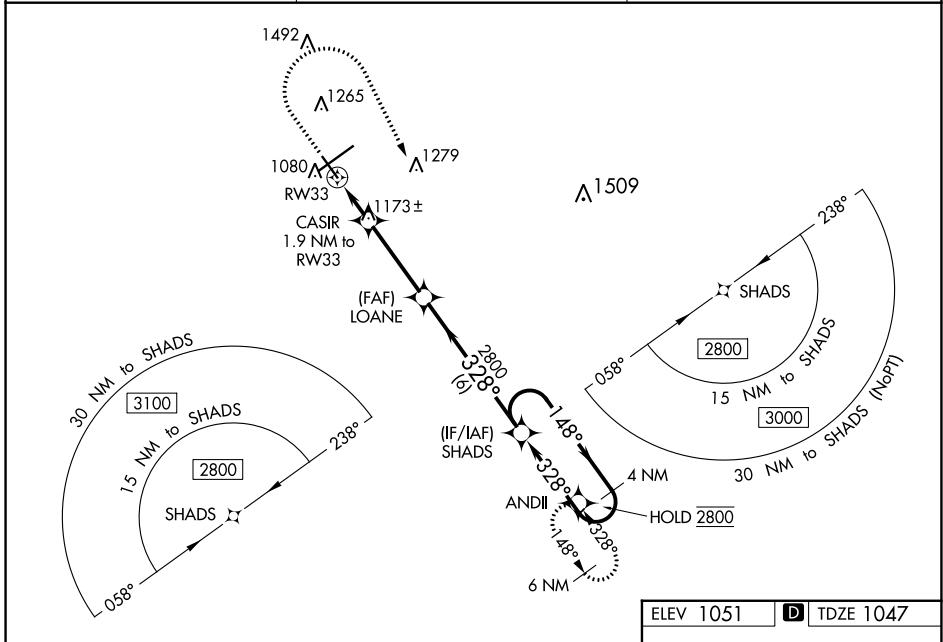
WAAS CH 77545 W33A	APP CRS 328°	Rwy ldg TDZE Apt Elev	5498 1047 1051
--	------------------------	-----------------------------	---

RNAV (GPS) RWY 33

SPRINGFIELD/BECKLEY MUNI (SGH)

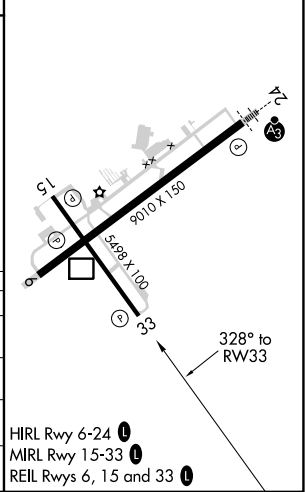
RNP APCH - GPS.	MISSED APPROACH: Climb to 1600 then climbing right turn to 3000 direct ANDII and hold.
<p>Rwy 33 helicopter visibility reduction below 3/4 SM NA. For uncompensated Baro-VNAV systems, LNAV/VNAV NA below -17°C or above 54°C.</p>	

AWOS-3PT 134.975	COLUMBUS APP CON 118.85 269.275	UNICOM 122.95 (CTAF) 0
----------------------------	---	----------------------------------



ELEV 1051	D TDZE 1047
-----------	--------------------

CATEGORY	A	B	C	D
LPV DA		1349-7/8	302 (300-7/8)	
LNAV/VNAV DA		1350-7/8	303 (300-7/8)	
LNAV MDA	1440-1	393 (400-1)	1440-1 1/8	393 (400-1 1/8)
C CIRCLING	1480-1 429 (500-1)	1580-1 529 (600-1)	1580-1 1/2 529 (600-1 1/2)	1620-2 569 (600-2)



EC-2, 22 FEB 2024 to 21 MAR 2024

EC-2, 22 FEB 2024 to 21 MAR 2024

- HIRL Rwy 6-24 0
- MIRL Rwy 15-33 0
- REIL Rws 6, 15 and 33 0

WAAS CH 58115 W06A	APP CRS 058°	Rwy ldg TDZE Apt Elev	9009 1051 1051
--	------------------------	-----------------------------	---

RNAV (GPS) RWY 6

SPRINGFIELD/BECKLEY MUNI (SGH)

RNP APCH - GPS

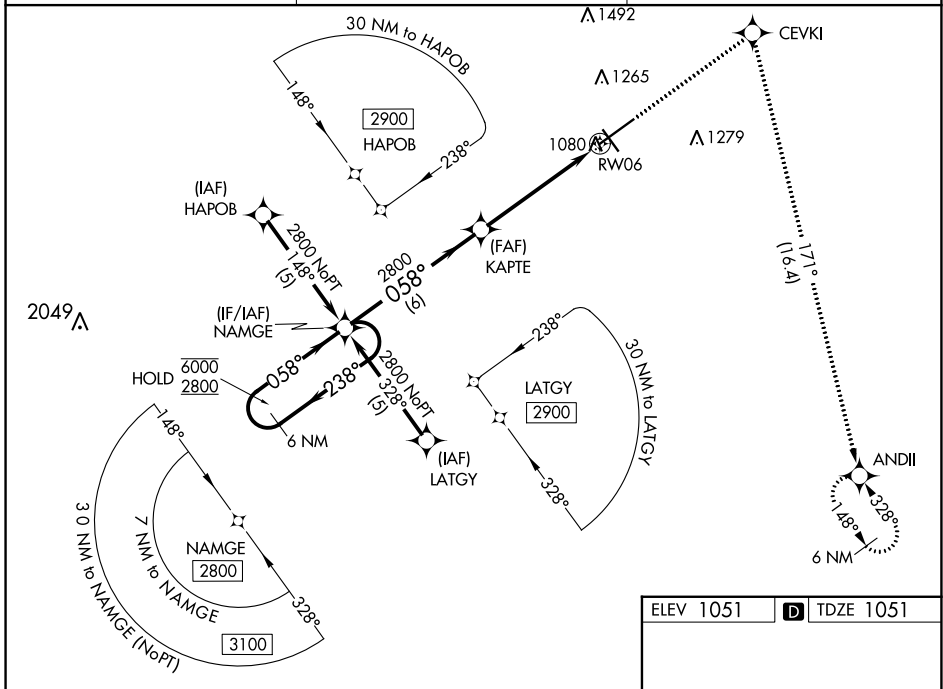
⚠ Rwy 6 helicopter visibility reduction below 3/4 SM NA.
For uncompensated Baro-VNAV systems, LNAV/VNAV NA below -17°C or above 54°C

MISSED APPROACH: Climb to 3000
direct CEVKI and right turn on track 171°
to ANDII and hold.

AWOS-3PT
134.975

COLUMBUS APP CON
118.85 269.275

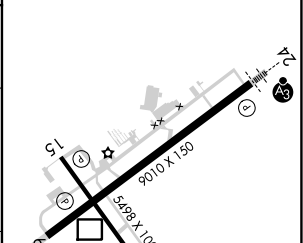
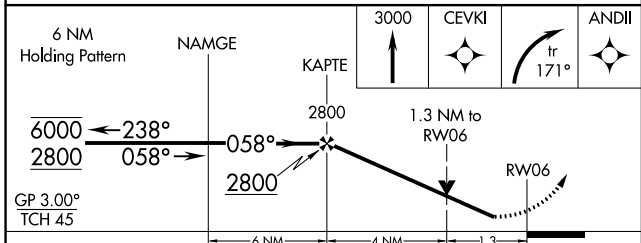
UNICOM
122.95 (CTAF) ①



EC-2, 22 FEB 2024 to 21 MAR 2024

EC-2, 22 FEB 2024 to 21 MAR 2024

ELEV 1051 **D** TDZE 1051



CATEGORY	A	B	C	D
LPV DA		1354-7/8	303 (400-7/8)	
LNAV/VNAV DA		1429-1	378 (400-1)	
LNAV MDA	1500-1	449 (500-1)	1500-1 3/8 449 (500-1 3/8)	
C CIRCLING	1500-1 449 (500-1)	1580-1 529 (600-1)	1580-1 1/2 529 (600-1 1/2)	1620-2 569 (600-2)

HIRL Rwy 6-24 ①
MIRL Rwy 15-33 ①
REIL Rws 6, 15 and 33 ①