

LOC/DME I-SCK 109.1 Chan 28	APP CRS 294°	Rwy Idg TDZE Apt Elev	8650 32 33
------------------------------------------	------------------------	-----------------------------	---------------------------------------

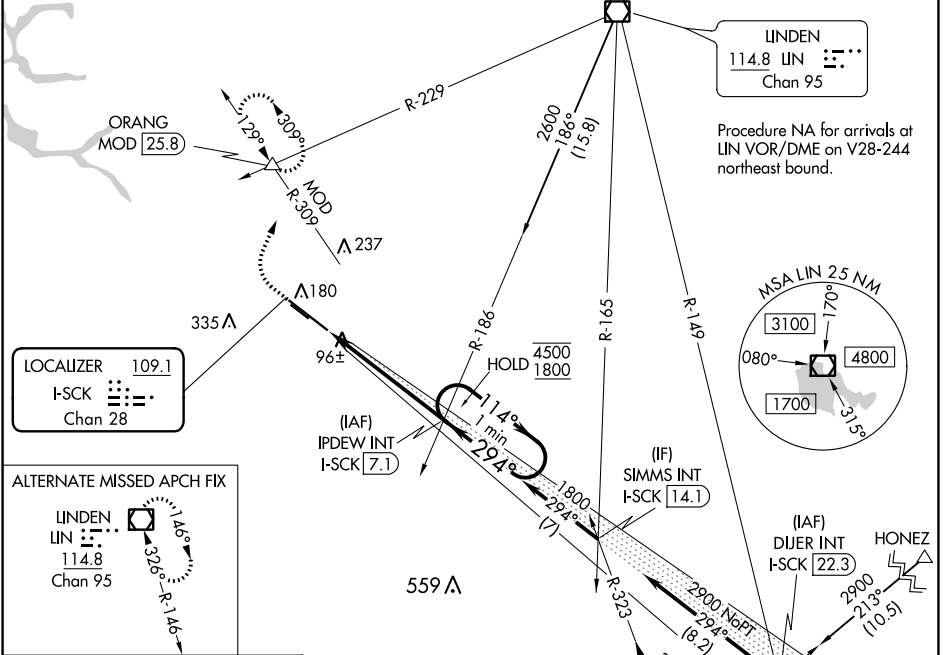
ILS RWY 29R (SA CAT II)
STOCKTON METRO (SCK)

Reduced lighting: requires specific OPSPEC, MSPEC, or LOA approval and use of autoland or HUD to touchdown. Procedure NA when tower closed.

MALS R

MISSED APPROACH: Climb to 500 then climbing right turn to 2000 on heading 010° and MOD VOR/DME R-309 to ORANG INT/MOD 25.8 DME and hold.

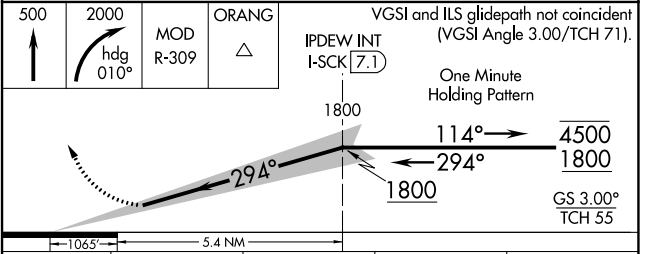
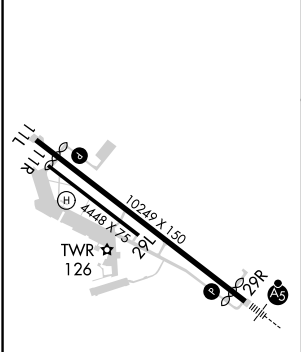
ATIS 118.25	NORCAL APP CON (SE-NW) 123.85 278.3 (N-SE) 125.1 363.2	STOCKTON TOWER * 120.3 (CTAF) 0 239.0	GND CON 121.9	UNICOM 122.95
-----------------------	----------------------------------------------------------------------------	--------------------------------------------------------	-------------------------	-------------------------



SW-2, 22 FEB 2024 to 21 MAR 2024

SW-2, 22 FEB 2024 to 21 MAR 2024

ELEV 33	D	TDZE 32
---------	----------	---------



CATEGORY	A	B	C	D
S-ILS 29R		RA 105/12	100 DA 132	

SA CATEGORY II ILS - SPECIAL AIRCREW & AIRCRAFT CERTIFICATION REQUIRED

LOC/DME I-SCK 109.1 Chan 28	APP CRS 294°	Rwy Idg TDZE Apt Elev	8650 32 33
------------------------------------------	------------------------	-----------------------------	---------------------------------------

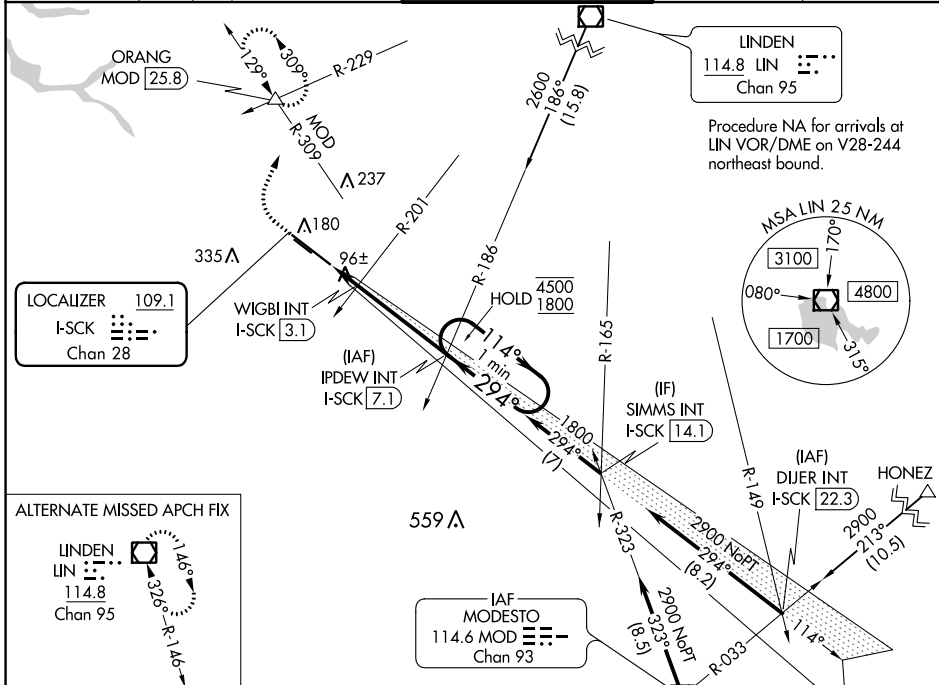
ILS or LOC RWY 29R

STOCKTON METRO (SCK)

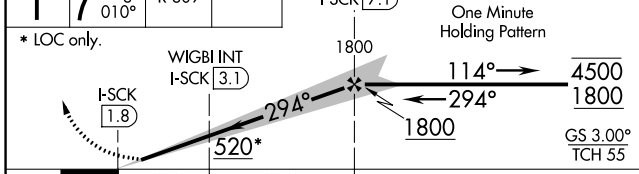
⚠ For inop ALS, increase S-LOC 29R Cat C/D visibility to 1 3/8 SM.
⚠ #RVR 1800 authorized with use of FD or AP or HUD to DA.

MALS R MISSED APPROACH: Climb to 500 then climbing right turn to 2000 on heading 010° and MOD VOR/DME R-309 to ORANG INT/MOD 25.8 DME and hold.

ATIS 118.25	NORCAL APP CON (SE-NW) 123.85 278.3 (N-SE) 125.1 363.2	STOCKTON TOWER * 120.3 (CTAF) 0 239.0	GND CON 121.9	UNICOM 122.95
-----------------------	----------------------------------------------------------------------------	-------------------------------------------------	-------------------------	-------------------------

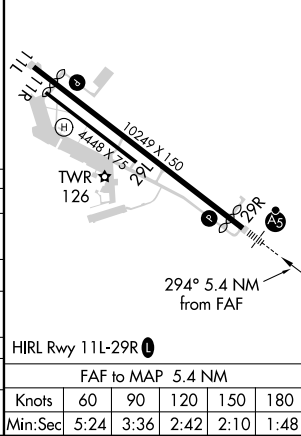


500	2000	ORANG	VGSI and ILS glidepath not coincident (VGSI Angle 3.00/TCH 71).
		MOD R-309	IPDEW INT I-SCK [7.1]



CATEGORY	A	B	C	D
S-ILS 29R #	232/24		200 (200-1/2)	
S-LOC 29R	520/24	488 (500-1/2)	520/50	488 (500-1)
CIRCLING	520-1	540-1	640-1 3/4	640-2
	487 (500-1)	507 (600-1)	607 (700-1 3/4)	607 (700-2)
WIGBI FIX MINIMUMS (DUAL VOR RECEIVERS or DME REQUIRED)				
S-LOC 29R	360/24	328 (400-1/2)	360/26	328 (400-1/2)
CIRCLING	500-1	540-1	640-1 3/4	640-2
	467 (500-1)	507 (600-1)	607 (700-1 3/4)	607 (700-2)

ELEV 33	TDZE 32
---------	---------



SW-2, 22 FEB 2024 to 21 MAR 2024

SW-2, 22 FEB 2024 to 21 MAR 2024

WAAS CH 72910 W 11A	APP CRS 114°	Rwy Idg TDZE Apt Elev	8650 29 33
-----------------------------------------	------------------------	-----------------------------	---------------------------------------

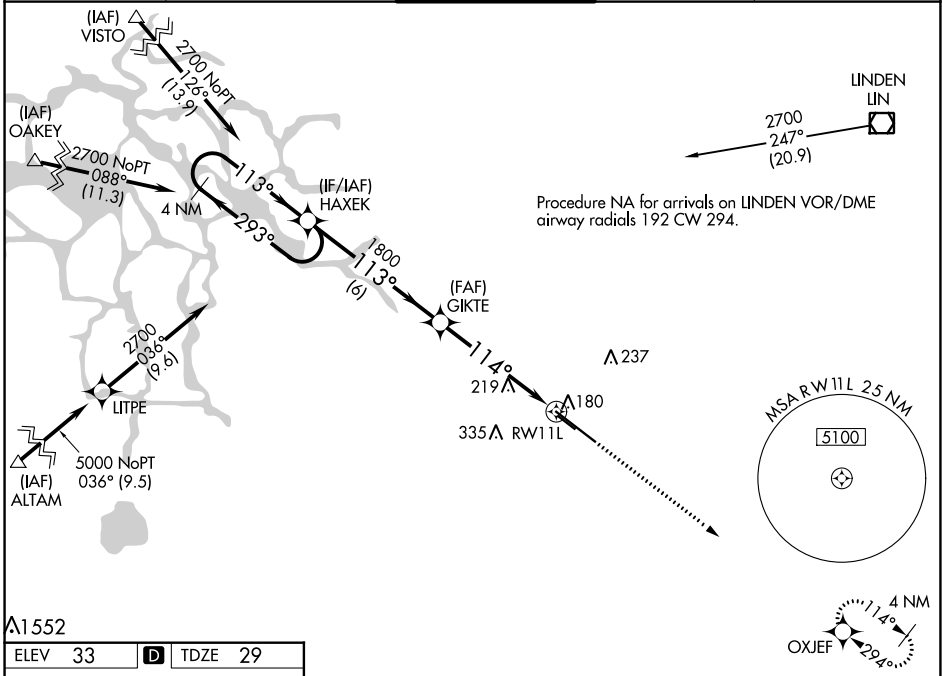
RNAV (GPS) RWY 11L

STOCKTON METRO (SCK)

⚠ For uncompensated Baro-VNAV systems, LNAV/VNAV NA below -4°C (25°F) or above 54°C (130°F). DME/DME RNP-0.3 NA.

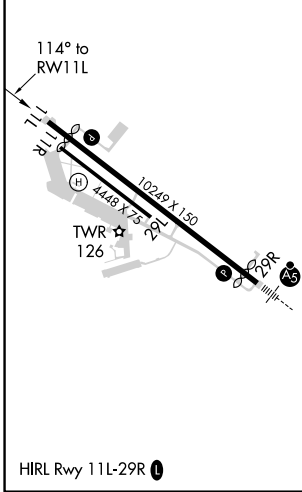
MISSED APPROACH: Climb to 2000 direct OXJEF and hold.

ATIS 118.25	NORCAL APP CON (SE-NW) 123.85 278.3 (N-SE) 125.1 363.2	STOCKTON TOWER * 120.3 (CTAF) 0 239.0	GND CON 121.9	UNICOM 122.95
-----------------------	----------------------------------------------------------------------------	--------------------------------------------------------	-------------------------	-------------------------



⚠ A1552

ELEV 33	D	TDZE 29
---------	----------	---------



VGSI and RNAV glidepath not coincident (VGSI Angle 3.00/TCH 75).

4 NM Holding Pattern	HAXEK	GIKTE	RWY 11L
2700	1800	1800	
GP 3.00°			
TCH 50			
	6 NM	4.2 NM	1.2 NM

2000 OXJEF

*LNAV only.

CATEGORY	A	B	C	D
LPV DA	229-3/4		200 (200-3/4)	
LNAV/VNAV DA	471-1 1/2		442 (500-1 1/2)	
LNAV MDA	480-1	451 (500-1)	480-1 3/8	451 (500-1 3/8)
C CIRCLING	500-1 467 (500-1)	540-1 507 (600-1)	640-1 3/4 607 (700-1 3/4)	640-2 607 (700-2)

SW-2, 22 FEB 2024 to 21 MAR 2024

SW-2, 22 FEB 2024 to 21 MAR 2024

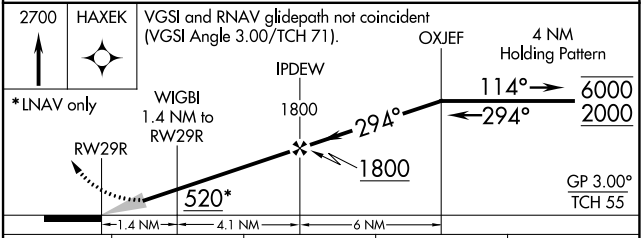
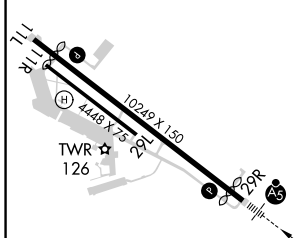
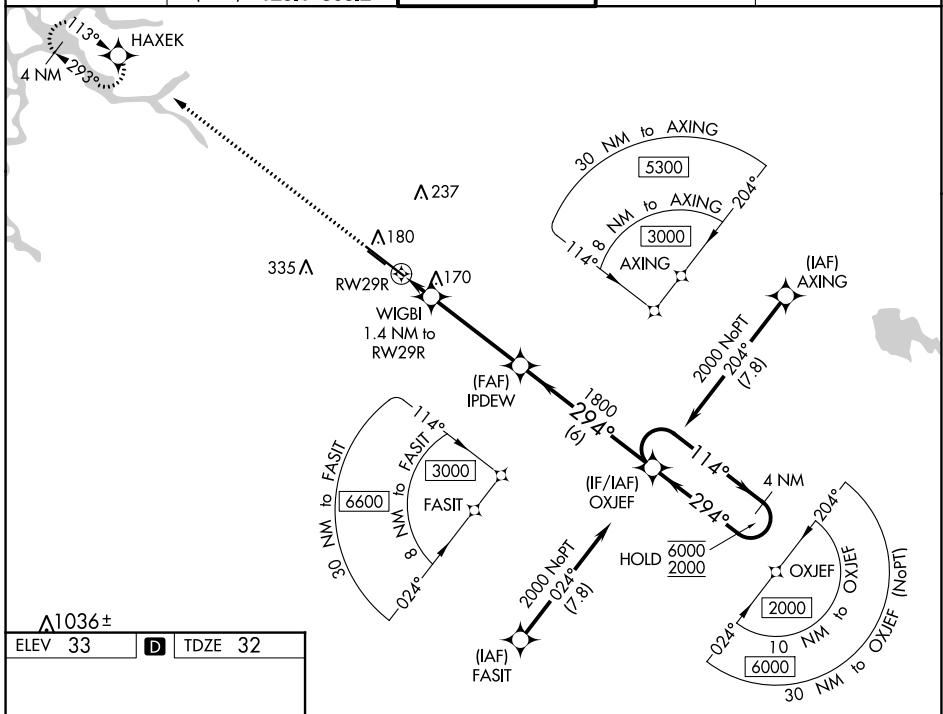
WAAS CH 87010 W29A	APP CRS 294°	Rwy Idg 8650 TDZE 32 Apt Elev 33
----------------------------------------	------------------------	-------------------------------------------------------------

RNAV (GPS) RWY 29R

STOCKTON METRO (SCK)

RNP APCH.	MALSR 	MISSED APPROACH: Climb to 2700 direct HAXEK and hold.
▽ For uncompensated Baro-VNAV systems, LNAV/VNAV NA below -3°C or above 54°C. For inop ALS, increase LNAV/VNAV visibility all Cats to RVR 4500. #RVR 1800 authorized with use of FD or AP or HUD to DA.		

ATIS 118.25	NORCAL APP CON (SE-NW) 123.85 278.3 (N-SE) 125.1 363.2	STOCKTON TOWER * 120.3 (CTAF) 0 239.0	GND CON 121.9	UNICOM 122.95
-----------------------	----------------------------------------------------------------------------	-------------------------------------------------	-------------------------	-------------------------



CATEGORY	A	B	C	D
LPV DA#		232/24	200 (200-½)	
LNAV/VNAV DA		320/24	288 (300-½)	
LNAV MDA	420/24	388 (400-½)	420/35	388 (400-⅝)
<input checked="" type="checkbox"/> CIRCLING	500-1 467 (500-1)	540-1 507 (600-1)	640-1¾ 607 (700-1¾)	640-2 607 (700-2)

SW-2, 22 FEB 2024 to 21 MAR 2024

SW-2, 22 FEB 2024 to 21 MAR 2024