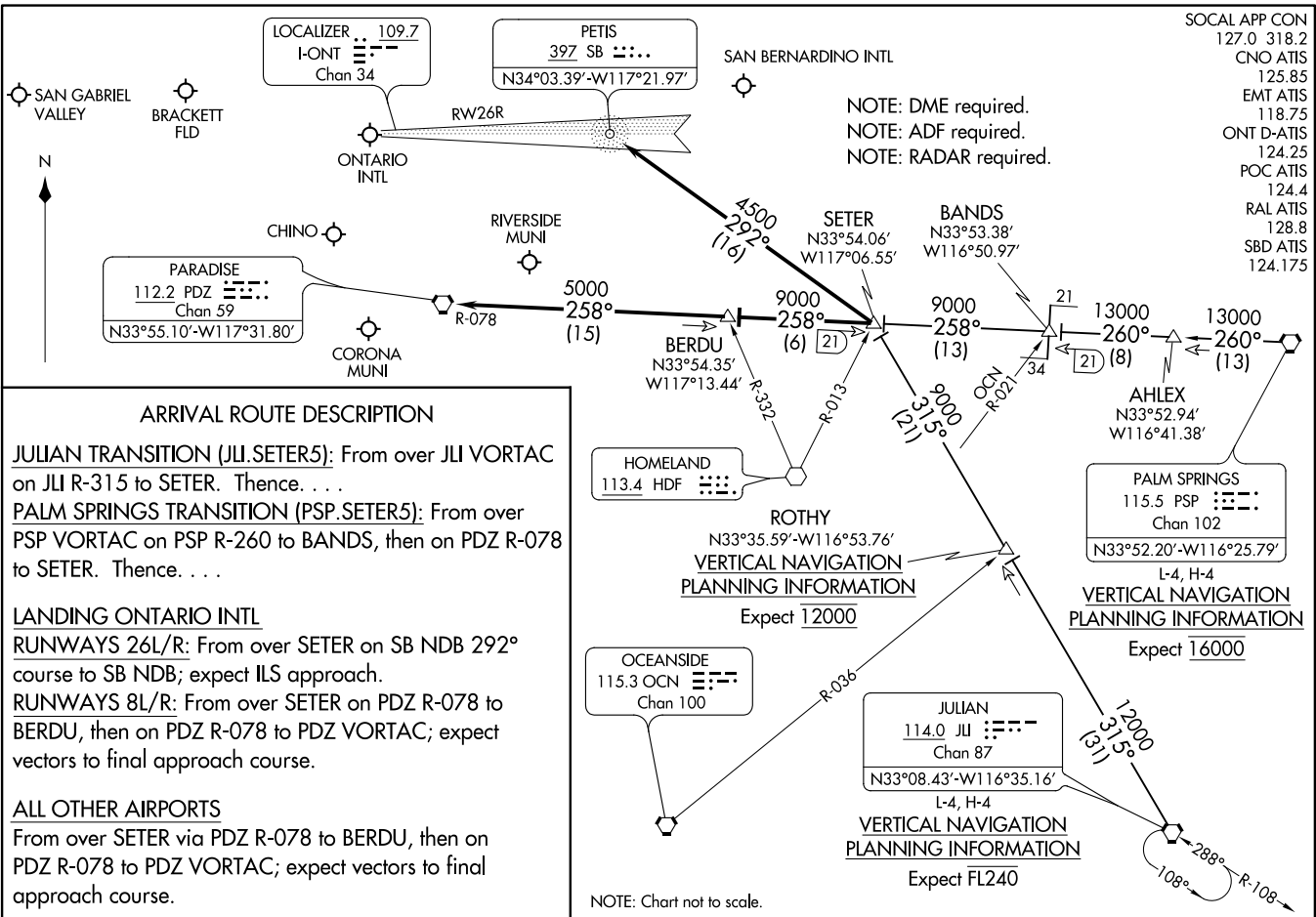


SETER FIVE ARRIVAL
(SETER:SETER5) 17AUG17

SETER FIVE ARRIVAL
(SETER:SETER5) 21112



NOTE: DME required.
NOTE: ADF required.
NOTE: RADAR required.

- SOCAL APP CON 127.0 318.2
- CNO ATIS 125.85
- EMT ATIS 118.75
- ONT D-ATIS 124.25
- POC ATIS 124.4
- RAL ATIS 128.8
- SBD ATIS 124.175

ARRIVAL ROUTE DESCRIPTION

JULIAN TRANSITION (JLI:SETER5): From over JLI VORTAC on JLI R-315 to SETER. Thence. . . .

PALM SPRINGS TRANSITION (PSP:SETER5): From over PSP VORTAC on PSP R-260 to BANDS, then on PDZ R-078 to SETER. Thence. . . .

LANDING ONTARIO INTL

RUNWAYS 26L/R: From over SETER on SB NDB 292° course to SB NDB; expect ILS approach.

RUNWAYS 8L/R: From over SETER on PDZ R-078 to BERDU, then on PDZ R-078 to PDZ VORTAC; expect vectors to final approach course.

ALL OTHER AIRPORTS

From over SETER via PDZ R-078 to BERDU, then on PDZ R-078 to PDZ VORTAC; expect vectors to final approach course.

ROTHY
N33°35.59'-W116°53.76'
VERTICAL NAVIGATION
PLANNING INFORMATION
Expect 12000

PALM SPRINGS
115.5 PSP
Chan 102
N33°52.20'-W116°25.79'
L-4, H-4
VERTICAL NAVIGATION
PLANNING INFORMATION
Expect 16000

JULIAN
114.0 JLI
Chan 87
N33°08.43'-W116°35.16'
L-4, H-4
VERTICAL NAVIGATION
PLANNING INFORMATION
Expect FL240

NOTE: Chart not to scale.

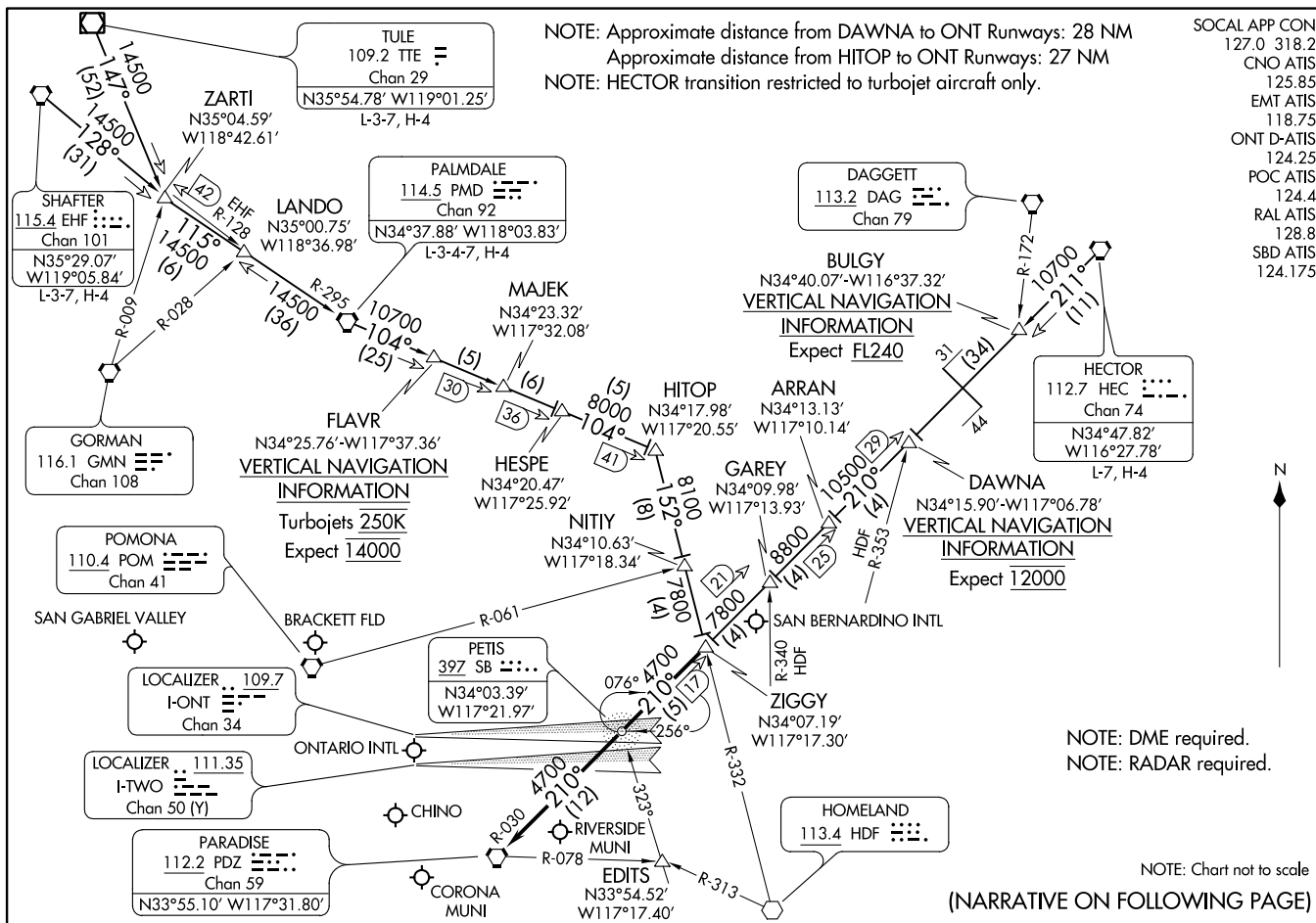
AL-965 (FAA)

ONTARIO, CALIFORNIA

ONTARIO, CALIFORNIA

ZIGGY SEVEN ARRIVAL
(ZIGGY, ZIGGY7) 01FEB18

ONTARIO, CALIFORNIA



NOTE: Approximate distance from DAWNA to ONT Runways: 28 NM
 Approximate distance from HITOP to ONT Runways: 27 NM
 NOTE: HECTOR transition restricted to turbojet aircraft only.

SOCAL APP CON
 127.0 318.2
 CNO ATIS
 125.85
 EMT ATIS
 118.75
 ONT D-ATIS
 124.25
 POC ATIS
 124.4
 RAL ATIS
 128.8
 SBD ATIS
 124.175

ZIGGY SEVEN ARRIVAL
(ZIGGY, ZIGGY7) 21112

AL-965 (FAA)

ONTARIO, CALIFORNIA

NOTE: DME required.
 NOTE: RADAR required.

NOTE: Chart not to scale
 (NARRATIVE ON FOLLOWING PAGE)

ARRIVAL ROUTE DESCRIPTION

HECTOR TRANSITION (HEC.ZIGGY7): From over HEC VORTAC on HEC R-211 and PDZ R-030 to ZIGGY. Thence

PALMDALE TRANSITION (PMD.ZIGGY7): From over PMD VORTAC on PMD R-104 to HITOP, then on HDF R-332 to ZIGGY. Thence

SHAFTER TRANSITION (EHF.ZIGGY7): From over EHF VORTAC on EHF R-128 and PMD R-295 to PMD VORTAC, then on PMD R-104 to HITOP, then on HDF R-332 to ZIGGY. Thence

TULE TRANSITION (TTE.ZIGGY7): From over TTE VOR/DME on TTE R-147 and PMD R-295 to PMD VORTAC, then on PMD R-104 to HITOP, then on HDF R-332 to ZIGGY. Thence

LANDING ONTARIO INTL

RUNWAYS 8L/R: From over ZIGGY on PDZ R-030 to PDZ VORTAC; expect RADAR vectors to final approach course.

RUNWAYS 26 L/R: From over ZIGGY direct PETIS NDB or on PDZ R-030 to PETIS; expect RADAR vectors for ILS approach.

ALL OTHER AIRPORTS

From over ZIGGY on PDZ R-030 to PDZ VORTAC; expect RADAR vectors to final approach course.

SW-3, 22 APR 2021 to 20 MAY 2021

SW-3, 22 APR 2021 to 20 MAY 2021