

LOC I-SAC <b>110.3</b>	APP CRS <b>019°</b>	Rwy Idg <b>5503</b> TDZE <b>21</b> Apt Elev <b>24</b>
---------------------------	------------------------	---

# ILS or LOC RWY 2

SACRAMENTO EXEC (SAC)

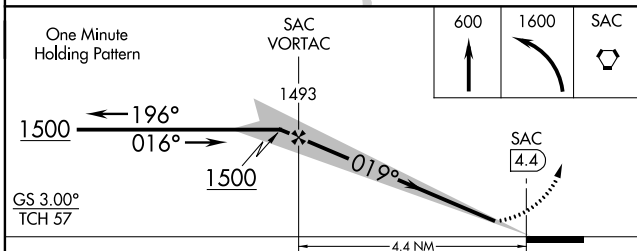
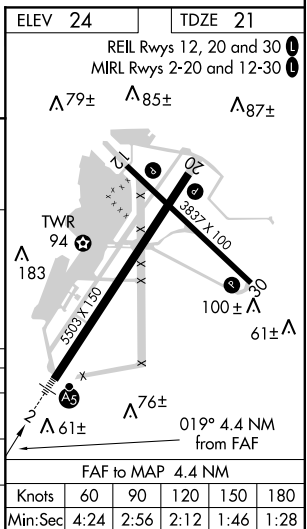
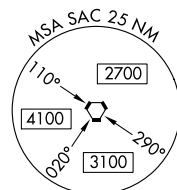
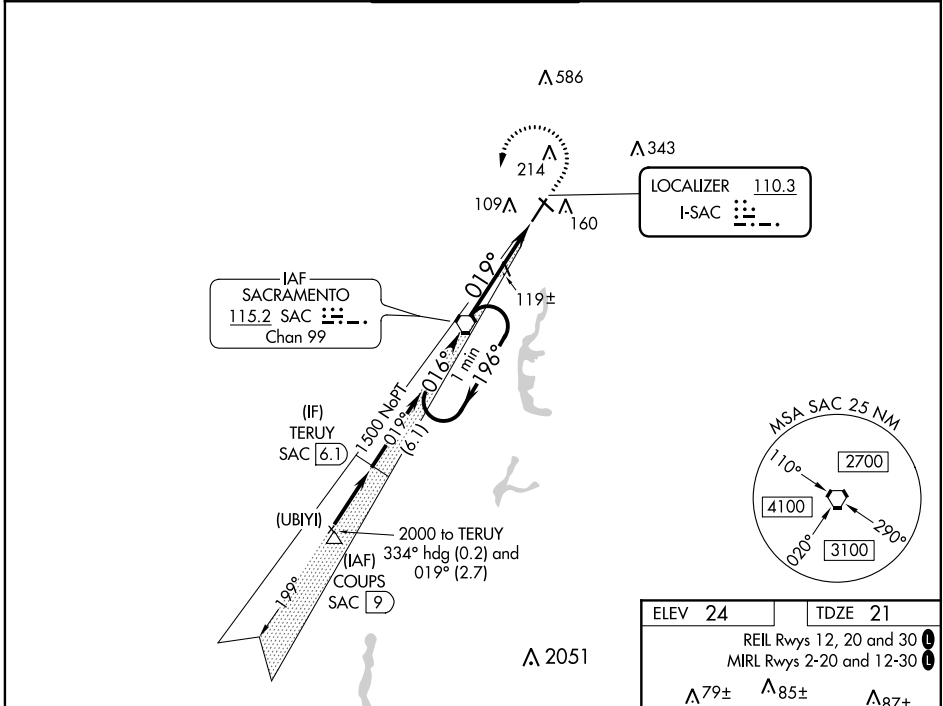
▼ When local altimeter setting not received, use Sacramento Intl altimeter setting and increase DA to 322 feet, increase all MDAs 40 feet and Circling Cat D visibility ¼ SM.  
▲ Autopilot coupled approach NA below 335 feet. For inop MALSRS, increase S-ILS 2 all Cats visibility to ¾ SM and S-LOC 2 Cat C/D visibility to 1 SM. For inop MALSRS when using Sacramento Intl altimeter setting, increase S-ILS 2 all Cats visibility to ¾ SM.

MALSRS



**MISSED APPROACH:**  
 Climb to 600 then climbing left turn to 1600 direct SAC VORTAC and hold.

ATIS <b>125.5</b>	NORCAL APP CON <b>125.25 257.9</b>	EXEC TOWER* <b>119.5 (CTAF) 278.8</b>	GND CON <b>125.0</b>	UNICOM <b>122.95</b>
----------------------	---------------------------------------	--	-------------------------	-------------------------



CATEGORY	A	B	C	D
S-ILS 2	294-½ 273 (300-½)			
S-LOC 2	380-½	359 (400-½)	380-⅝	359 (400-⅝)
CIRCLING	500-1 476 (500-1)	520-1 496 (500-1)	560-1½ 536 (600-1½)	800-2½ 776 (800-2½)

SW-2, 09 SEP 2021 to 07 OCT 2021

SW-2, 09 SEP 2021 to 07 OCT 2021

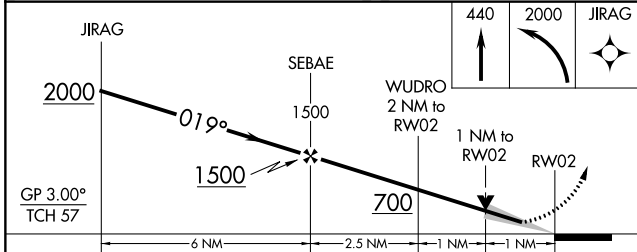
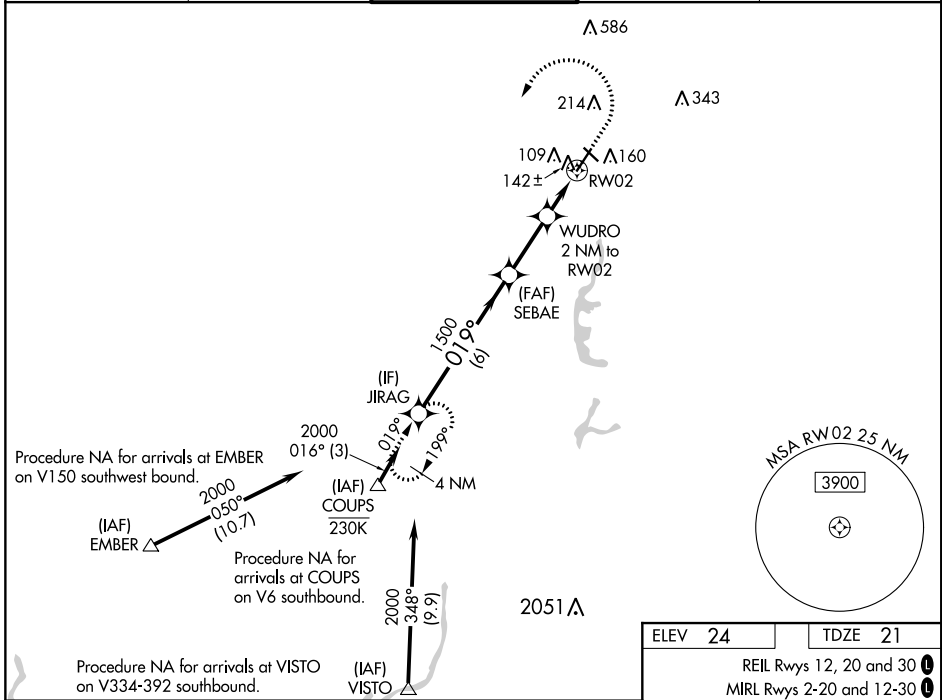
WAAS CH <b>62810</b> <b>W02A</b>	APP CRS <b>019°</b>	Rwy Idg TDZE <b>21</b> Apt Elev <b>24</b>	<b>5503</b>
--	------------------------	---	-------------

# RNAV (GPS) RWY 2

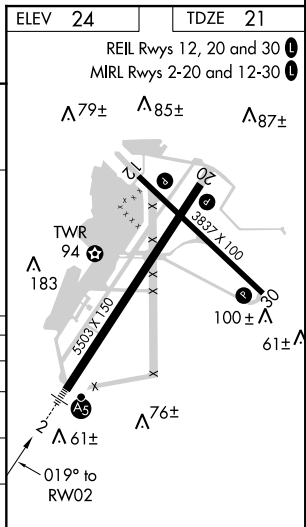
SACRAMENTO EXEC (SAC)

RNP APCH-GPS. ⚠ For uncompensated Baro-VNAV systems, LNAV/VNAV NA below -1°C or above 54°C. For inop ALS, increase LNAV/VNAV all Cats visibility to 7/8 SM, increase LNAV all Cats visibility to 1 SM.	MALS R 	MISSED APPROACH: Climb to 440 then climbing left turn to 2000 direct JIRAG and hold.
---	------------	--

ATIS <b>125.5</b>	NORCAL APP CON <b>125.25 257.9</b>	EXEC TOWER* <b>119.5 (CTAF) 278.8</b>	GND CON <b>125.0</b>	UNICOM <b>122.95</b>
----------------------	---------------------------------------	--	-------------------------	-------------------------



CATEGORY	A	B	C	D
LPV DA		221-1/2	200 (200-1/2)	
LNAV/VNAV DA		304-1/2	283 (300-1/2)	
LNAV MDA	400-1/2	379 (400-1/2)	400-5/8	379 (400-5/8)
CIRCLING	500-1 476 (500-1)	520-1 496 (500-1)	560-1 1/2 536 (600-1 1/2)	800-2 1/2 776 (800-2 1/2)



SW-2, 09 SEP 2021 to 07 OCT 2021

SW-2, 09 SEP 2021 to 07 OCT 2021

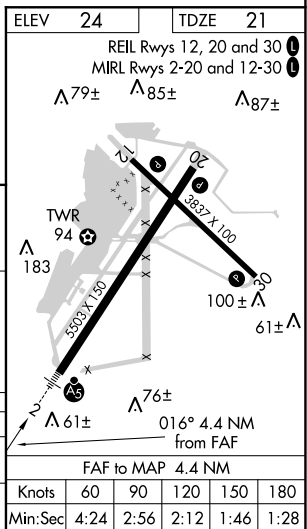
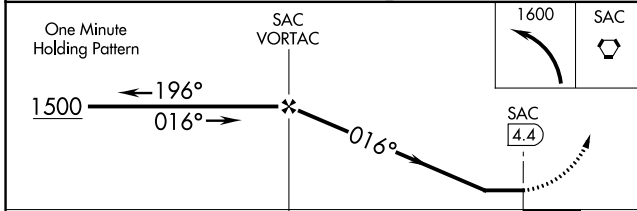
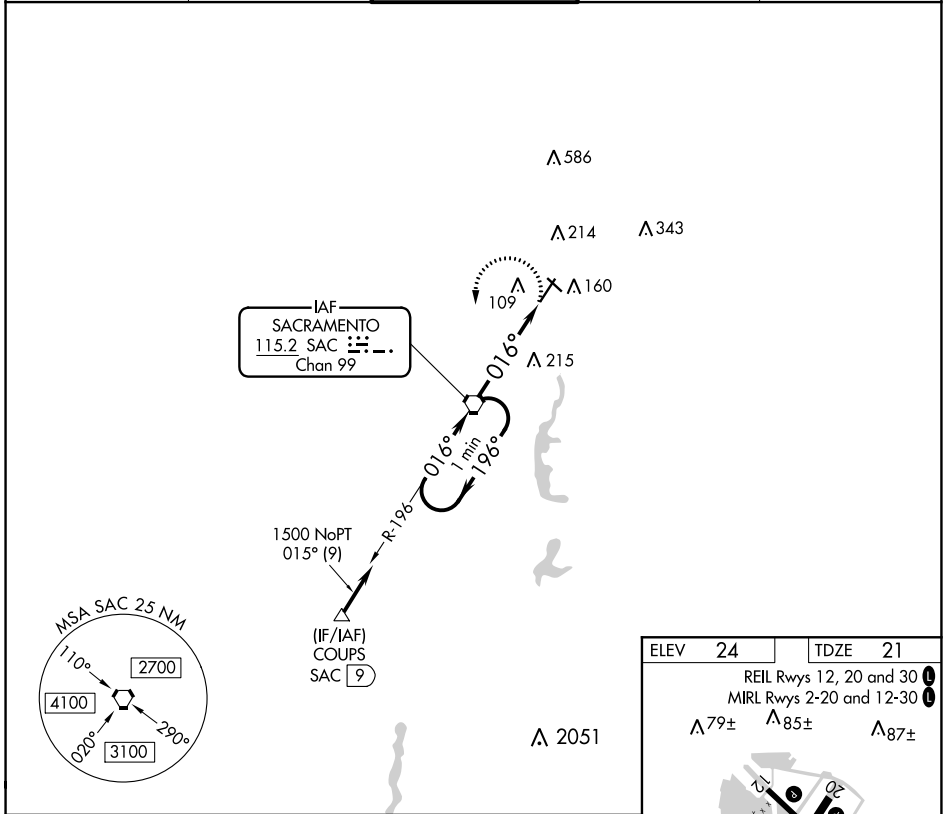
VORTAC SAC <b>115.2</b> Chan <b>99</b>	APP CRS <b>016°</b>	Rwy Idg <b>5503</b> TDZE <b>21</b> Apt Elev <b>24</b>
--	------------------------	---

# VOR RWY 2

SACRAMENTO EXEC (SAC)

<p>When local altimeter setting not received, use Sacramento Intl altimeter setting and increase all MDAs 40 feet and Circling Cat D visibility ¼ SM.</p>	MALSR	<p>MISSED APPROACH: Climbing left turn to 1600 direct SAC VORTAC and hold.</p>

ATIS <b>125.5</b>	NORCAL APP CON <b>125.25 257.9</b>	EXEC TOWER* <b>119.5 (CTAF) 278.8</b>	GND CON <b>125.0</b>	UNICOM <b>122.95</b>
----------------------	---------------------------------------	--	-------------------------	-------------------------



CATEGORY	A	B	C	D
S-2	520-1½ 499 (500-1½)		520-1 499 (500-1)	
CIRCLING	520-1 496 (500-1)		560-1½ 536 (600-1½)	800-2½ 776 (800-2½)

SW-2, 09 SEP 2021 to 07 OCT 2021

SW-2, 09 SEP 2021 to 07 OCT 2021