



RIVERSIDE, CALIFORNIA

# HI-TACAN Z RWY 32

AL-348 [USAF]

MARCH ARB (KRIV)

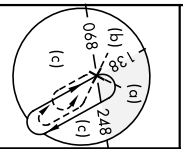
TACAN RIV	APCH CRS	Rwy/Idg	<b>13,302</b>
Chon <b>77</b>	<b>318°</b>	TDZE	<b>1497</b>
		Appt Elev	<b>1536</b>

▲ \* When ALS inop, increase vis to 1 1/2 miles  
 \*\* Circling not authorized NE of Rwy 14-32.  
 Rapid rising terrain.

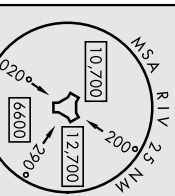
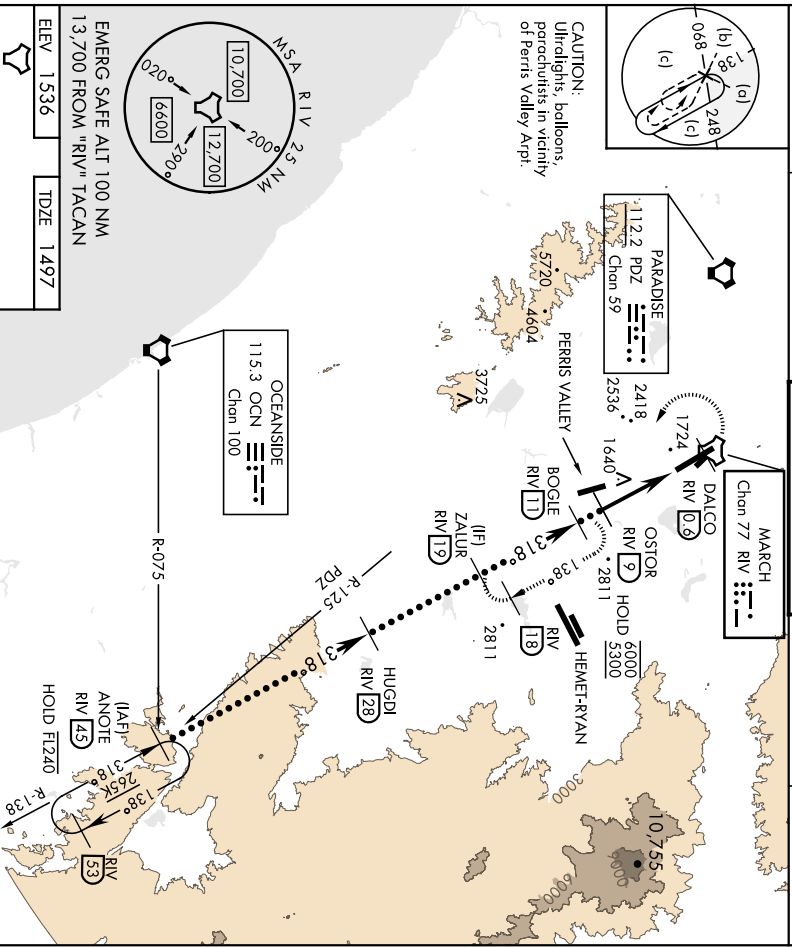


MISSED APPROACH: Climb to 5300 on RIV TACAN R-138 to DALCO, then turn left to intercept RIV R-138 direct BOGIE; continue climb to hold to 5300.

ATIS	APP/DEP CON *	TOWER	GND CON	CINC DEL
<b>134.75 239.05</b>	<b>133.5 306.975</b>	<b>127.65 253.5</b>	<b>121.75 335.8</b>	<b>127.775 268.7</b>

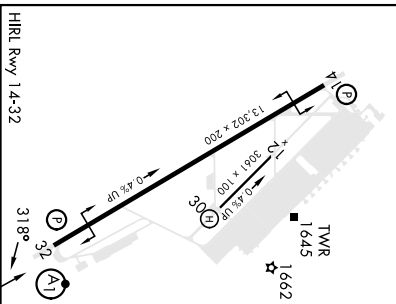


CAUTION:  
 Ultralights, balloons,  
 parachutists in vicinity  
 of Perris Valley Arpt.



EMERG SAFE ALT 100 NM  
 13,700 FROM "RIV" TACAN

ELEV	1536	TDZE	1497
------	------	------	------



3300	DALCO RIV R-138	BOGIE RIV R-138	3600	OSTOR R-138	ZALUR R-138	HUGDI R-138	ANOTE R-138
TACAN		CULAX		OSTOR		ZALUR	
C		D		E			
S-32 *		2040/60		543 (600-1 1/2)		2840-3	
C CIRCLING **		2300-2 1/2		2440-3		2840-3	
		764 (800-2 1/2)		904 (1000-3)		1304 (1400-3)	

RIVERSIDE, CALIFORNIA  
 Arndt 14 31DEC20

33°53'N-117°16'W

# HI-TACAN Z RWY 32

MARCH ARB (KRIV)





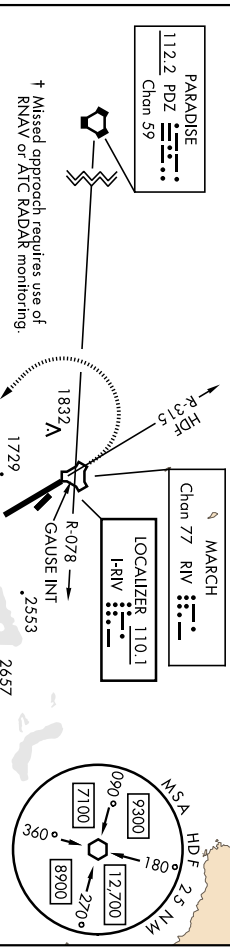
LOC I-RIV	APCH CRS	Rwy Idg	<b>13,302</b>
<b>110.1</b>	<b>315°</b>	TDE	<b>1497</b>
		Appt Elev	<b>1536</b>

AL-348 [USAF]

MARCH ARR (KRIV)

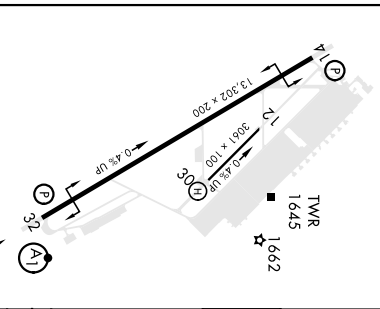
▲ When ALS inop, increase RVR to 40 and vis to ¾ mile.  
 \*\* When ALS inop, increase CAT I AB RVR to 55 and vis to 1 mile.  
 CAT CDE RVR to 60 and vis to 1½ miles.  
 \*\*\* Circling not authorized NE of Rwy 14-32. Rapid rising terrain.

ATIS	APP/DEP CON *	TOWER	GND CON	CLNC DEL
<b>134.75 239.05</b>	<b>133.5 306.975</b>	<b>127.65 253.5</b>	<b>121.75 335.8</b>	<b>127.775 268.7</b>

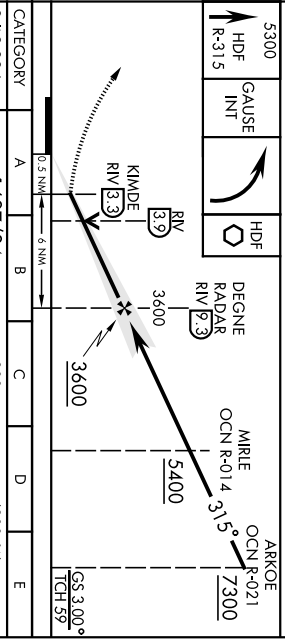


CAUTION: balloons, ultralights, gliders, parachutists in vicinity of Perris Valley Appt.

EMERG SAFE ALT 100 NM 13,700  
 FROM HDF VOR  
 ELEV 1536 TDE 1497



HRL Rwy 14-32	FAF to MAP 5.9 NM				
Knots	60	90	120	150	180
Min:Sec	5:54	3:56	2:57	2:22	1:58



CATEGORY	A	B	C	D	E
S-ILS 32 *	1697/24				
S-LOC 32 **	1900/24 403 (400-½)				
CIRCLING	2180-1 2260-1 2300-2½ 2440-3 2840-3				
	644 (700-1) 724 (800-1) 764 (800-2¾) 904 (1000-3) 1304 (1400-3)				

RIVERSIDE, CALIFORNIA MARCH ARR (KRIV)  
 Arndt 9 23APR20  
**ILS or LOC Y RWY 32**

RIVERSIDE, CALIFORNIA

# RNAV (GPS) RWY 14

WAAS CH <b>91363</b> W14A	APCH CRS <b>135°</b>	Rwy ldg TDZE Arprt Elev	<b>13,302</b> <b>1536</b> <b>1536</b>
---------------------------------	-------------------------	-------------------------------	---

AL-348 (USAF)

MARCH ARB (KRIV)

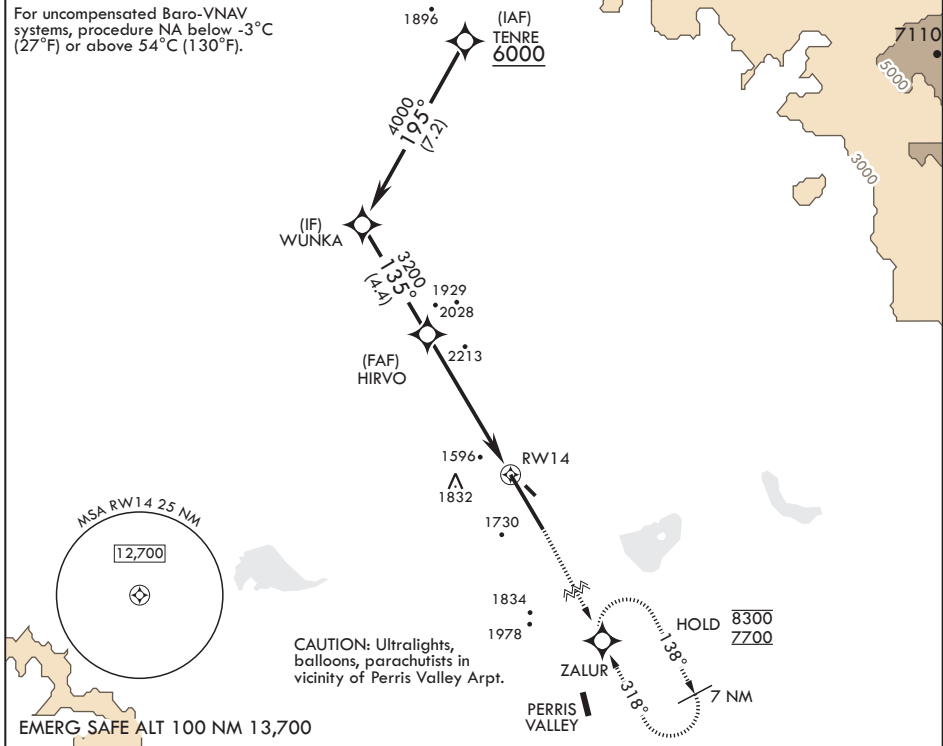
RNP APCH

MISSED APPROACH: Climb to 2300 then climbing right turn direct ZALUR and hold, continue climb in hold to 7700.

⚠ \* Circling NA NE of Rwy 14-32. Rapid rising terrain.

ATIS <b>134.75 239.05</b>	APP CON/DEP CON* <b>133.5 306.975</b>	TOWER <b>127.65 253.5</b>	GND CON <b>121.75 335.8</b>	CLNC DEL <b>127.775 268.7</b>
------------------------------	--	------------------------------	--------------------------------	----------------------------------

For uncompensated Baro-VNAV systems, procedure NA below -3°C (27°F) or above 54°C (130°F).



TENRE	2300	7700	ZALUR	ELEV 1536	TDZE 1536
6000	195°	WUNKA	4000	135°	HIRVO
GP 2.70°			2.8 NM to RW14		RW14
TCH 56			5.6 NM		
CATEGORY	A	B	C	D	
LPV DA	1756/40	220	(300-¾)		
LNAV/VNAV DA	2080-1⅝	544	(600-1⅝)		
LNAV MDA	2380/55 844 (900-1)	2380-1¼ 844 (900-1¼)	2380-2½ 844 (900-2½)	844 (900-2½)	
<b>C</b> CIRCLING*	2380-1¼ 844 (900-1¼)	844 (900-1¼)	2380-2½ 844 (900-2½)	2440-3 904 (1000-3)	

HIRL Rwy 14-32

RIVERSIDE, CALIFORNIA

33°53'N - 117°16'W

MARCH ARB (KRIV)

Amdt 7 24MAR22  
TERPS

# RNAV (GPS) RWY 14

SW-3, 22 FEB 2024 to 21 MAR 2024

SW-3, 22 FEB 2024 to 21 MAR 2024

RIVERSIDE, CALIFORNIA

# RNAV (GPS) RWY 32

WAAS CH 91364 W32A	APCH CRS 315°	Rwy ldg TDZE Arpt Elev	13,302 1497 1536
--------------------------	------------------	------------------------------	------------------------

AL-348 (USAF)

MARCH ARB (KRIV)

RNP APCH

▼ \* When ALS inop increase CAT ABCD RVR to 40, vis to 3/4 mile.  
 \*\* When ALS inop increase CAT ABCD RVR to 60, vis to 1 1/8 miles.

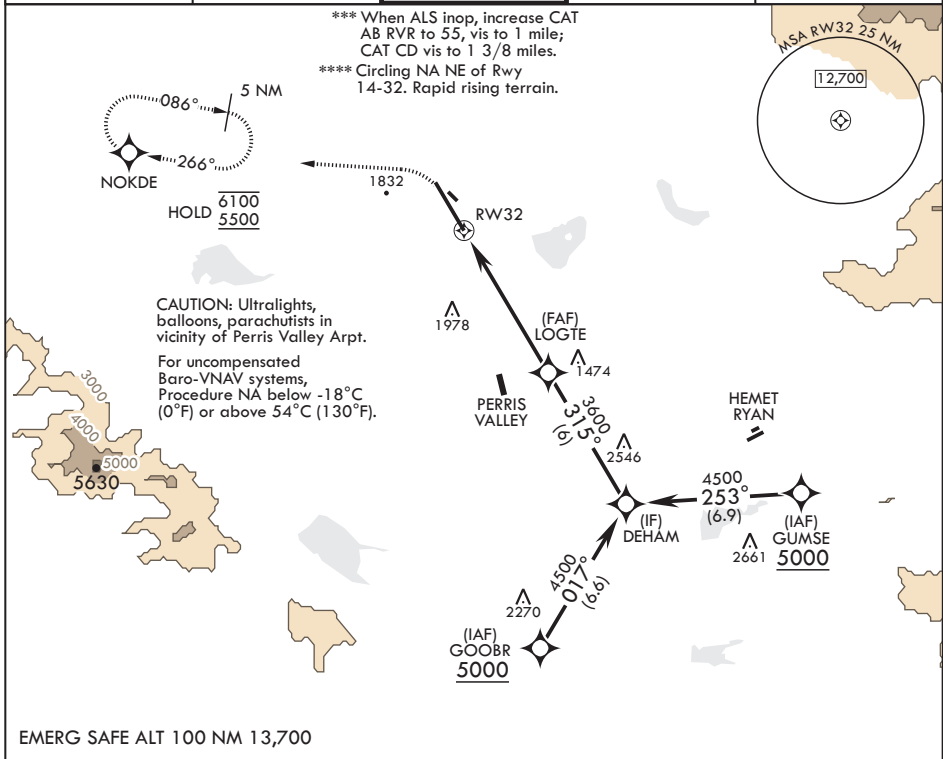
ALSF-1



MISSED APPROACH: Climb to 2100 then climbing left turn to 5500 direct NOKDE and hold, continue climb in hold to 5500.

ATIS 134.75 239.05	APP CON/DEP CON* 133.5 306.975	TOWER 127.65 253.5	GND CON 121.75 335.8	CLNC DEL 127.775 268.7
-----------------------	-----------------------------------	-----------------------	-------------------------	---------------------------

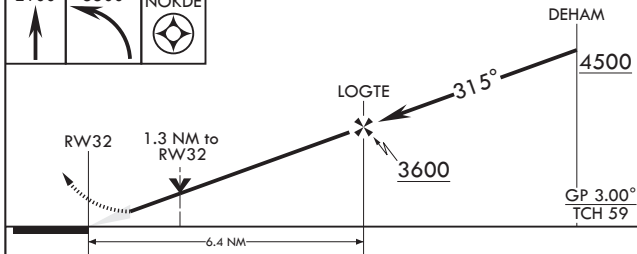
\*\*\* When ALS inop, increase CAT AB RVR to 55, vis to 1 mile; CAT CD vis to 1 3/8 miles.  
 \*\*\*\* Circling NA NE of Rwy 14-32. Rapid rising terrain.



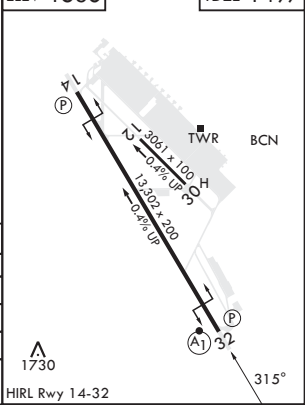
SW-3, 22 FEB 2024 to 21 MAR 2024

SW-3, 22 FEB 2024 to 21 MAR 2024

EMERG SAFE ALT 100 NM 13,700



ELEV 1536 TDZE 1497



CATEGORY	A	B	C	D
LPV DA*	1697/24	200	(200-1/2)	
LNAV/VNAV DA**	1909/40	412	(400-3/4)	
LNAV MDA***	1960/24 463 (500-1/2)	1960/50 463 (500-1)		
GP CIRCLING****	2180-1 664 (700-1)	2260-1 724 (800-1)	2300-2 764 (800-2/4)	2440-3 904 (1000-3)

RIVERSIDE, CALIFORNIA  
 Amdt 6 31JAN19

33°53'N - 117°16'W

MARCH ARB (KRIV)

# RNAV (GPS) RWY 32

# TACAN Y RWY 14

MARCH ARR (KRIV)

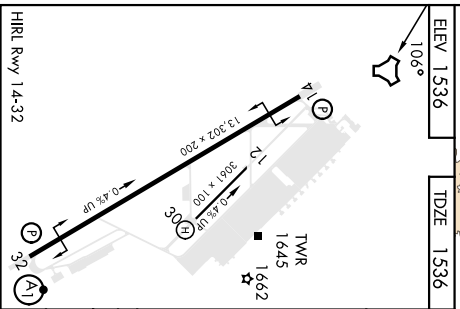
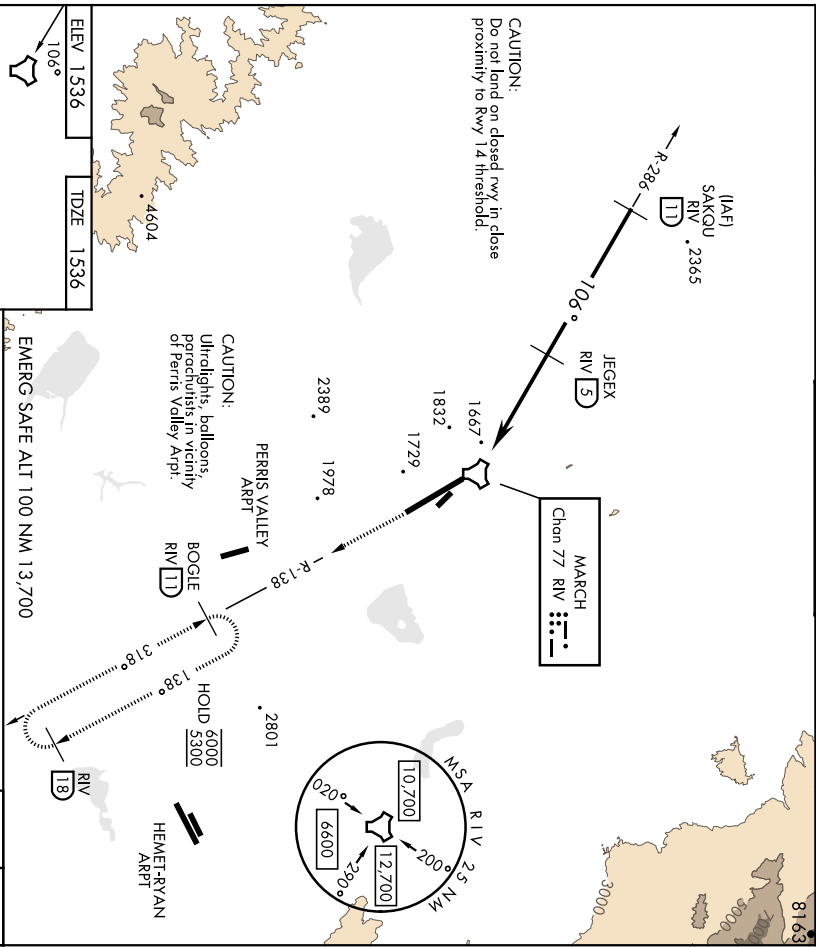
TACAN RIV	APCH CRS	Rwy Idg	<b>13302</b>
Chon 77	<b>106°</b>	TDZE	<b>1336</b>
		Appt Elev	<b>1536</b>

AL-348 [USAF]

MISSED APPROACH: Climb out RIV TACAN R-138 direct BOGLE, continue to climb in hold to 5300.

ATIS	APP/DEP CON *	TOWER	GND CON	CINC DEL
<b>134.75 239.05</b>	<b>133.5 306.975</b>	<b>127.65 253.5</b>	<b>121.75 335.8</b>	<b>127.775 268.7</b>

⚠ \* Circling not authorized NE of Rwy 14-32. Rapid rising terrain.



EMERG SAFE ALT 100 NM 13,700		3300		BOGLE RIV R-138	
2.58°		TCH 56		TACAN	
CATEGORY		A		B	
S-14		2260-17/8 724 (800-17/8)		2260-2 724 (800-2)	
* CIRCLING		2260-17/8 724 (800-17/8)   2260-17/8 724 (800-17/8)   724 (800-17/8)   724 (800-21/4)		2440-3 2840-3	
		33°53'N-117°16'W		904 (11000-3)   1304 (14000-3)	

# TACAN Y RWY 14

MARCH ARR (KRIV)



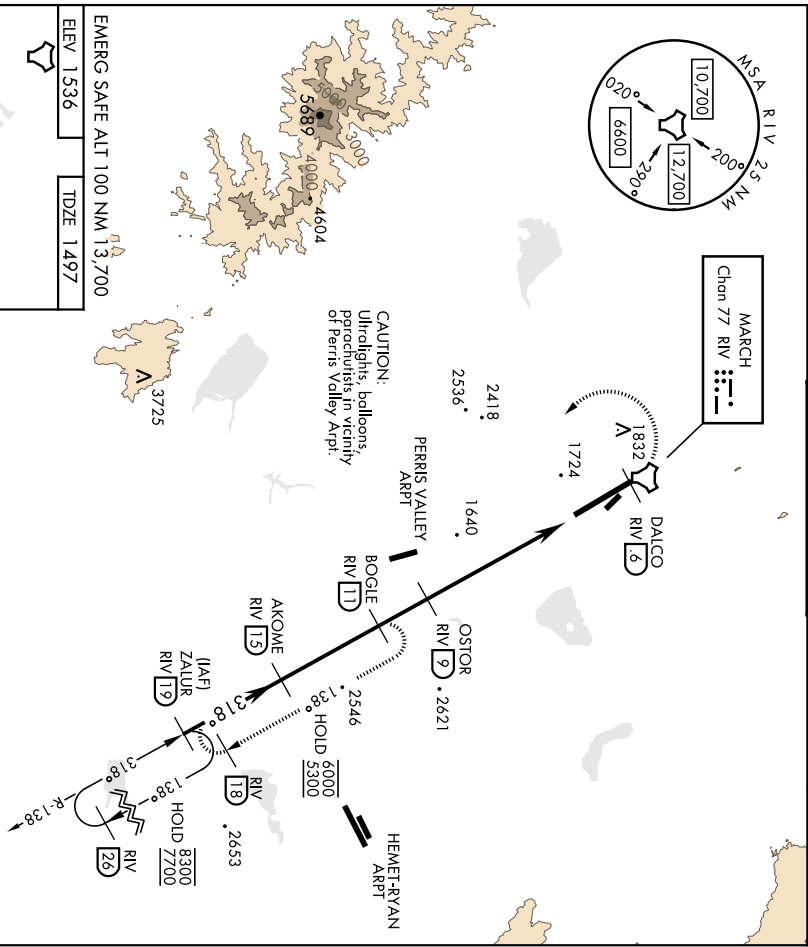
# TACAN Y RWY 32

MARCH ARR (KRIV)

TACAN RIV Chan <b>77</b>	APCH CRS <b>318°</b>	Rwy Idg <b>1497</b> TDZE <b>1536</b> Appt Elev <b>1536</b>	AL-348 [USAF]
ATIS <b>134.75 239.05</b>	APP/DEP CON * <b>133.5 306.975</b>	TOWER <b>127.65 253.5</b>	MISSED APPROACH: Climb to 5300 on RIV TACAN R-138 to DALCO, then turn left to intercept RIV R-138 direct BOGLE, continue climb in hold to 5300.
		GND CON <b>121.75 335.8</b>	CINC DEL <b>127.775 268.7</b>

▲ \*When ATIS inop, increase CAT AB RVR to 55 and vis to 1 mile, CAT CDE vis to 1 1/2 miles.  
\*\*Circling not authorized NE of Rwy. 14-32. Rapid rising terrain.

ALSF-1  
R-138 to DALCO, then turn left to intercept RIV R-138 direct BOGLE, continue climb in hold to 5300.



EMERG SAFE ALT 100 NM 13,700

ELEV 1536 TDZE 1497



5300	DALCO RIV R-138 (6)	BOGLE RIV R-138 (17)			
TACAN	CULAX I (4,2)	OSTOR (9)	AKOME (13)	ZALUR (19)	
	0.5	5.7 NM			
CATEGORY	A	B	C	D	E
S-32 *	2040/24 543 (600-1/2)	2260-1	2040/60 543 (600-1 1/8)	2440-3	2840-3
CIRCLING **	2180-1 644 (700-1)	724 (800-1)	764 (800-2 1/2)	904 (1000-3)	1304 (1400-3)

HRL Rwy. 14-32 318°

RIVERSIDE, CALIFORNIA MARCH ARR (KRIV)  
 Ancht 14 02FEB17  
**TACAN Y RWY 32**

# VOR Y RWY 32

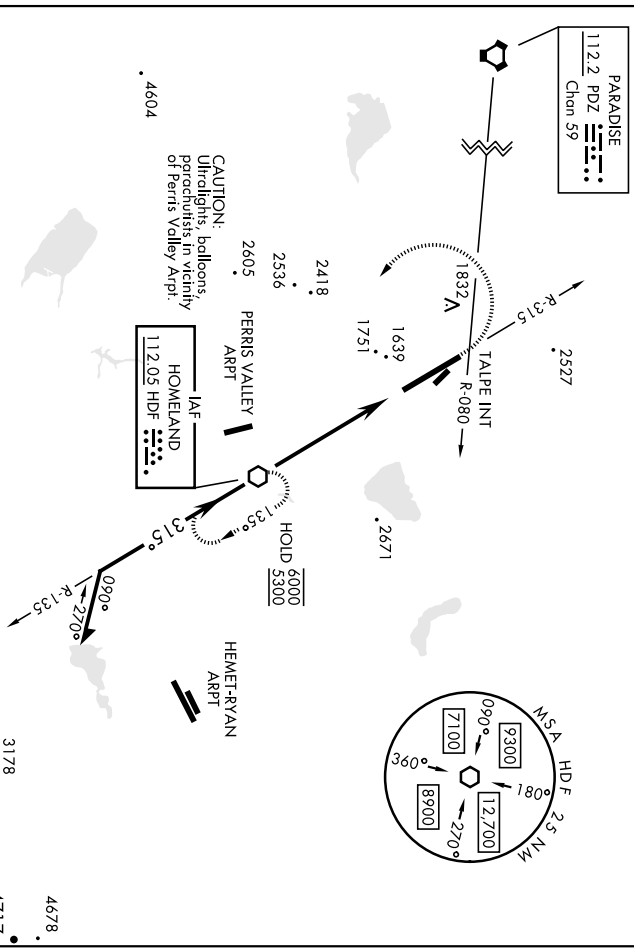
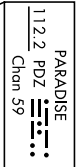
MARCH ARB (KRIV)

VOR HDF <b>112.05</b>	APCH CRS <b>315°</b>	Req'd Idg <b>1497</b> TDZE Elev <b>1536</b>	AL-348 [USAF]	MISSED APPROACH: Climb to 5300 on HDF VOR R-315 to TALPE, then turn left direct HDF continue climb-in-hold to 5300.
ATIS <b>134.75 239.05</b>	APP/DEP CON * <b>133.5 306.975</b>	TOWER <b>127.65 253.5</b>	GND CON <b>121.75 335.8</b>	CINC DEL <b>127.775 268.7</b>

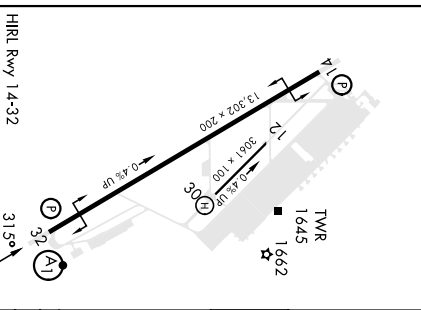
▲ \*When ATIS inop, increase CAT AB RVR to 60 and vis to 1 1/2 miles.  
 \*\* Circling not authorized NE of Rwy 14-32. Rapid rising terrain.



ALSF-1



ELEV 1536	TDZE 1497
-----------	-----------



Knots	60	90	120	150	180
Min:Sec	5:12	3:28	2:36	2:05	1:44

EMERG SAFE ALT 100 NM 13,700		TALPE INT		HDF	
5300	R-315	5300	HDF VOR	5300	Remain within 15 NM
VGS1 not coincident (VGS1 Angle 3.00)		3700		5300	
CATEGORY		A	B	C	D
S-32 *		2040/40	543 (600-1/6)	2040/60	543 (600-1/6)
CIRCLING **		2180-1 1/8	2260-1 1/8	2300-2 1/4	2440-3
		644 (700-1/8)	724 (800-1/8)	764 (800-2/4)	904 (1000-3)

RIVERSIDE, CALIFORNIA  
 MARCH ARB (KRIV)  
 Amch 15 19MAY22  
**VOR Y RWY 32**