

# CLOUD ONE ARRIVAL

AL-545 (FAA)

PALM SPRINGS, CALIFORNIA

### SOCAL APP CON \*

126.7 370.95  
135.275 251.1  
PSP ATIS  
124.65  
TRM ASOS  
118.325

### PALM SPRINGS TOWER \*

119.7 377.05  
BERMUDA DUNES UNICOM  
122.8  
JACQUELINE COCHRAN UNICOM  
123.0

**GOFFS**  
114.4 GFS  
Chan 91  
N35°07.87'-W115°10.59'  
L-7, H-4

**NEEDLES**  
115.2 EED  
Chan 99  
N34°45.96'-W114°28.45'  
L-7, H-4

**TWENTYNINE PALMS**  
114.2 TNP  
Chan 89  
N34°06.73'-W115°46.19'

**PALM SPRINGS**  
115.5 PSP  
Chan 102

**CLOUD**  
N33°54.17'  
W115°56.36'

**UBABE**  
N33°54.93'  
W115°44.51'

**THERMAL**  
116.2 TRM  
Chan 109  
N33°37.69'-W116°09.61'

**BLYTHE**  
117.4 BLH  
Chan 121  
N33°35.76'-W114°45.67'  
L-4-5, H-4

PALM SPRINGS INTL

BERMUDA DUNES

JACQUELINE COCHRAN RGNL

NOTE: Chart not to scale.

NOTE: DME required.

## ARRIVAL ROUTE DESCRIPTION

**BLYTHE TRANSITION (BLH.CLOUD1):** From over BLH VORTAC on BLH R-278 and PSP R-072 to CLOUD DME. Thence. . .

**DECAS TRANSITION (DECAS.CLOUD1):** From over DECAS INT on BLH R-278 and PSP R-072 to CLOUD DME. Thence. . .

**GOFFS TRANSITION (GFS.CLOUD1):** From over GFS VORTAC on GFS R-185 and TNP R-028 to TNP VORTAC, then on TNP R-199 to CLOUD DME. Thence. . .

**NEEDLES TRANSITION (EED.CLOUD1):** From over EED VORTAC on EED R-216 and TRM R-037 to UBABE DME, then on PSP R-072 to CLOUD DME. Thence. . .

. . . From over CLOUD DME on TRM R-021 to TRM VORTAC. Expect RADAR vectors to final approach course.

# CLOUD ONE ARRIVAL

(CLOUD.CLOUD1) 12MAY05

PALM SPRINGS, CALIFORNIA

SW-3, 22 APR 2021 to 20 MAY 2021

SW-3, 22 APR 2021 to 20 MAY 2021

(SBONO.SBONO1) 20310  
**SBONO ONE ARRIVAL**

AL-545 (FAA)

PALM SPRINGS, CALIFORNIA

PALM SPRINGS INTL ATIS  
 124.65  
 SOCAL APP CON \*  
 126.7 370.95  
 135.275 251.1  
 PALM SPRINGS TOWER \*  
 119.7 377.05  
 JACQUELINE COCHRAN ASOS  
 118.325  
 BERMUDA DUNES UNICOM  
 122.8  
 JACQUELINE COCHRAN UNICOM  
 123.0

GOFFS  
 114.4 GFS  
 Chan 91  
 N35°07.87'-W115°10.59'  
 L-7, H-4

NEEDLES  
 115.2 EED  
 Chan 99  
 N34°45.96'-W114°28.45'  
 L-7, H-4

TWENTYNINE PALMS  
 114.2 TNP  
 Chan 89  
 N34°06.73'-W115°46.19'

PALM SPRINGS  
 115.5 PSP  
 Chan 102

CLOUD  
 N33°54.17'  
 W115°56.36'

SBONO  
 N33°53.61'  
 W116°04.82'

PALM SPRINGS  
 INTL

BERMUDA  
 DUNES

JACQUELINE COCHRAN  
 RGNL

THERMAL  
 116.2 TRM  
 Chan 109

BLYTHE  
 117.4 BLH  
 Chan 121  
 N33°35.76'-W114°45.67'  
 L-4-5, H-4

NOTE: Chart not to scale.

NOTE: DME required.

**ARRIVAL ROUTE DESCRIPTION**

BLYTHE TRANSITION (BLH.SBONO1): From over BLH VORTAC on BLH R-278 and PSP R-072 to SBONO DME. Thence. . .

DECAS TRANSITION (DECAS.SBONO1): From over DECAS INT on BLH R-278 and PSP R-072 to SBONO DME. Thence. . .

GOFFS TRANSITION (GFS.SBONO1): From over GFS VORTAC on GFS R-185 and TNP R-028 to TNP VORTAC, then on TNP R-199 and PSP R-072 to SBONO DME. Thence. . .

NEEDLES TRANSITION (EED.SBONO1): From over EED VORTAC on EED R-216 and TRM R-037 to UBABE DME, then on PSP R-072 to SBONO DME. Thence. . .

. . . .From over SBONO DME expect RADAR vectors to final approach course.

**SBONO ONE ARRIVAL**  
 (SBONO.SBONO1) 12MAY05

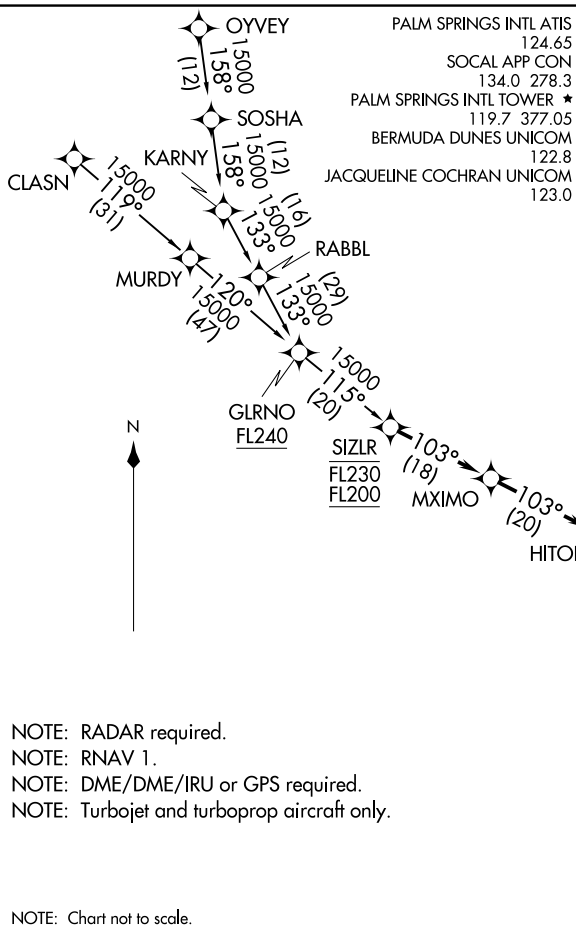
PALM SPRINGS, CALIFORNIA

SW-3, 22 APR 2021 to 20 MAY 2021

SW-3, 22 APR 2021 to 20 MAY 2021

SIZLR THREE ARRIVAL (RNAV)  
(SIZLR.SIZLR3) 01FEB18

PALM SPRINGS, CALIFORNIA



NOTE: RADAR required.  
 NOTE: RNAV 1.  
 NOTE: DME/DME/IRU or GPS required.  
 NOTE: Turbojet and turboprop aircraft only.

NOTE: Chart not to scale.

ARRIVAL ROUTE DESCRIPTION

CLASN TRANSITION (CLASN.SIZLR3)  
OYVEY TRANSITION (OYVEY.SIZLR3)

LANDING ALL AIRPORTS: From SIZLR on track 103° to MXIMO, then on track 103° to HITOP, then on track 106° to cross PZUKY at 16000, then on track 106° to cross BITTY at 16000, then on track 106° to cross MORON at 14000, then on track 095° to cross FERNN at 11000, then on track 123° to cross PSP VORTAC at 9000, then on track 124° to cross DEZZY at 9000, then on track 124°. Expect RADAR vectors to final approach course.

LOST COMMUNICATIONS

Proceed direct TRM VORTAC and execute the VOR or GPS-B approach.

(SIZLR.SIZLR3) 18256  
SIZLR THREE ARRIVAL (RNAV)

AL-545 (FAA)

PALM SPRINGS, CALIFORNIA