

CATHEDRAL ONE DEPARTURE
(CATH1 .PSP) 22OCT09

PALM SPRINGS, CALIFORNIA
PALM SPRINGS INTL (PSP)

ATIS 124.65
GND CON 121.9
PALM SPRINGS TOWER*
119.7 377.05
SOCAL DEP CON*
126.7 370.95
135.275 251.1

MINIMUM CROSSING ALTITUDES

FOR PSP VORTAC
V16-370-372: 11600 W
V370: 6200 NE
V386: 7600 NW
V388: 6300 W
V137: 11200 NW

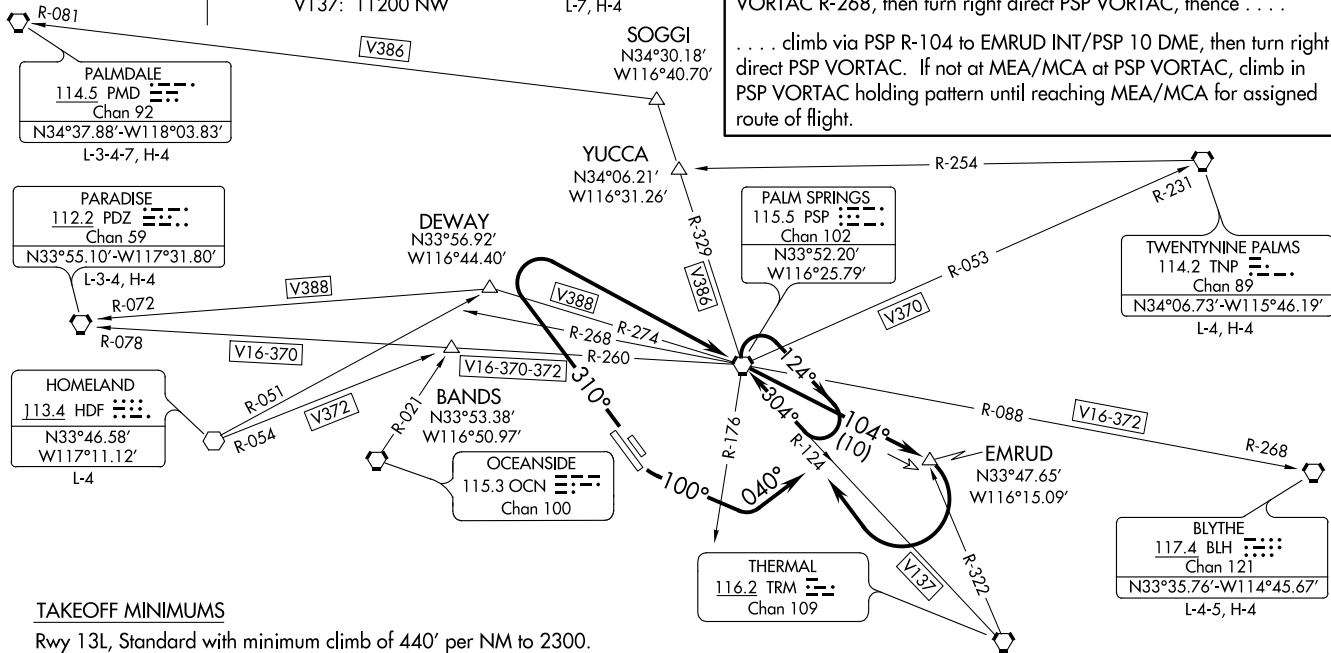
DAGGETT
113.2 DAG
Chan 79
N34°57.75'-W116°34.69'
L-7, H-4

DEPARTURE ROUTE DESCRIPTION

TAKEOFF RUNWAYS 13L/R: Climbing left turn heading 100° to cross PSP VORTAC R-176, then turn left heading 040° to intercept PSP R-104, thence . . .

TAKEOFF RUNWAYS 31L/R: Climb heading 310° to cross PSP VORTAC R-268, then turn right direct PSP VORTAC, thence . . .

. . . climb via PSP R-104 to EMRUD INT/PSP 10 DME, then turn right direct PSP VORTAC. If not at MEA/MCA at PSP VORTAC, climb in PSP VORTAC holding pattern until reaching MEA/MCA for assigned route of flight.



TAKEOFF MINIMUMS

Rwy 13L, Standard with minimum climb of 440' per NM to 2300.
Rwy 13R, Standard with minimum climb of 422' per NM to 2300.
Rwy 31R, Standard with minimum climb of 405' per NM to 4000.
Rwy 31L, Standard with minimum climb of 386' per NM to 2700.

(CATH1 .PSP) 20310
CATHEDRAL ONE DEPARTURE

AL-545 (FAA)

PALM SPRINGS INTL (PSP)
PALM SPRINGS, CALIFORNIA

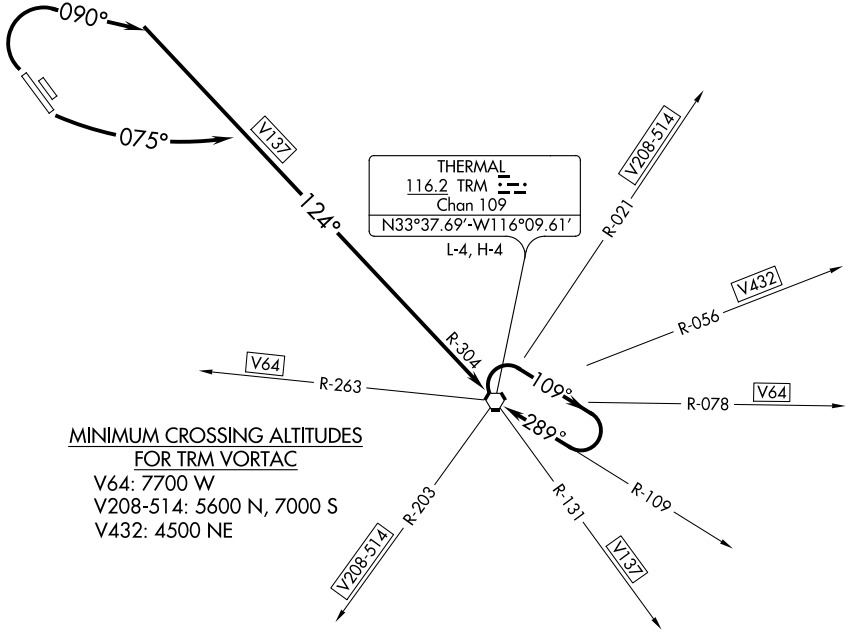
NOTE: Chart not to scale.

THERMAL SIX DEPARTURE

AL-545 (FAA)

PALM SPRINGS INTL (PSP)
PALM SPRINGS, CALIFORNIA

ATIS
124.65
GND CON
121.9
SOCAL DEP CON *
126.7 370.95
135.275 251.1



MINIMUM CROSSING ALTITUDES FOR TRM VORTAC

V64: 7700 W
V208-514: 5600 N, 7000 S
V432: 4500 NE

TAKEOFF MINIMUMS

Rwy 13L: Minimum climb of 440' per NM to 2300.
Rwy 13R: Minimum climb of 422' per NM to 2300.
Rwy 31L: Minimum climb of 386' per NM to 2700.
Rwy 31R: Minimum climb of 405' per NM to 2700.

NOTE: Chart not to scale.



DEPARTURE ROUTE DESCRIPTION

TAKEOFF RUNWAYS 13L/R: Climbing left turn heading 075° to intercept TRM R-304 to TRM VORTAC. Thence

TAKEOFF RUNWAYS 31L/R: Climb heading 090° to intercept TRM R-304 to TRM VORTAC. Thence

. . . .If not at MEA/MCA at TRM VORTAC, climb in TRM holding pattern until reaching the MEA/MCA for assigned route of flight.

THERMAL SIX DEPARTURE

SW-3, 22 APR 2021 to 20 MAY 2021

SW-3, 22 APR 2021 to 20 MAY 2021